



# Arkansas Department of Energy and the Environment Electric Sector Workshop

Entergy Arkansas, LLC  
Distributed Generation Overview  
November 14, 2023

# Overview



# EAL Quick Facts

**110**

years of service

**736,000+**

electric customers

**63**

counties served  
(58% in Disadvantaged Communities)

**~3,500**

Entergy employees in Arkansas

**Fully Integrated**  
Generation  
Transmission  
Distribution

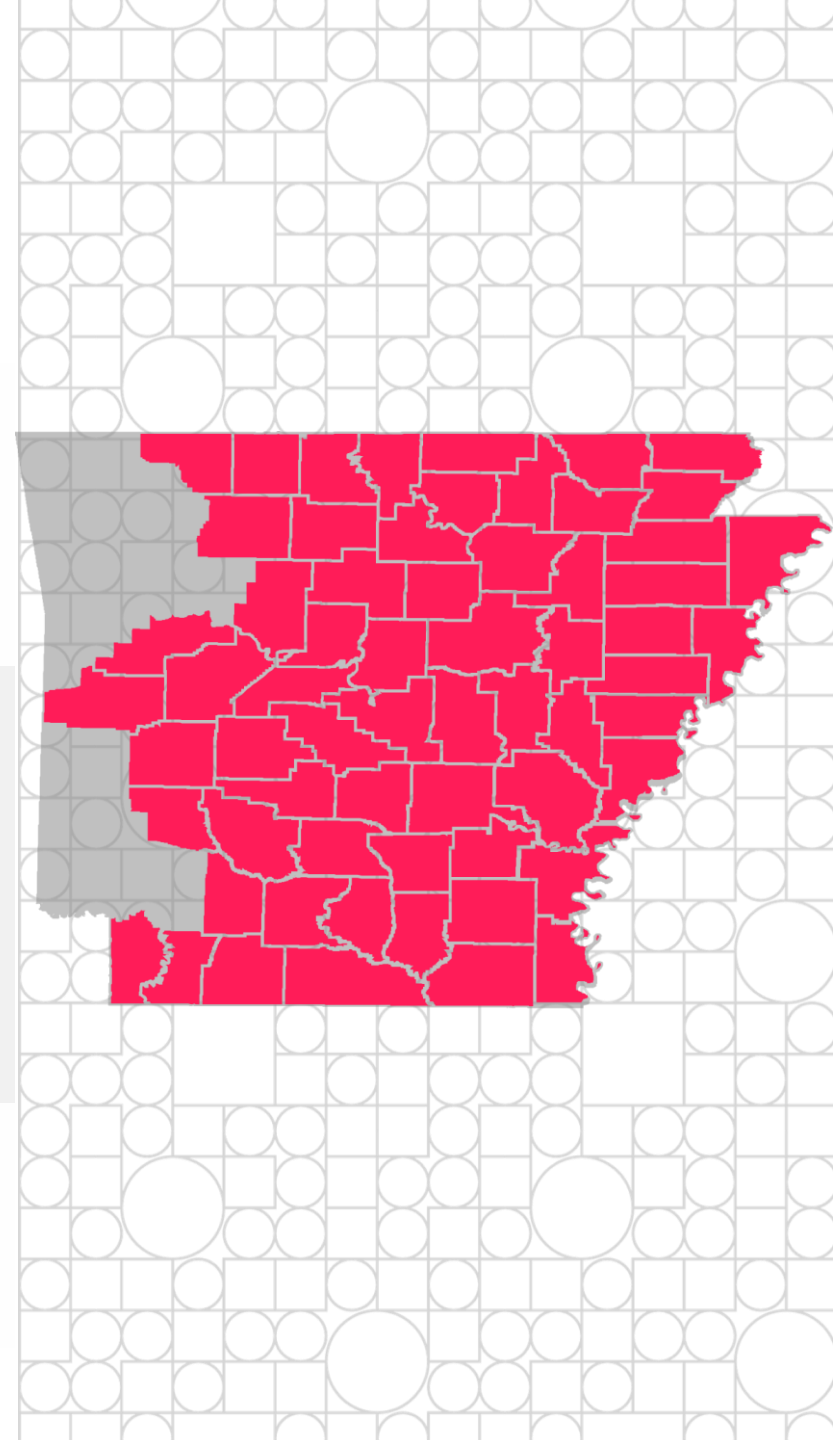
**~4,900 megawatts**  
of power generation capacity

**502 lb CO<sub>2</sub>/MWh**  
Average delivered power CO<sub>2</sub> emission rate in 2022

**4,000 MW**  
of renewable generation by 2030 including 2,000 MW under construction or in acquisition

**Dow Jones Sustainability Index**  
21st Consecutive Year  
1 of 4 Electric Utilities

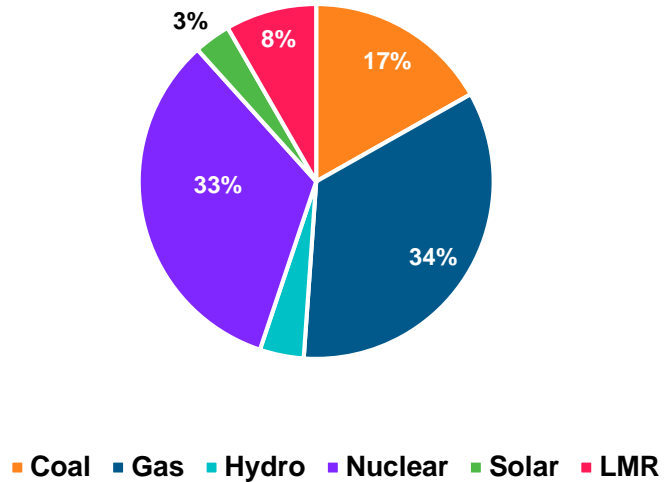
**Carbon Reduction**  
50% Reduction by 2030  
Net-Zero by 2050



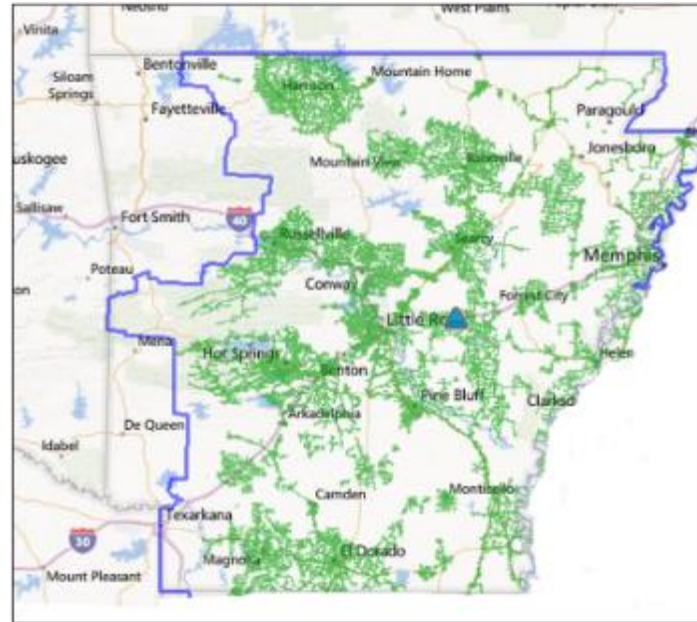
# Overview

Entergy Arkansas, LLC currently serves 736,444 electric customers across 63 counties in Arkansas

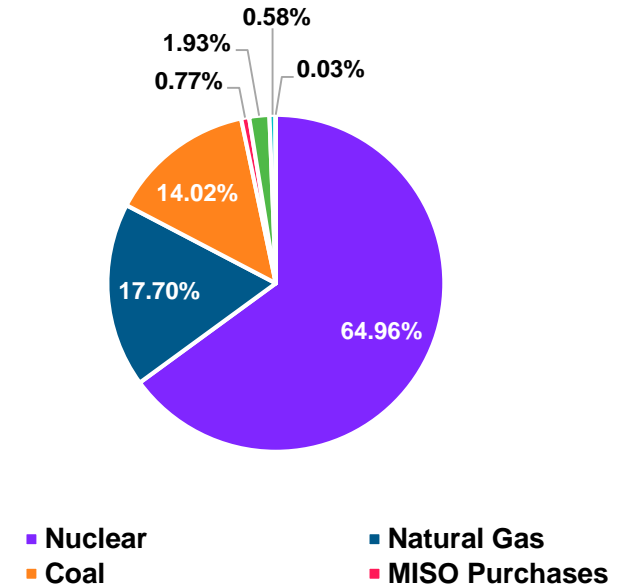
2022 EAL Capacity Mix\*



2022 Customer Peak Load: 4,369 MW  
 2022 Customer Energy Requirements: 23,734 GHW



2022 EAL Fuel Mix\*



Solar % excludes green offering subscription of ~0.07% solar

Transmission Mileage: 4,967  
 Distribution Mileage: 39,100

# **Existing and Historic Distributed Generation Facilities**

# Existing and Historic Distributed Generation

Central Station v Distributed Resources

Distributed Resources have existed for many years

Qualified Facilities or QF

Cogeneration and Cogeneration Rules / PURPA

Back Up Generators

Net Metering

Other customer owned generation

# Existing and Historic Distributed Generation

Customer owned / customer centric facilities not resources to serve other customers

Unscheduled puts or deliveries to utility

Not able to plan

Utility forced to be reactive

# **Prospective Distributed Generation Facilities**



# Prospective Distributed Generation Facilities

Power Through

Other Utility Owned Generation

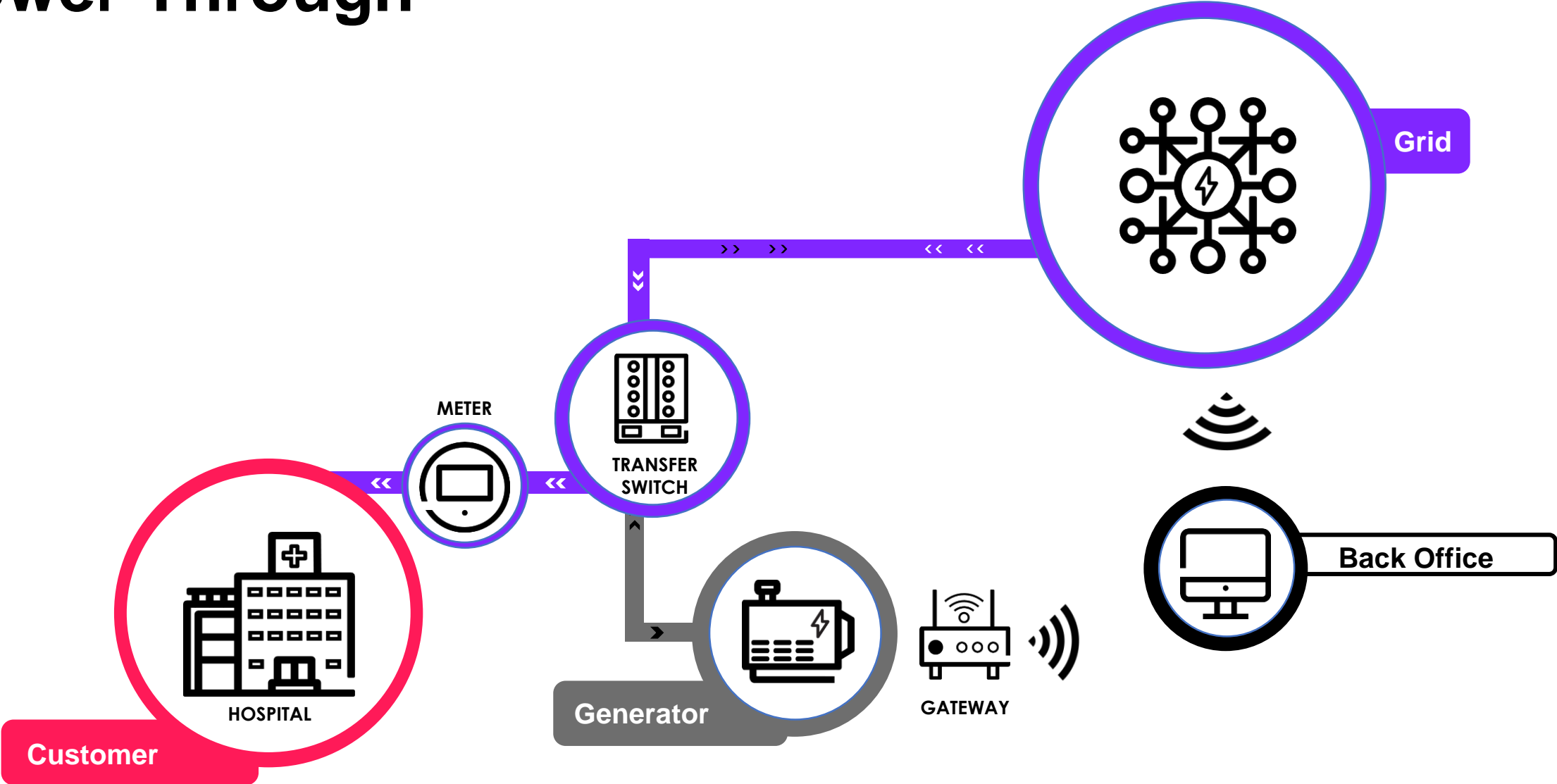
Other customer owned generation

Some customer centric / some resource centric serving all customers

# Power Through



# Power Through



# Power Through

- **Power Trough** – back up generation at customer locations that meets customer needs for back up power during outages and **provides additional resource to meet all customer needs at other times.**
- Each generator goes through a CCN application.
- EAL is working with APSC Staff to develop a streamlined CCN process and will be filing it for APSC approval later this month.
- Customers will work with the Customer Service team to create a custom solution to their needs, will sign an agreement (non-binding if CCN is disapproved) and after CCN approval will move forward with construction.
- Plan to file revised rate schedule and customer agreement by the end of 2023.

# Power Through

- Available to customers who take service at Primary and Secondary voltage under SGS, LGS, GST, LPS or PST rate schedules.
- Generator sizes are from 100kw to 10MW.
- Total cumulative capacity of 75MW.
- Term of the contracts is one to 20 years (note – the expected life of the generators is 20 years).
- Entergy Arkansas owns and operates the generator and uses it as a resource to serve all customers when it is not required for backup generation for the host customer.
- Host Customer pays appropriate share of costs.

