



ARKANSAS
Department of Environmental Quality

July 16, 2014

Catherine Cook, City Manager
City of Hope – Bois D’Arc WWTP
PO Box 667
Hope, AR 71802

RE: City of Hope-Bois D’Arc WWTP Inspection (Hempstead Co)
AFIN: 29-00034 **NPDES Permit No.: AR0038466**

Dear Ms. Cook:


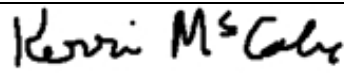

On July 11, 2014, I performed a Reconnaissance Inspection of the above referenced facility in accordance with the provisions of the Federal Clean Water Act, the Arkansas Water and Air Pollution Control Act, and the regulations promulgated thereunder. A copy of the inspection report is enclosed for your records.

No violations were noted at the time of the inspection. Please refer to the attached inspection report for any comments.

If I can be of any assistance, please contact me at mccabe@adeq.state.ar.us or (501) 682-0642.

Sincerely,

Kerri McCabe
Inspector Supervisor
Water Division

 A R K A N S A S Department of Environmental Quality		WATER DIVISION INSPECTION REPORT				
		AFIN: 29-00034		PERMIT #: AR0038466		DATE: 7/11/2014
		COUNTY: 29 Hempstead		PDS #: 078820		MEDIA: WN
		GPS LAT: 33.684028 LONG: -93.617044 LOCATION: Entrance				
FACILITY INFORMATION			INSPECTION INFORMATION			
NAME: City of Hope-Bois D'Arc WWTP LOCATION: 3307 Hwy 67 West CITY: Hope			FACILITY TYPE: 1 - Municipal INSPECTOR ID#: 84022 S - State FACILITY EVALUATION RATING: 3 - Satisfactory INSPECTION TYPE: Sanitary Sewer Overflow			
RESPONSIBLE OFFICIAL			DATE(S): 7/11/2014 ENTRY TIME: 09:20 EXIT TIME: 12:00 PERMIT EFFECTIVE DATE:			
NAME / TITLE: Catherine Cook / City Manager COMPANY: City of Hope MAILING ADDRESS: PO Box 667 CITY, STATE, ZIP: Hope AR 71802 PHONE & EXT: / FAX: 8707776701 / EMAIL: citymanager@hopearkansas.net			PERMIT EXPIRATION DATE:			
CONTACTED DURING INSPECTION: No			FAYETTEVILLE SHALE RELATED: N FAYETTEVILLE SHALE VIOLATIONS: N			
INSPECTION PARTICIPANTS						
NAME/TITLE/PHONE/FAX/EMAIL/ETC.: Red Smith, District 7 Inspector Michael Young, District 8 Inspector						
AREA EVALUATIONS						
(S=Satisfactory, M=Marginal, U=Unsatisfactory, N=Not Applicable/Evaluated)						
N	PERMIT	N	FLOW MEASUREMENT	N	STORMWATER	
N	RECORDS/REPORTS	N	LABORATORY	N	FACILITY SITE REVIEW	
N	OPERATION & MAINTENANCE	N	EFFLUENT/RECEIVING WATER	N	SELF-MONITORING PROGRAM	
N	SAMPLING	N	SLUDGE HANDLING/DISPOSAL	N	PRETREATMENT	
S	OTHER: Lift Stations					
SUMMARY OF FINDINGS						
No violations noted during inspection.						
GENERAL COMMENTS						
This reconnaissance inspection was conducted as a result of a complaint. On July 11, 2014 three lift stations were inspected unannounced to the City: 1.) I-30, 2.) 32, and 3.) Union Pacific (see Google Earth image for overview). District 7 and 8 Inspectors Red Smith and Michael Young were in attendance for the inspection. There was no evidence of recent SSOs at the three lift stations visited (i.e., no visible solids and no sewage smell). City officials were notified after all three lift stations had been inspected. The pump run hours for the three lift stations in question were requested and provided by the City (dates requested were July 1 to present; reports scanned and attached). There was no indication that pumps at the 32 and Union Pacific lift stations had been shut off and allowed to overflow during a rain event that allegedly occurred Wed July 3, 2014. The I-30 lift station had repairs made to it prior to the inspection. Discussion with City officials indicated that they were aware of their I&I issues and were addressing them per the CAO issued for the City. City officials provided a flyer to residents in regards to an upcoming smoke testing (flyer scanned and attached).						
INSPECTOR'S SIGNATURE: 			Kerri McCabe		DATE: 7/14/2014	
SUPERVISOR'S SIGNATURE: 			Jason Bolenbaugh		DATE: 7/16/2014	

Water Division Photographic Evidence Sheet

Location:	City of Hope-Bois D'Arc WWTP		
Photographer:	Kerri McCabe	Date:	July 11, 2014
Time:	0921	Witness:	District 7 and 8 Inspectors Red Smith and Michael Young
Photo #:	1	Description:	I-30 lift station off Hwy 278.



Photographer:	Kerri McCabe	Date:	July 11, 2014
Time:	0921	Witness:	District 7 and 8 Inspectors Red Smith and Michael Young
Photo #:	2	Description:	Pumps at I-30 lift station. No solids on ground.



Water Division Photographic Evidence Sheet

Location:	City of Hope-Bois D'Arc WWTP				
Photographer:	Kerri McCabe	Date:	July 11, 2014	Time:	0923
Witness:	District 7 and 8 Inspectors Red Smith and Michael Young			Photo #:	3
Description:	Stream near I-30 lift station; no solids present.				



Photographer:	Kerri McCabe	Date:	July 11, 2014	Time:	0932
Witness:	District 7 and 8 Inspectors Red Smith and Michael Young			Photo #:	4
Description:	32 lift station off Hwy 32.				



Water Division Photographic Evidence Sheet

Location:	City of Hope-Bois D'Arc WWTP		
Photographer:	Kerri McCabe	Date:	July 11, 2014
Time:	0932	Witness:	District 7 and 8 Inspectors Red Smith and Michael Young
Photo #:	5	Description:	Pumps at 32 lift station. No solids on ground.



Photographer:	Kerri McCabe	Date:	July 11, 2014
Time:	0933	Witness:	District 7 and 8 Inspectors Red Smith and Michael Young
Photo #:	6	Description:	Dry stream bed near 32 lift station; no solids present.

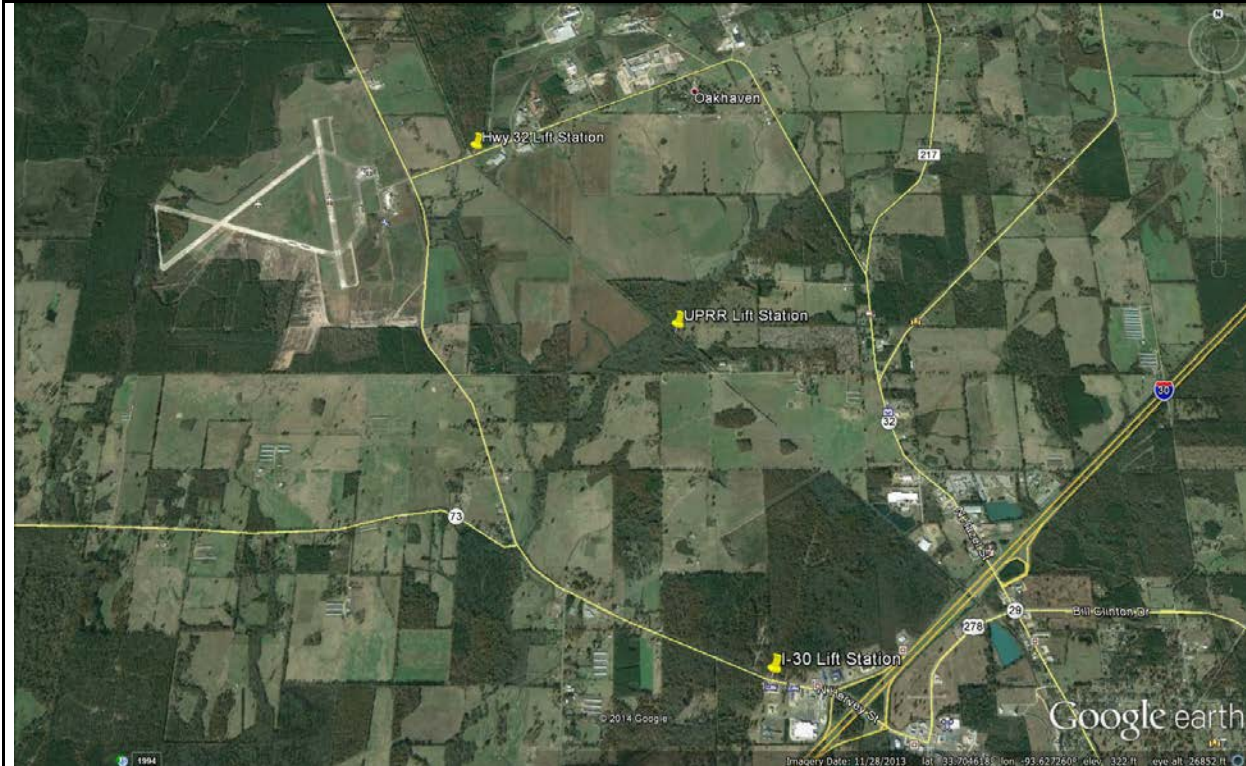


Water Division Photographic Evidence Sheet

Location:	City of Hope-Bois D'Arc WWTP		
Photographer:	Kerri McCabe	Date:	July 11, 2014
Time:	0950	Witness:	District 7 and 8 Inspectors Red Smith and Michael Young
Photo #:	7	Description:	Union Pacific lift station off Hempstead Co Rd 12; no solids on ground.



Photographer:		Date:		Time:	
Witness:		Photo #:	8	Description:	Google Earth image dated Nov 28, 2013 showing overview of lift stations.



Date 6-30-14

Date 7-1

Start Time:		Finish Time:		Initials:		Start Time:		Finish Time:		Initials:			
Lift Station	Meter Reading	#1 Pump	#2 Pump	Lift Station	Meter Reading	#1 Pump	#2 Pump						
1-30	Rainfall Today 72755 Yesterday 78691	Today 15381.11 Yesterday 15379.27	Today 27777.6 Yesterday 27760	1-30	Rainfall Today 72907 Yesterday 72755	Today 15388.45 Yesterday 15381.11	Today 2782.2 Yesterday 2777.6						
TOTALS	64	84	1.6	TOTALS	152	7.32	4.6						
HWY 32	Rainfall Today 33673 Yesterday 53065	Today 1832.9 Yesterday 1832.8	Today 1379.0 Yesterday 1378.5	HWY 32	Rainfall Today 53090 Yesterday 53073	Today 1832.8 Yesterday 1832.8	Today 1380.4 Yesterday 1379.0						
TOTALS	8	0	.5	TOTALS	17		1.4						
UNION PACIFIC	Rainfall Today 6613 Yesterday 6583	Today 31975.3 Yesterday 31975.2	Today 39134.4 Yesterday 39134.4	UNION PACIFIC	Rainfall Today 6638 Yesterday 6613	Today 31978.4 Yesterday 31975.3	Today 39137.3 Yesterday 39134.4						
TOTALS	30	2.1	2.0	TOTALS	45	3.1	2.9						
N SIDE PARK	Rainfall Today 31522 Yesterday 31518	Today Yesterday	Today Yesterday	N SIDE PARK	Rainfall Today 31526 Yesterday 31522	Today Yesterday	Today Yesterday						
TOTALS	04			TOTALS	4								
DATE	Start Time:		Finish Time:		Initials:		DATE	Start Time:		Finish Time:		Initials:	
DODD ST	Rainfall Today 21155 Yesterday 21139	Today 4826.5 Yesterday 4825.5	Today 14401.09 Yesterday 14400.01	DODD ST	Rainfall Today 21179 Yesterday 21155	Today 4828.0 Yesterday 4826.5	Today 14402.5 Yesterday 14401.09						
TOTALS	16	1.0	1.08	TOTALS	24	1.5	1.25						
BLACK BRANCH	Rainfall Today 14360 Yesterday 14354	Today 1536.31 Yesterday 1535.95	Today 1597.15 Yesterday 1596.82	BLACK BRANCH	Rainfall Today 14366 Yesterday 14360	Today 1536.43 Yesterday 1536.31	Today 1597.4 Yesterday 1597.15						
TOTALS	6	.32	.33	TOTALS	6	.32	.21						
TRADE SCHOOL	Rainfall Today 53522 Yesterday 53486	Today 5645.70 Yesterday 5643.86	Today 5311.35 Yesterday 5309.51	TRADE SCHOOL	Rainfall Today 5361 Yesterday 53522	Today 5647.71 Yesterday 5645.70	Today 5313.75 Yesterday 5311.35						
TOTALS	36	1.84	1.84	TOTALS	39	2.01	2.0						
MELROSE	Rainfall Today Yesterday	Today Yesterday	Today Yesterday	MELROSE	Rainfall Today Yesterday	Today Yesterday	Today Yesterday						
TOTALS				TOTALS									

Date 7-2-14

Start Time: Finish Time: Initials:

Lift Station Meter Reading #1 Pump #2 Pump

1-30 Rainfall Today 73068 Yesterday 72907 Today 15388.53 Yesterday 15388.43 Today 2786.0 Yesterday 2782.2

TOTALS Rainfall 161 Today 1832.8 Yesterday 1832.8 Today 1381.7 Yesterday 1380.4

HWY 32 Rainfall Today 53105 Yesterday 53090 Today 1832.8 Yesterday 1832.8 Today 1381.7 Yesterday 1380.4

TOTALS Rainfall 15 Today 0 Yesterday 0 Today 1.3 Yesterday 1.3

UNION PACIFIC Rainfall Today 65762 Yesterday 6658 Today 31981.3 Yesterday 31978.4 Today 39140.3 Yesterday 39137.3

TOTALS Rainfall 471 Today 2.9 Yesterday 2.9 Today 3.0 Yesterday 3.0

N SIDE PARK Rainfall Today 31530 Yesterday 31526 Today 31538 Yesterday 31530 Today 31538 Yesterday 31530

TOTALS Rainfall 4 Today 8 Yesterday 8 Today 8 Yesterday 8

DATE Start Time: Finish Time: Initials:

DODD ST Rainfall Today 21260 Yesterday 21179 Today 4829.4 Yesterday 4828.0 Today 14403.91 Yesterday 14402.56

TOTALS Rainfall 21 Today 1.4 Yesterday 1.4 Today 1.35 Yesterday 1.35

BLACK BRANCH Rainfall Today 14372 Yesterday 141366 Today 1536.94 Yesterday 1536.63 Today 1597.45 Yesterday 1597.40

TOTALS Rainfall 6 Today 3.1 Yesterday 3.1 Today 2.3 Yesterday 2.3

TRADE SCHOOL Rainfall Today 53599 Yesterday 53561 Today 5649.63 Yesterday 5647.71 Today 5313.35 Yesterday 5313.35

TOTALS Rainfall 38 Today 1.92 Yesterday 1.92 Today 1.92 Yesterday 1.92

MELROSE Rainfall Today Yesterday Today Yesterday Today Yesterday

TOTALS Rainfall Today Yesterday Today Yesterday Today Yesterday

Date 7-3-14

Start Time: Finish Time: Initials:

Lift Station Meter Reading #1 Pump #2 Pump

1-30 Rainfall Today 73199 Yesterday 73068 Today 15389.81 Yesterday 15388.53 Today 2797.3 Yesterday 2786.0

TOTALS Rainfall 131 Today 1832.8 Yesterday 1832.8 Today 1381.7 Yesterday 1381.7

HWY 32 Rainfall Today 53156 Yesterday 53105 Today 1832.8 Yesterday 1832.8 Today 1381.7 Yesterday 1381.7

TOTALS Rainfall 51 Today 0 Yesterday 0 Today 4.06 Yesterday 4.06

UNION PACIFIC Rainfall Today 6759 Yesterday 6702 Today 31982.5 Yesterday 31981.3 Today 39146.8 Yesterday 39140.3

TOTALS Rainfall 57 Today 1.2 Yesterday 1.2 Today 6.05 Yesterday 6.05

N SIDE PARK Rainfall Today 31538 Yesterday 31530 Today 31538 Yesterday 31530 Today 31538 Yesterday 31530

TOTALS Rainfall 8 Today 8 Yesterday 8 Today 8 Yesterday 8

DATE Start Time: Finish Time: Initials:

DODD ST Rainfall Today 21236 Yesterday 21260 Today 4832.0 Yesterday 4829.4 Today 144105.97 Yesterday 144103.91

TOTALS Rainfall 36 Today 2.6 Yesterday 2.6 Today 2.06 Yesterday 2.06

BLACK BRANCH Rainfall Today 14378 Yesterday 141372 Today 1537.73 Yesterday 1536.94 Today 1597.90 Yesterday 1597.65

TOTALS Rainfall 6 Today 7.9 Yesterday 7.9 Today 2.5 Yesterday 2.5

TRADE SCHOOL Rainfall Today 53618 Yesterday 53599 Today 5652.12 Yesterday 5649.63 Today 5317.87 Yesterday 5315.28

TOTALS Rainfall 49 Today 2.49 Yesterday 2.49 Today 2.54 Yesterday 2.54

MELROSE Rainfall Today Yesterday Today Yesterday Today Yesterday

TOTALS Rainfall Today Yesterday Today Yesterday Today Yesterday

Date 7-4-14

Date 7-5-14

Start Time:		Finish Time:		Initials:					
Lift Station	Meter Reading	#1 Pump	#2 Pump	Lift Station	Meter Reading	#1 Pump	#2 Pump		
I - 30	Rainfall Today 73338 Yesterday 73199	Today 15394.10 Yesterday 15389.81	Today 2708.6 Yesterday 2797.3	I - 30	Rainfall Today 73450 Yesterday 73338	Today 15396.95 Yesterday 15394.10	Today 2815.0 Yesterday 2808.6		
TOTALS	139	4.29	11.3	TOTALS	112	2.85	6.4		
HWY 32	Rainfall Today 53178 Yesterday 53156	Today 1832.8 Yesterday 1832.8	Today 1388.3 Yesterday 1386.3	HWY 32	Rainfall Today 53192 Yesterday 53178	Today 1832.8 Yesterday 1832.8	Today 1388.5 Yesterday 1388.3		
TOTALS	22	0	2.0	TOTALS	141	0	1.2		
UNION PACIFIC	Rainfall Today 6802 Yesterday 6759	Today 31982.5 Yesterday 31982.5	Today 39152.6 Yesterday 39146.8	UNION PACIFIC	Rainfall Today 6832 Yesterday 6802	Today 31984.6 Yesterday 31982.5	Today 39154.5 Yesterday 39152.6		
TOTALS	43	0	5.8	TOTALS	30	2.1	1.9		
N SIDE PARK	Rainfall Today 31543 Yesterday 31530	Today Yesterday	Today Yesterday	N SIDE PARK	Rainfall Today 31548 Yesterday 31543	Today Yesterday	Today Yesterday		
TOTALS	5			TOTALS	5				
DATE	Start Time:		Finish Time:		DATE	Start Time:		Finish Time:	
	Initials:		Initials:			Initials:		Initials:	
DODD ST	Rainfall Today 21263 Yesterday 21236	Today 41833.17 Yesterday 41832.0	Today 14407.68 Yesterday 14406.94	DODD ST	Rainfall Today 21281 Yesterday 21263	Today 41834.9 Yesterday 41833.17	Today 14408.72 Yesterday 14407.68		
TOTALS	27	1.7	1.71	TOTALS	18	1.2	1.04		
BLACK BRANCH	Rainfall Today 14385 Yesterday 14378	Today 1537.86 Yesterday 1537.73	Today 1598.20 Yesterday 1597.90	BLACK BRANCH	Rainfall Today 14392 Yesterday 14385	Today 1537.98 Yesterday 1537.85	Today 1598.50 Yesterday 1598.20		
TOTALS	7	0.12	0.30	TOTALS	7	0.13	0.30		
TRADE SCHOOL	Rainfall Today 53685 Yesterday 53648	Today 5654.04 Yesterday 5652.12	Today 5379.70 Yesterday 5377.87	TRADE SCHOOL	Rainfall Today 53722 Yesterday 53685	Today 5655.92 Yesterday 5654.04	Today 5321.59 Yesterday 5319.70		
TOTALS	37	1.92	1.83	TOTALS	37	1.98	1.89		
MELROSE	Rainfall Today Yesterday	Today Yesterday	Today Yesterday	MELROSE	Rainfall Today Yesterday	Today Yesterday	Today Yesterday		
TOTALS				TOTALS					

Date 7-6-14

Date 7-7-14

Start Time:		Finish Time:		Initials:			
Lift Station	Meter Reading	#1 Pump	#2 Pump	Lift Station	Meter Reading	#1 Pump	#2 Pump
1 - 30	Today 73515 Yesterday 73450	Today 15400.12 Yesterday 15396.95	Today 2815.0 Yesterday 2815.0	1 - 30	Today 73573 Yesterday 73515	Today 15401.55 Yesterday 15400.12	Today 2816.17 Yesterday 2815.0
TOTALS	65	3.17	.0	TOTALS	52	1.43	1.7
HWY 32	Today 53199 Yesterday 53192	Today 1832.8 Yesterday 1832.8	Today 1390.0 Yesterday 1389.5	HWY 32	Today 53203 Yesterday 53199	Today 1832.8 Yesterday 1832.8	Today 1390.41 Yesterday 1390.0
TOTALS	7	0	.5	TOTALS	41	0	.41
UNION	Today 6859 Yesterday 6832	Today 31926.17 Yesterday 31924.6	Today 39156.41 Yesterday 39154.5	UNION	Today 6886 Yesterday 6859	Today 31988.3 Yesterday 31986.7	Today 39158.5 Yesterday 39156.41
TOTALS	27	2.1	1.9	TOTALS	27	1.6	2.1
N SIDE	Today 315541 Yesterday 31548	Today Yesterday	Today Yesterday	N SIDE	Today 31558 Yesterday 315541	Today Yesterday	Today Yesterday
PARK				PARK			
TOTALS	6			TOTALS	5		

DATE _____

Start Time: _____ Finish Time: _____ Initials: _____

Start Time:		Finish Time:		Initials:			
Lift Station	Meter Reading	#1 Pump	#2 Pump	Lift Station	Meter Reading	#1 Pump	#2 Pump
DODD ST	Today 213041 Yesterday 21281	Today 41836.41 Yesterday 41834.9	Today 141410.13 Yesterday 141408.72	DODD ST	Today 21320 Yesterday 213041	Today 41837.5 Yesterday 41836.41	Today 141411.10 Yesterday 141410.13
TOTALS	23	1.5	1.21	TOTALS	16	1.1	.97
BLACK	Today 14394 Yesterday 14392	Today 1538.21 Yesterday 1537.18	Today 1598.93 Yesterday 1598.50	BLACK	Today 14404 Yesterday 14399	Today 1538.53 Yesterday 1538.21	Today 1599.10 Yesterday 1598.93
TOTALS	7	.23	.43	TOTALS	5	.32	.17
TRADE	Today 53759 Yesterday 53722	Today 5657.24 Yesterday 5655.92	Today 5323.51 Yesterday 5321.39	TRADE	Today 53792 Yesterday 53759	Today 5659.53 Yesterday 5657.24	Today 5323.21 Yesterday 5323.51
SCHOOL				SCHOOL			
TOTALS	37	1.92	1.92	TOTALS	33	1.69	1.70
MELROSE	Today Yesterday	Today Yesterday	Today Yesterday	MELROSE	Today Yesterday	Today Yesterday	Today Yesterday
TOTALS				TOTALS			

Date 7-8-14

Date 7-9-14

Start Time:		Finish Time:		Initials:		Start Time:		Finish Time:		Initials:			
Lift Station	Meter Reading	#1 Pump	#2 Pump	Lift Station	Meter Reading	#1 Pump	#2 Pump						
1-30	Today 73663 Yesterday 73573	Today 15403.87 Yesterday 15401.55	Today 2880.41 Yesterday 2816.77	1-30	Today 73735 Yesterday 73663	Today 15405.62 Yesterday 15403.87	Today 2882.4 Yesterday 2820.4						
TOTALS	90	2.32	4.7	TOTALS	72	1.55	2						
HWY 32	Today 53222 Yesterday 53203	Today 1832.8 Yesterday 1832.8	Today 1391.9 Yesterday 1390.4	HWY 32	Today 53239 Yesterday 53222	Today 1837.8 Yesterday 1832.8	Today 1393.5 Yesterday 1391.9						
TOTALS	19	0	1.5	TOTALS	17	0	1.6						
UNION PACIFIC	Today 6929 Yesterday 6886	Today 31991.2 Yesterday 31988.3	Today 39161.2 Yesterday 39158.5	UNION PACIFIC	Today 6925 Yesterday 6929	Today 31994.4 Yesterday 31991.2	Today 39164.5 Yesterday 39161.2						
TOTALS	43	2.9	2.7	TOTALS	46	3.2	3.3						
N SIDE PARK	Today 31563 Yesterday 31559	Today Yesterday	Today Yesterday	N SIDE PARK	Today 31566 Yesterday 31563	Today Yesterday	Today Yesterday						
TOTALS	4			TOTALS	3								
DATE	Start Time:		Finish Time:		Initials:		DATE	Start Time:		Finish Time:		Initials:	
DODD ST	Today 21344 Yesterday 21320	Today 4839.1 Yesterday 4837.5	Today 12412.57 Yesterday 12411.10	DODD ST	Today 21368 Yesterday 21344	Today 4840.7 Yesterday 4839.1	Today 14414.06 Yesterday 14412.57						
TOTALS	24	1.6	1.47	TOTALS	24	1.6	1.43						
BLACK BRANCH	Today 14411 Yesterday 141041	Today 1538.93 Yesterday 1538.53	Today 1599.43 Yesterday 1598.10	BLACK BRANCH	Today 4418 Yesterday 44111	Today 1539.17 Yesterday 1538.93	Today 1599.78 Yesterday 1599.43						
TOTALS	7	0.40	0.33	TOTALS	7	0.24	0.35						
TRADE SCHOOL	Today 53826 Yesterday 53792	Today 5661.28 Yesterday 5659.53	Today 5326.96 Yesterday 5325.21	TRADE SCHOOL	Today 53822 Yesterday 53826	Today 5663.65 Yesterday 5661.28	Today 53291.74 Yesterday 5326.96						
TOTALS	34	1.75	1.75	TOTALS	46	2.37	2.18						
MELROSE	Today Yesterday	Today Yesterday	Today Yesterday	MELROSE	Today Yesterday	Today Yesterday	Today Yesterday						
TOTALS				TOTALS									

Date 7-10-14

Start Time: 6:30 AM Finish Time: 8:30 AM Initials: R.C.

Lift Station	Meter Reading	#1 Pump	#2 Pump
I - 30	Rainfall Today 43849 Yesterday 73735	Today 15408.47 Yesterday 15405.62	Today 2825.6 Yesterday 2822.4

TOTALS	114	2.85	3.2
HWY 32	Rainfall Today 53282 Yesterday 53239	Today 18327.8 Yesterday 1837.8	Today 1397.4 Yesterday 1393.5

TOTALS	43	0	3.9
UNION PACIFIC	Rainfall Today 7048 Yesterday 6975	Today 31992 Yesterday 31994.4	Today 39169.6 Yesterday 39164.5

TOTALS	73	4.6	5.1
N SIDE PARK	Rainfall Today 31573 Yesterday 31566	Today Yesterday	Today Yesterday

TOTALS	7		
DATE			

Date 7-11-14

Start Time: Finish Time: Initials:

Lift Station	Meter Reading	#1 Pump	#2 Pump
I - 30	Rainfall Today 73926 Yesterday 73849	Today 15410.31 Yesterday 15408.47	Today 2827.9 Yesterday 2825.6

TOTALS	77	1.82	2.3
HWY 32	Rainfall Today 53304 Yesterday 53282	Today 18322 Yesterday 1832.8	Today 1397.3 Yesterday 1397.4

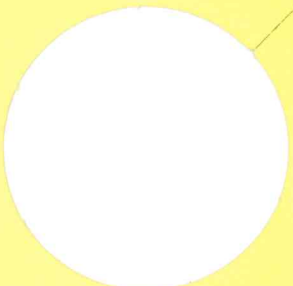
TOTALS	22	0	1.9
UNION PACIFIC	Rainfall Today 7101 Yesterday 7048	Today 32002.7 Yesterday 31999.0	Today 39173.1 Yesterday 39169.6

TOTALS	53	3.7	3.5
N SIDE PARK	Rainfall Today 31576 Yesterday 31573	Today Yesterday	Today Yesterday

TOTALS	3		
DATE			

Start Time:	Finish Time:	Initials:	
DODD ST	Rainfall Today 21406 Yesterday 21368	Today 4843.3 Yesterday 4840.7	Today 14416.36 Yesterday 14414.00
TOTALS	38	2.6	2.36
BLACK BRANCH	Rainfall Today 4425 Yesterday 4418	Today 1539.57 Yesterday 1539.17	Today 1600.11 Yesterday 1599.78
TOTALS	7	0.40	0.33
TRADE SCHOOL	Rainfall Today 53971 Yesterday 53872	Today 5668.82 Yesterday 5663.65	Today 5334.20 Yesterday 5329.14
TOTALS	99	5.17	5.06
MELROSE	Rainfall Today Yesterday	Today Yesterday	Today Yesterday
TOTALS			

Start Time:	Finish Time:	Initials:	
DODD ST	Rainfall Today 21429 Yesterday 21406	Today 4843.3 Yesterday 4843.3	Today 14417.81 Yesterday 14416.36
TOTALS	23	1.5	1.45
BLACK BRANCH	Rainfall Today 14131 Yesterday 14425	Today 1539.89 Yesterday 1539.57	Today 1600.45 Yesterday 1600.11
TOTALS	6	3.2	0.34
TRADE SCHOOL	Rainfall Today 54012 Yesterday 53971	Today 5670.94 Yesterday 5668.82	Today 5335.81 Yesterday 5334.20
TOTALS	411	2.12	1.61
MELROSE	Rainfall Today Yesterday	Today Yesterday	Today Yesterday
TOTALS			



City of Hope SMOKE TESTING NOTICE TO RESIDENT

For the next few days, inspection crews will conduct a physical survey of the wastewater collection system. Pipeline Analysis will perform this study, which involves opening manholes in the streets and backyard utility easements. Information gained from this study will be used to repair and improve the wastewater collection system.

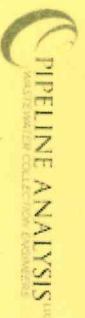
One important task of the survey will be **smoke testing** of sewer lines to locate breaks and defects in the system. During this testing, white smoke will exit through vent pipes on the roofs of homes and through sewer line breaks. **The smoke is non-toxic, leaves no residue, and creates no fire hazard.** The smoke should not enter your home unless defective plumbing exists or drain traps are dry.

If you have seldom-used drains, please pour a gallon of water in the drain to fill the drain trap. This procedure will help prevent the possibility of smoke entering your living areas through those drains.

Field crews will perform testing of all sewers in the area. **At no time will field crews have to enter your business or residence.**

Your cooperation is appreciated. Should you have any additional questions concerning this study or if you desire special assistance, please phone:

800-637-0164



City of Hope Public Works
870-777-8644