

ARKANSAS DEPARTMENT OF
POLLUTION CONTROL & ECOLOGY

SUBJECT EXPENDITURES FOR
RENOVATION OF EXECUTIVE OFFICES

MINUTE ORDER NO. 76-28

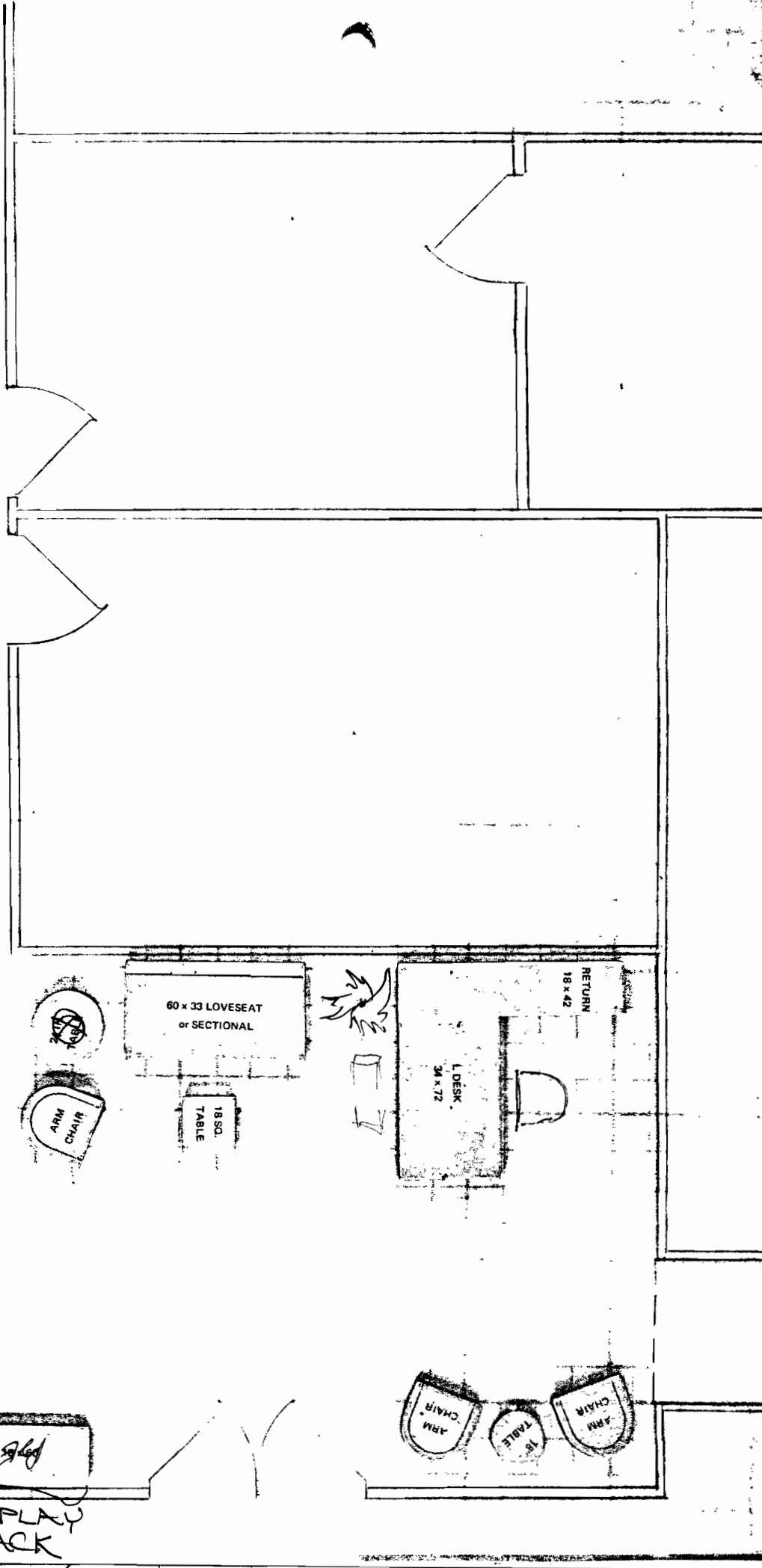
PAGE 1 of 1 PAGES

The Commission hereby authorizes the Department to advertise for bids for carpet, draperies and furniture to renovate the reception area, the Commission room and the executive offices. Cost estimates range between \$10,000 and \$12,000.

COMMIS-
SIONERS

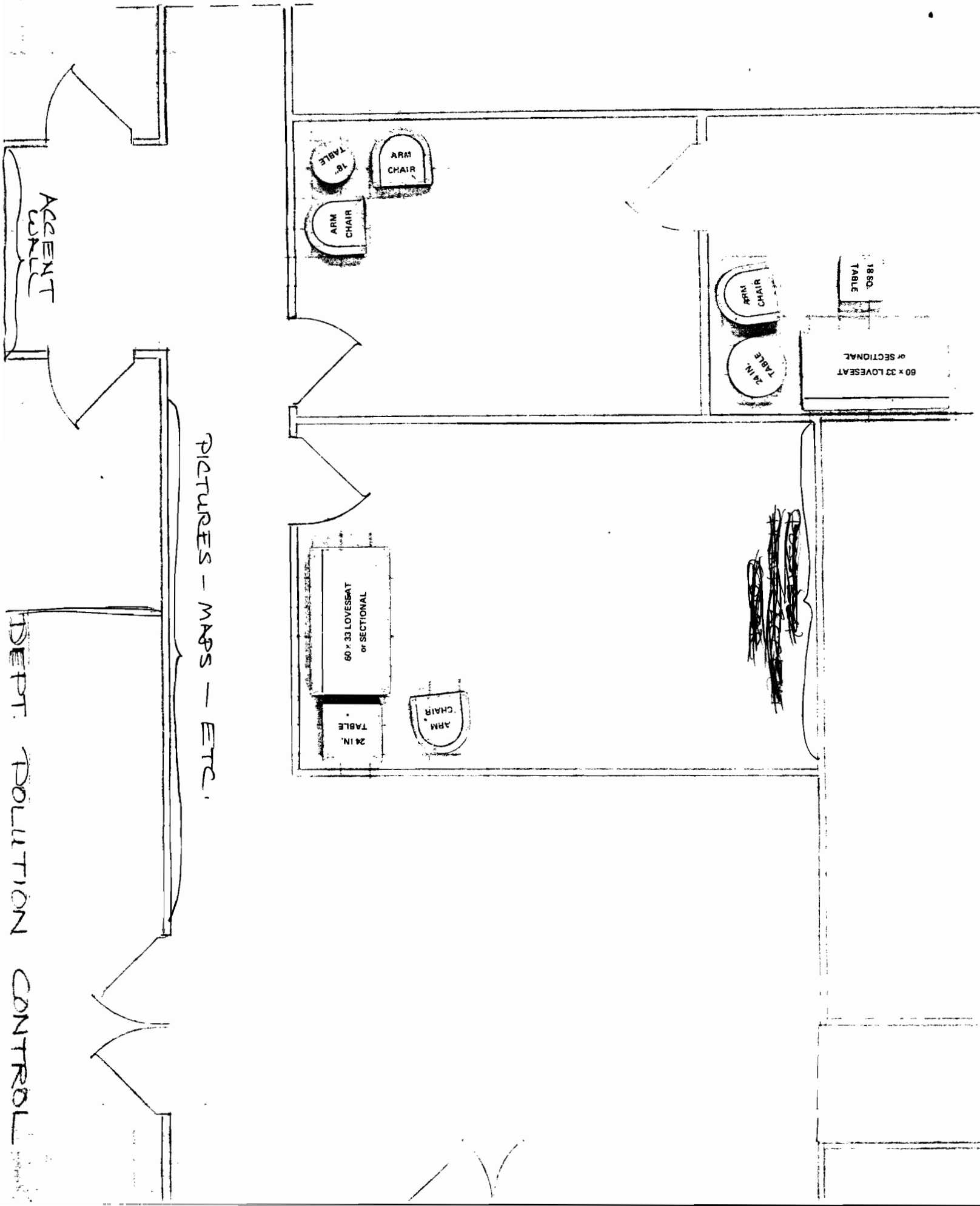
[Handwritten signatures and notes]
P.C.P. - long E.Ye.
for NFW

Billy Finn Presented by Sacrey Date approved 6/25/76
Chairman



PLAN C

DEPT. POLLUTION CONTROL
SCALE: 1/4" = 1'-0"



PICTURES - MAPS - ETC.

OFFICE LAYOUTS
OFFICE DECORATORS
COMMERCIAL INSTALLATIONS
SCHOOLS AND BUSINESS
REFINISHING AND UPHOLSTERING

Dailey's OFFICE FURNITURE

LEADING MAKES OF
WOOD & STEEL
OFFICE FURNITURE
WALL ACCESSORIES
LAMPS

304-308 Rock St. • P. O. Box 388
LITTLE ROCK, ARKANSAS 72203
Tel. FR 6-2361

May 26, 1976

Mrs. Betty Clemmons
Department of Pollution Control
8001 National Drive
Little Rock, AR 72209

Dear Mrs. Clemmons:

We are pleased to quote you on the following items for your offices.
Please note all prices are estimates.

A. Reception Area:

(1)	Monarch love seat #848-422 upholstered in 128-76 Birch	\$419.25
(1)	Monarch chair #848-412 upholstered in 128-76 Birch	290.25
(1)	Patrician bench #WB-S-S upholstered in L-0172 suede	201.00
(2)	Chaircraft chairs #1264 upholstered in C.O.M. fabric from Patrician #1534 Brown/Beige with -18 Briar finish \$128.25 ea.	256.50
(2) X	Patrician secretarial chair #22304 upholstered in US-81 Mocha with seat of 1537 Brown	107.25
(1)	Alma desk #4062-3	965.14
(1)	Alma corner table #4057	110.50
(2)	Alma end tables #4020-S	\$104.59 ea. 209.08

Draperies:

(1)	Pair draperies of ARC C.O.M. #AC-10236 - FLAX - KLINGTON (Includes all labor, materials, appliances, and services necessary for complete fabrication and installation of draperies.)	162.00
-----	---	--------

LITTLE ROCK'S FAVORITE OFFICE FURNITURE HOUSE

Lamps & Accessories	Approx.	\$ 375.00
Carpet:		
Reception area and hallway Kings Court #1375 Rosewood. Approximately 61 1/3 yds @ 13.00 yd. (Includes pad and installation.)		797.29
Wallpaper:		
<i>Seabrook # 932-3313 grasscloth</i> Reception area and hallway. Approximately 24 single rolls @ 20.00 per roll		480.00
B. <u>Conference Room</u>		
<i>Benches</i> Kings Court #1333 Peru Natural; Approx. 90 yds. @ 13.00 per yd. (Includes pad and installation.)		1,170.00
C. <u>Executive Office</u>		
(1st office to the right) <i>Desk + chair</i>		
(1) Monarch #848-432 sofa upholstered in #128-17 Cerise		561.75
(1) Monarch #848-412 chair upholstered in #128-17 Cerise		290.25
(1) Alma corner table #4057		110.50
(1) Alma #4020-S table		104.54
Lamps and accessories	Approx.	300.00
Carpet:		
Kings Court #1333 Peru Natural. (Includes pad and i nstallation) Approx. 24 yds. @ 13.00 yd.		312.00
D. <u>Executive Secretary Area:</u>		
(2) Monarch chairs #849-002 upholstered in #138-74 Sierra	\$179.25 ea.	358.50
<i>Secretary desk + chair</i>		
(1) Alma corner table #4057		110.50
Lamp and accessories	Approx.	250.00

Carpets:

Kings Court #1333 Peru Natural. (Includes pad and installation.) Approx. 18 2/3 yd. @ \$13.00 yd.	242.58
---	--------

E. Executive Office

(2nd office on the right)

~~Chair~~ Chair

Love Seat

- | | |
|--|-----------------------------|
| (1) Monarch #848-432 sofa upholstered in #138-74 Sierra | 419.25
561.75 |
| (1) Monarch #848-412 chair upholstered in #124-88 Nutmeg | 332.25 |
| (1) Alma #4057 corner table | 110.50 |
| (1) Alma #4020-S table | 104.54 |

Carpet:

Kings Court #1333 Peru Natural. Approximately 20 2/3 yds. @ \$13.00 yd.	268.58
---	--------

Lamps and Accessories	Approx. 300.00
-----------------------	----------------

Thank you for giving us the opportunity to be of service to you.

Sincerely,

DAILEY'S DESIGN CENTER

Debbie Fondren

Debbie Fondren
Interior Designer

DF:clc

Carpet for 4-5-6-7-8