

Sample ID	Units	Total PAHs	TPH	Total Resolved Hydrocarbons	Unresolved Complex Mixture	Total Alkanes
COVE-011	µg/net	0.166	7 J	39	< 20 U	30.1
SED-DA-054	mg/kg	0.127	72	41	30	6.3



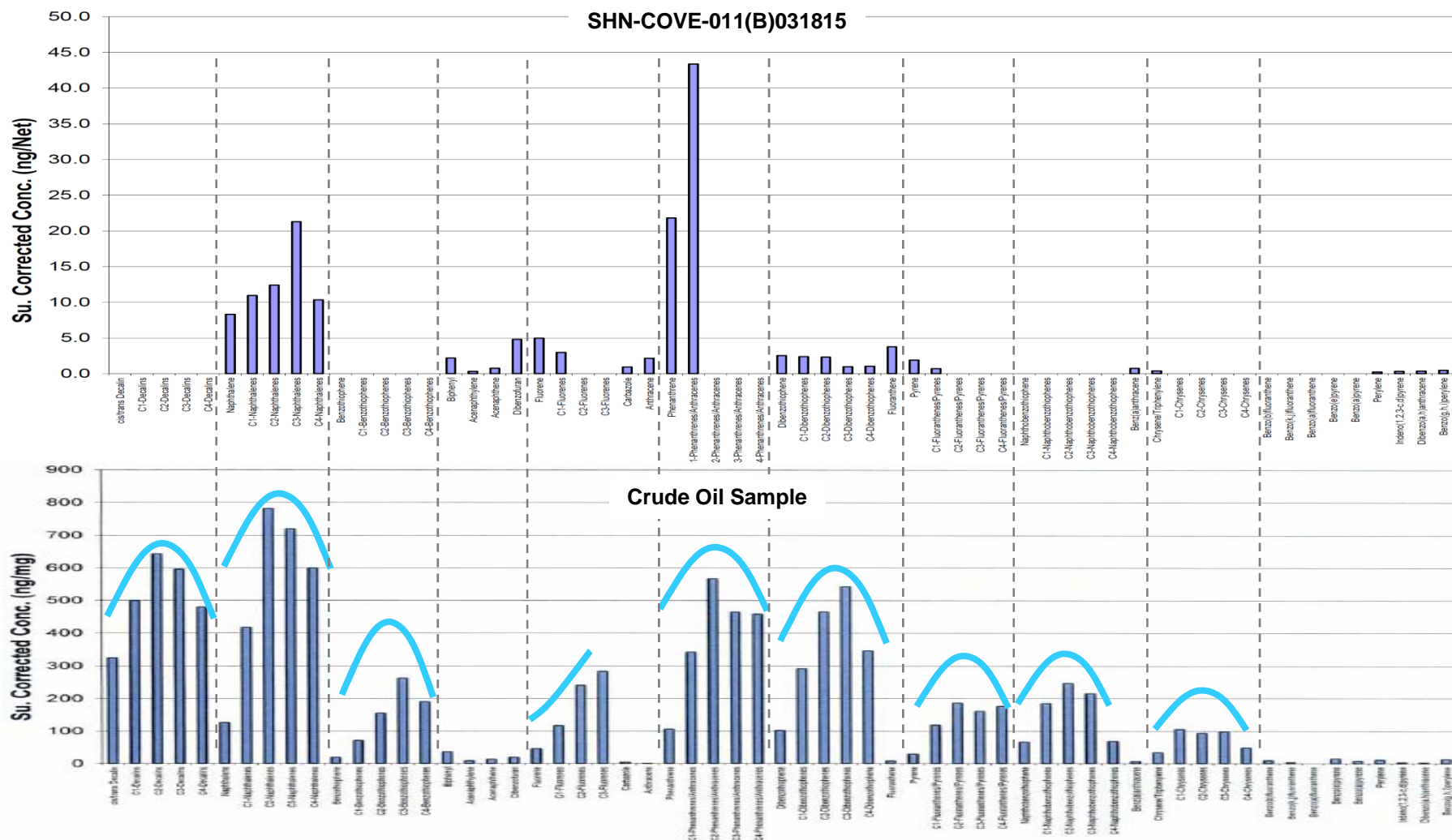
Cover (No Particular Structure) of Brittle Silver Gray Sheen

Legend:

- Brittle Sheen Sample
- Sediment Sample

MAYFLOWER PIPELINE INCIDENT RESPONSE
EXXONMOBIL ENVIRONMENTAL SERVICES COMPANY
MAYFLOWER POST-CONSTRUCTION SAMPLING

SHEEN AND SEDIMENT SAMPLING LOCATIONS



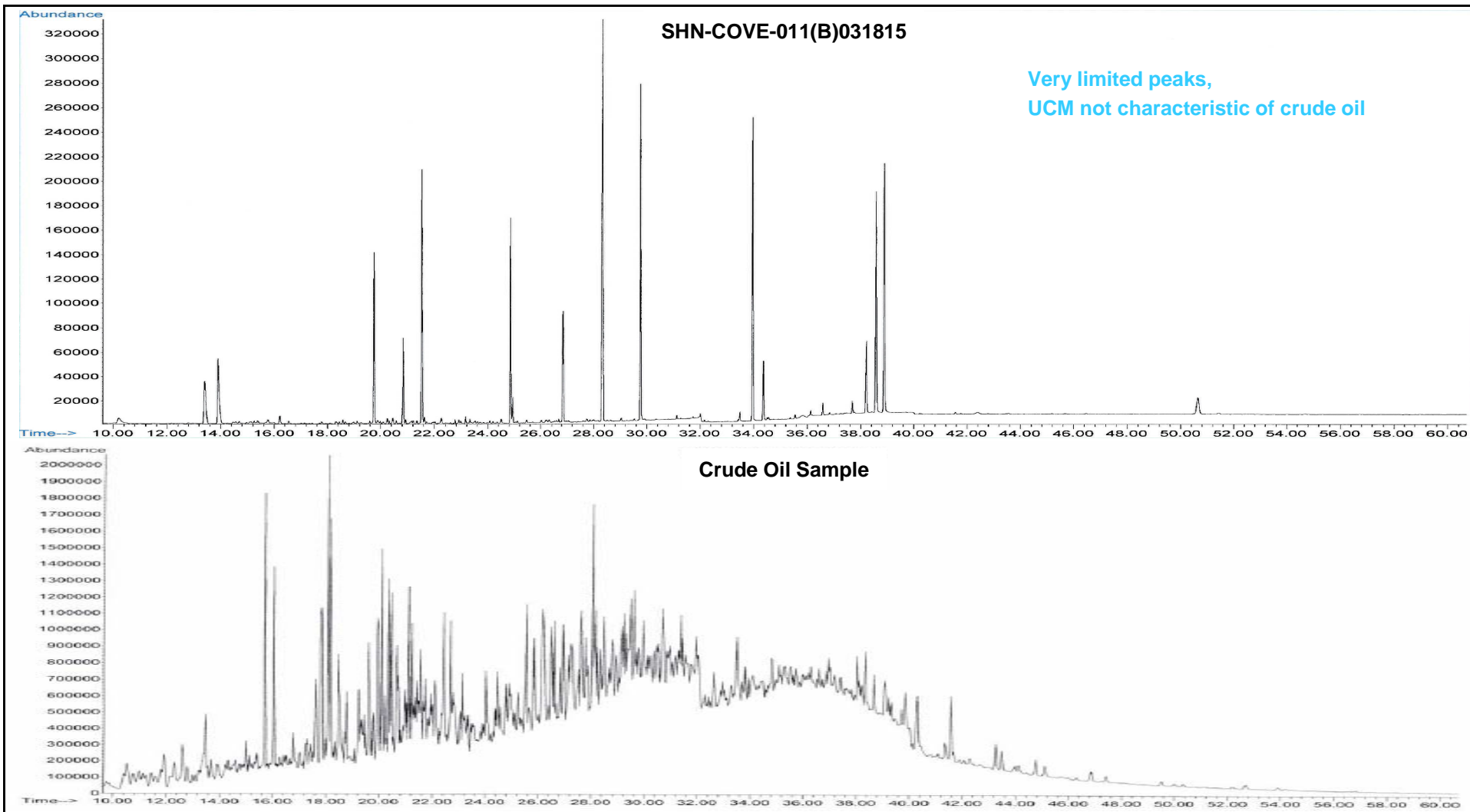
Note:

- Order of PAHs shown on chart is from cis/trans-decalin through benzo(g,h,i)perylene.

Sheen sample does not resemble the crude oil sample.

**MAYFLOWER PIPELINE INCIDENT RESPONSE
EXXONMOBIL ENVIRONMENTAL SERVICES COMPANY
MAYFLOWER POST-CONSTRUCTION SAMPLING**

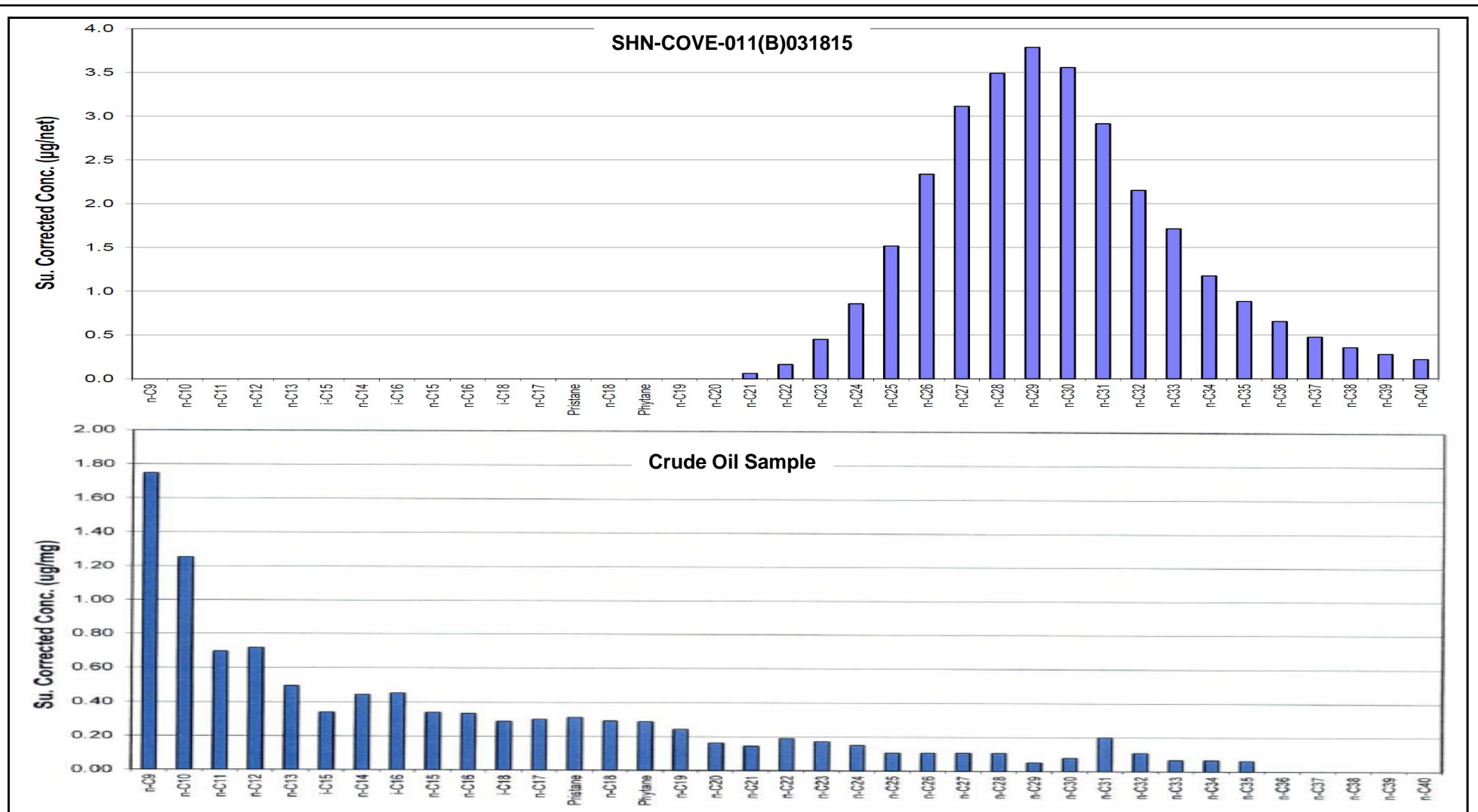
**PAH BAR CHART COMPARISON
FOR SHEEN SAMPLE**



Sheen sample does not resemble the crude oil sample.

MAYFLOWER PIPELINE INCIDENT RESPONSE
EXXONMOBIL ENVIRONMENTAL SERVICES COMPANY
MAYFLOWER POST-CONSTRUCTION SAMPLING

PAH CHROMATOGRAM COMPARISON
FOR SHEEN SAMPLE



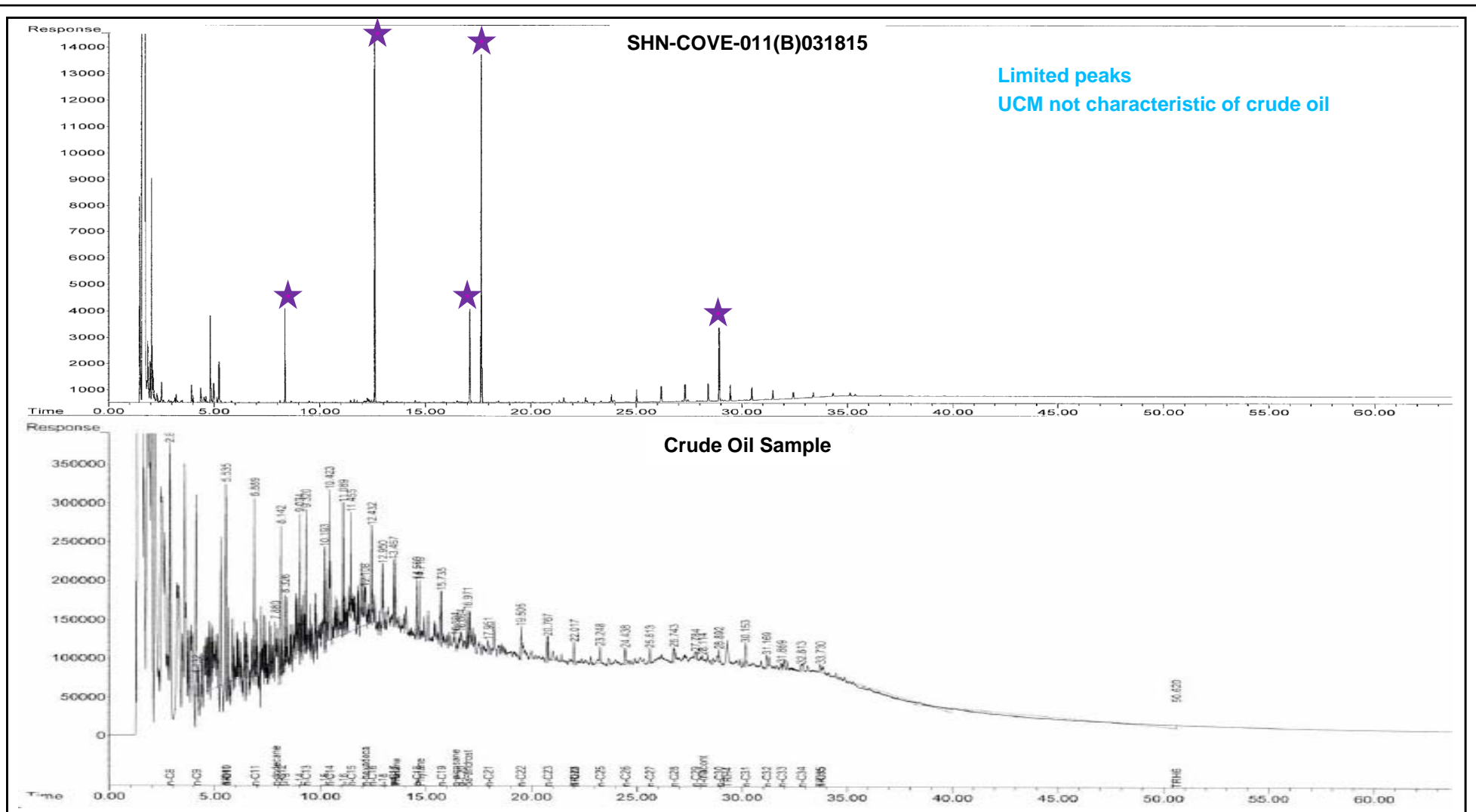
Note:

- Order of aliphatic hydrocarbons shown on chart is from n-C9 through n-C40.

Sheen sample does not resemble the crude oil sample.

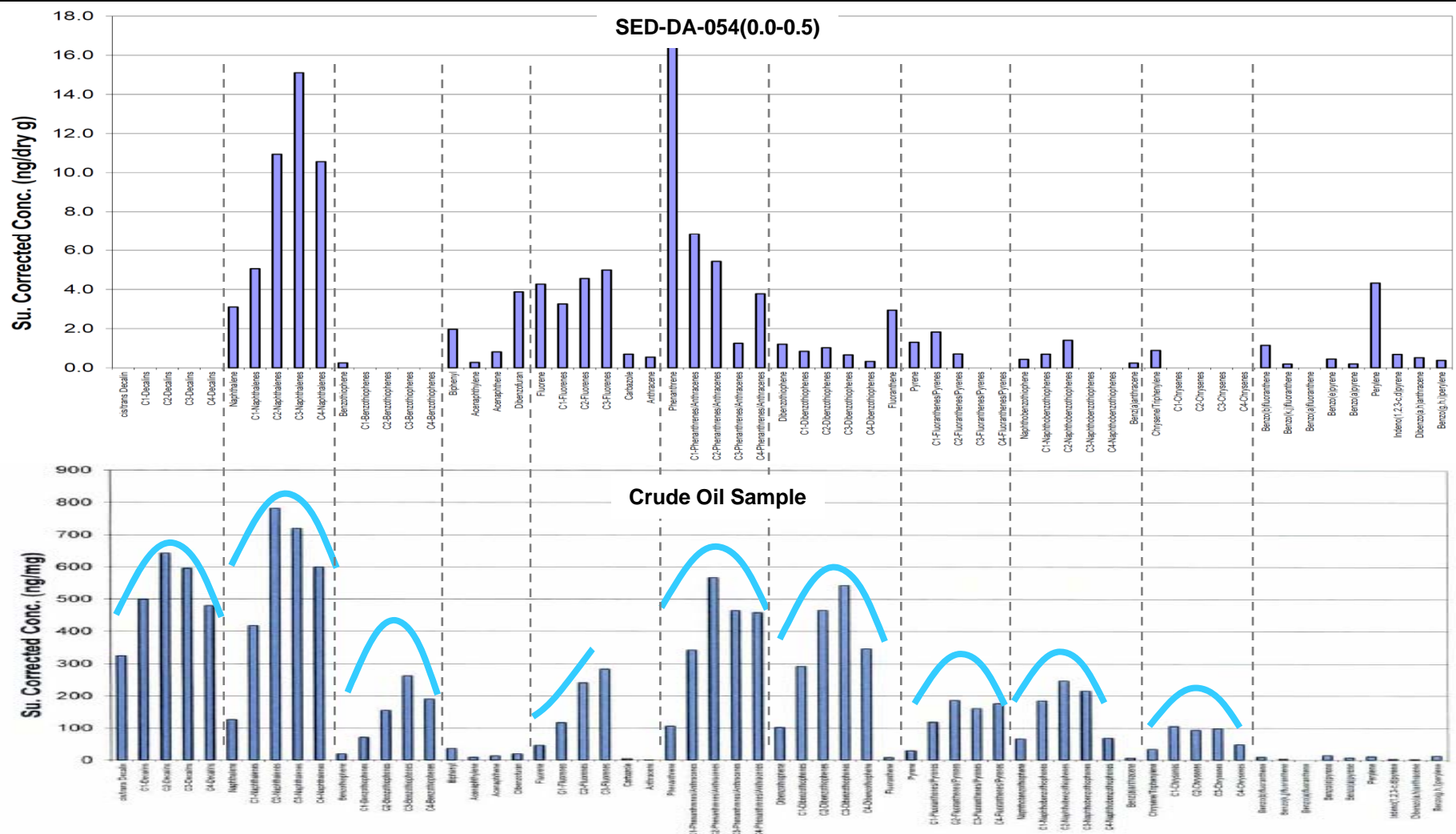
MAYFLOWER PIPELINE INCIDENT RESPONSE
EXXONMOBIL ENVIRONMENTAL SERVICES COMPANY
MAYFLOWER POST-CONSTRUCTION SAMPLING

ALIPHATIC HYDROCARBON BAR CHART
COMPARISON FOR SHEEN SAMPLE



MAYFLOWER PIPELINE INCIDENT RESPONSE
EXXONMOBIL ENVIRONMENTAL SERVICES COMPANY
MAYFLOWER POST-CONSTRUCTION SAMPLING

TPH CHROMATOGRAM COMPARISON FOR SHEEN SAMPLE



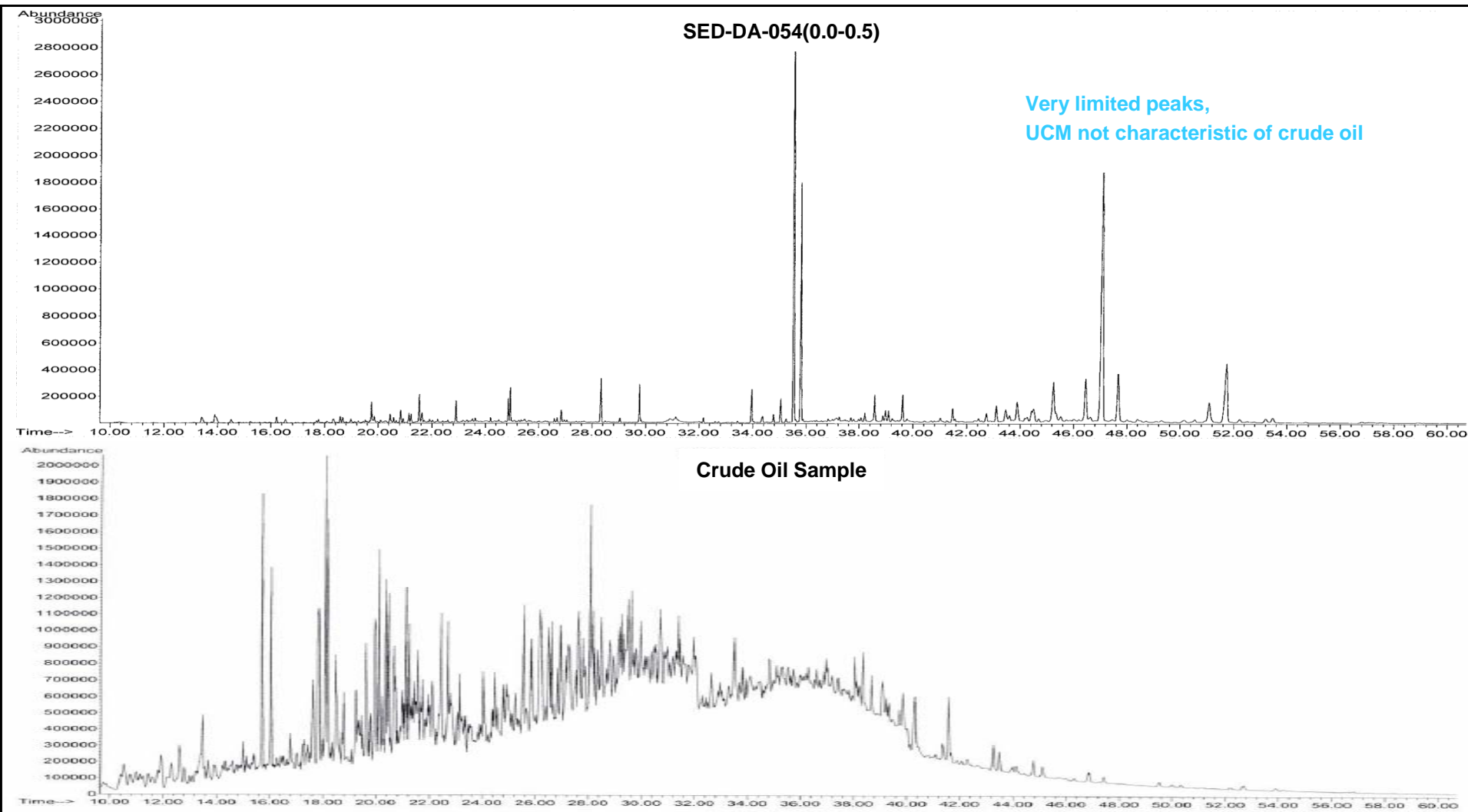
Note:

- Order of PAHs shown on chart is from cis/trans-decalin through benzo(g,h,i)perylene.

Sediment sample does not resemble the crude oil sample.

MAYFLOWER PIPELINE INCIDENT RESPONSE
EXXONMOBIL ENVIRONMENTAL SERVICES COMPANY
MAYFLOWER POST-CONSTRUCTION SAMPLING

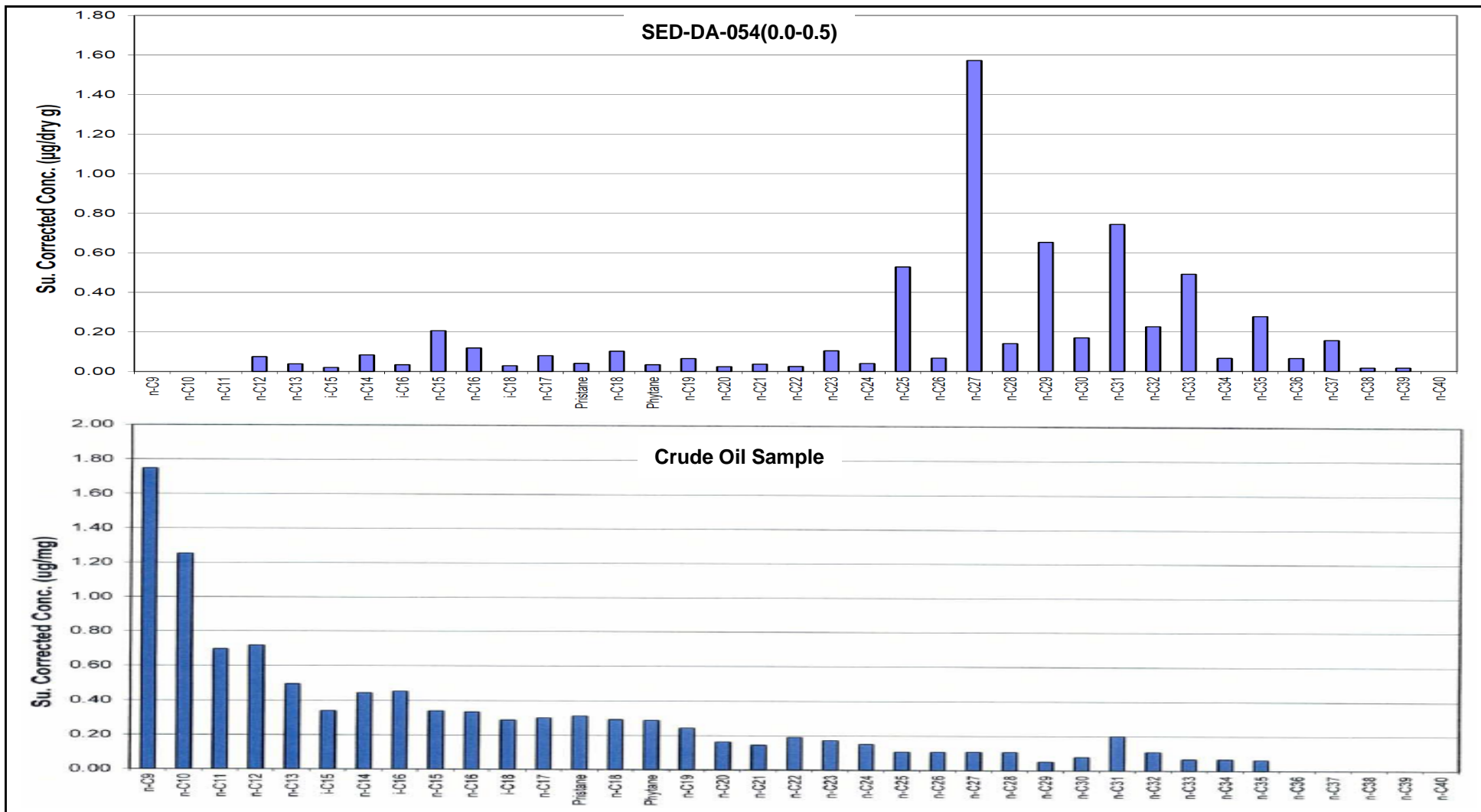
PAH BAR CHART COMPARISON
FOR SEDIMENT SAMPLE



Sediment sample does not resemble the crude oil sample.

MAYFLOWER PIPELINE INCIDENT RESPONSE
EXXONMOBIL ENVIRONMENTAL SERVICES COMPANY
MAYFLOWER POST-CONSTRUCTION SAMPLING

PAH CHROMATOGRAM COMPARISON
FOR SEDIMENT SAMPLE



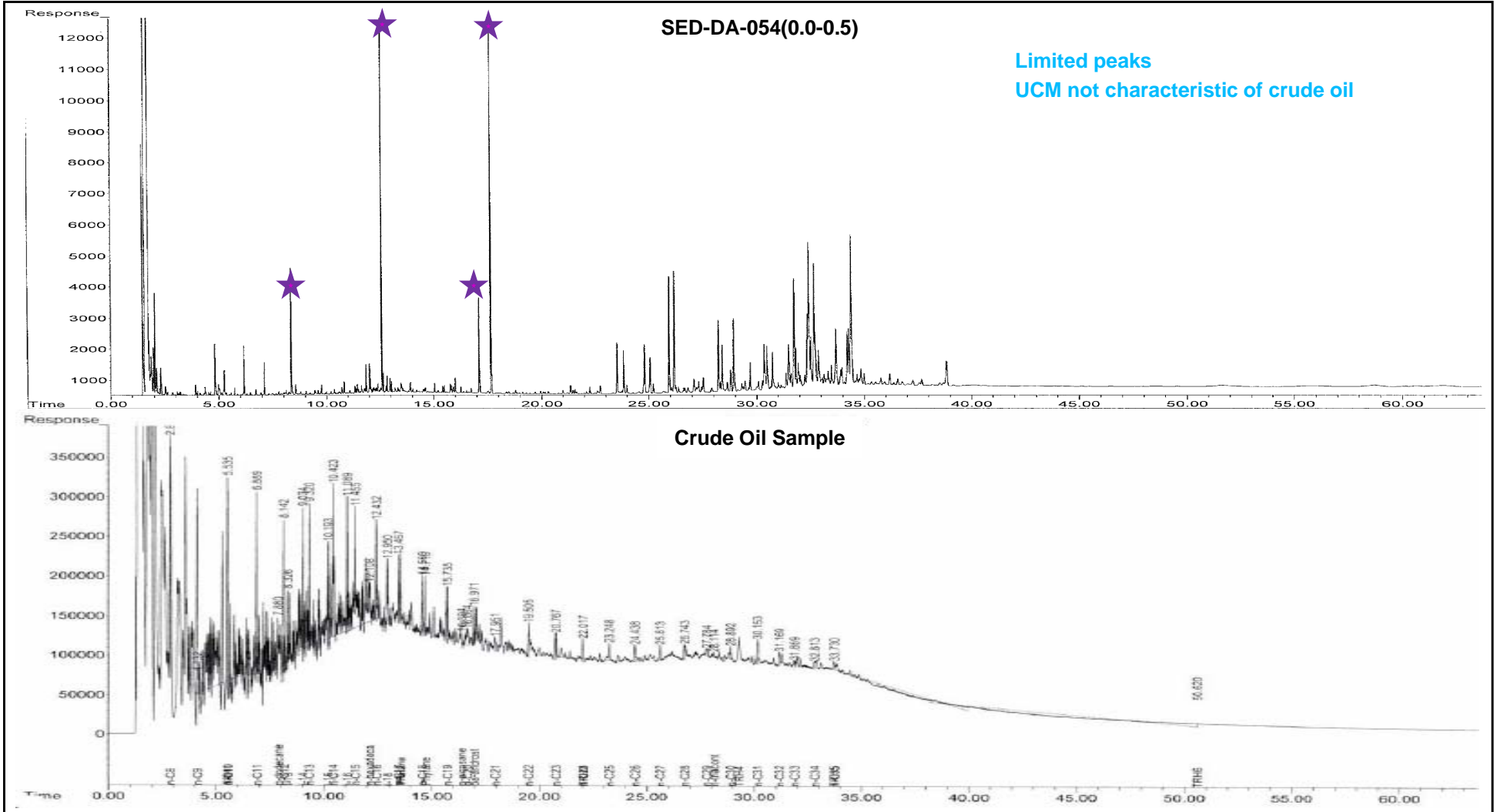
Note:

- Order of aliphatic hydrocarbons shown on chart is from n-C9 through n-C40.

Sediment sample does not resemble the crude oil sample.

MAYFLOWER PIPELINE INCIDENT RESPONSE
EXXONMOBIL ENVIRONMENTAL SERVICES COMPANY
MAYFLOWER POST-CONSTRUCTION SAMPLING

ALIPHATIC HYDROCARBON BAR CHART
COMPARISON FOR SEDIMENT SAMPLE



MAYFLOWER PIPELINE INCIDENT RESPONSE
EXXONMOBIL ENVIRONMENTAL SERVICES COMPANY
MAYFLOWER POST-CONSTRUCTION SAMPLING

TPH CHROMATOGRAM COMPARISON
FOR SEDIMENT SAMPLE

Sample ID	Units	Total PAHs	TPH	Total Resolved Hydrocarbons	Unresolved Complex Mixture	Total Alkanes	PAHs Resemble Crude Oil ¹	TPH Resemble Crude Oil ²	Forensic Analysis Result ³
COVE-011	µg/net	0.166	7 J	39	< 20 U	30.1	No	No	No
SED-DA-054	mg/kg	0.127	72	41	30	6.3	No	No	No

Notes:

1. The resemblance to polycyclic aromatic hydrocarbons (PAHs) is based on the comparison of PAH bar charts and chromatograms.
2. The resemblance to total petroleum hydrocarbons (TPH) is based on the comparison of aliphatic hydrocarbon bar charts and TPH chromatograms.
3. The forensic analysis results provide a conclusion for each sample based on PAH and TPH resemblance .

MAYFLOWER PIPELINE INCIDENT RESPONSE
EXXONMOBIL ENVIRONMENTAL SERVICES COMPANY
MAYFLOWER POST-CONSTRUCTION SAMPLING

**SUMMARY OF SHEEN AND SEDIMENT SAMPLE
ANALYTICAL RESULTS**