

# Mayflower Pipeline Incident Response

## Post-Construction Sheen Monitoring Monthly Report #1: April 2015

Mayflower, Arkansas

**Period:** 04/06/2015 through 04/30/2015

**Monitoring Days:** 04/07/2015 and 04/23/2015\*

\*Biweekly sheen monitoring started on 04/06/2015.

### Observations in Inlet Channel:

- No sheen observed.

### Observations in Cove:

- Two brittle sheens observed, one silver gray and one rainbow/silver gray, in Open Water Area.
- No sheen observed in Heavily Vegetated Area.
- No sheen observed downstream of Heavily Vegetated Area.

Mitigation: None needed

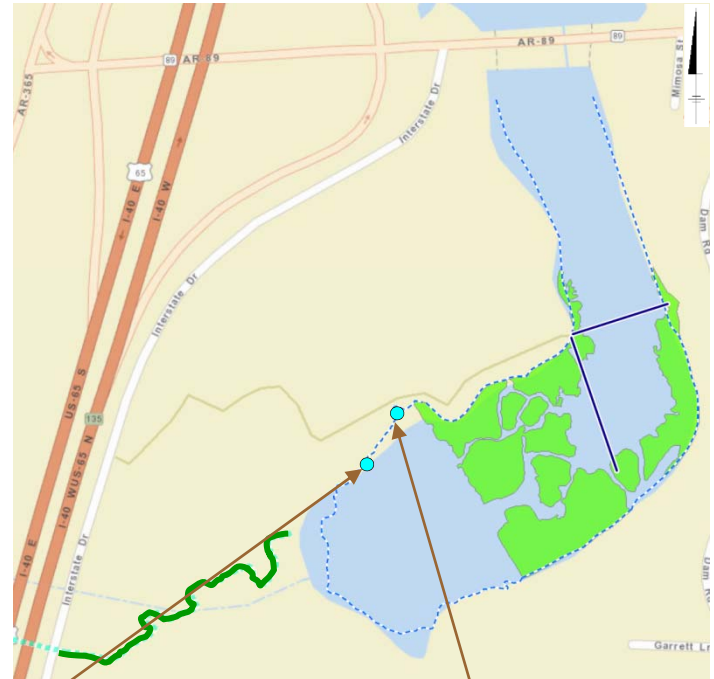
Path Forward for May 2015: Continue biweekly sheen monitoring in cove.

### Legend:

Green Line – No Sheen

Aqua Circle – Brittle Sheen Location

Pink Circle – Non-Brittle Sheen Location



**Cove (Summary of Observations from April 2015)**



**Rainbow/Silver Gray Sheen  
Observation on 04/23/2015**



**Silver Gray Sheen  
Observation on 04/07/2015**

### Notes:

- Brittle sheens are often of natural biogenic origin.
- Non-brittle sheens are often related to anthropogenic sources, including petrogenic sources (e.g., petroleum hydrocarbons).
- Laboratory testing is required to distinguish sheen sources (e.g., crude oil, roadway runoff, natural biologic activity).
- Sheen color (dark/metallic/rainbow/silver gray) and structure (patches/streamers/cover) terminology reference: NOAA 2007. NOAA Open Water Oil Identification Job Aid.