

Sheen Monitoring Report #12

Monitoring Period: Daily* from 01/06/2014 through 01/12/2014

*Limited sheen monitoring due to icy (2-3 inches of snow/ice) and unsafe ground conditions.

Mitigation: Suspected petrogenic sheens were removed using absorbent materials.

Observations in Drainage Ways:

- A-Main
 - One patch of metallic sheens; and one patch of metallic/rainbow sheens observed. Sheens broke apart when disturbed ("brittle")¹.
- A365W
 - No sheens observed.
- A365E
 - No sheens observed.

Observations in Dawson Cove Inlet Channel:

- One streamer and two patches/streamers of metallic/rainbow sheens, one streamer of metallic/rainbow/silver gray sheens, and one patch/streamer of metallic/silver gray sheens observed. Sheens did not break when disturbed ("non-brittle")².

Notes:

1. Brittle sheens are often of natural biogenic origin.
2. Non-brittle sheens are often related to anthropogenic sources, including petrogenic sources (e.g., petroleum hydrocarbons).
3. Laboratory testing is required to distinguish sheen sources (e.g., crude oil, roadway runoff, natural biologic activity).
4. Sheen color (dark/metallic/rainbow/silver gray) and structure (patches/streamers/cover) terminology reference: NOAA 2007. NOAA Open Water Oil Identification Job Aid.

Mayflower Pipeline Incident Response

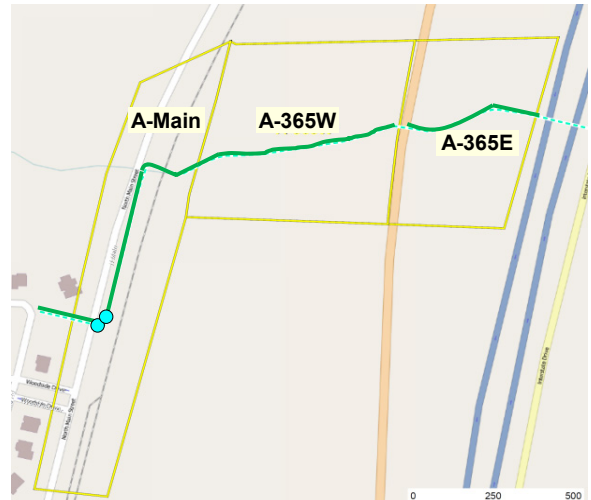
Mayflower, Arkansas

Legend:

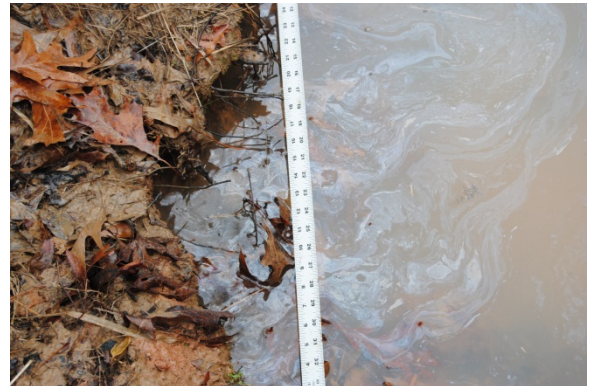
Green Line – No Sheen

Aqua Circle – "Brittle" Sheen Location

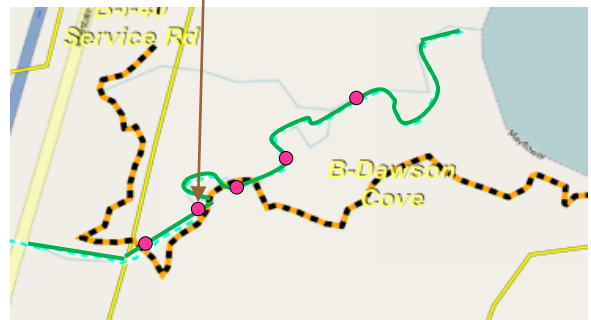
Pink Circle – "Non-Brittle" Sheen Location



Drainage Ways (Summary of Observations from 01/06/2014 through 01/12/2014)



Metallic/Rainbow/Silver Gray Sheen Streamer Observation on 01/10/2014



Dawson Cove Inlet Channel (Summary of Observations from 01/06/2014 through 01/12/2014)

Sheen Monitoring Report #12 (continued)

Mayflower, Arkansas

Monitoring Period: Daily* from 01/06/2014 through 01/12/2014

*Limited sheen monitoring due to icy (2-3 inches of snow/ice) and unsafe ground conditions.

Observations in Dawson Cove:

- No sheens observed.



Icy Conditions at Dawson Cove on 01/07/2014

Legend:

Aqua Circle – “Brittle” Sheen Location

Pink Circle – “Non-Brittle” Sheen Location

OW-1 – Shoreline Observation Location



Dawson Cove (Summary of Observations from 01/06/2014 through 01/12/2014)

Path Forward for 01/13/2014 to 01/19/2014:

- Continue sheen monitoring in all areas.

Notes:

1. Brittle sheens are often of natural biogenic origin.
2. Non-brittle sheens are often related to anthropogenic sources, including petrogenic sources (e.g., petroleum hydrocarbons).
3. Laboratory testing is required to distinguish sheen sources (e.g., crude oil, roadway runoff, natural biologic activity).
4. Sheen color (dark/metallic/rainbow/silver gray) and structure (patches/streamers/cover) terminology reference: NOAA 2007. NOAA Open Water Oil Identification Job Aid.