

Sheen Monitoring Report #34

Period: 06/09/2014 through 06/15/2014

Monitoring Days: 06/10/2014*

*Weekly sheen monitoring started on 03/11/2014.

Summary of Rainfall: A qualifying storm is defined as at least 0.25-inch rainfall in 3 hours and at least 72 hours since the previous qualifying storm.

Date	Maximum 3-hr Precipitation	Qualifying Storm
06/09/2014	0.41 inches	Yes**
06/10/2014	0.00 inches	No
06/11/2014	0.00 inches	No
06/12/2014	0.00 inches	No
06/13/2014	0.00 inches	No
06/14/2014	0.00 inches	No
06/15/2014	0.00 inches	No

**The post-rainfall monitoring and removal event for the qualifying storm from 06/07/2014 through 06/09/2014 was conducted on 06/10/2014 along with the weekly monitoring.

Mitigation: Suspected petrogenic sheens were removed using absorbent materials.

Observations in Cove Inlet Channel:

- No sheen observed.

Observations in Cove:

- Three patches/streamers of silver gray sheen and one patch/streamer of rainbow sheen observed. Sheens did not break when disturbed ("non-brittle")¹.

Path Forward for 06/16/2014 to 06/22/2014 :

- Conduct sheen monitoring in Cove.

Notes:

- Non-brittle sheens are often related to anthropogenic sources, including petrogenic sources (e.g., petroleum hydrocarbons).
- Laboratory testing is required to distinguish sheen sources (e.g., crude oil, roadway runoff, natural biologic activity).
- Sheen color (dark/metallic/rainbow/silver gray) and structure (patches/streamers/cover) terminology reference: NOAA 2007. NOAA Open Water Oil Identification Job Aid.

Mayflower Pipeline Incident Response

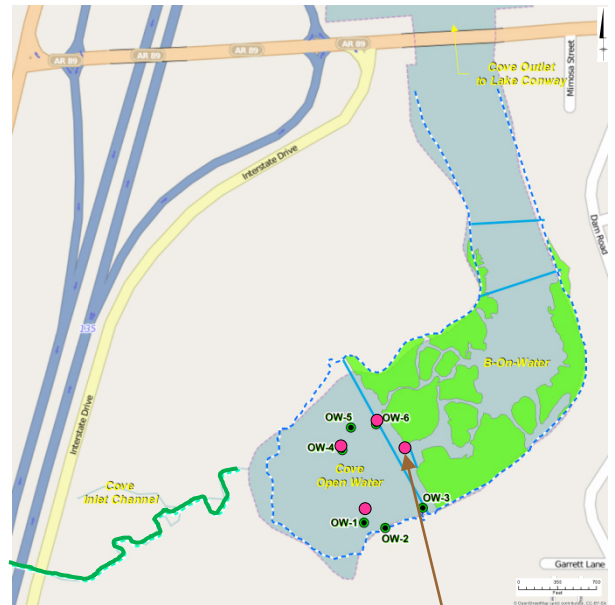
Mayflower, Arkansas

Legend:

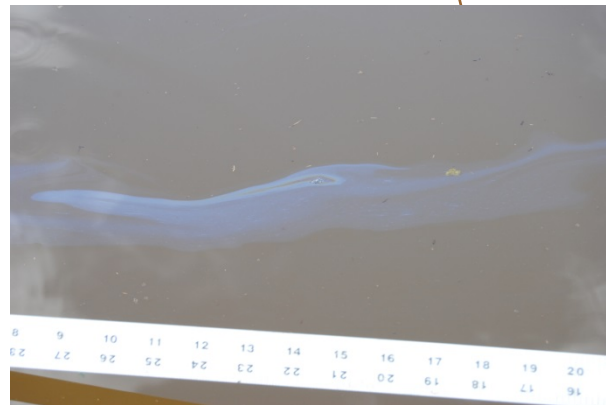
Green Line – No Sheen

Pink Circle – Non-Brittle Sheen Location

OW-1 – Shoreline Observation Location



Cove (Summary of Observations from 06/09/2014 through 06/15/2014)



Silver Gray Sheen Patch/Streamer Observation on 06/10/2014