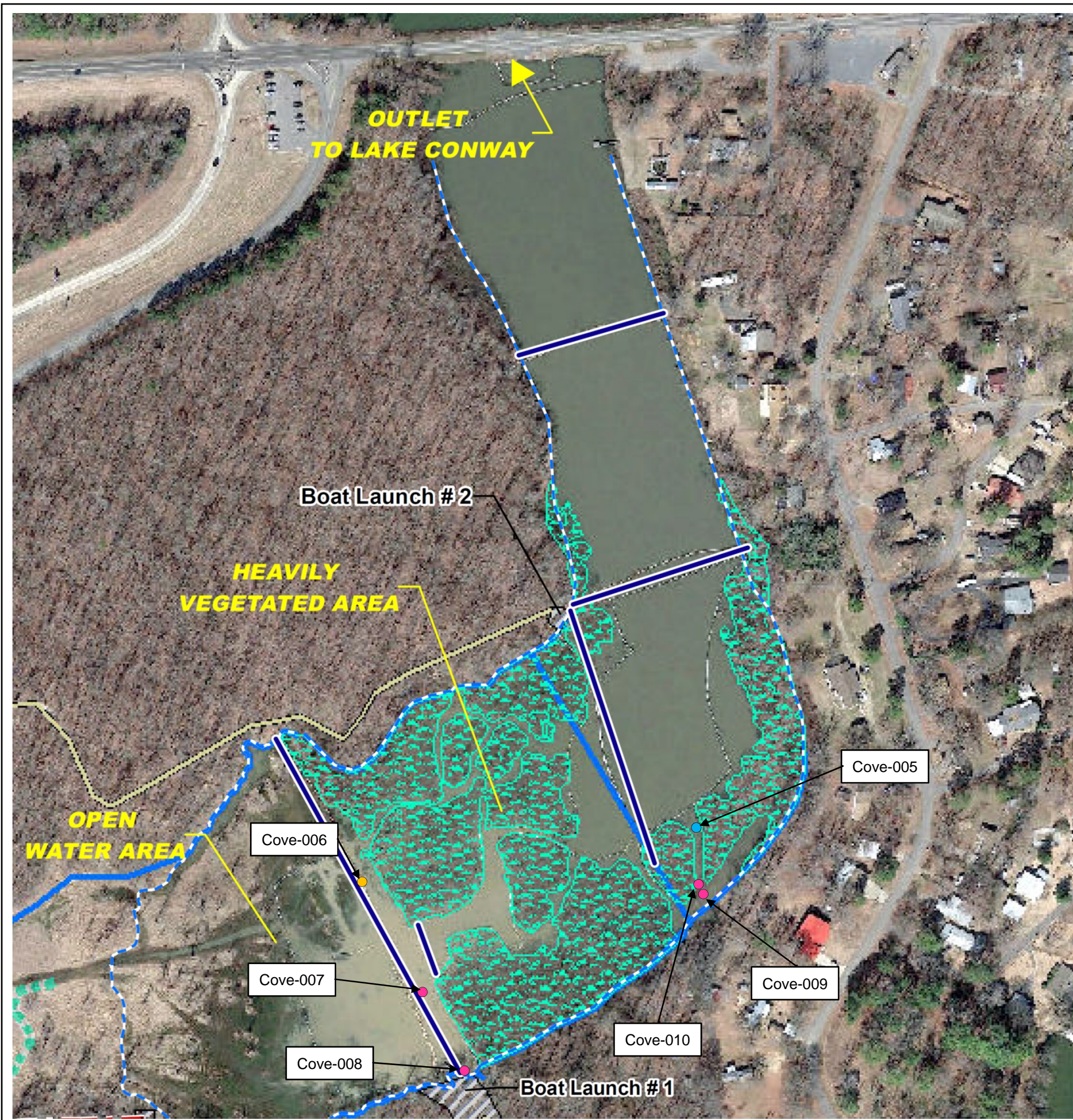




Appendix H

Sheen Sampling Results



Legend:

- Brittle Sheen
- Non-Brittle Sheen
- Non-Brittle Sheen with Oil Spot
- Temporary Containment Boom
- Drainage Path
- Existing Two-Track Road
- Areas with Heavy Vegetation (See Note 1)
- Approximate Limit of Work
- Approximate Water's Edge (See Note 2)
- Staging Area
- COVE-005 Sheen Sample ID

Notes:

- The Heavily Vegetated Area shown in this report was digitized based on the February 2014 aerial photo that was acquired via Google Enterprise Geo Master License.
- The water's edge changes based on season and recent rainfall. The approximate water's edge is based on conditions during the pre-design study in April 2014 when the water surface elevation in Lake Conway was approximately 262.92 feet (North American Vertical Datum of 1988).
- Three sheen samples were collected from the southeast bank downstream of the work area in September and October 2014 during daily sheen monitoring.
- Three sheen samples were collected from the Open Water Area on September 25, 2014, prior to the reactive cap placement.

MAYFLOWER PIPELINE INCIDENT RESPONSE EXXONMOBIL ENVIRONMENTAL SERVICES COMPANY MITIGATION ACTION COMPLETION REPORT	
SHEEN OBSERVATIONS IN COVE DURING CONSTRUCTION ACTIVITIES	
ARCADIS	FIGURE H-1

