



BENTON COUNTY REGIONAL SOLID WASTE MANAGEMENT NEEDS ASSESSMENT



March 5, 2018



BENTON COUNTY
SOLID WASTE DISTRICT
REGIONAL NEEDS ASSESSMENT

Prepared for

Benton County Solid Waste District
5702 Brookside Road
Bentonville, AR 72712

Prepared by

Hodges Engineering
15364 Twin Pines Road
Lowell, AR 72745

March 5, 2018



EXECUTIVE SUMMARY

The Benton County Solid Waste District (BCSWD) is one of 18 Regional Solid Waste Management Districts in Arkansas. The Solid Waste Districts are partners in solid waste management activities with the Arkansas Department of Environmental Quality. The BCSWD strives to promote and support a high quality of life for the citizens of Benton County by providing a comprehensive, responsive, environmentally-safe, efficient, and cost-effective solid waste management program through the operation and over-sight of an integrated solid waste management system focused on aggressive reduction, reuse and recycling programs and proper disposal of all other solid waste materials.

This Needs Assessment update is required by Arkansas Statue ACA §8-6-716 and is due every four (4) years. This assessment includes an evaluation of solid waste collection, transportation, and disposal needs of all localities within the district. There are no disposal facilities in the BCSWD, therefore all solid waste collected is transported to landfills outside of the District. The majority of BCSWD's waste stream is disposed at either Waste Management's Eco Vista Landfill near Tontitown, Arkansas, or Republic's Prairie View Landfill near Lamar, Missouri. There are four permitted transfer stations in the District (Table 11). The transportation effectiveness in the District appears to be functioning adequately.

The major municipalities within the BCSWD offer curbside solid waste collection (Table 7). All haulers are licensed through the BCSWD. The list of rural licensed haulers and the areas served is included in Table 15. Commercial solid waste collection is also provided by approved haulers within the District. Municipalities within the District provide commercial services either by franchise agreement or are open to approved hauling companies.

Many of the municipalities within the BCSWD provide curbside recycling to residents (Table 8) and there are several recycling drop off centers located in the District (Table 9). The BCSWD is planning more recycling drop-off centers to provide ease of access to residents. Long term planning includes consideration of a modernized regional material recovery facility (MRF) for processing recycling materials; the existing facilities are dated and are manual labor intensive. Processing capacity of recyclables will also become an issue as recycling volume increases over time. Efficiency in operations, volume, and quality of recyclables are key factors to a sustainable recycling program. Recycling markets vary in price for product type and quality of material; these factors can affect profitability (or loss) for operations. Some materials, for example, such as Plastics 3-7 may continue to require subsidizing. However, a full range of recycling options should be offered to the public.

There is a need for additional composting operations in the District. The City of Bentonville's Compost Organic Waste Operations, Permit number 297-SC-R1, is the only active compost permit in the BCSWD, per ADEQ Permitted Solid Waste Facility Data Search. The Bentonville Compost Facility accepts the City of Bentonville's yard waste and non-Bentonville citizens may dispose of brush and tree limbs only. The Bentonville Compost Facility does not accept outside commercial



waste haulers' material. The City of Rogers operates a wood chip operation at the James R. Welch Recycling Center. The other current alternative for composting is at the Eco Vista Landfill near Tontitown, which is in the Boston Mountain Solid Waste District.

The BCSWD operates a Used Tire Collection program for Benton County. The BCSWD reported that USA Tire Processing is also accepting tires. Effective January 1, 2018 the Used Tire Recycling and Accountability Program went into effect statewide. These changes affect everyone who purchases or sells tires. The new law was adopted by the State Legislature as Act 317 of 2017, which created numerous changes to the State law regarding management and fees of used tires. Arkansas Pollution Control and Ecology Commission (PC&E) was responsible for developing regulations to implement the new law. The PC&E Commission adopted an emergency version of the new Regulation 36 in August 2017 and expects to adopt further updates to the regulations during 2018. Customers will pay a fee based on a tire being removed from a rim at the time a new or used replacement tire is purchased from a tire retailer.

Adequacy of Funding within the BCSWD is in question. There is an on-going lawsuit between the BCSWD and the Boston Mountain Solid Waste District pertaining to past paid fees because one of the main disposal sites for the BCSWD, the Eco Vista Landfill, is located in the Boston Mountain Solid Waste District. The Districts had a standing agreement in place, which was later nullified. If the BCSWD prevails in the lawsuit, then the funding for the District is adequate. If the ruling is in favor of the Boston Mountain Solid Waste District, then the BCSWD reports that alternate funding will be necessary.

As far as recommendations for Regulatory and Statutory Changes needed for the safe and environmental Protection of the State's Natural Resources, it is noted that legislation has been passed that set up a process by which Solid Waste Districts share the assessment fee when solid waste is taken from one District to another for disposal. The Legislation also has a mechanism for dividing fees. No other recommendations are suggested with this report.

Future needs within the BCSWD include consideration of the following:

- Additional Composting Operations
- Improvement of Multifamily recycling options
- Additional Recycling collection centers, including State Parks
- Food Waste Program
- Consideration of a modernized Recycling Material Recovery Facility for the region

TABLE OF CONTENTS

1.0 DEMOGRAPHICS	1
1.1 MAP OF DISTRICT	2
1.2 CENSUS DATA	3
2.0 BCSWD BOARD.....	3
2.1 BOARD COMPOSITION.....	3
2.2 PUBLIC PARTICIPATION	5
2.3 DISTRICT STAFF	6
2.4 CONTRACTORS, CONSULTANTS, SERVICE PROVIDERS, AND VOLUNTEERS	6
2.5 SOLID WASTE AUTHORITIES	6
2.6 ADMINISTRATIVE PROCEDURES AND OTHER DOCUMENTS	7
2.7 ADMINISTRATIVE FUNDING.....	7
2.8 BCSWD BUDGET	7
2.9 PUBLIC EDUCATION AND SUPPORT	10
2.10 PROGRAMS FOR ELIMINATION OF ILLEGAL DUMPING AND OPEN BURNING	10
3.0 WASTE CATEGORIES	11
3.1 RESIDENTIAL AND COMMERCIAL WASTE ESTIMATION	11
3.2 MUNICIPAL SOLID WASTE MAKEUP	11
3.3 INDUSTRIAL WASTE GENERATION	11
4.0 WASTE COLLECTION, RECYCLING, AND DISPOSAL	11
4.1 EXISTING SOLID WASTE MANAGEMENT FACILITIES - LANDFILLS.....	13
4.2 TRANSFER STATIONS	13
4.3 ALL OTHER FACILITIES	14
4.4 AMOUNT AND TYPE OF MATERIAL HANDLED, SERVICES AREA, AND SERVICE CHARGE	16

4.5 SOLID WASTE COLLECTION SYSTEMS	16
4.6 COLLECTION SERVICE PROVIDERS	16
4.7 WASTE HAULER / TRANSPORTER INFORMATION	17
4.8 IMPORT / EXPORT STATUS	18
Attachment 1 – Returned Municipal and Commercial Survey Forms	
Attachment 2 – Returned Industrial Survey Forms	
Attachment 3 – BCSWD Service Area Map	
Attachment 4 – BCSWD Rules, Regulations, and Administrative Procedures	



1.0 DEMOGRAPHICS

The Benton County Solid Waste District (BCSWD) is one of 18 Regional Solid Waste Management Districts in Arkansas. The Solid Waste Districts are partners in solid waste management activities with the Arkansas Department of Environmental Quality.

BCSWD strives to promote and support a high quality of life for the citizens of Benton County by providing a comprehensive, responsive, environmentally-safe, efficient, and cost-effective solid waste management program through the operation and over-sight of an integrated solid waste management system focused on aggressive reduction, reuse and recycling programs and proper disposal of all other solid waste materials.

See Map of District and Facilities on next Page.



1.1 MAP OF DISTRICT



Facilities Identified on Map:

1. Benton County Solid Waste District
 - a. Recycling
 - b. Household Hazardous Waste
 - c. Waste Tire Collection
2. Republic Bella Vista Transfer Station
3. Bella Vista AARP Recycling
4. City of Bentonville Compost
5. Waste Management Rogers Transfer Station
6. Marck Recycling MRF
7. TRG Metal Recycling
8. City of Rogers (James R. Welch Recycling Facility)
9. Rogers Iron & Metal Recycling
10. eSCO Processing & Recycling
11. USA Iron & Metal
 - a. Metal Recycling
 - b. C&D Recycling
12. Waste Management Bethel Heights Transfer Station
13. City of Siloam Springs Transfer Station
 - a. Recycling
 - b. Household Hazardous Waste



1.2 CENSUS DATA

Current population data from the US Census dated July 1, 2016 shows Benton County has a population of 258,291. Comparing the population estimate from 2016 with the 2010 data (Population 221,339) indicates an increase of +/-16.7% (or +/-2.78% per year). If the population continues to increase at that rate, then by 2020 the Benton County population would be in the order of 287,000.

Table 1. 2016 US Census Data

ALL TOPICS ▼	Q Benton County, Arkansas
i Population estimates, July 1, 2016, (V2016)	258,291
PEOPLE	
Population	
i Population estimates, July 1, 2017, (V2017)	NA
i Population estimates, July 1, 2016, (V2016)	258,291
i Population estimates base, April 1, 2010, (V2017)	NA
i Population estimates base, April 1, 2010, (V2016)	221,364
i Population, percent change - April 1, 2010 (estimates base) to July 1, 2017, (V2017)	NA
i Population, percent change - April 1, 2010 (estimates base) to July 1, 2016, (V2016)	16.7%
i Population, Census, April 1, 2010	221,339

2.0 BCSWD BOARD

Regular Board meetings are held at 1:30 p.m. on the 4th Thursday of the first month of each calendar quarter (January, April, July and October). Meetings are normally held at the District's Business Office at 5702 Brookside Rd. Emergency meetings may be called on occasion if urgent, unexpected business requires the board to meet quickly.

2.1.1 BOARD COMPOSITION

Elected Officials

The Solid Waste District Board is comprised of the County Judge or his/her appointed representative and the Mayors or his/her appointed representative for each city with a certified population of over 2,000 citizens. The Benton County Solid Waste District's Board by entity and date placed on the board are:

Benton County

Vacant

City of Bella Vista

Mayor Peter Christie – Vice Chairman - elected
1/2015

**City of Bentonville**

Mr. Mike Bender - appointed
4/2015

City of Bethel Heights

Mr. Jeff Hutcheson - appointed
3/2015

City of Centerton

Mayor Bill Edwards - elected
1/2011

City of Gentry

Mayor Kevin D. Johnston - elected
1/2011

City of Gravette

Mayor Kurt Maddox - elected
1/2015

City of Little Flock

Mayor Bob Stout - elected
10/2017

City of Lowell

Mr. Jimmy Hendrix - appointed
2/2017

City of Pea Ridge

Mayor Jackie Crabtree - Chairman - elected
1/2005

City of Rogers

Mr. Jerrold Haley – Secretary - appointed
Date appointed not provided

City of Siloam Springs

Mr. Don Tennison - appointed
2/2011

Solid Waste Operator License Holders:

- Mr. Jimmy Hendrix
- Mr. Don Tennison

2.1.3 ADVISORY BOARDS

COMMITTEES OF THE BOARD

The Board Chairman will serve as an Ad Hoc member of each committee. Committees will elect a chairperson at the first scheduled committee meeting of the year. All board members are invited and encouraged to attend any committee meeting and to provide input.

EXECUTIVE COMMITTEE

Per the District's By-Laws, the Executive Committee is comprised of the officers of the Board. The Executive Committee has all of the powers and authority of the Board of Directors in the intervals between meetings of the Board of Directors. Confirmation of any Executive Committee action must be obtained by a majority vote of those members present at the next General Board meeting.

ADVISORY COMMITTEE

Duties: Advises staff and board on revisions to manuals, rules and regulations, planning, etc.

GRANT COMMITTEE

Duties: Reviews annual recycling grant pre-applications for distribution of State funding

PERSONNEL and FINANCE COMMITTEE

Duties: Reviews all financial and personnel issues

YARD WASTE COMMITTEE (established 7/25/13)

Duties: Analyze possible solutions for yard waste collection, processing and disposal.

2.1.4 BOARD MEETINGS

Regular Board meetings are held at 1:30 p.m. on the 4th Thursday of the first month of each calendar quarter (January, April, July and October). Meetings are normally held at the District's Business Office at 5702 Brookside Road. Emergency meetings may be called on occasion if urgent, unexpected business requires the board to meet quickly. The Board meeting schedule is posted on the BCSWD website.

2.2 PUBLIC PARTICIPATION

The BCSWD welcomes Public Participation. The Board meeting schedule is posted on the BCSWD website. In addition, notice of Meeting Dates, Times and Draft Agendas for all District Board and Committee meetings will be provided by email to anyone requesting such notice. The Public can also be added to the distribution list by contacting the District staff at



(479) 795-0751. Notice is provided in advance of meetings and always provided at least 2 hours prior to any emergency meeting.

Public comment is scheduled on the agenda at the start of every Board meeting. The Board also accepts comments on agenda items during the meeting.

The Certificate of Need procedure complies with Regulation 22, which includes public participation.

2.3 DISTRICT STAFF

The BCSWD is governed by the Board of Directors. Wendy Cravens serves as the Districts Director and oversees the District's staff and day to day operations. The makeup of the BCSWD's staff is shown in the table below.

Table 2. BCSWD Staff

Job Title	Status	Yrs of Svc	Certifications
Convenience Center Attendant	Full-time	1.75	None
Convenience Ctr Attendant II	Full-time	0.75	None
Director	Full-time	12.75	Class 1,2,3 Level C; SWANA Household Hazardous Waste & CESQG Collection Operations Certificaiton
HHW Manager	Full-time	11.5	Class 1,2,3 Level C; SWANA Household Hazardous Waste & CESQG Collection Operations Certificaiton
Program Coordinator	Full-time	2.5	None
Recycling Coordinator	Full-time	3	None
Recycling Drive	Full-time	0.75	None
Recycling Technician	Full-time	0.25	None
Tire Driver	Full-time	0.75	None
Tire Technician	Full-time	0.5	None
Tire Technician	Full-time	0.1	None
Transfer Station Attendant	Full-time	2.25	Class 1,2,3 Level A
Transfer Station Attendant	Full-time	1.25	Class 1,2,3 Level A

2.4 CONTRACTORS, CONSULTANTS, SERVICE PROVIDERS, AND VOLUNTEERS

The BCSWD periodically utilizes outside services such as attorneys, engineers, accountants, or other consultants or contractors to provide outside services on an as needed basis.

Contractors, Consultants, Service Providers, and Volunteers:

- Hodges Engineering, Consulting Services
- Republic Services, Solid Waste Services

2.5 SOLID WASTE AUTHORITIES

There are no Solid Waste Authorities in the BCSWD.



2.6 ADMINISTRATIVE PROCEDURES AND OTHER DOCUMENTS

The BCSWD Rules, Regulations, and Administrative Procedures, which became effective April 1, 2014, are included in Attachment 4.

2.7 ADMINISTRATIVE FUNDING

Table 3. BCSWD Funding

a.	Recycling Grants - 2017 Administration & Education grants	\$	56,836.00	
b.	Waste Tire Grants - 2017 Waste Tire Funds for Admin Sal & Expenses	\$	21,574.14	
c.	Other grants (identify Source)	\$	-	
	ADEQ Recycling Grants-Program Operations	\$	28,300.00	
	ADEQ E-Waste Grants-Program Operations	\$	51,905.28	
	ADEQ Tire Management Grants (Non-administrative)	\$	144,241.61	
d.	Total administrative funds from Grants	\$	302,857.03	
Next, list all administrative fees levied and collected by the District.				
Source		2017 Annual Dollar Amount		% of total
ADEQ GRANTS (from d above)		\$	302,857.03	29%
Local Sources:		\$	-	
	Hauler Licensing	\$	11,163.45	
	Taxes	\$	-	
	Per Capita Fee	\$	111,063.64	
	Assessment/Tipping	\$	284,991.06	
	Collection Fee	\$	43,572.69	
	Other*	\$	-	
	Miscellaneous income	\$	1,585.32	
	Reimbursements from Benton County	\$	45,533.05	
	Sale of Recyclable Commodities	\$	117,715.44	
	Sale of Surplus Equipment	\$	47,040.86	
	Tire Disposal Fees	\$	45,059.86	
	Trailer Rental Fees	\$	28,870.00	
Total Local Revenue		\$	736,595.37	71%
Total Annual Funds		\$	1,039,452.40	100%

2.8 BCSWD BUDGET

The BCSWD Board approves all budgets by resolution.

Table 4. BCSWD Budget

CAPITAL EXPENDITURES		
Account		Final Budget
Capital Improvements		\$ 8,362.38
Debt Service		\$ -
	Lawsuit Settlement	\$ 36,000.00
Equipment (Fixed Asset)		\$ -
TOTAL CAPITAL EXPENDITURES		\$ 44,362.38



Benton County Solid Waste District Regional Needs Assessment 2018

PERSONNEL EXPENSES		
Account		Final Budget
Employee Licenses		\$ 794.95
Employer Taxes & Contributions		\$ 114,975.72
Salaries		\$ 366,353.81
Workers Comp		\$ 5,972.98
TOTAL PAYROLL EXPENSES		\$ 488,097.46

OPERATING AND MAINTENANCE EXPENSES		
Account		Final Budget
Advertising		\$ 82.16
Automobile Expense		\$ 27.78
Bad Debt		\$ 1,050.50
Bank Charges		\$ (2.56)
Board Expenses		\$ 10.00
Contract Service		\$ 793.91
Dues/Memberships/Subscriptions		\$ 918.39
Fuel, Oil & Lubricants		\$ 13,788.34
HHW Program		\$ 38,132.04
Insurance		\$ 13,977.00
Meals for Inmate Crew		\$ 2,553.61
Office Supplies		\$ 2,188.24
Permits		\$ 50.00
Postage		\$ 289.76
Printing/Reproduction		\$ -
Professional Services		\$ 35,055.70
Refunds		\$ -
Rental		\$ 7,844.71
Repairs/Maintenance		\$ 35,444.73
Small Equipment		\$ 8,232.35
Supplies		\$ 3,022.51
Taxes		\$ 2,330.57
Tires		\$ 5,586.54
Toll Fees		\$ 229.50
Training/Travel		\$ 6,780.49
Uniforms/PPE		\$ 1,084.83
Utilities		\$ 19,397.69
Waste Disposal		\$ 53,493.11
TOTAL O & M EXPENSES		\$ 252,361.90

Total Operating Expenses: \$784,821.74



Table 5. Tire Expenses

ADMINISTRATIVE EXPENSES

Account		Final Budget
Advertising		\$ -
Licenses & Permits		\$ 165.00
Office Equipment		\$ -
Office Supplies		\$ 294.71
Office Utilities: Telephones		\$ 928.67
Postage		\$ 226.00
Professional Services		\$ -
	Accounting	\$ 1,000.00
	Attorney	\$ -
TOTAL ADMINISTRATIVE EXPENSES		\$ 2,614.38

CAPITAL EXPENSES

Account		Final Budget
Debt Service		\$ -
	General Fund Loan	\$ 10,000.00
	WRV Reimb	\$ 34,062.65
Equipment		\$ -
	Trailers	\$ -
TOTAL CAPITAL EXPENSES		\$ 44,062.65

**OPERATING AND MAINTENANCE
EXPENSES**

Account		Final Budget
Abatement		\$ -
Auto Expense		\$ 37.17
Bank Charges		\$ 22.09
Fuel, Oil & Lubricants		\$ 20,130.60
Insurance		\$ 1,997.00
Printing/Reproduction		\$ 425.34
Rental Expense		\$ 17,925.66
Repairs/Maintenance		\$ 22,049.17
Small Equipment		\$ 1,419.57
Supplies		\$ 460.41
Taxes		\$ 8.00



Tipping Fees		\$ 84,342.20
Tires		\$ 9,690.27
Toll Fees		\$ 2,676.83
Training/Travel		\$ 31.11
Uniforms		\$ 403.46
Utilities		\$ -
	Utilities: Electric	\$ -
	Utilities: Water	\$ -
Waste Disposal		\$ -
TOTAL O & M EXPENSES		\$ 161,618.88

PERSONNEL EXPENSES

Account		Final Budget
Employee Licenses		\$ 105.00
Employer Taxes and Contributions		\$ 12,129.67
Salaries		\$ 84,272.73
Workers Comp		\$ 3,309.65
TOTAL PAYROLL EXPENSES		\$ 99,817.05

Total Tire Expenses: \$308,112.96

2.9 PUBLIC EDUCATION AND SUPPORT

There are currently no public education and support services provided by the BCSWD due to funding.

2.10 PROGRAMS FOR ELIMINATION OF ILLEGAL DUMPING AND OPEN BURNING

The BCSWD and Benton County Environmental Services are in cooperation to assist each other to eliminate illegal dumping and open burning. The County provides full time staff and enforcement officers to receive and act on complaints. If a violation exists, the enforcement officer attempts to rectify the situation with the responsible party. If a violation exists and suitable corrective action is not completed, then a citation may be issued and remedy under state and county law may be pursued.

3.0 WASTE CATEGORIES

3.1 RESIDENTIAL AND COMMERCIAL WASTE ESTIMATION

Residential and Commercial Waste Estimation utilizing per capita generation rate and 2016 Census Data.

Table 6. Waste Stream Composition by Material Estimate

BCSWD Waste Stream Composition by Material

Benton County Population:	258,291
Estimated Waste Generated per Person on a daily basis:	4.43 lbs.
Estimated Total Waste Generated per Year in the BCSWD:	208,822 Tons

<u>Waste Type</u>	<u>% of Waste Stream</u>	<u>Estimated Tonnage</u>
Paper & Paperboard	28.5%	59,514
Food Scraps	13.9%	29,026
Yard Trimmings	13.4%	27,982
Plastics	12.4%	25,894
Metals	9.0%	18,794
Rubber & Textiles	8.4%	17,541
Wood	6.4%	13,365
Glass	4.6%	9,606
Other	3.4%	7,100

3.2 MUNICIPAL SOLID WASTE MAKEUP

The Municipal survey forms were distributed to all haulers within the BCSWD. The returned forms are included in Attachment 1.

3.3 INDUSTRIAL WASTE GENERATION

The Industrial survey forms were distributed to industrial generators within the BCSWD. The returned forms are included in Attachment 2.

4.0 WASTE COLLECTION, RECYCLING, AND DISPOSAL

Solid Waste Collection: The major municipalities within the BCSWD offer curbside solid waste collection. Rural providers for solid waste pickup are licensed through the BCSWD. The list of rural licensed haulers and the areas served is included in Table 12. Commercial solid waste collection is also provided by approved haulers within the District. Municipalities within the District provide commercial services either by franchise agreement or are open to approved hauling companies.

Table 7. *Municipalities with Curbside Solid Waste Collection*

Municipality	
Avoca	Gravette
Bella Vista	Highfill
Bentonville	Little Flock
Bethel Heights	Lowell
Cave Sprigs	Rogers
Centerton	Siloam Springs
Decatur	Springdale
Garfield	Springtown
Gentry	Sulphur Springs

Recycling: Many of the municipalities within the BCSWD provide curbside recycling to residents and there are several recycling drop off centers located in the District.

Table 8. *Municipalities with Curbside Recycling*

Municipality	
Avoca	Siloam Springs
Bentonville	Springdale
Bethel Heights	
Cave Sprigs	
Centerton	
Garfield	
Lowell	
Rogers	

Table 9. *Recycling Drop Off Centers*

Staffed Centers	Rural Drop-off Sites
Bella Vista Recycling Center	Cave Springs
Benton County Recycling Center (Centerton)	Decatur
Bentonville Composting and Recycling Facility	Garfield
Rogers James R. Welch Recycling Center	Gravette
Siloam Springs Recycling and Transfer Station	Pea Ridge

Additional Recycling Resources:

Electronics: eSCO Processing and Recycling, LLC is located at 2111 S. 8th Street in Rogers and provides customized programs for e-waste streams and promotes a zero electronic waste landfill policy. They achieve this by disassembling or refurbishing all e-waste that enters their facility where disassembling or demanufacturing reduces the materials to the most finite of commodities to eliminate the production of waste. Refurbishment takes working equipment or equipment that needs minor repairs and reintroduces them to marketplace as functional equipment.

Material Recovery Facility: Marck Recycling operates a Material Recovery Facility at 3507 N. Arkansas Street in Rogers. They collect and process a full spectrum of recycling material including single stream residential and commercial material. They also can provide waste audits and assist in implementing recycling programs to the private and public sectors.

Metal Recycling Facilities: There are three metal recycling facilities in the District, refer to the Table below for business name and location.

Table 10. Metal Recycling Facilities

Name	Location
Rogers Iron & Metal	721 N. Arkansas Street Rogers, AR
Tennebaum Recycling Group (TRG)	3459 N. Arkansas Street Rogers, AR
USA Iron & Metal	721 S. Lincoln Street Lowell, AR

4.1 EXISTING SOLID WASTE MANAGEMENT FACILITIES - LANDFILLS

There are no landfills within the BCSWD.

4.2 TRANSFER STATIONS

Solid Waste Transfer and Disposal: The majority of waste generated in the BCSWD is either directly hauled or transferred to the Waste Management's Eco Vista Landfill near Tontitown, Arkansas or transferred to Republic's Prairie View Landfill near Lamar, Missouri. There are four permitted transfer stations in the District. The transportation effectiveness for solid waste appears to be functioning adequately.



Table 11. Permitted Transfer Stations

Permit Number	Permitted Facility Name & Location
0025-STSW-B	Waste Management of AR, Inc. / Rogers 3507 N. Arkansas Street Rogers, AR 72162 (Operated by the BCSWD)
0051-STSW	American Disposal / Bella Vista 36 Bella Vista Way Bella Vista, AR 72714 (Republic)
0101-STSW-R1	Deffenbaugh of Arkansas, LLC 4848 Highway 264 E Bethel Heights, AR 72745 (Operated by Inland)
0102-STSW	City of Siloam Springs 1108 E. Ashley Siloam Springs, AR 72761

4.3 ALL OTHER FACILITIES

Yard Waste / Composting / Wood Chip Operations: The City of Bentonville operates a composting facility at 2000 N.W. A Street in Bentonville. The Bentonville Compost Facility accepts the City of Bentonville yard waste and non-Bentonville citizens may dispose of brush and tree limbs only. The Bentonville Compost Facility does not accept commercial waste haulers material.

The City of Rogers operates a wood chip operation at the James R. Welch Recycling Center located at 2300 N. Arkansas Street. Rogers residents can also drop off yard waste at the Rogers Street Department located at 3101 W. Oak Street or purchase yard waste bags from Inland Waste Solutions for \$2.00 per bag. The yard waste bags will be picked up curbside in the City of Rogers on routine resident recycling pickup days.

The municipalities that offer curbside yard waste collection within the District are listed below.

Table 12. Municipalities with Curbside Yard Waste Collection

Municipality	
Bella Vista	Gentry
Bentonville	Lowell
Bethel Heights	Rogers
Cave Springs	Siloam Springs
Centerton	Springdale

There is a need for additional composting operations in the District. The City of Bentonville's Compost Organic Waste Operations, Permit number 297-SC-R1 is the only active compost permit in the BCSWD per ADEQ Permitted Solid Waste Facility Data Search.



Waste Tires: The Solid Waste District operates the Used Tire Collection program for Benton County. In addition, the BCSWD reports that USA Tire has a Processing facility. It should be noted that effective January 1, 2018 the Used Tire Recycling and Accountability Program went into effect statewide. These changes will affect everyone who purchases or sells tires. The new law was adopted by the State Legislature as Act 317 of 2017, which created numerous changes to the State law regarding management and fees of used tires. The Arkansas Pollution Control and Ecology Commission (PC&E) was responsible for developing regulations to implement the new law. PC&E Commission adopted an emergency version of the new [Regulation 36](#) in August 2017 and expects to adopt further updates to the regulations during 2018. Customers will pay a fee based on a tire being removed from a rim at the time a new or used replacement tire is purchased from a tire retailer.

Prescription Drug Drop-Off: Local law enforcement agencies have established year-round collection sites for prescription medications. These items are collected anonymously from the public at no charge. These agencies collect and destroy these unwanted drugs.

Table 13. Prescription Drug Drop-Off / Arkansas Take Back Program Locations

Name	Location
Lowell Police Department	214 North Lincoln Street Lowell, AR
Springdale Police Department	201 Spring Street Springdale, AR
Rogers Police Department	1905 S. Dixieland Rogers, AR
Little Flock Police Department	1500 Little Flock Drive Rogers, AR
Centerton Police Department	220 Municipal Drive Centerton, AR
Pea Ridge Police Department	187 Slack Street Pea Ridge, AR
Bella Vista Police Department	105 Town Center Bella Vista, AR
Gentry Police Department	100 East Main Gentry, AR

Household Hazardous Waste: Only specified materials and volumes generated by Benton County residences will be accepted. Excess volumes will not be accepted at Satellite locations but will be accepted at the Centerton location for a fee. Non-household material WILL NOT be accepted, as it is required by law to be handled by a commercial hazardous waste company. See Table 6 for convenient center information and acceptable items.

Construction & Demolition (C&D) Recycling: The BCSWD reported that E3 Services has a permitted C&D Material Recovery Facility (MRF), which was burned. E3 is currently operating the C&D MRF at USA Metal's Recycling C&D facility at 721 S. Lincoln in Lowell, but under E3's permit.



4.4 AMOUNT AND TYPE OF MATERIAL HANDLED, SERVICE AREA, AND SERVICE CHARGE

See Attachments 1 & 2 for completed Annual Reporting Survey Forms.

4.5 SOLID WASTE COLLECTION SYSTEMS

Table 14. Municipalities with Curbside Solid Waste Collection & last reported Monthly Rates

Municipality			
Avoca	\$14.91	Gravette	\$9.96
Bella Vista	\$14.30	Highfill	\$11.44
Bentonville	\$13.48	Lowell	\$9.61
Bethel Heights	\$12.15	Rogers	\$14.05
Cave Springs	\$14.15	Siloam Springs	\$20.35 (\$16.17 – 64 gal.)
Centerton	\$12.74	Springdale	\$15.24
Decatur	\$11.36	Springtown	\$9.45
Garfield	\$18.14	Sulphur Springs	\$14.28
Gentry	\$11.43		

4.6 COLLECTION SERVICE PROVIDERS

Waste Management, Republic Services, and Inland Waste Solutions provide municipal collection in the BCSWD. The City of Siloam Springs provides its own waste collection services. Rural areas are services by licensed independent haulers.



4.7 WASTE HAULER / TRANSPORTER INFORMATION

Current Licensed Waste Haulers and service areas in the BCSWD are provided below. A larger service area map is provided in Attachment 3.

Table 15. Licensed Waste Haulers and Service Areas

BENTON COUNTY SOLID WASTE DISPOSAL OPTIONS

2/5/2018

2018 ROLL OFF CONTAINER & DUMPSTER PROVIDERS

PROVIDER	ZONES	TYPE OF CONTAINER AVAILABLE*	PHONE
E3	ALL ZONES	Both	(479) 544-6800
Inland Waste Solutions, LLC	ALL ZONES	Both	(479) 878-1384
MSG Waste	ALL ZONES	Both	(479) 996-6899
Carroll County Solid Waste Authority	H	Both	(479) 253-2727
City of Siloam Springs	Siloam ONLY	Both	(479) 524-8512
The Trash Mann	A-I	Dumpsters Only	(479) 721-1708
Phillips Trash	I, J	Dumpsters Only	(479) 789-5690
Collins Construction Co.	ALL ZONES	Roll Off Containers Only	(918) 542-6657
Hogbox	ALL ZONES	Roll Off Containers Only	(479) 445-6611
Marck Recycling & Waste of NWA	ALL ZONES	Roll Off Containers Only	(479) 282-1090
Republic Services of Bella Vista	ALL ZONES	Roll Off Containers Only	(479) 855-4226
Waste Away	ALL ZONES	Roll Off Containers Only	(479) 282-7126
Waste Management	ALL ZONES	Roll Off Containers Only	(479) 361-4220
Courtesy Services	B-D, F	Roll Off Containers Only	(479) 846-3607
Roll Off Dumpsters	C-J	Roll Off Containers Only	(479) 751-4499

SPECIAL HAULS, CLEANUPS, LARGE ITEM PICKUPS, ETC.

PROVIDER	ZONES	TYPE OF SERVICE	PHONE
Solid Waste District	All Zones	Furniture & appliances w/fee	(479) 795-0751
City Of Siloam Springs	City limits	Possible large item pickup; ask city	(479) 524-8512
Inland Waste Solutions, LLC.	City limits	Possible large item pickup; ask city	(479) 878-1384
Republic Services of Bella Vista	City limits	Possible large item pickup; ask city	(479) 855-4226
Waste Management, Inc.	City limits	Possible large item pickup; ask city	(479) 361-4200
Phillips Trash Service	I, J	Special hauls, cleanups, etc.	(479) 789-5690
The Trash Mann	A-I	Special hauls, cleanups, etc.	(479) 721-1708

CITY DIPSOAL CONTRACTS

Republic Services		Waste Management	
Bella Vista	479-855-4226	Avoca	479-361-4200
Bentonville	479-855-4226	Cave Springs	479-361-4200
Gentry	479-855-4226	Centerton	479-361-4200
Gravette	479-855-4226	Decatur	479-361-4200
Highfill	479-855-4226	Garfield	479-361-4200
Springtown	479-855-4226	Lowell	479-361-4200
Inland Services		Springdale	479-361-4200
Bethel Heights	479-878-1384	City of Siloam Springs	
Elm Springs	479-878-1384	Siloam Springs	479-524-8512
Little Flock	479-878-1384	The Trash Man	
Rogers	479-878-1384	Sulphur Springs	479-721-1708

Gateway - OPEN MARKET - Carroll County, Waste Management, Republic Services, The Trash Man

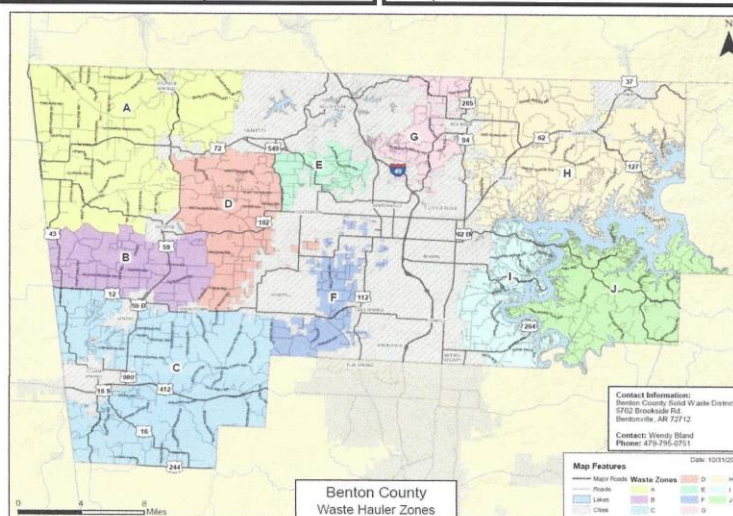
Pea Ride - OPEN MARKET - Waste Management, Republic Services, Trash Mann

LARGE ITEM PICKUP: Please call your waste hauler first. If not available, the District can schedule for a fee at (479) 795-0751.



RESIDENTIAL 2018 LICENSED WASTE HAULER

Zone A		Zone E	
R & S Trash Service	479-824-3203	Republic Services	479-855-4226
Republic Services	479-855-4226	The Trash Mann	479-721-1708
Bernice Sanitation	918-256-7085	Waste Management	479-361-4200
The Trash Mann	479-721-1708		
Zone B		Zone F	
Courtesy Services	479-846-3607	Courtesy Services	479-846-3607
Martinez Trash Service	479-848-1295	Martinez Trash Service	479-848-1295
R & S Trash Service	479-824-3203	Republic Services	479-855-4226
The Trash Mann	479-721-1708	The Trash Mann	479-721-1708
Waste Management	479-361-4200	Waste Management	479-361-4200
Triple T Lawn & Trash Service	479-790-6002		
Republic Services	479-855-4226	Zone G	
Zone C		Martinez Trash Service	479-848-1295
Murrays Trash Service	479-878-3701	Republic Services	479-855-4226
Courtesy Services	479-846-3607	Dennis' Rural Trash Service	417-341-8602
Martinez Trash Service	479-848-1295	The Trash Mann	479-721-1708
The Trash Mann	479-721-1708	Waste Management	479-361-4200
Triple T Lawn & Trash Service	479-790-6002		
Waste Management	479-361-4200	Zone H	
Republic Services	479-855-4226	Carroll County Solid Waste	479-253-2727
Northwest Sanitation LLC	479-846-3390	Republic Services	479-855-4226
Zone D		The Trash Mann	479-721-1708
Courtesy Services	479-846-3607	Waste Management	479-361-4200
Martinez Trash Service	479-848-1295		
Republic Services	479-855-4226	Zone I	
The Trash Mann	479-721-1708	Martinez Trash Service	479-848-1295
Bernice Sanitation	918-256-7085	Phillips Trash Service	479-789-5690
Waste Management	479-321-4200	The Trash Mann	479-721-1708
		Waste Management	479-361-4200
		Zone J	
		DNA Trash Service	479-530-5426
		Rick's Disposal Service	479-790-2176
		Phillips Trash Service	479-789-5690



4.8 IMPORT / EXPORT STATUS

All Solid Waste generated within the BCSWD is exported to disposal sites outside of the District.



Attachment 1

Municipal Survey Forms

Non-hazardous Waste Hauler Survey Form

Name of Hauler:	E3 LLC	Contact Person:	Ed Mount
Business Address:	721 S Lincoln St Lowell, AR 72745	Registered with District:	Yes
Phone Number:	479-544-6800	Effective Date of District License:	April 1, 2016

The report period requested is for materials received January 1 to December 31, 2017

Type of Customer	# of Accounts	Annual volume in Tons	# of licensed trucks	# of Routes	Type of Material	Disposal Facility Used
Residential	0	0	0	0		
Commercial	6	120	15	0	OCC	E3 LLC
Medical Waste	0	0	0	0		
C & D Material	260	15638.4	15	0	All types	E3 LLC
Recycling	41	3205.35	15	0	Metal, OCC, Plastic	E3 LLC
Industrial	9	1020	15		Metal	E3 LLC
Other						
Totals	316	19983.75	15	0		

Non-hazardous Waste Hauler Survey Form

Name of Hauler:	Inland Waste Solutions	Contact Person:	Kevin Gardner
Business Address:	848 Hwy 264 East	Registered with District:	Yes
Phone Number:	479-878-1384	Effective Date of District License:	1-Jan-18

The report period requested is for materials received January 1 to December 31, 2017

Type of Customer	# of Accounts	Annual volume in Tons	# of licensed trucks	# of Routes	Type of Material	Disposal Facility Used
Residential	24145	22928	Fleet	50/week	MSW	WM ECO-VISTA CLASS I
Residential co-mingle	24145	3286	Fleet	14/week	Co-Mingle Recycle	Marck Industries
Commercial	1207	18974	Fleet	44/week	MSW	WM ECO-VISTA CLASS 1
Commercial Recycle	392	727	Fleet	1/week	OCC	Marck Industries
Commercial Recycle		635			OCC	Smurfit
Medical Waste	N/A	N/A	N/A	N/A	N/A	N/A
C & D Material	55	768	2	1	C&D	ECO-VISTA CLASS IV
Recycling						
Industrial	0	0	0	0	0	
Other	7200	73	FLEET	6	YARD (GREEN) WASTE	WM ECO-VISTA COMPOST
Totals	57089	47391				



Benton County Solid Waste District Regional Needs Assessment 2018

Non-hazardous Waste Hauler Survey Form

Name of Hauler: Marck Recycling & Waste of NW Arkansas, LLC

Contact Person: Stephanie Sellers

Business Address: 703 S Bloomington St, Lowell AR 72745

Registered with District: Yes or No

Phone Number: 479-282-1090

Effective Date of District License:

The report period requested is for materials received January 1 to December 31, 2017

Type of Customer	# of Accounts	Annual volume in Tons	# of licensed trucks	# of Routes	Type of Material	Disposal Facility Used
Residential			0			
Commercial	237	6290	4	4	Class 1	Eco Vista Landfill
Medical Waste			0			
C & D Material	140	3695	4	4	Class 4	Eco Vista Landfill
Recycling	80	1693	4	4	Recycling	MARCK - Rogers or Johnsc
Industrial						
Other						
Totals	457	9554	4	4		

MARTINEZ TRASH SERVICE

Non-hazardous Waste Hauler Survey Form

Name of Hauler: Sandrs Murray

Contact Person: sandra murray

Business Address: 15718 greasy valley rd prairie grove ar 72753

Registered with District: yes

Phone Number: 479-848-1295

Effective Date of District License: Jan 1st 2018

The report period requested is for materials received January 1 to December 31, 2017

Type of Customer	# of Accounts	Annual volume in Tons	# of licensed trucks	# of Routes	Type of Material	Disposal Facility Used
Residential	163					
Commercial	0					
Medical Waste	0					
C & D Material	0					
Recycling	0					
Industrial	0					
Other						
Totals	163					



Benton County Solid Waste District Regional Needs Assessment 2018

Non-hazardous Waste Hauler Survey Form

Name of Hauler: DNA Trash Service

Contact Person:

Don Stockwell

Business Address: PO Box 1413

Registered with District: Yes

Lowell, AR 72745

Phone Number: 479-530-5426

Effective Date of District License: 04/01/08

The report period requested is for materials received January 1 to December 31, 2017

Type of Customer	# of Accounts	Annual volume in Tons	# of licensed trucks	# of Routes	amm	
Residential	102	90.09	1	2	Household goods	Siloam Springs Transfer
						Transfer Station
Commercial						
Medical Waste						
C & D Material						
Recycling						
Industrial						
Other						
Totals	102	90.09	1	2		



Attachment 2

Industrial Survey Forms

Please return survey prior to 2/16/18 via fax at (479) 795-0752 or email wendy@bentoncountyrecycles.org

Non-Hazardous Industrial Solid Waste Survey

Business SIC Code *2016*

Number of Employees *4,000 in Benton County*

The report period requested is for materials received January 1 to December 31, 2017

Type or Industrial Waste	Annual Est. Volume in Tons	Material Disposition Landfill, Recycled, etc.	In-State Disposal Location	Out of State Disposal Location	Hauler of Material
MSW	<i>3,015</i>	<i>Landfill</i>			<i>Waste Management</i>
Liquid Waste					
Sludge Waste					
Medical Waste					
Other					

What is the approximate annual cost of current waste transportation and disposal at your facility? *\$275,000*

If any, please explain any predicted changes in types or quantities of industrial non-hazardous waste in the foreseeable future?

Move more to recycling

Does your industry have a waste diversion or sustainability plan?

Unknown

If yes, please explain, include a copy, or provide access, if possible.

Do you have any suggestions for State Regulations that you see as beneficial if implemented or changed in the future?



Benton County Solid Waste District Regional Needs Assessment 2018

Please return survey prior to 2/16/18 via fax at (479) 795-0752 or email wendy@bentoncountyclecyles.org

Non-Hazardous Industrial Solid Waste Survey

Business SIC Code 326111

Number of Employees 212

The report period requested is for materials received January 1 to December 31, 2017

Type or Industrial Waste	Annual Est. Volume in Tons	Material Disposition Landfill, Recycled, etc.	In-State Disposal Location	Out of State Disposal Location	Hauler of Material
MSW	N/A				
Liquid Waste	N/A				
Sludge Waste	N/A				
Medical Waste	N/A				
Other	N/A 815	LANDFILL	WASTE MGT.		WASTE MGT

What is the approximate annual cost of current waste transportation and disposal at your facility? \$97K

If any, please explain any predicted changes in types or quantities of industrial non-hazardous waste in the foreseeable future?

Does your industry have a waste diversion or sustainability plan? YES

If yes, please explain, include a copy, or provide access, if possible. ZERO LANDFILL - COMPOST

Do you have any suggestions for State Regulations that you see as beneficial if implemented or changed in the future?

Please return survey prior to 2/16/18 via fax at (479) 795-0752 or email wendy@bentoncountyclecyles.org

Non-Hazardous Industrial Solid Waste Survey

Business SIC Code 3082

Number of Employees 665

The report period requested is for materials received January 1 to December 31, 2017

Type or Industrial Waste	Annual Est. Volume in Tons	Material Disposition Landfill, Recycled, etc.	In-State Disposal Location	Out of State Disposal Location	Hauler of Material
MSW					
Liquid Waste	79 tons	Recycled		Arkansas	Heritage - Crystal Clean
Sludge Waste	13 tons	Landfill	Arkansas		Rinaco
Medical Waste	25 lbs	Landfill		Arkansas	Stericycle
Other					
Light Bulbs	771 Lbs	Recycled		Louisiana	Rinaco
Batteries	90 Lbs	Recycled		Louisiana	Rinaco
Towels (paper)	557 lbs	Recycled	Arkansas		Rinaco

What is the approximate annual cost of current waste transportation and disposal at your facility? \$22,746.47

If any, please explain any predicted changes in types or quantities of industrial non-hazardous waste in the foreseeable future? None

Does your industry have a waste diversion or sustainability plan? Yes

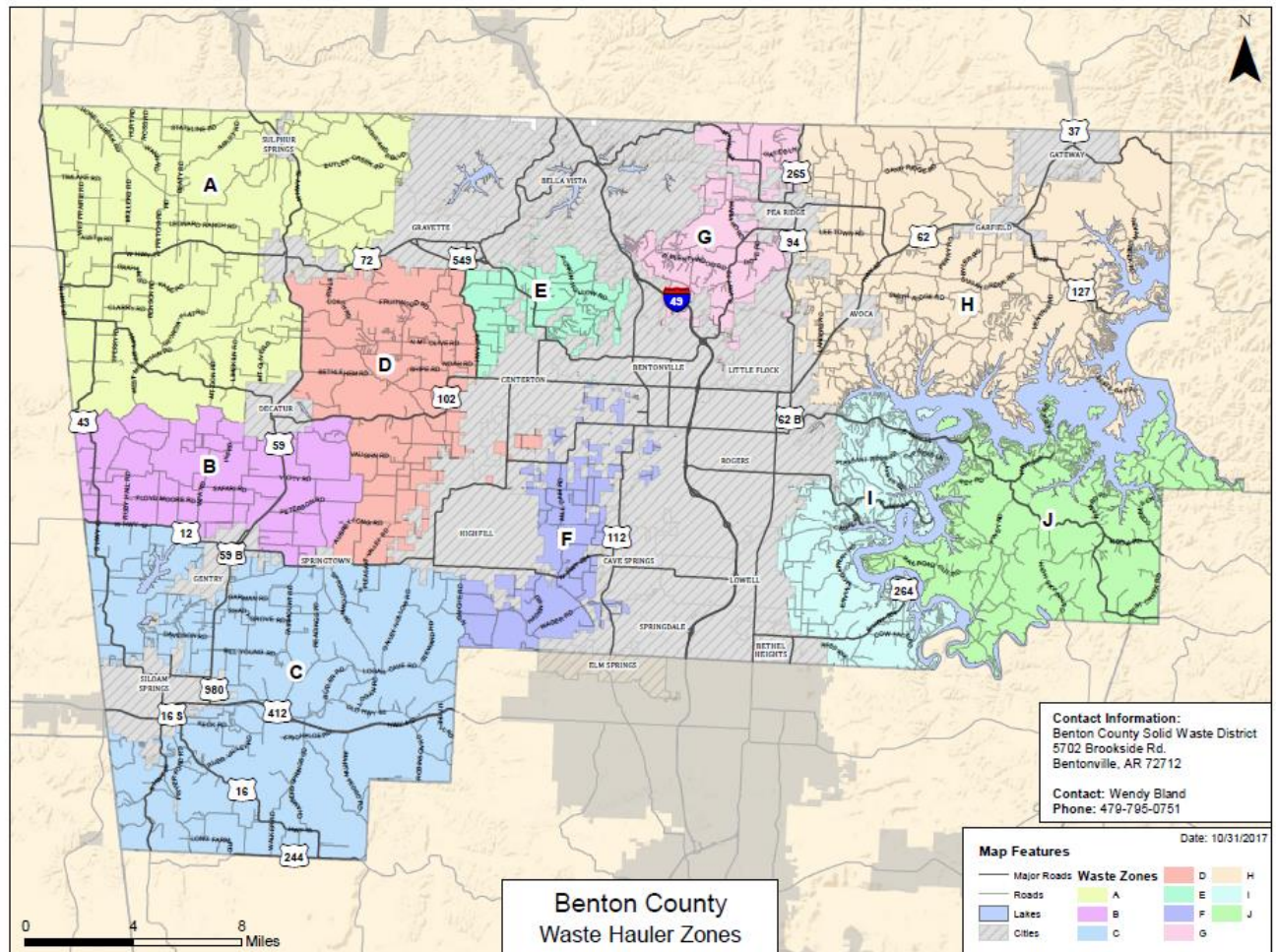
If yes, please explain, include a copy, or provide access, if possible. Standard re-use recycling plan (Cardboard, Metal, Plastic, cans)

Do you have any suggestions for State Regulations that you see as beneficial if implemented or changed in the future? No



Attachment 3

Benton County Solid Waste District Service Zone Map





Attachment 4

Benton County Solid Waste District Rules, Regulations, and Administrative Procedures