

Update from ADEQ

Office of Water Quality

**Arkansas Natural Resource Commission
Annual Nonpoint Source Stakeholder Conference
Little Rock, AR
September 21, 2016**



Tate Wentz
Aquatic Ecologist Coordinator-Research and Field Programs
Office of Water Quality
Arkansas Department of Environmental Quality
North Little Rock, AR 72118

Water Quality Standards

Nutrients

Minerals

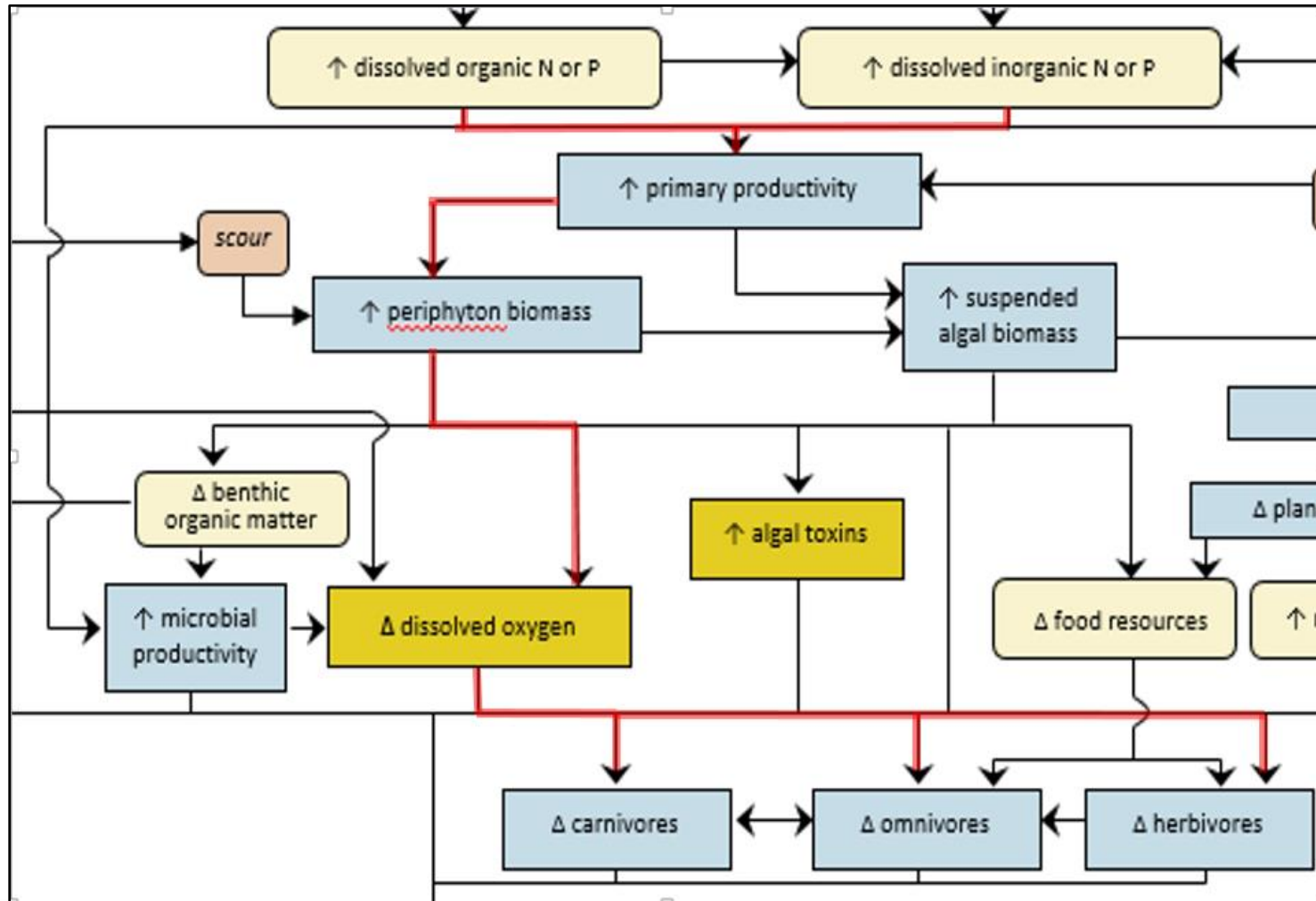
Ambient Biological Network

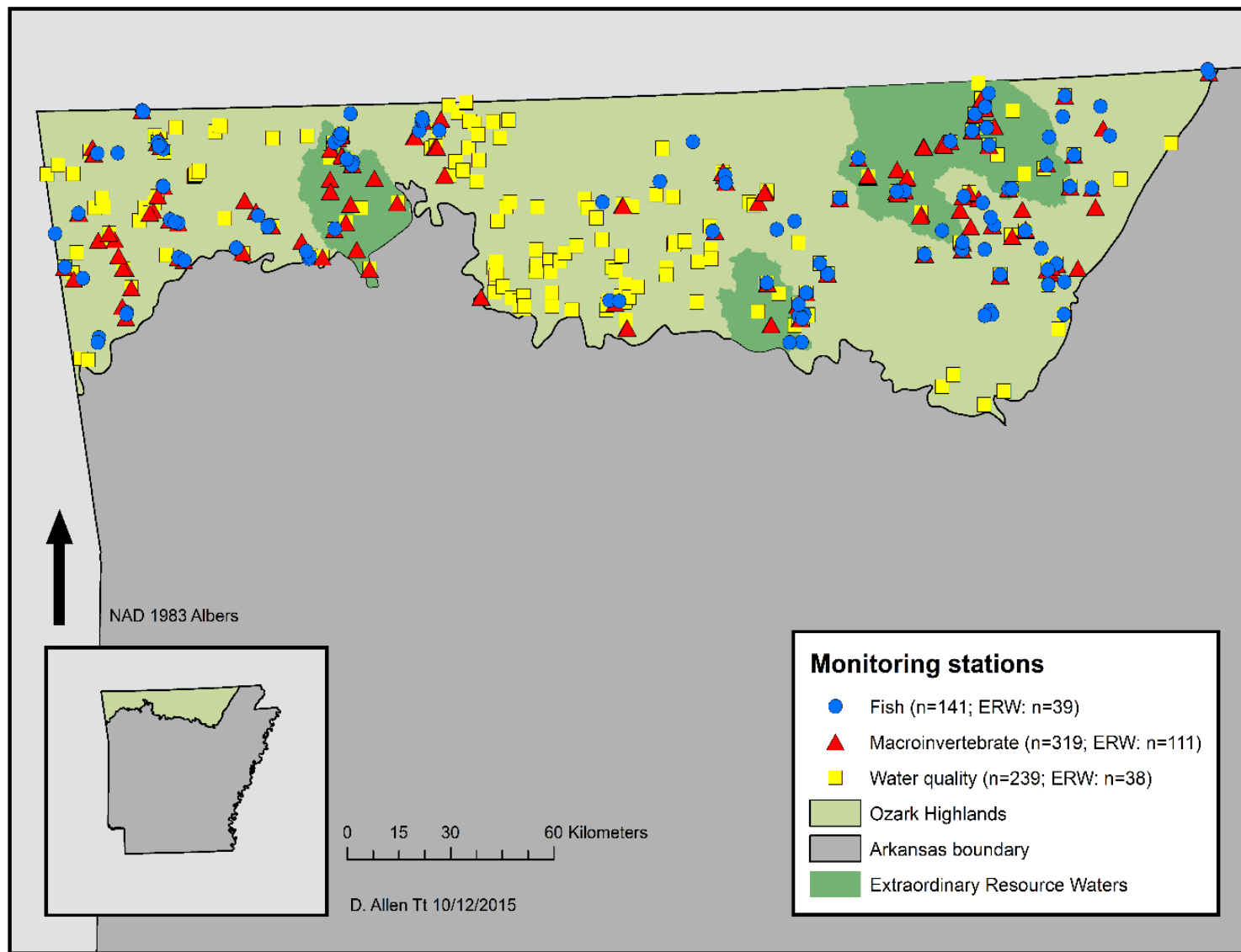


ADEQ
ARKANSAS
Department of Environmental Quality

"To protect, enhance, and restore the natural environment for the well-being of all Arkansans."

Ozark ERW NSTEPs





Ozark Highland ERW

- Nutrients in the Ozark Highlands ERWs are generally low;
- The streams appear to be relatively N limited; or at least periphyton response is convincingly stronger to TN and NO_x than TP or orthophosphate;
- Elevated periphyton does correlate with declines in some macroinvertebrate responses;
- Given these observations, an existing condition approach for the ERW region should be considered, whereby numeric targets are set that protect the existing condition.



"To protect, enhance, and restore the natural environment for the well-being of all Arkansans."

Ozark Highland ERW

- Finalize proposed criteria with frequency and duration components
- Revise and Finalize Nutrient Assessment Methodology
- Initiate public participation and stakeholder workgroup
- Adoption into Triennial Review



"To protect, enhance, and restore the natural environment for the well-being of all Arkansans."

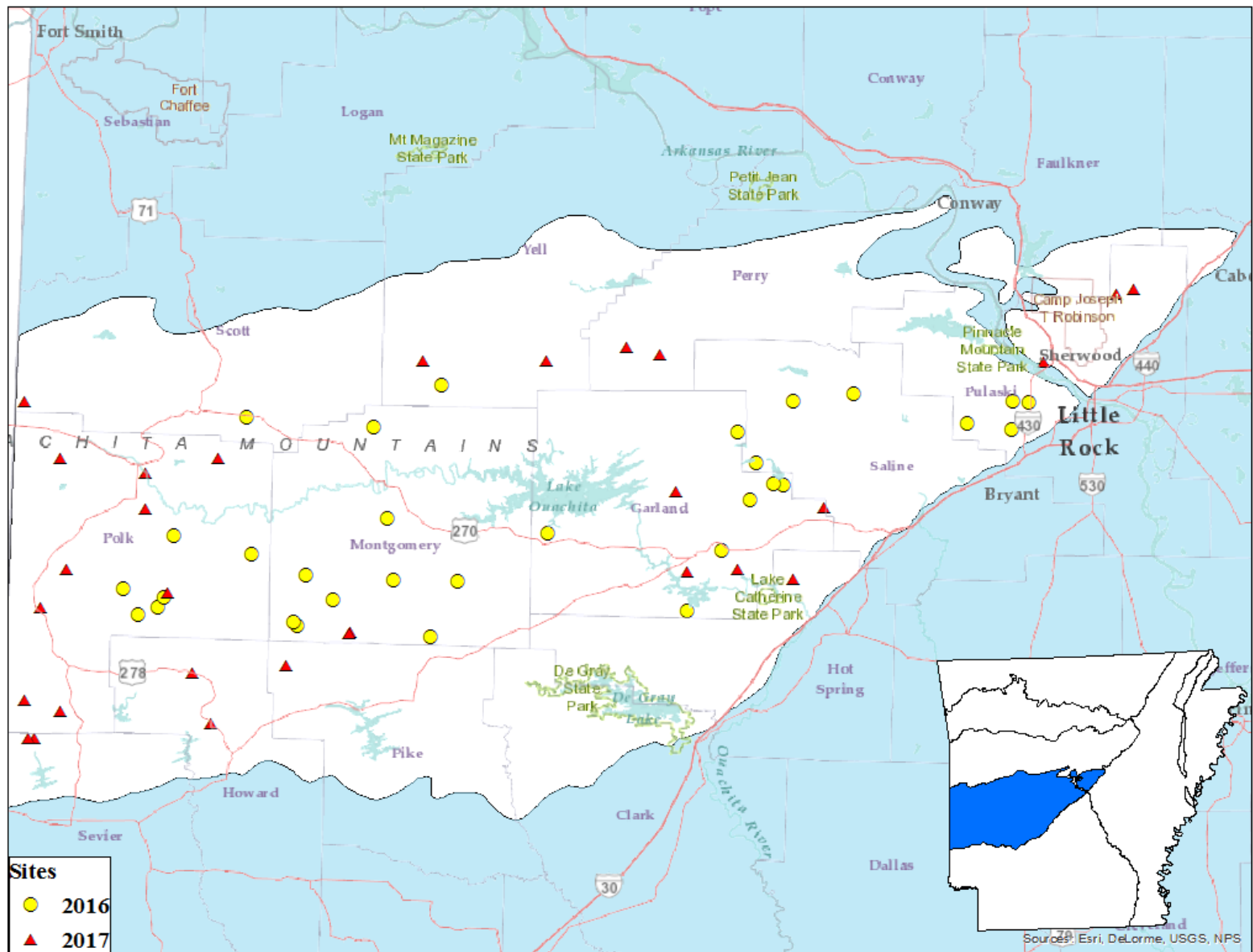
Ouachita Mountain ERW

Least-disturbed approach

~ 60 sites over two years



Ouachita ERW



Upcoming Public Participation Opportunities...

Assessment Methodology
Triennial Review
303(d)



Assessment Methodology

- Public Listening Session
- Stakeholder Workgroup
- 30 day public comment
- Public Hearing(s)
- Response to Comments
- 2018 303(d) list assessments begins

<https://www.adeq.state.ar.us/water/planning/integrated/assessment/>



"To protect, enhance, and restore the natural environment for the well-being of all Arkansans."

Water Division

[Resource Library](#)

Water Quality Planning

[AquaView](#)[Reports & Data](#)[Presentations](#)[Publications \(Variety\)](#)

Regulation 2 - Water Quality Standards

Criteria Development

Surface Water Monitoring Program

Integrated Monitoring and Assessment Report including 305(b), 303(d), and TMDLs

2018 Assessment Methodology Review

[Arkansas's 303\(d\) List Overview](#)[Final/Draft – 303\(d\) List by Year](#)[Arkansas TMDLs](#)

Groundwater Protection Program

Instream Certification/ Authorizations STAA and 401

Whole Effluent Toxicity (WET)

2018 Assessment Methodology Review

Section 305(b) of the Federal Water Pollution Control Act (hereinafter “Clean Water Act”) requires states to perform a comprehensive assessment of the state’s water quality to be reported to the U.S. Environmental Protection Agency (EPA) every two years. This assessment provides information on the quality of the state’s waters; the extent to which state waters provide for the protection and propagation of a balanced population of fish, shellfish, and wildlife, and allow recreational activities in and on the water; and how pollution control measures are leading to water quality standards attainment.

Arkansas’ waters are evaluated in terms of whether their assigned water quality standards and designated uses, as delineated in the Arkansas Pollution Control and Ecology Commission’s (APC&EC) Regulation 2, are being attained. Monitoring data are assessed for compliance with APC&EC Regulation 2 to determine impairment and designated use support, based upon the frequency, duration, and/or magnitude of water quality standard exceedances as delineated in the Arkansas Department of Environmental Quality’s (ADEQ) Assessment Methodology.

ADEQ follows the specific requirements of 40 C.F.R. § 130.7-130.8. ADEQ’s Assessment Methodology constitutes the process that the State of Arkansas employs to determine to which of the five integrated reporting categories a monitoring segment belongs. EPA’s most current 305(b) reporting and 303(d) listing requirements and guidance are considered when developing this assessment methodology.

[Related Documents](#)

[2016 Assessment Methodology](#)

Coming Soon:

- Public Listening Session Press Release
- Public Listening Session Comment Period
- Public Listening Sessions
- Public Listening Session Presentation
- Public Listening Session Summary

Assessment Methodology Review Contact

[Sarah Clem](#)
501-682-0660

[Questions or Comments?](#)



Email Updates

Subscribe to the email list to receive announcements and reminders regarding the review process for ADEQ’s Assessment Methodology for impaired waters (303(d) list)

[Subscribe](#)

2017 Reg. 2 Triennial Review

- Develop issues and needed/desired revisions
 - Stakeholder workgroup meet
 - Initiate rulemaking
 - Public Notice Reg. 2
 - Develop responsiveness summary
 - Legislative Committee Review Approve by Commission
-
- Submit to EPA



"To protect, enhance, and restore the natural environment for the well-being of all Arkansans."

2018 303(d) Update

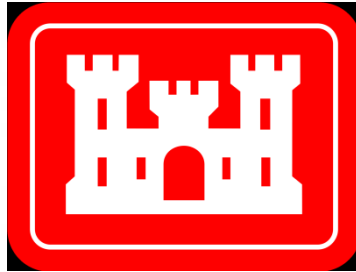
- Data solicitation
- POR April 1, 2012-March 31, 2017

COMING SOON



"To protect, enhance, and restore the natural environment for the well-being of all Arkansans."

Arkansas HAB Workgroup



Beaver Water District



Arkansas
Department
of Health



UNIVERSITY OF
ARKANSAS



ARKANSAS WATER
RESOURCES CENTER



Next Steps

- August 31, 2015 HAB Introduction
- November 9, 2015 Recreation/Source Water HAB monitoring
Law and Policy
- January 2016 Data Availability/Modeling
CAW/BWD –Source Water
ADH Swim Beach Program
- April 2016 Citizen Program Development
Develop Recreation/S.W. Monitoring Flow
Chart (based on assimilation of common
themes)
HAB Triggers
- June 2016 skip
- July 2016 AWRC Annual Conference/Workshop

Arkansas HAB Workgroup

Major points

- 1) Education - public awareness, public perception, how are we going to disseminate information, advisories, etc?
- 2) Funding for monitoring - Monitoring is going to be a must, how is this going to be funded/coordinated?
- 3) Standards/triggers--What are the triggers that are going to require an alert, advisory, swim beach closure, etc?
- 4) Communication - How are we going to communicate among groups HAB related information?

[About Us](#)[About ADEQ's Website](#)[Web-based Environmental Applications](#)[ADEQ Website User Experience Survey](#)[Related Links & Documents](#)[ADEQ's Information Technology Services](#)[Arkansas GIS Office](#)

The Arkansas GIS Office is a good source for special statewide base maps and other tools that can be used in conjunction with some of ADEQ's downloadable databases.

[Earth911](#)

Earth911 delivers a mix of recycling data and environmental news.

Web-based Environmental Applications

The web-based applications and reporting tools below allow citizens to send a pollution complaint, report permit data or information, and view the locations of thousands of physical sites that require ADEQ permits or supervision.

Mobile Apps

The following mobile applications work directly from some smart phones.

- [ADEQ's Mobile Pollution Complaint App](#)
Submit a pollution complaint by using ADEQ's mobile app that will allow users anywhere in the state to report environmental hazards directly from some smart phones.



- [Earth911 iRecycle Mobile Recycling App](#)
Find Local Recycling Locations Fast.
Search by ZIP code for ways to recycle more than 350 different materials whether on-the-go or at home. Developed by Earth911, this app helps consumers and businesses find local (United States only), convenient recycling opportunities.



Web Apps

These internet-based applications offer the public a paperless way to provide applications and reports to ADEQ.

- [ePortal](#)
The ADEQ ePortal system is an online service that allows the public to submit a variety of permit applications, registrations, reports, and other forms to ADEQ in a secure, online environment. The ePortal system also allows you to track the progress of your submissions.
- [NetDMR](#)
NPDES permittees can submit monitoring reports electronically through the EPA's NetDMR website. Training and additional information is available through [ADEQ's Water Enforcement branch](#).

ADEQ Web-based Applications Contacts

[Mobile Apps](#)[ePortal](#)[NetDMR](#)[David Ramsey](#)

501-682-0615

[SLEIS](#)[Interactive GIS Web Mapping Apps](#)[William Jackson](#)

501-682-0956

Interactive GIS Web Mapping Apps

The following web applications allow for interactively viewing and locating permitted facilities and more. These applications also allow the user to pan and zoom, search and interact with the maps.

The potential exists for large amounts of data to be transmitted during use of these sites. Please note that loading time will vary depending on your connection speed and the amount of data being requested.

- [EnviroView](#)

EnviroView includes map layers from 31 different datasets. You can view facilities with ADEQ permits that regulate air emissions, water discharges, mining, fuel storage tanks, solid waste, and waste tires. Additional map layers show hazardous waste generators, ADEQ inspection districts, and environmental information, such as ecologically sensitive streams and water bodies, extraordinary resource waters, and natural and scenic waterways. Other supporting layers, such as congressional districts and census tracts, are supplied by other state and federal agencies.

 [A complete list of ADEQ datasets linked to EnviroView](#)

- [AquaView](#)


AquaView allows users to view and access water-related data collected by ADEQ's Water Division. Layers include locations of ADEQ's routine and ambient sites from which water chemistry data is collected and analyzed (Water Quality Monitoring Stations) and locations of ADEQ's biological (fish and macroinvertebrate) collections. Also included are supporting layers, such as High Quality Water designations (Extraordinary Resource Waters, Ecologically Sensitive Waterbodies, and Natural and Scenic Waterways) and impaired streams and lakes included on Arkansas's 303(d) list. By selecting more info, under pop-up windows, users can access water chemistry and biological data from collection sites. The query function also allows data to be selected based on county, ecoregion, or major watershed basins.

- [Arkansas Brownfield Program Viewer](#)

Arkansas Brownfield Program Viewer provides the locations and information about industrial sites that may have been contaminated by hazardous substances.

It includes rehabilitated sites that now serve new purposes and those still in the clean-up process.

- [MethViewer](#)

MethViewer shows the locations of methamphetamine-contaminated properties on record with the [Arkansas Crime Information Center](#) since 2008. In compliance with  [Arkansas Act 864 of 2007](#), ADEQ removes a property from this website within 10 days of being notified that the property has been cleaned up and has met ADEQ's remediation standards.

It includes rehabilitated sites that now serve new purposes and those still in the clean-up process.

AquaView



"To protect, enhance, and restore the natural environment for the well-being of all Arkansans."