



DIVISION OF ENVIRONMENTAL QUALITY | OFFICE OF AIR QUALITY

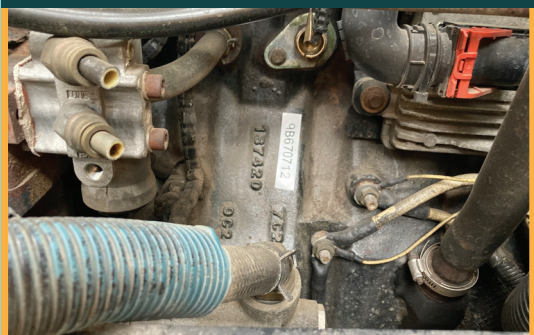
# Scrappage Tips

1. The vehicle, equipment, and/or engine being replaced must be scrapped or rendered permanently disabled within **ninety (90) days** of being replaced.
2. Cut a **3-inch by 3-inch** hole in the engine block (the part of the engine containing the cylinders).  
**Tip:** Include a measuring tape in the photo and take the before and after photo from the same angle and location of the engine.
3. Disabling the chassis is completed by cutting through the frame/frame rails on each side at a point located between the front and rear axles.

## Digital photos as follows:

1. Side profile of the vehicle, prior to disabling.  
**Tip:** Try to get a photo of the entire vehicle.
2. A legible photo of the VIN tag or equipment serial number.
3. A legible photo of engine label showing serial number, engine family number, and engine model year.

### ENGINE BLOCK



INTACT



AFTER HOLE

### FRAME RAIL

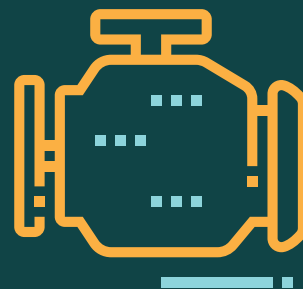


INTACT



AFTER CUT

Evidence of appropriate disposal is **required** for reimbursement of eligible expenses.



If you are concerned about any photos, contact:

**KATRINA JONES**

Air Policy Development Coordinator

e: [Katrina.Jones@adeq.state.ar.us](mailto:Katrina.Jones@adeq.state.ar.us)