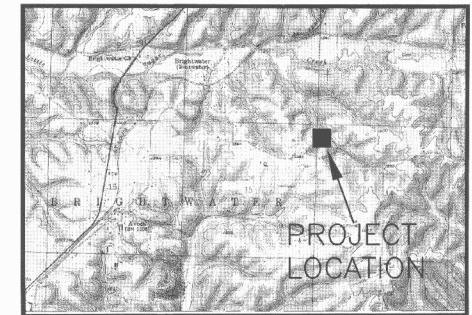
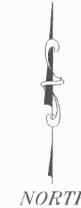


# WASTE WATER TREATMENT PLANS FOR DEER HAVEN SUBDIVISION

PROJECT No. 06-1001  
AVOCA , BENTON COUNTY ARKANSAS



VICINITY MAP  
SCALE: NONE

## TABLE OF CONTENTS

1	COVER SHEET
2	DRIPPER FIELD LAYOUT
3	TREATMENT PLANT LAYOUT
4	DETAILS

## GOVERNING AGENCIES

BENTON CO. WATER AUTH., DIST. #1  
P.O. BOX 127  
111 E. ROSE ST.  
AVOCA, AR 72711  
CONTACT: WAYNE ALLEN  
TEL.: (877) 647-8030  
CELL.: (479) 936-0333

ARKANSAS DEPARTMENT OF HEALTH & HUMAN SERVICES  
4815 WEST MARKHAM STREET  
P.O. BOX 3867  
LITTLE ROCK, ARKANSAS 72205-3867  
CONTACT: ROY DAVIS  
TEL.: (501) 661-2000  
FAX.: (501) 661-2032

ADEQ  
8001 NATIONAL DRIVE  
P.O. BOX 8913  
LITTLE ROCK, AR 72219-8913  
CONTACT: HENRY INSUA  
TEL.: (501) 682-0651

## APPROVALS

ARKANSAS DEPARTMENT OF HEALTH AND HUMAN SERVICES:  
DATE: \_\_\_\_\_ No. 56608-3

ADEQ:  
DATE: \_\_\_\_\_

BENTON COUNTY WATER DISTRICT #1:  
DATE: \_\_\_\_\_

## OWNER

FRANKLIN MILLER  
1000 CAPTAIN GOOD ST.  
PEA RIDGE, AR 72751  
(479) 451-9030

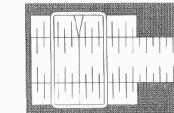
### SAFETY NOTICE TO CONTRACTOR

In accordance with generally accepted construction practices, the contractor shall be solely and completely responsible for conditions at the job site, including safety of all persons and property during performance of the work. This requirement will apply continuously and not limited to normal working hours.

The duty of the engineer to conduct construction review of the contractor's performance is not intended to include review of the adequacy of the contractor's safety measures, in, or near the construction site.



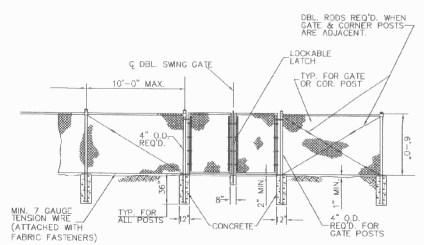
PRESLEY, BRANNAN, & ASSOCIATES, Inc.  
CONSULTING ENGINEERS



2143 WORTH LANE  
SPRINGDALE, AR 72764  
OFFICE: (479) 756-8720  
FAX: (479) 756-8714

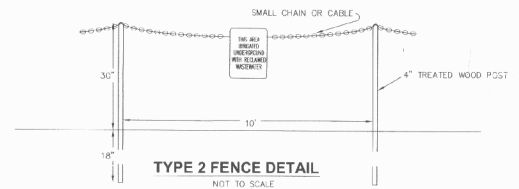


CONTOUR INTERVAL = 1 FT.



**TYPE 1 FENCE DETAIL**  
NOT TO SCALE

All drip disposal lines shall be buried a min. of 10 feet from all property lines.  
 Bowers Wastewater treatment plant shall have a 100 feet min. distance from all lot lines.  
 Check valves and air/vac release valves shall be placed according to the specifications.



**TYPE 2 FENCE DETAIL**  
NOT TO SCALE

- 25 TEST PIT LOCATIONS
- C CHECK VALVE
- (W) SHALLOW GROUNDWATER MONITORING WELL (SEE DETAIL, SHEET 4/4)
- ⊠ LYSIMETER LOCATION (SEE SPECIFICATIONS)
- 1-1 ZONE-CELL LABELS



REVISIONS 06/24/06 07/26/06	<b>PRESLEY, BRANNAN, &amp; ASSOCIATES, Inc.</b> CONSULTING ENGINEERS 2143 WORTH LANE SPRINGDALE, AR 72764 OFFICE: (479) 756-8700 FAX: (479) 756-8714	DRIPPER FIELD LAYOUT for DEER HAVEN SUBDIVISION for FRANKLIN MILLER TO THE COUNTY OF BENTON, ARKANSAS	DRAWN BY: JCB/HC PLOT: 06-1001 CHECKED BY: CLP PLOT NO.: 06-1001-04	SCALE: 1"=40' DATE: 04/8/06	SHEET: 2/4
-----------------------------------	---	---	--	--------------------------------	------------





DETAILED PLANS:

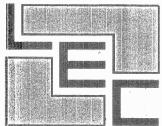
# DEER HAVEN

PART OF SECTION 15, T-20-N, R-29-W  
BENTON COUNTY, ARKANSAS

JANUARY 2006  
REVISED: FEBRUARY 2006  
REVISED: MAY 2006

PREPARED FOR:

MP DEVELOPMENT, LLC  
1000 CAPTAIN GOOD STREET  
PEA RIDGE, ARKANSAS 72751



Prepared By:

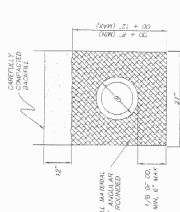
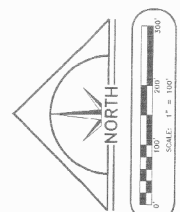
LEMONS ENGINEERING CONSULTANTS, INC.  
204 CHERRY STREET  
CABOT, ARKANSAS 72023

## INDEX OF SHEETS

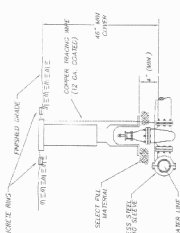
Preliminary Plat	1
Street Layout	2
Street Plan/Profile	3-7
Water Layout	8
Sewer Layout	9
Sewer Plan/Profile	10-15
Pump Station #1 Details	16
Erosion Control Plan	17

NO.	DATE	DESCRIPTION
1	10/1/2008	CONCEPT
2	10/1/2008	CONCEPT
3	10/1/2008	CONCEPT
4	10/1/2008	CONCEPT
5	10/1/2008	CONCEPT
6	10/1/2008	CONCEPT
7	10/1/2008	CONCEPT
8	10/1/2008	CONCEPT
9	10/1/2008	CONCEPT
10	10/1/2008	CONCEPT
11	10/1/2008	CONCEPT
12	10/1/2008	CONCEPT
13	10/1/2008	CONCEPT
14	10/1/2008	CONCEPT
15	10/1/2008	CONCEPT
16	10/1/2008	CONCEPT
17	10/1/2008	CONCEPT
18	10/1/2008	CONCEPT
19	10/1/2008	CONCEPT
20	10/1/2008	CONCEPT

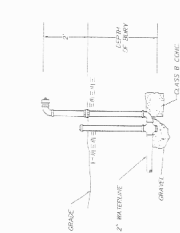
Sheet No.	018
Project No.	2008
Date	10/1/2008
Scale	1" = 100'
North Arrow	As Shown
Drawn By	JL
Checked By	JL
Approved By	JL
Project Name	DEER HAYEN WATER LAYOUT
Location	1000 Capital Good Street, Peo Ridge, AR 72751
Client	LEMONS ENGINEERING CONSULTANTS, INC.



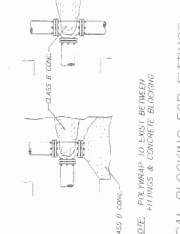
TYPICAL - BEDDING DETAIL  
 NTS  
 OR AS NOTED NECESSARY FOR SIZES



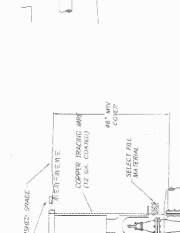
TYPICAL CONNECTION  
 TAPPING SLEEVE & VALVE  
 NTS



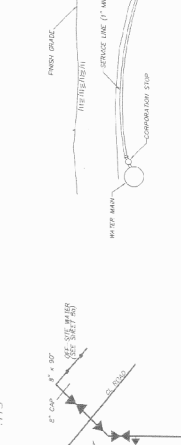
TYPICAL - BLOCK-OFF ASSEMBLY  
 NTS  
 ECLIPSE #77 TO BE USED IN THESE APPLICABLE



TYPICAL BLOCKING FOR FITTINGS  
 NTS



TYPICAL VALVE SETTING  
 NTS



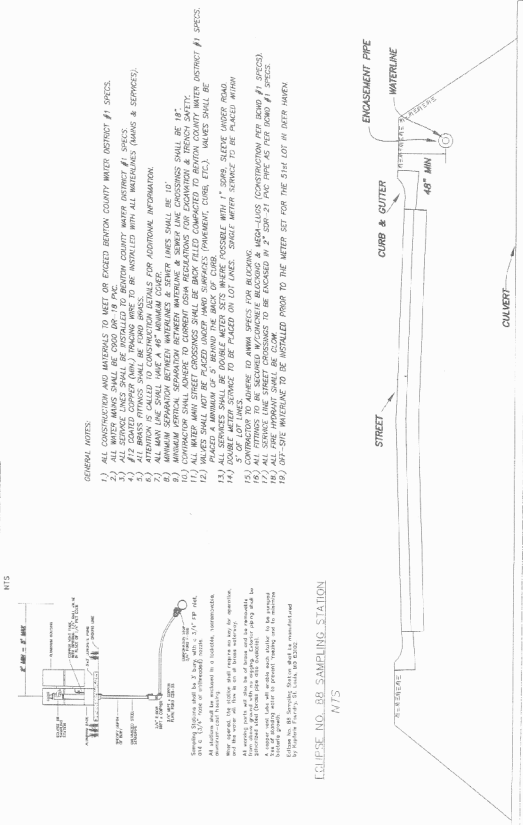
WATER SERVICE DETAIL  
 NTS



WATER MAIN CROSSING DETAIL  
 NTS



TYPICAL - FIRE HYDRANT ASSEMBLY  
 NTS



BAVINE CROSSING DETAIL  
 NTS

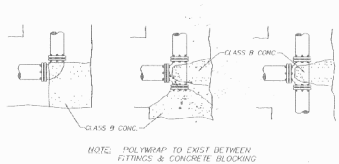


OWNER: FRANKLIN MILLER

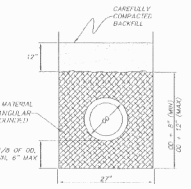
OWNER: FRANKLIN MILLER

- GENERAL NOTES:
- 1) ALL CONSTRUCTION AND MATERIALS TO MEET OR EXCEED BENTON COUNTY WATER DISTRICT #1 SPECS.
  - 2) ALL SERVICE LINES SHALL BE INSTALLED TO BENTON COUNTY WATER DISTRICT #1 SPECS.
  - 3) ALL SERVICE LINES SHALL BE INSTALLED WITH ALL INSURANCES (MANS & SERVICES).
  - 4) ALL SERVICE LINES SHALL BE INSTALLED WITH ALL INSURANCES (MANS & SERVICES).
  - 5) ATTENTION IS CALLED TO CONSTRUCTION DETAILS FOR ADDITIONAL INFORMATION.
  - 6) MINIMUM SEPARATION BETWEEN WATER MAINS & SEWER LINES SHALL BE 10'.
  - 7) MINIMUM SEPARATION BETWEEN WATER MAINS & GAS LINES SHALL BE 10'.
  - 8) MINIMUM SEPARATION BETWEEN WATER MAINS & POWER LINES SHALL BE 10'.
  - 9) EXCAVATION SHALL ADHERE TO CURRENT OSHA REGULATIONS FOR EXCAVATION & TRENCH SAFETY.
  - 10) ALL SERVICE LINES SHALL BE INSTALLED WITH SUFFICIENT DEPTH TO MEET BENTON COUNTY WATER DISTRICT #1 SPECS.
  - 11) ALL SERVICE LINES SHALL BE INSTALLED WITH SUFFICIENT DEPTH TO MEET BENTON COUNTY WATER DISTRICT #1 SPECS.
  - 12) ALL SERVICE LINES SHALL BE INSTALLED WITH SUFFICIENT DEPTH TO MEET BENTON COUNTY WATER DISTRICT #1 SPECS.
  - 13) ALL SERVICE LINES SHALL BE INSTALLED WITH SUFFICIENT DEPTH TO MEET BENTON COUNTY WATER DISTRICT #1 SPECS.
  - 14) DOUBLE WATER SERVICE TO BE PLACED ON LOT LINES. SINGLE WATER SERVICE TO BE PLACED WITHIN LOT.
  - 15) CONTRACTOR TO ADHERE TO ANY SPEC SPECIFICATIONS FOR ANY DISCREPANCIES PER OWNER'S REQUEST.
  - 16) ALL SERVICE LINES SHALL BE INSTALLED WITH SUFFICIENT DEPTH TO MEET BENTON COUNTY WATER DISTRICT #1 SPECS.
  - 17) ALL SERVICE LINES SHALL BE INSTALLED WITH SUFFICIENT DEPTH TO MEET BENTON COUNTY WATER DISTRICT #1 SPECS.
  - 18) ALL SERVICE LINES SHALL BE INSTALLED WITH SUFFICIENT DEPTH TO MEET BENTON COUNTY WATER DISTRICT #1 SPECS.
  - 19) ALL SERVICE LINES SHALL BE INSTALLED WITH SUFFICIENT DEPTH TO MEET BENTON COUNTY WATER DISTRICT #1 SPECS.

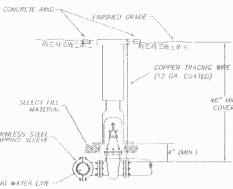
ECLIPSE NO. 88 SAMPLING STATION  
 NTS



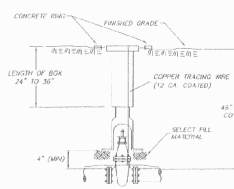
TYPICAL BLOCKING FOR FITTINGS  
NTS



TYPICAL — BEDDING DETAIL  
TO BE PLACED AS DIRECTED BY COUNTY,  
OR AS DEEMED NECESSARY PER SPECS

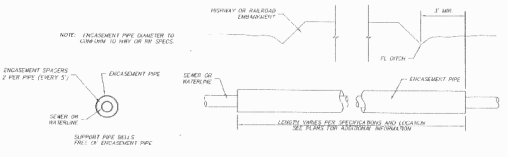
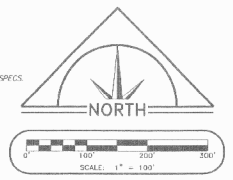


TYPICAL CONNECTION  
TAPPING SLEEVE & VALVE  
NTS

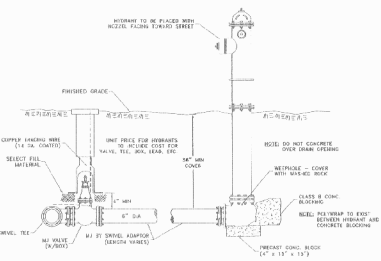


TYPICAL VALVE SETTING  
NTS

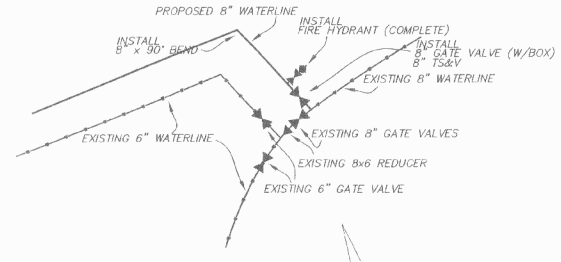
- GENERAL NOTES
- 1.) ALL CONSTRUCTION AND MATERIALS TO MEET OR EXCEED HENION COUNTY WATER DISTRICT #1 (OPERATOR) SPECS. CONTRACTOR TO VERIFY MATERIALS W/OPERATOR PRIOR TO COMMENCEMENT OF CONSTRUCTION.
  - 2.) ALL WATER MAINS SHALL BE C-900 PIPE.
  - 3.) ALL SERVICE LINES SHALL BE AS PER OPERATOR SPECS.
  - 4.) #12 COATED COPPER (C90) TRAMPING WIRE TO BE INSTALLED WITH ALL WATERLINES (MAINS & SERVICES).
  - 5.) ALL BRASS FITTINGS SHALL BE FORD BRASS.
  - 6.) ATTENTION IS CALLED TO CONSTRUCTION DETAILS FOR ADDITIONAL INFORMATION.
  - 7.) MINIMUM SEPARATION BETWEEN WATERLINES & SERVICES SHALL BE 10".
  - 8.) CONTRACTOR SHALL ADHERE TO CURRENT OSHA REGULATIONS FOR EXCAVATION & TRENCH SAFETY.
  - 9.) ALL WATER MAIN STREET CROSSINGS SHALL BE BACK FILLED, COMPACTED TO OPERATOR SPECS.
  - 10.) VALVES SHALL NOT BE PLACED UNDER HARD SURFACES (PAVEMENT, CURB, ETC.). VALVES SHALL BE PLACED A MINIMUM OF 5' BEHIND THE BACK OF CURB.
  - 11.) DOUBLE METER SERVICE TO BE PLACED ON LOT LINES. SINGLE METER SERVICE TO BE PLACED WITHIN 5' OF LOT LINES.
  - 12.) CONTRACTOR TO ADHERE TO ABWA SPECS FOR BLOWING.
  - 13.) OFF-SITE WATERLINE TO BE INSTALLED PRIOR TO THE METER SET FOR 51ST LOT IN DEER HAVEN.



PIPE ENCASEMENT — HIGHWAY & RAILROAD CROSSING  
NTS



TYPICAL — FIRE HYDRANT ASSEMBLY  
NTS

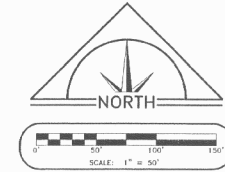
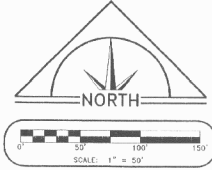


LEMONS ENGINEERING CONSULTANTS, INC.  
100 S. SPRING STREET  
204 CHERY STREET  
DEER HAVEN, AR 72021  
PH: (501) 842-5081 | FAX: (501) 779-1285

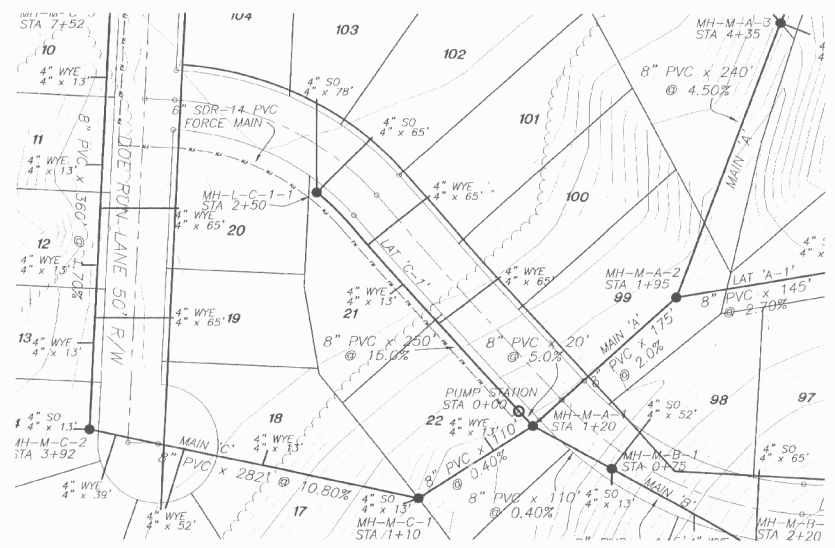
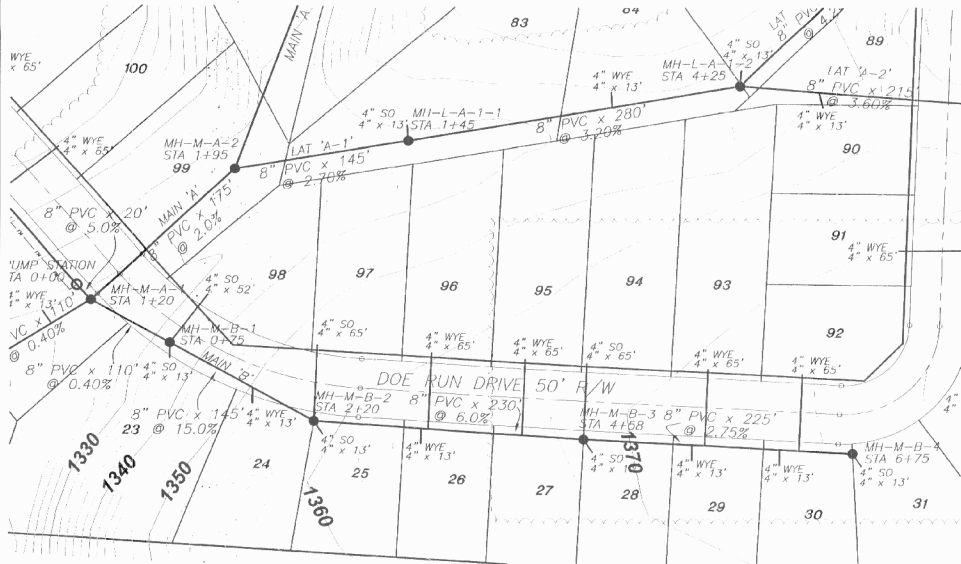
OFF-SITE WATERLINE EXTENSION  
DEER HAVEN  
PART OF THE E 1/2 OF THE NW 1/4 OF SECTION 15, 1-20-N,  
R-29-W, BENTON COUNTY, ARKANSAS

MP Development  
1000 Captain Good Street  
Pac Ridge, AR 72751

NO.	DATE	BY	REVISION
1	3/20/25	MM	CONCEPT
2			PRELIMINARY
3			FINAL CONTRACT
4			AS-BUILT

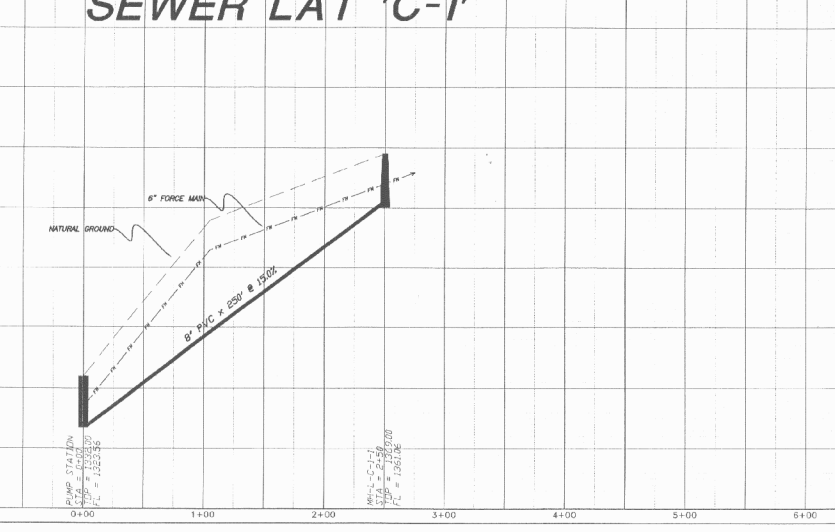
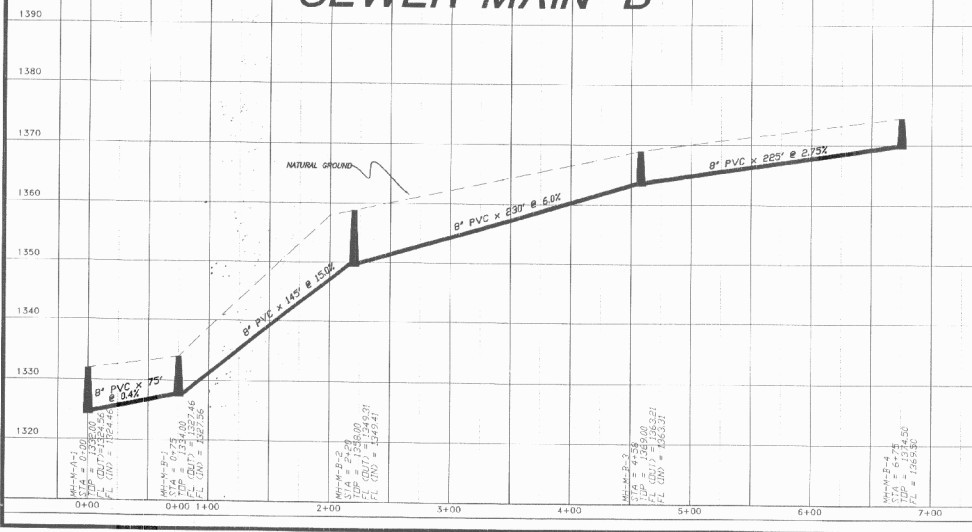


- GENERAL NOTES:
- 1.) ACTUAL MANHOLE DEPTHS & TOP ELEVATIONS TO BE FIELD VERIFIED BASED ON FINISHED GRADES & PROPOSED STREET ELEVATIONS.
  - 2.) CONTRACTOR SHALL BE RESPONSIBLE FOR PROVIDING SEWER "AS-BUILT" INFORMATION ACCORDING TO THE FOLLOWING:
    - a.) EACH WYE SHALL BE MEASURED FROM THE DOWNSTREAM MANHOLE.
    - b.) THE ACTUAL LENGTH OF THE SERVICE SHALL BE MEASURED FROM THE MANHOLE.
    - c.) THE END OF THE SERVICE SHALL BE MEASURED FROM THE CLOSEST ADJACENT PROPERTY LINE IF POSSIBLE, AND
    - d.) THE END OF THE SERVICE SHALL BE MARKED ACCORDING TO THE CITY'S REQUIREMENTS.



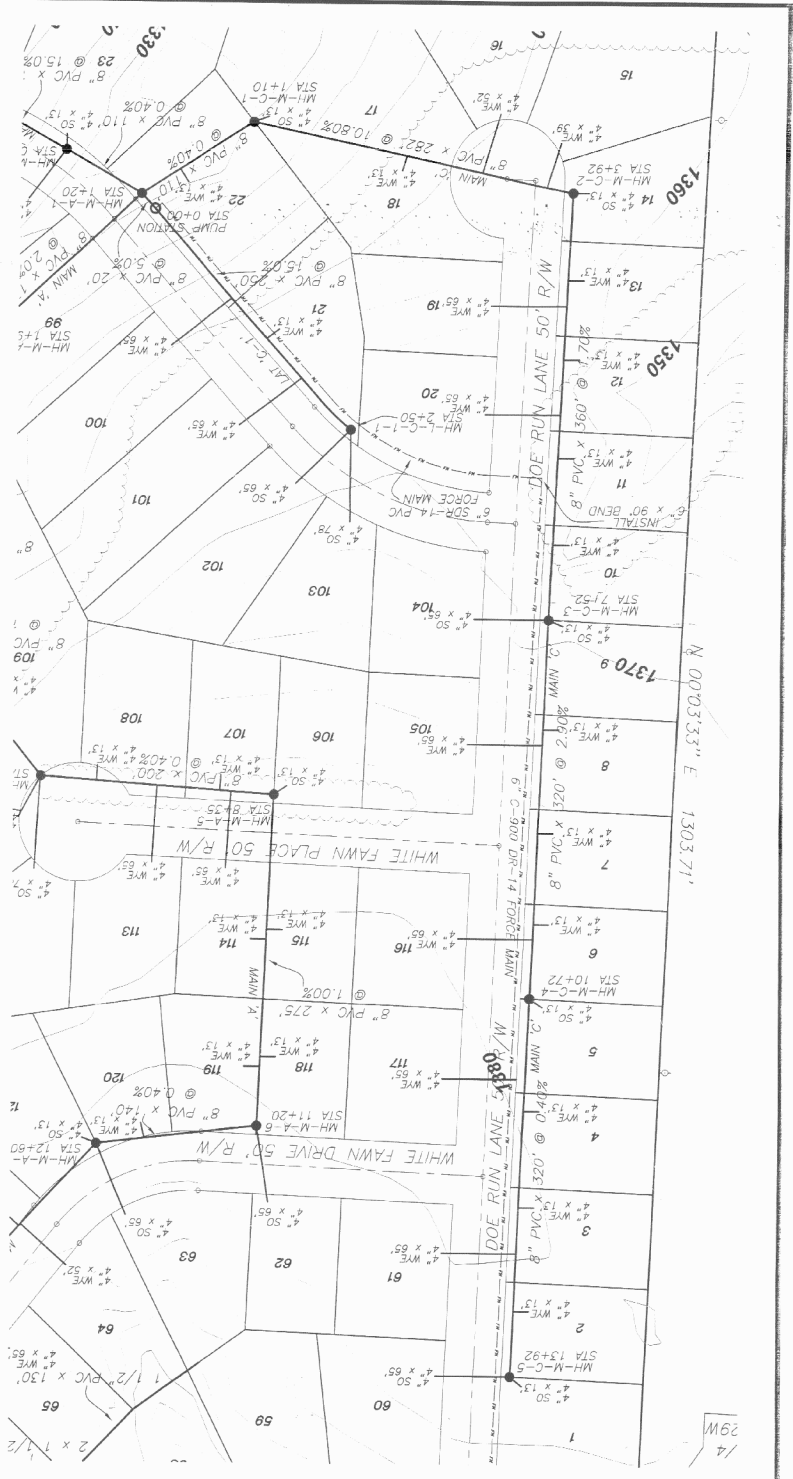
### SEWER MAIN 'B'

### SEWER LAT 'C-1'

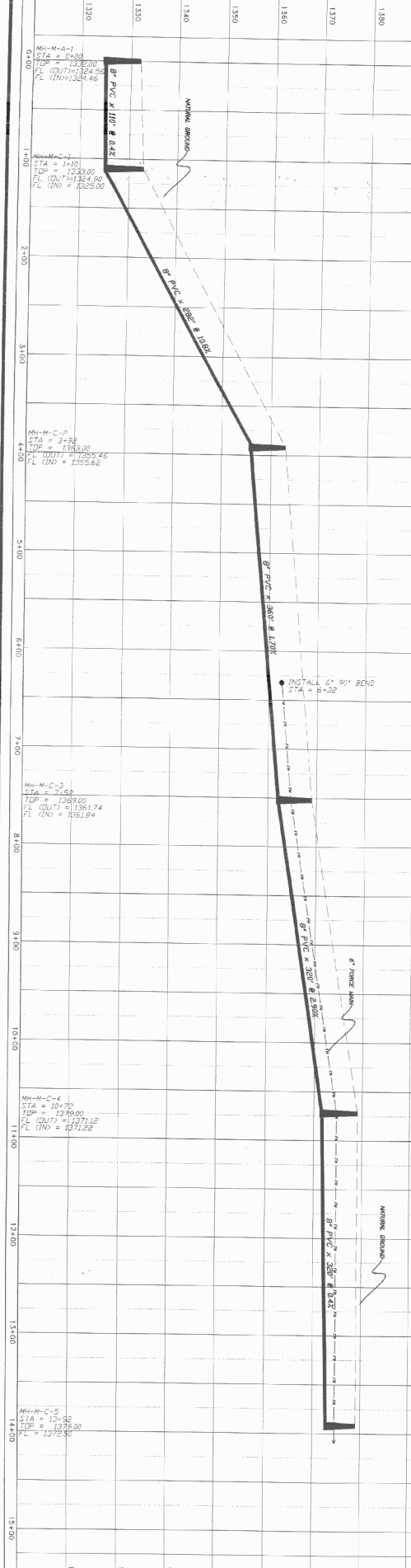


Project No.	25-046
Date	January 2005
Drawn By	L. HOBBS
Checked By	
Design	DESIGN
Plan	PLAN
Profile	PROFILE
As-Built	AS-BUILT
Scale	1" = 50'
Sheet No.	14
Total Sheets	17





**SEWER MAIN 'C'**



- GENERAL NOTES:**
- 1) THESE NOTES ARE TO BE READ IN CONJUNCTION WITH THE FIELD VERIFIED RECORD OR AS-BUILT DRAWING.
  - 2) THE END OF THE SERVICE SHALL BE MARKED ACCORDING TO THE CITY'S REQUIREMENTS.
  - 3) THE END OF THE SERVICE SHALL BE MARKED ACCORDING TO THE CITY'S REQUIREMENTS.
  - 4) THE END OF THE SERVICE SHALL BE MARKED ACCORDING TO THE CITY'S REQUIREMENTS.
  - 5) THE END OF THE SERVICE SHALL BE MARKED ACCORDING TO THE CITY'S REQUIREMENTS.



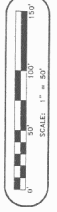
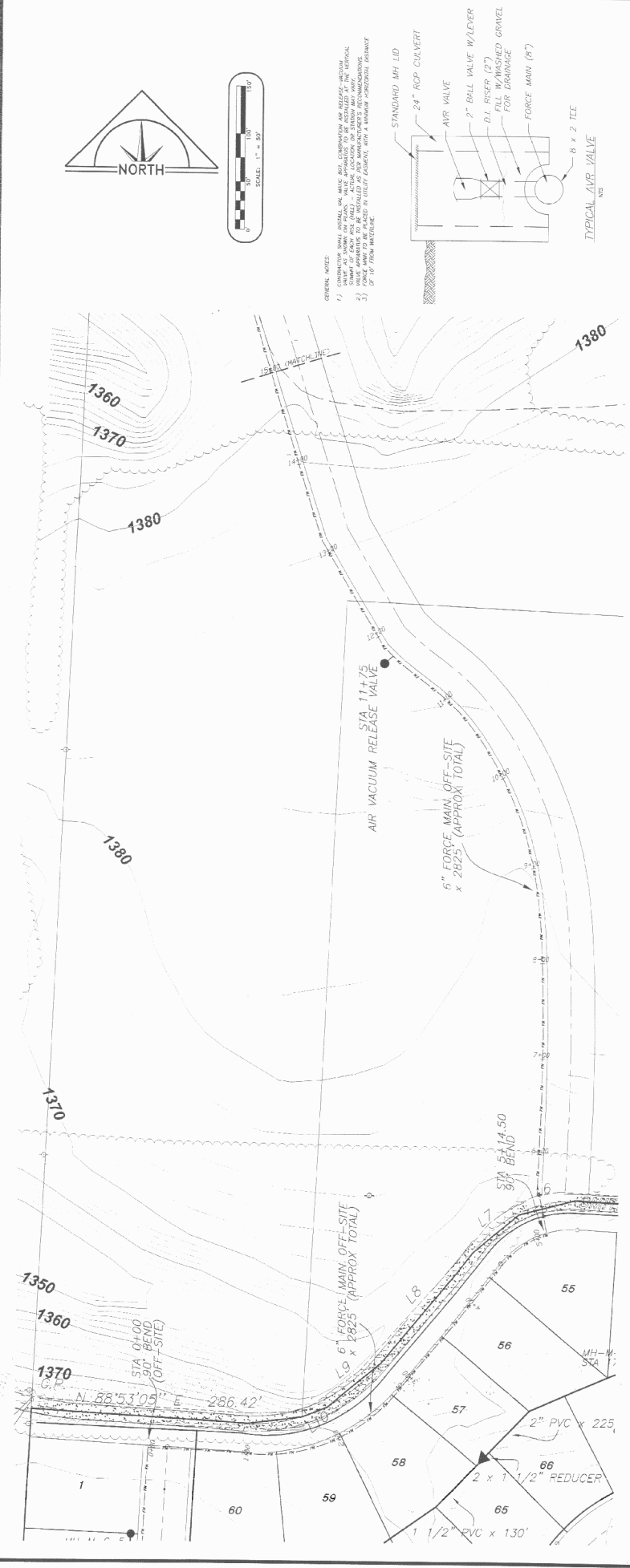
Project No.	05-046	Date	January 2006
Drawn by	sheerw.dwg	Scale	1" = 50'
Checked by	L. Mczally	Sheet No.	15 of 17

No.	Revisions	Date	By
1	CONCEPT	10/20/05	SM
2	DRAWN		
3	PRELIMINARY		
4	BID/CONSTR		
5	FINAL		
6	AS-BUILT		

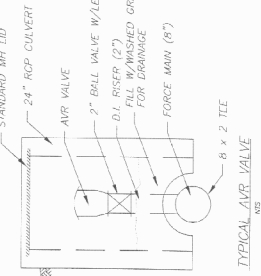
**SEWER PLAN/PROFILE - MAIN 'C'**  
**DEER HAVEN**  
 PART OF THE E 1/2 OF THE NW 1/4 OF SECTION 15, T-20-N,  
 R-29-W, BENTON COUNTY, ARKANSAS

**LEMONS ENGINEERING CONSULTANTS, INC.**  
 204 CHERRY STREET 100 S. SPRING STREET  
 DEERHAVEN, AR 72033 SEARCH AR 72143  
 PH: (501) 843-5081 PH: (501) 279-1285

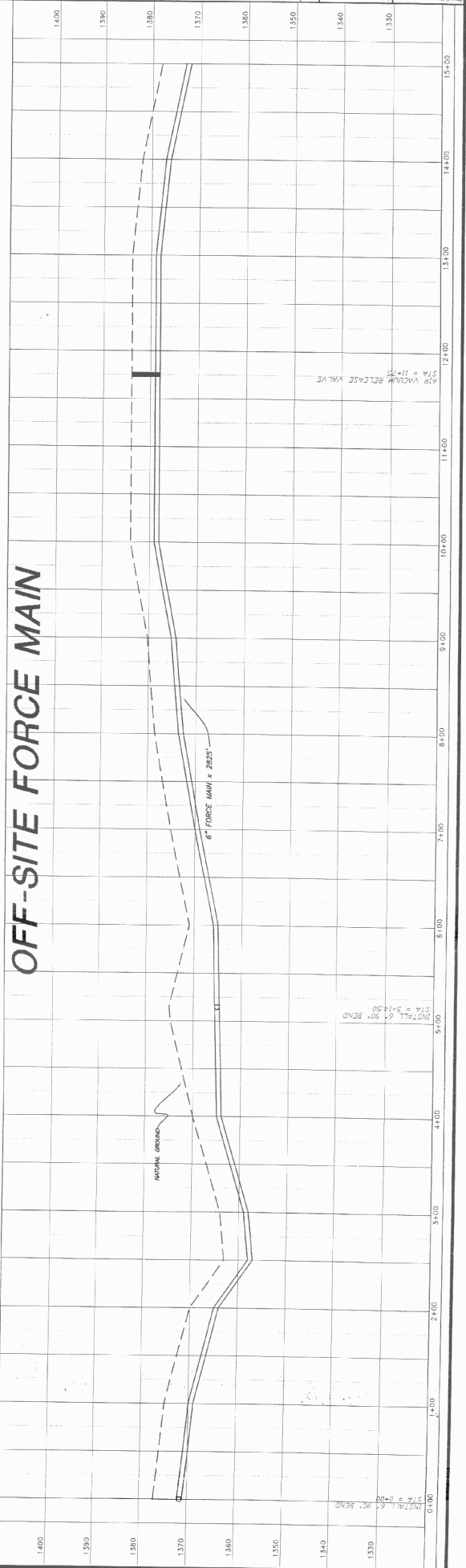
**CIVIL ENGINEERING & PLANNING**  
 WATER • SEWER • TRANSPORTATION • SUBDIVISIONS



- GENERAL NOTES:
- 1) CONSTRUCTION SHALL INSTALL AND MAINTAIN BALL COUPLERS AND RELEASE VALVES AT THE LOCATION OF BALL AND BALL COUPLERS AND RELEASE VALVES AS SHOWN ON THIS PLAN.
  - 2) FORCE MAIN TO BE INSTALLED IN UTILITY TRENCH, WITH A MINIMUM HORIZONTAL DISTANCE OF 10' FROM STRUCTURE.

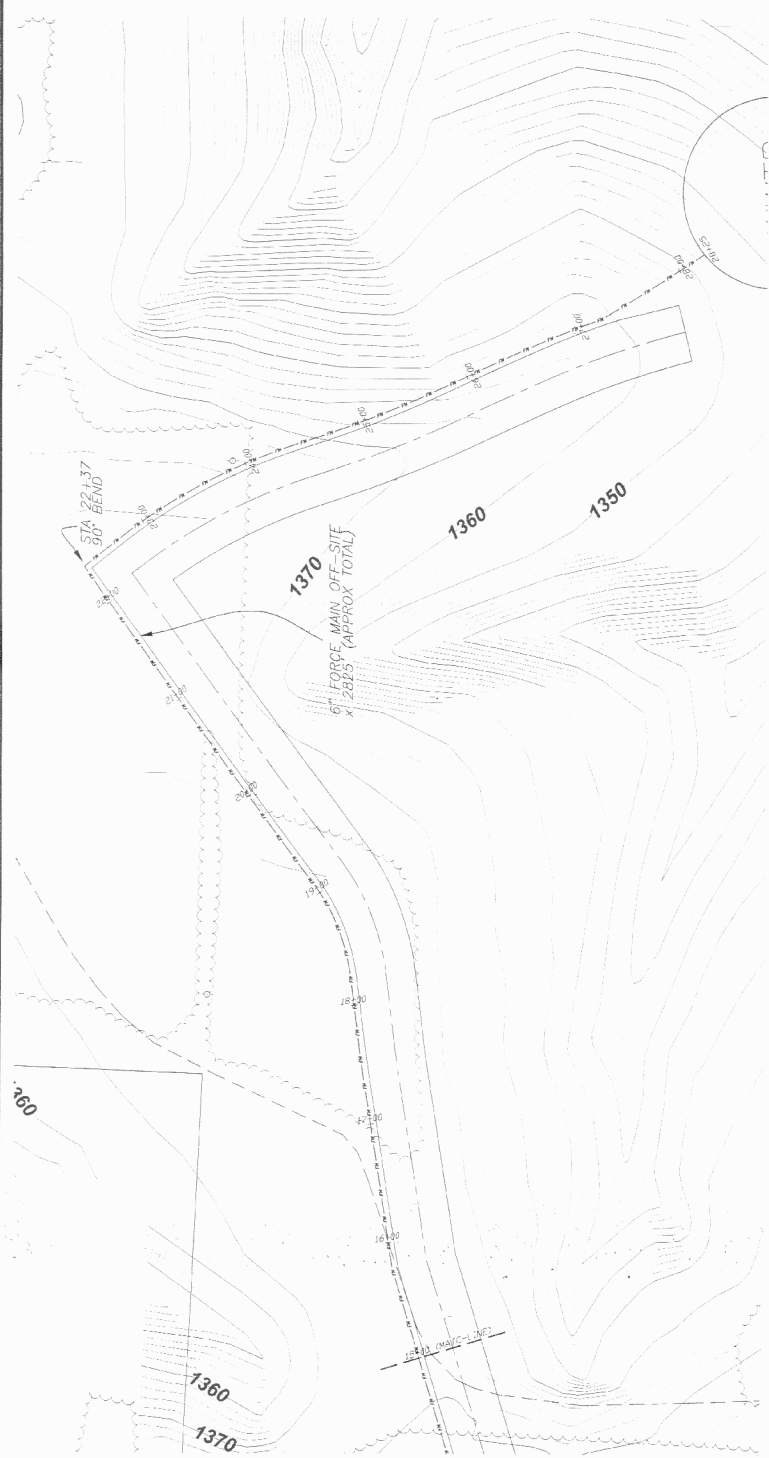
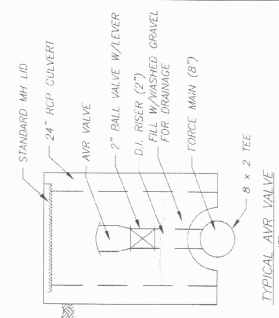


OFF-SITE FORCE MAIN

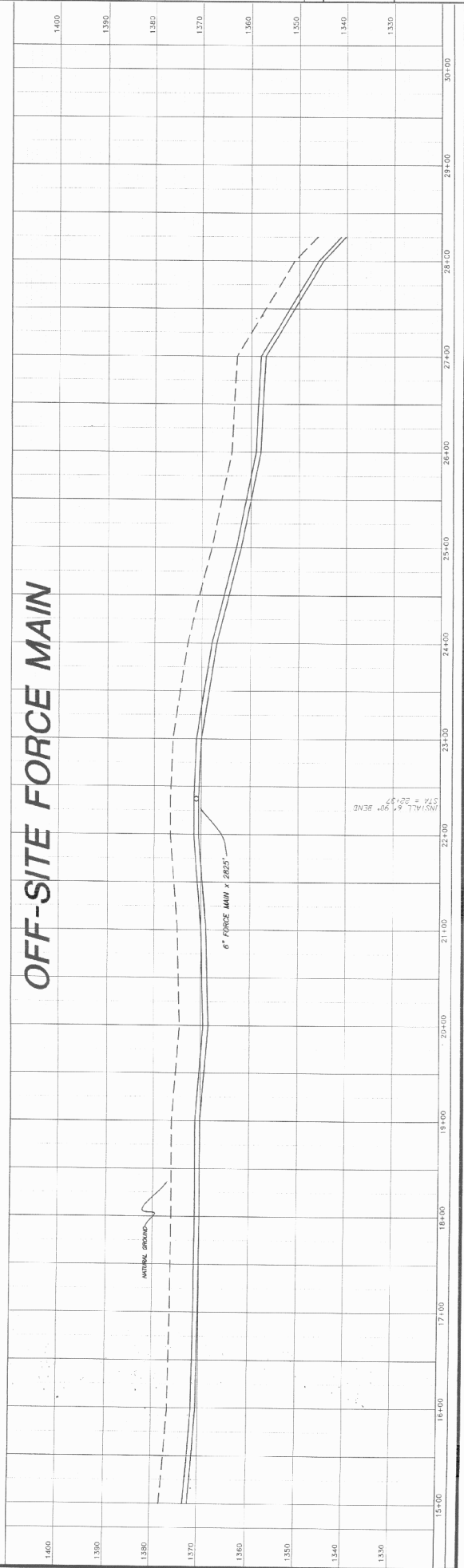


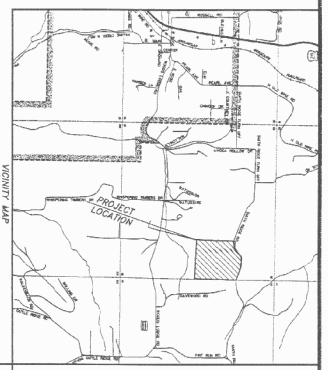
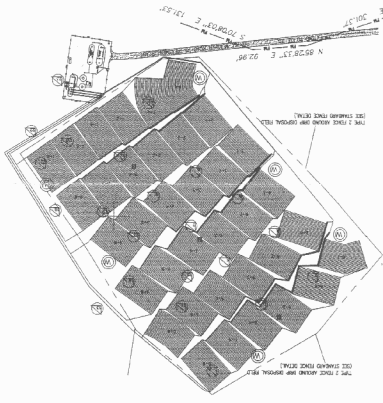
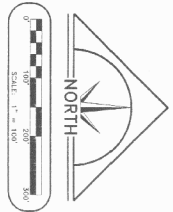
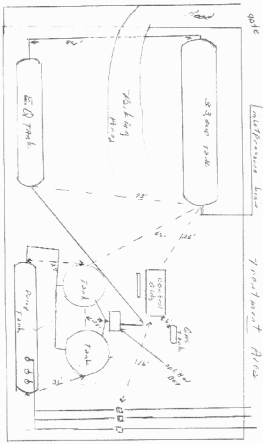


- GENERAL NOTES:
- 1) CONDUITS SHALL INSTALL 1/4" METE BELL. CONNECTIONS ARE RELEVANT TO THE ACTUAL LOCATION OF STATIONING. VERTICAL CURVE DATA SHALL BE USED TO DETERMINE THE ACTUAL LOCATION OF STATIONING.
  - 2) FORCE MAIN TO BE PLACED AT UTILITY ELEVATION, WITH A MINIMUM VERTICAL CLEARANCE OF 10' FROM WATERBODIES.



**OFF-SITE FORCE MAIN**



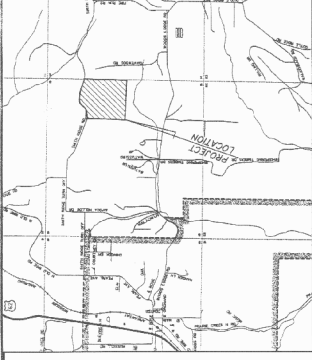


Project No. 05-046	Date August 2007	No.	Revision	Date	By	Prepared For MP Development 1000 Captain Good Street Pea Ridge, AR 72751	<input type="checkbox"/> CONCEPT <input type="checkbox"/> DRAFT <input type="checkbox"/> PRELIMINARY <input type="checkbox"/> REVISED <input type="checkbox"/> FINAL <input type="checkbox"/> AS-BUILT	<b>SEWER - 'AS BUILTS' - OFF-SITE</b> <b>DEER HAVEN</b> PART OF THE E 1/2 OF THE NW 1/4 OF SECTION 15, T-20-N, R-29-W, BENTON COUNTY, ARKANSAS
File DeerHavenSewerAB.dwg	Scale 1" = 100'	Drawn By B. Deek					LEWIS ENGINEERING CONSULTANTS, INC. 724 CHERRY STREET CANTON, AR 72023 PH: (501) 843-5081	100 S. SPRING STREET SEARCY, AR 72143 PH: (501) 279-1285
Sheet 1 of 1							<b>CIVIL ENGINEERING &amp; PLANNING</b> WATER • SEWER • TRANSPORTATION • SUBDIVISIONS	

MP Development  
 1000 Captains Good Street  
 Deer Haven, AR 72751  
 Fee Paid  
 1000 Captains Good Street  
 Deer Haven, AR 72751

SEWER - 'AS BUILTS'  
 DEER HAVEN  
 PART OF THE E 1/2 OF THE NW 1/4 OF SECTION 15, T-20-N,  
 R-29-W, BENTON COUNTY, ARKANSAS

LEMONS ENGINEERING CONSULTANTS, INC.  
 206 CHESTNUT STREET  
 SEAGAY, AR 72143  
 CIVIL ENGINEERING & PLANNING  
 WATER • SEWER • TRANSPORTATION • SUBDIVISIONS  
 PH: (501) 843-5051  
 FAX: (501) 279-1285



MANHOLE DATA

MANHOLE ID	TYPE	TOP ELEVATION	INVERT ELEVATION	DIAMETER
MP-M-A-1	1	1548.88	1516.36	36"
MP-M-A-2	1	1548.88	1516.36	36"
MP-M-A-3	1	1548.88	1516.36	36"
MP-M-A-4	1	1548.88	1516.36	36"
MP-M-A-5	1	1548.88	1516.36	36"
MP-M-A-6	1	1548.88	1516.36	36"
MP-M-A-7	1	1548.88	1516.36	36"
MP-M-A-8	1	1548.88	1516.36	36"
MP-M-A-9	1	1548.88	1516.36	36"
MP-M-A-10	1	1548.88	1516.36	36"
MP-M-A-11	1	1548.88	1516.36	36"
MP-M-A-12	1	1548.88	1516.36	36"
MP-M-A-13	1	1548.88	1516.36	36"
MP-M-A-14	1	1548.88	1516.36	36"
MP-M-A-15	1	1548.88	1516.36	36"
MP-M-A-16	1	1548.88	1516.36	36"
MP-M-A-17	1	1548.88	1516.36	36"
MP-M-A-18	1	1548.88	1516.36	36"
MP-M-A-19	1	1548.88	1516.36	36"
MP-M-A-20	1	1548.88	1516.36	36"
MP-M-A-21	1	1548.88	1516.36	36"
MP-M-A-22	1	1548.88	1516.36	36"
MP-M-A-23	1	1548.88	1516.36	36"
MP-M-A-24	1	1548.88	1516.36	36"
MP-M-A-25	1	1548.88	1516.36	36"
MP-M-A-26	1	1548.88	1516.36	36"
MP-M-A-27	1	1548.88	1516.36	36"
MP-M-A-28	1	1548.88	1516.36	36"
MP-M-A-29	1	1548.88	1516.36	36"
MP-M-A-30	1	1548.88	1516.36	36"
MP-M-A-31	1	1548.88	1516.36	36"
MP-M-A-32	1	1548.88	1516.36	36"
MP-M-A-33	1	1548.88	1516.36	36"
MP-M-A-34	1	1548.88	1516.36	36"
MP-M-A-35	1	1548.88	1516.36	36"
MP-M-A-36	1	1548.88	1516.36	36"
MP-M-A-37	1	1548.88	1516.36	36"
MP-M-A-38	1	1548.88	1516.36	36"
MP-M-A-39	1	1548.88	1516.36	36"
MP-M-A-40	1	1548.88	1516.36	36"
MP-M-A-41	1	1548.88	1516.36	36"
MP-M-A-42	1	1548.88	1516.36	36"
MP-M-A-43	1	1548.88	1516.36	36"
MP-M-A-44	1	1548.88	1516.36	36"
MP-M-A-45	1	1548.88	1516.36	36"
MP-M-A-46	1	1548.88	1516.36	36"
MP-M-A-47	1	1548.88	1516.36	36"
MP-M-A-48	1	1548.88	1516.36	36"
MP-M-A-49	1	1548.88	1516.36	36"
MP-M-A-50	1	1548.88	1516.36	36"
MP-M-A-51	1	1548.88	1516.36	36"
MP-M-A-52	1	1548.88	1516.36	36"
MP-M-A-53	1	1548.88	1516.36	36"
MP-M-A-54	1	1548.88	1516.36	36"
MP-M-A-55	1	1548.88	1516.36	36"
MP-M-A-56	1	1548.88	1516.36	36"
MP-M-A-57	1	1548.88	1516.36	36"
MP-M-A-58	1	1548.88	1516.36	36"
MP-M-A-59	1	1548.88	1516.36	36"
MP-M-A-60	1	1548.88	1516.36	36"
MP-M-A-61	1	1548.88	1516.36	36"
MP-M-A-62	1	1548.88	1516.36	36"
MP-M-A-63	1	1548.88	1516.36	36"
MP-M-A-64	1	1548.88	1516.36	36"
MP-M-A-65	1	1548.88	1516.36	36"
MP-M-A-66	1	1548.88	1516.36	36"
MP-M-A-67	1	1548.88	1516.36	36"
MP-M-A-68	1	1548.88	1516.36	36"
MP-M-A-69	1	1548.88	1516.36	36"
MP-M-A-70	1	1548.88	1516.36	36"
MP-M-A-71	1	1548.88	1516.36	36"
MP-M-A-72	1	1548.88	1516.36	36"
MP-M-A-73	1	1548.88	1516.36	36"
MP-M-A-74	1	1548.88	1516.36	36"
MP-M-A-75	1	1548.88	1516.36	36"
MP-M-A-76	1	1548.88	1516.36	36"
MP-M-A-77	1	1548.88	1516.36	36"
MP-M-A-78	1	1548.88	1516.36	36"
MP-M-A-79	1	1548.88	1516.36	36"
MP-M-A-80	1	1548.88	1516.36	36"
MP-M-A-81	1	1548.88	1516.36	36"
MP-M-A-82	1	1548.88	1516.36	36"
MP-M-A-83	1	1548.88	1516.36	36"
MP-M-A-84	1	1548.88	1516.36	36"
MP-M-A-85	1	1548.88	1516.36	36"
MP-M-A-86	1	1548.88	1516.36	36"
MP-M-A-87	1	1548.88	1516.36	36"
MP-M-A-88	1	1548.88	1516.36	36"
MP-M-A-89	1	1548.88	1516.36	36"
MP-M-A-90	1	1548.88	1516.36	36"
MP-M-A-91	1	1548.88	1516.36	36"
MP-M-A-92	1	1548.88	1516.36	36"
MP-M-A-93	1	1548.88	1516.36	36"
MP-M-A-94	1	1548.88	1516.36	36"
MP-M-A-95	1	1548.88	1516.36	36"
MP-M-A-96	1	1548.88	1516.36	36"
MP-M-A-97	1	1548.88	1516.36	36"
MP-M-A-98	1	1548.88	1516.36	36"
MP-M-A-99	1	1548.88	1516.36	36"
MP-M-A-100	1	1548.88	1516.36	36"

100' - INDICATES DISTANCE OF SERVICE LINE FROM DOWN STREAM MANHOLE.

