



ARKANSAS
Department of Environmental Quality

NPDES Small MS4 General Permit (ARR040000) Annual Reporting Form

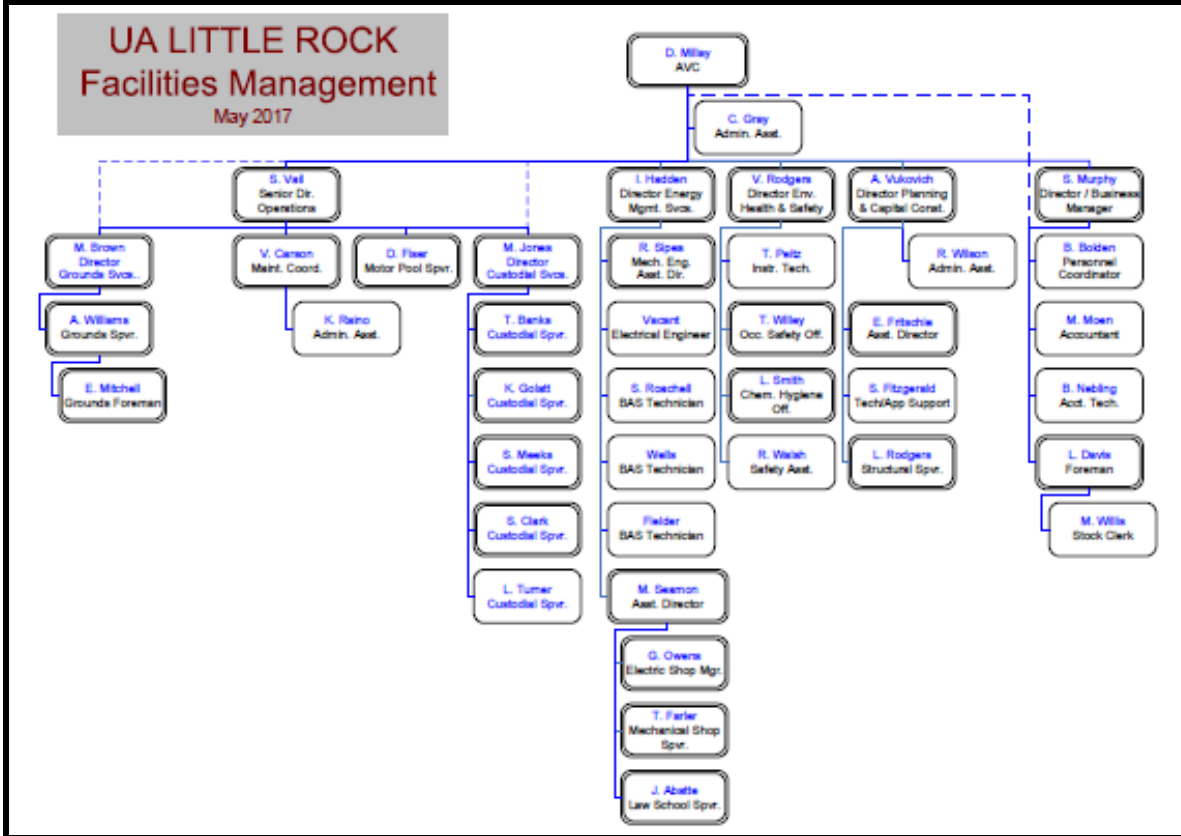
Instructions for completing this form:

- ARR040000 requires that this form be used when submitting annual reports. You may request approval to use your own reporting format.
- Annual Reports are due annually on or before June 1st.
- Complete the form and sign and date the certification statement below.
- If more space is needed than is provided, identify within the provided space that Attachment A, B, C, etc. has been attached.
- If an item of the form is not applicable for your program (such as street sweeping), fill in N/A in the space provided.
- Don't include attachments such as brochures, newspaper clips, sign-in sheets, etc. related to your program with this form. You only need to summarize these within this report. These records must be filed and will be needed during program audits.
- Please attach results of monitoring required for TMDL or impaired streams separately from this form.
- When complete, submit this Annual Report form to the following address:

ADEQ
Water Division
General Permits Section
5301 Northshore Drive
North Little Rock, AR 72118
Water-permit-application@adeq.state.ar.us

Small MS4 Annual Report for Year: 2017		
ADEQ Permit Tracking Number:ARR040020		
Name of MS4: University of Arkansas at Little Rock		
Primary Contact: Vince Rodgers		Title: Director of EHS & Chemical Hygiene
Mailing Address: 2801 S. University Ave		
City: Little Rock	Zip Code: 72204	County: Pulaski
Telephone Number: 501-371-7602	Email Address: varodgers@ualr.edu	

Include or attach a Table of Organization. Indicate who (name and contact information) is responsible for overall management and implementation of your program, and if different, each minimum control measure of your program. Identify how development and implementation across multiple positions, agencies and departments occur. Also, identify any Memorandum of Understandings (MOUs) or other such agreements that exist.



I certify under penalty of law that this document and all attachments were prepared under my direction or supervision in accordance with a system designed to assure that qualified personnel properly gather and evaluate the information submitted. Based on my inquiry of the person or persons who manage the system, or those persons directly responsible for gathering the information, the information submitted is, to the best of my knowledge and belief, true, accurate and complete. I am aware that there are significant penalties for submitting false information, including possibility of fine and imprisonment for knowing violations.

Print Name: Vince Rodgers

Print Title: Director of EHS & Chemical Hygiene

Signature: *Vince Rodgers*

Date: 5-30-18

SMALL MS4 ANNUAL REPORT FORM

PUBLIC EDUCATION & OUTREACH

Estimate Your Permit Area's Total Population: 12,000

BMP (mechanism) & Responsible Party	Measurable Goal	Theme or Message	Target Audience	% of Target Audience Reached & Total # of people reached	Summary of Results	Effective (Yes or No)
EHS Stormwater website. Vince Rodgers	Direct source for feedback from the community.	UALR is making a concerted effort to reduce runoff impact to adjacent waterways	Faculty, Staff, and students	0 hits to website – no comments	Expected	N/A-however, calls come to the operations center to report discharges. One call was received about Coleman Creek discoloration.
Coleman Creek Cleanup March 10, 2018 UA Agriculture / UA Little Rock / Keep Little Rock Beautiful	Cleanup effort to maintain Coleman creek cleanliness and prevent debris from entering the waterway.	Protect Coleman creek from pollution and beautify our natural landscape	Faculty, staff, and students	41	Those who participate are effective in removing any items that could be potentially harmful. Awareness is enhanced	
Trojan Refresh-Day of Service Student Affairs	Campus initiative to clean up grounds	Sustainability / Pollution	Faculty, staff, students	250	Target audience was engaged. Leaves, sticks, pine needles etc were collected.	Yes
Earth Day Celebration (Spring) and Campus Sustainability Day (Fall) Sustainability Committee	Collection of materials for recycling such as old tires, glass, plastic, aluminum, paper, batteries, computers, lamps, etc.	Sustainability / Pollution	Faculty, Staff, and students	All 12,000 campus emails are notified multiple times. Participation is not assessable but estimated at 10-15% or 1200 to 1800.	Between the two events we estimate collecting approx. 1500-2000 pounds of recyclable material	Yes
Campus Recycling Program Grounds Dept	Ongoing effort to collect and recycle paper, plastic, glass, and aluminum	Sustainability / Pollution	Faculty, staff, and students	Collection bins are placed in all buildings in multiple areas so individuals will have additional opportunities to recycle.	Custodians empty and replace the bins daily so evidence of use is prominent.	Yes
Hazardous waste MGMT through chemical hygiene program Vince Rodgers/Liz Smith	Reduce/eliminate spills of HazMat resulting in illicit discharges. Includes universal waste. Spill control plan is in development.	Exposure / Sustainability / Pollution	Faculty, staff, and students	Target audience is primarily chemical users so awareness is facilitated through policy and training. Approx 5000 individuals are informed about this matter	124 workers/students are trained through EHS. Policy is enforced by EHS affecting all faculty, staff, and students using HAZMAT	Yes

SMALL MS4 ANNUAL REPORT FORM

--	--	--	--	--	--	--

SMALL MS4 ANNUAL REPORT FORM

PUBLIC INVOLVEMENT/PARTICIPATION

BMP (Activity) & Responsible Party	Measurable Goal	Theme or Message	Target Audience	Estimate of People Participated	Summary of Results	Effective (Yes or No)
Coleman Creek Clean Up UA Agriculture / UA Little Rock / Keep Little Rock Beautiful Trojan Refresh-Day of Service Student Affairs	Removing any material that may result in illicit discharge. Collection of materials for recycling such as tires, glass, plastic, aluminum, paper, batteries, computers, lamps, books, etc.	Sustainability / Pollution Sustainability / Pollution	Faculty, staff, and students Faculty, staff, and students	291 1200-1500	Area cleaned and waste removed Collected roughly 1200-2000 lbs of recyclables	Yes Yes
Earth Day Celebration (Spring) and Campus Sustainability Day (Fall) Sustainability Committee/ Grounds Dept.						
UALR Recycling Program Sandra Vail	Collection of recyclables from campus bins, also glass, batteries, ballasts, lamps	Sustainability / Pollution	Faculty, staff, and students	Available bins in every building to all users 12,000 plus	Estimated waste collection over 100,000 lbs	Yes
Hazardous Waste MGMT program Vince Rodgers	HazMat pickup and collection of chemical waste and used oil for Lab-Pak disposal. Proper storage procedures.	Safety / Sustainability / Pollution	Faculty, staff, and students	~500	Various chemical and biological wastes collected, stored, and properly, disposed of. Includes used oil.	Yes
Housing move-out day Housing Director	Goods are recycled through donation and put to use instead of discarding	Sustainability / Helping those in need	Students	500-800	Amounts not available	Yes



ARKANSAS
Department of Environmental Quality

SMALL MS4 ANNUAL REPORT FORM

--	--	--	--	--	--	--

SMALL MS4 ANNUAL REPORT FORM

ILLCIT DISCHARGE DETECTION & ELIMINATION (IDDE)

BMP & Responsible Party	Measurable Goal	Completed (Yes or No)	Cite Local Code(s) Being Used (If available, web link for code(s))	Summary of Results or Activities		Effective (Yes or No)	
Ordinance or Other Regulatory Mechanism	Minimize or eliminate the potential for illicit discharges.	Complete	ADEQ Reg 6 – where applicable http://www.adeg.state.ar/water/regulations.htm EPA-40 CFR 122.26	Collection of HazMat and through EHS personnel efforts facilitates the transfer of awareness and knowledge that ultimately reduces opportunities for discharge.		Yes	
Hazardous Material MGMT, discharge monitoring, SWMP Vince Rodgers							
BMP & Responsible Party	Measurable Goal	Completed (Yes or No)	Summary of Activities or Updates			Effective (Yes or No)	
Storm Sewer System Map	ID flow patterns & outflows	Yes	Map created which IDs outfalls. Elevations ID through PAGIS online.			Yes	
Spill Prevention Control & Countermeasure Plan	Elimination and mitigation of spills	Yes	Comprehensive spill control plan to mitigate illicit spills and discharges			Yes	
BMP & Responsible Party	Measurable Goal	Completed (Yes or No)	Summary of Activities or Updates			Effective (Yes or No)	
IDDE Plan/Sampling	SWMP maintenance. Identify abnormal parameters in Coleman Creek	Yes SWMP – No Sampling	The UALR SWMP is on line and available for anyone to review at http://ualr.edu/facilities/home/environmental-health-safety/policies-procedures/environmental-protection/stormwater-management-plan/ . Campus is continually monitored for illicit discharges. Sampling to begin in 2018.			Yes	
Vince Rodgers							
BMP & Responsible Party	Measurable Goal	Completed (Yes or No)	# of Outfalls Screened	# of Dry-Weather Flows Identified	# Of Illicit Discharges:		Effective (Yes or No)
Dry-Weather Screening of Outfalls # of Outfalls Screened <u>28</u> Total # of Outfalls <u>28</u>	Notification and quick response	Yes	28	0	Identified*	Eliminated	Yes
					0	0	
Vince Rodgers							
BMP & Responsible Party	Measurable Goal	Completed (Yes or No)	Summary of Activities or Updates			Effective (Yes or No)	
Identification of allowable non-stormwater discharges	Reduce runoff from non-rain events	Yes	Restrict and monitor allowable discharges. No illicit discharges were identified			Yes	
Surveillance as needed EHS							

*Include an attachment which provides schedules for elimination of illicit connections that have been identified but have yet to be eliminated.

SMALL MS4 ANNUAL REPORT FORM

CONSTRUCTION SITE RUNOFF CONTROL

BMP & Responsible Party	Measurable Goal	Completed (Yes or No)	Cite Local Code(s) Being Used (If available, web link for code(s))		Summary of Results or Activities	Effective (Yes or No)	
Ordinance or Other Regulatory Mechanism	Contractor management through SWMP – site assessment and control maintained	Yes	ADEQ Reg 6 – Construction SW program		Minimized erosion and runoff through SWPPP maintenance and monitoring.	Yes	
SWMP – Vince Rodgers							
BMP & Responsible Party	Measurable Goal	Completed (Yes or No)	Standards Being Used		Summary of Results or Activities	Effective (Yes or No)	
Sediment and Erosion Control Requirements	Reduce opportunity for runoff and erosion	Yes	ADEQ Reg 6		Monitor and assess contractors BMPs and methods	Yes	
SWMP – Vince Rodgers							
BMP & Responsible Party	Measurable Goal	Completed (Yes or No)	Complaints		Summary of Results or Activities	Effective (Yes or No)	
			Received	Followed-Up On			
Complaint Process	Operations center notification-actions dictated by EHS for correction	Yes	1	1	STAA not established by contractor. Immediate stoppage of activity until STAA approved.	Yes	
FM Operations Center							
BMP & Responsible Party	Measurable Goal	Completed (Yes or No)	# of Applicable Sites Requiring Plans	# of Plans Reviewed	Summary of Results or Activities	Effective (Yes or No)	
Site Plan Review Procedures	Reduction in erosion & runoff opportunity	Yes	1	1	Automatic coverage SWPPP Wingate Art & Design submitted, accepted, and monitored	Yes	
SWPPP Review Vince Rodgers							
BMP & Responsible Party	Measurable Goal	Completed (Yes or No)	Site Inspections Performed			Summary of Results or Activities	Effective (Yes or No)
			# of Applicable Sites	# Performed	Avg. Frequency		
Site Inspection Procedures	Maintain BMPs by routine inspection	Yes	1	4	3 mo	No major issues detected	Yes
SWPPP Contractor & EHS							
BMP & Responsible Party	Measurable Goal	Completed (Yes or No)	Violations		Summary of Results or Activities	Effective (Yes or No)	
			# of Violation Letters	# of Enforcement Actions			
Enforcement Procedures	Deter illicit discharge	Yes	0	0	N/A	Yes	
SWMP – Public Safety	Reported Violations						

*Include an attachment which identifies applicable sites within your jurisdiction for this reporting period.

SMALL MS4 ANNUAL REPORT FORM

POST-CONSTRUCTION STORM WATER MANAGEMENT IN NEW DEVELOPMENT AND REDEVELOPMENT

BMP & Responsible Party	Measurable Goal	Completed (Yes or No)	Cite Local Code(s) Being Used (If available, web link for code(s))		Summary of Results or Activities	Effective (Yes or No)
Ordinance or Other Regulatory Mechanism	Effectiveness of regulations	Yes	ADEQ Reg 6		All construction projects are maintained and brought to acceptable conditions during and after construction phase by inspection. Landscaping. Grounds crews maintain the areas from that point.	Yes
SWMP, SWPPP Review - EHS						
BMP & Responsible Party	Measurable Goal	Completed (Yes or No)	Structural and/or Non-Structural Standards Being Used		Summary of Results or Activities/Compliance rates with MS4 requirements	Effective (Yes or No)
Post-Construction Requirements	Qualify that BMPs were effective by previous inspections and outfall reports.	Yes	Applicable ASTM/ANSI Standards		Final acceptance based on completeness of drainage systems and landscaping areas.	Yes
Final Review SWPPP - EHS						
BMP & Responsible Party	Measurable Goal	Completed (Yes or No)	# of Applicable Sites Requiring Post-Const. BMPs	# of Plans Reviewed	Summary of Results or Activities	Effective (Yes or No)
Site Plan Review Procedures	Site plan effectiveness over project duration	Yes	1	1	All site plans are reviewed prior to and post construction for implementation of SWPPP in accordance with the UALR SWMP. EHS works with contractors to assure proper stormwater management and completion of satisfactory measures to ensure long term SWMP goals	Yes
SWPPP – Vince Rodgers						
BMP & Responsible Party	Measurable Goal	Completed (Yes or No)	Site Inspections Performed		Summary of Results or Activities	Effective (Yes or No)
			# Performed	Avg. Frequency		
Site Inspection Procedures	Final review of site plan and drainage	Yes	1	1	Project SWPPP closed out, accepted	Yes
SWPPP - EHS						
BMP & Responsible Party	Measurable Goal	Completed (Yes or No)	Violations		Summary of Results or Activities	Effective (Yes or No)
			# of Violation Letters	# of Enforcement Actions		
Enforcement Procedures	Number of reported violations, spills, illicit discharges	Yes	0	0	N/A	Yes
EHS – Public Safety						
BMP & Responsible Party	Measurable Goal	Completed (Yes or No)	# of Sites Requiring Plans/Agreements	# of Plans Developed/Agreements in Place	Summary of Results or Activities	Effective (Yes or No)
Long-Term O&M Plans/Agreements			0	0		

SMALL MS4 ANNUAL REPORT FORM

POLLUTION PREVENTION/GOOD HOUSEKEEPING FOR MUNICIPAL OPERATIONS

BMP & Responsible Party	Measurable Goal	Completed (Yes or No)	Topic(s)	Targeted Audience	# of Employees Attended	Summary of Activity	Effective (Yes or No)
Training Program SPCC Plan	Elimination/mitigation of spills	Yes	BBP, SDS, Haz Waste, spill prevention, & Chemical Hygiene	Employees / students	200+	Online and lecture	Yes
UALR-EHS-Teaching units where HazMat is used							
List of Municipal Facilities Subject to Program					O&M Procedures Developed for Facilities (Yes or No)	# of Facility Inspections Performed	Frequencies of Such Inspections
N/A					N/A	N/A	N/A
MS4 Maintenance	Summarize Maintenance Activities and Schedules			Summarize Activities Performed			
	The reporting period involved maintenance of existing green space weekly, collecting trash daily, vehicle maintenance, minor spill cleanup, etc.			Same			
Disposal of Wastes	Procedures Developed (Yes or No)		Document Amounts of Wastes Properly Disposed				
	Yes		Approx 25,000 yards + 2 Lab Packs ~1000 lbs				
Road Salt	Covered (Yes or No)		Tons Used	Summarize Measures Taken to Minimize Usage			
	Yes		0	Approx. 10,000 lbs of Safe-Step ice melt used in 2017			
Pesticide & Herbicide Usage	Procedures Developed (Yes or No)		Gallons Used	Summarize Measures Taken to Minimize Usage			
	Yes		30 lbs dry 18 gal wet	New procedure and material, reduces need			
Fertilizer Usage	Procedures Developed (Yes or No)		Pounds Used	Summarize Measures Taken to Minimize Usage			
	Yes		~5000 lbs	Used as needed			
Street Sweeping	Procedures Developed (Yes or No)		Document Amount of Material Collected and Properly Disposed				
	No		Street sweeper is inoperable. Waste is collected by hand as necessary.				
Flood Management Projects	Summarize any New or Existing Flood Management Projects that were Assessed for Impacts on Water Quality						

SMALL MS4 ANNUAL REPORT FORM

	No flood management projects at this time
--	---

SMALL MS4 ANNUAL REPORT FORM

PROPOSED CHANGES TO YOUR SWMP (IF ANY)

- Summarize any proposed changes to your SWMP, including changes to any BMPs or any identified measurable goals that apply to the program elements. If you fail to satisfy measurable goals for the reporting year, please explain why.

None

VARIANCES GRANTED (IF ANY)

- Identify and summarize any variances granted under your storm water program.

None