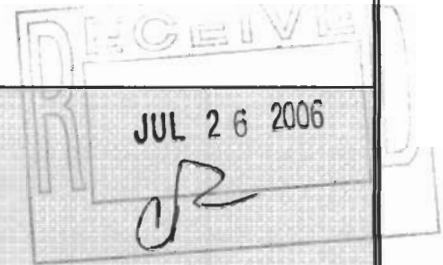


Arkansas Department of Environmental Quality  
 NPDES Branch, Water Division  
 P. O. Box 8913  
 Little Rock, AR 72219  
 (501) 682-0622



AFIN # \_\_\_\_\_

**NOTICE OF INTENT  
 CAR, TRUCK, AND/OR HEAVY EQUIPMENT WASHES  
 GENERAL PERMIT ARG750000**

ARG7500


91

1. Legal Name of Applicant: Twin Lakes Enterprises, Inc.	2. Name of Facility: Patriot Car Wash
3. Applicant Legal Address: Post Office Box 584	4. Facility Physical Location: 4756 Highway 62 East
5. Applicant City, State, Zip: Mountain Home, Arkansas 72654	6. Facility City, State, Zip: Mountain Home, Arkansas 72653
7. Applicant Telephone Number: (870) 421-2504	8. Facility Telephone Number: (870) 492-6684
9. Owner Type (circle one): (Note Certification) pri fed public state corp other-(describe)	10. Facility Contact Person and Telephone: Shane Davis, (870) 421-2504
11. Permit, DMR, and invoice send to:	12. Facility Mailing Name:
ATTN: Shane Davis	ATTN: Shane Davis
Address: Post Office Box 584	Address: Post Office Box 584
City: Mountain Home	City: Mountain Home
State: Arkansas Zip: 72654	State: Arkansas Zip: 72654
13. Owner Name: Twin Lakes Enterprises, Inc.	14. Cognizant Official: Shane Davis
Address: Post Office Box 584	Cognizant Title: Secretary/Treasurer
City: Mountain Home	Cognizant Telephone: (870)421-2504
State: Arkansas Zip: 72654	16. Facility Latitude: 36° 22' 33" Longitude: 92° 18' 48"
15. Facility SIC Codes: (a) 7542 (Car wash) Type of Business: Car Wash	17. Additional Facility Location Information: (a) Section: 30 Township: 20N Range: 12W (b) County: Baxter

**OUTFALL INFORMATION :**

1. Outfall Number: 001	2. Outfall Number: 002
(a) Stream Segment: Planning Segment 4F - Reach 020	(a) Stream Segment:
(b) Hydrologic Basin Code: 11010006	(b) Hydrologic Basin Code:
(c) Outfall Latitude: 36° 22' 33" Longitude: 92° 18' 48"	(c) Outfall Latitude: Longitude:
(d) Section: 30 Township: 20N Range: 12W	(d) Section: Township: Range:
(e) County: Baxter	(e) County:



3. Flow (actual or projected): <u>0.001</u> MGD	4A. Construction Permit Number: <u>None</u> Date Issued: _____ 4B. Type of treatment system: <u>Sedimentation with fixed film biological wastewater recycle recycle system.</u> (See enclosed info.)
5. Name of Receiving Stream: <u>Mallard Point Road ditch, thence north to unnamed tributary of Norfolk Lake.</u>	
6. Facility has Individual NPDES Permit: (circle one) YES <input type="radio"/> <b>NO</b> <input checked="" type="radio"/> If Yes Permit Number: _____	
7. Applicant has previously submitted, or has on file with this Department, a complete Disclosure Form as required by Act 454 of 1991: If YES, date submitted: _____ Division: _____ If NO, Submit a Disclosure Form. Please see the enclosed Disclosure Form.	
<b>CERTIFICATION</b>	
<p>"I certify that, if this facility is a corporation, it is registered with the Secretary of the State of Arkansas."</p> <p>"I certify that the facility was issued a construction permit by this Department, following a satisfactory review of plans and specifications of the treatment system."</p> <p>"I certify that the cognizant official designated in this Application is qualified to act as a duly authorized representative under the provisions of 40 CFR 122.22(b). If no cognizant official has been designated, I understand that the Department will accept reports signed only by the Applicant. I certify under penalty of law that this document and all attachments were prepared under my direction or supervision in accordance with a system designed to assure that qualified personnel properly gather and evaluate the information submitted. Based on my inquiry of the person or persons directly responsible for gathering the information, the information submitted is, to the best of my knowledge and belief, true, accurate, and complete. I am aware that there are significant penalties for submitting false information, including the possibility of fine and imprisonment for knowing violations."</p>	
Typed or Printed Name: <u>Shane Davis</u>	Title: <u>Secretary/Treasurer</u>
Signature: 	Date: <u>2-20-2006</u>

complete data system 8/9/06



PM

**Engineering, Compliance & Construction, Inc.**

415 North McKinley Street, Suite 1180 • Little Rock, Arkansas 72205 • Phone 501.663.8247 • Fax 501.664.5005 • www.ecci.com

July 24, 2006

Mr. Parviz Mokhtari  
Arkansas Department of Environmental Quality  
NPDES, Water Division  
Post Office Box 8913  
Little Rock, Arkansas 72219-8913

JUL 26 2006

A handwritten signature in black ink, appearing to be 'AR', is written over a horizontal line that is part of a rectangular stamp or box.

**RE: Notice of Intent for General Permit ARG750000  
Twin Lakes Enterprises, Inc. - Patriot Car Wash  
Mountain Home, Arkansas**

Mr. Mokhtari:

Thank you for reviewing and approving the request to allow Twin Lakes Enterprises to apply for the General Permit ARG750000 for the Patriot Car Wash facility in Mountain Home. As requested, I have enclosed the original signed copies of the Notice of Intent and the Disclosure Statement, the topographic map of the site showing the location of the discharge point, and a copy of the original \$200 check submitted to ADEQ.

I appreciate all of your help during this permitting process. If you have any questions or concerns please contact me at (501) 663-8247. Thank you for your time and review of this application.

Sincerely,

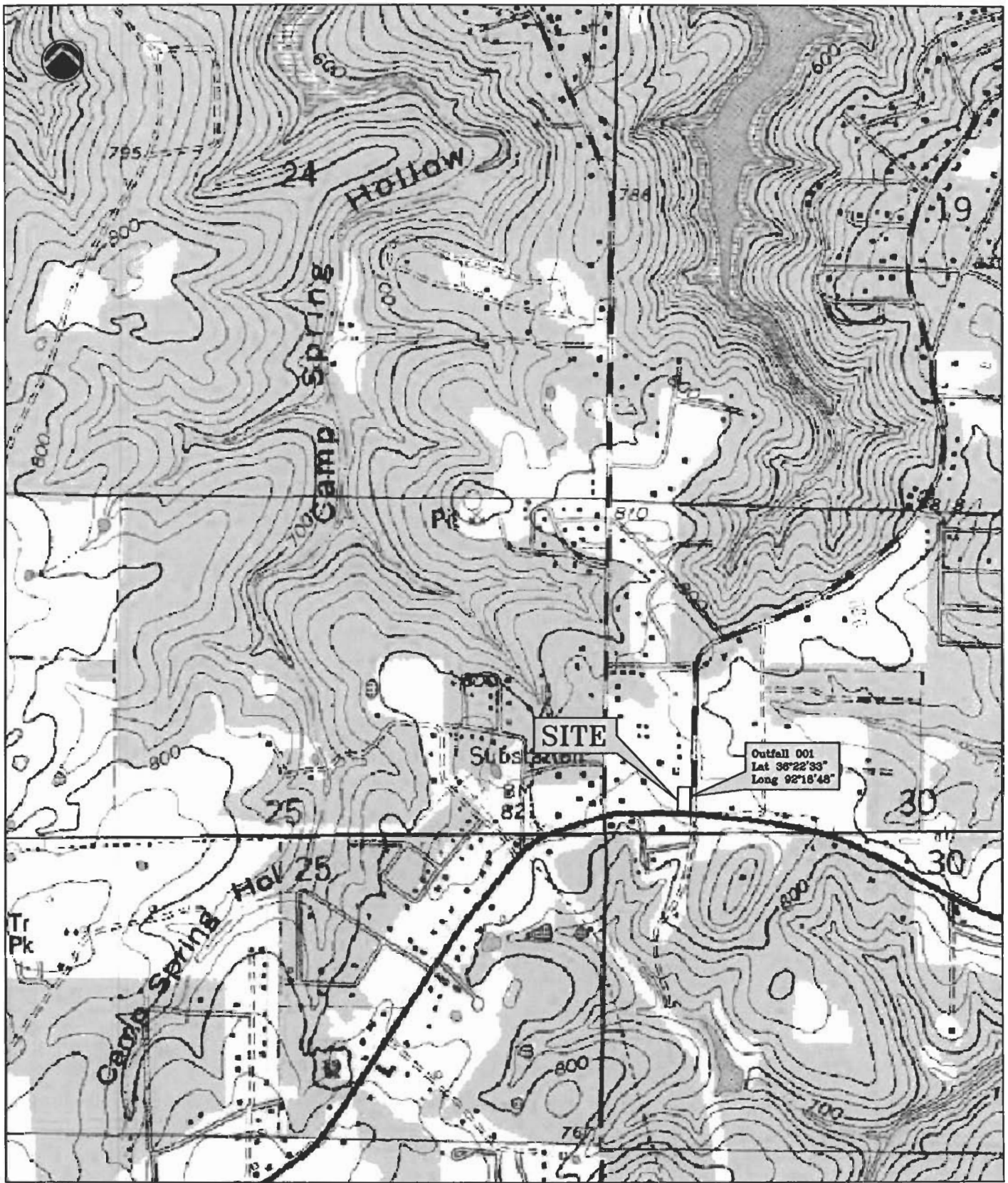
ECCI

A handwritten signature in black ink that reads 'Andrew Rike'.

Andrew Rike, P.E.  
Civil Engineer

Enclosure





**ECC**  
 Engineering, Construction  
 & Construction, Inc.  
 416 NORTH MIDWAY STREET  
 SUITE 3100  
 LITTLE ROCK, ARKANSAS 72206  
 (501) 652-2007

MOUNTAIN VIEW

ARKANSAS

# PATRIOT CAR WASH

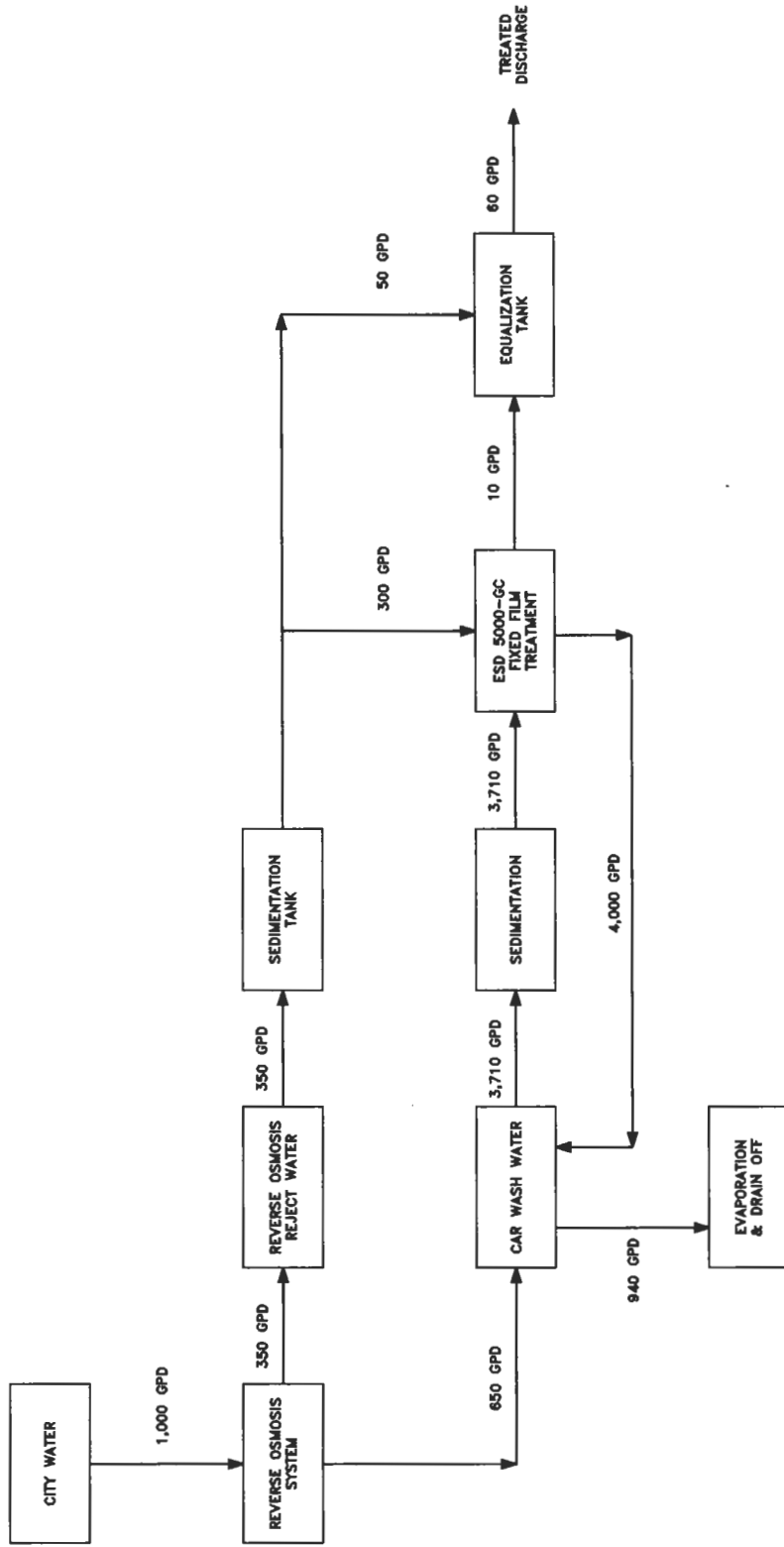
VACINITY TOPOGRAPHIC MAP

SCALE	NONE
DATE	MARCH 2006
PROJECT NO.	4420-3001

SHEET 1 OF 1





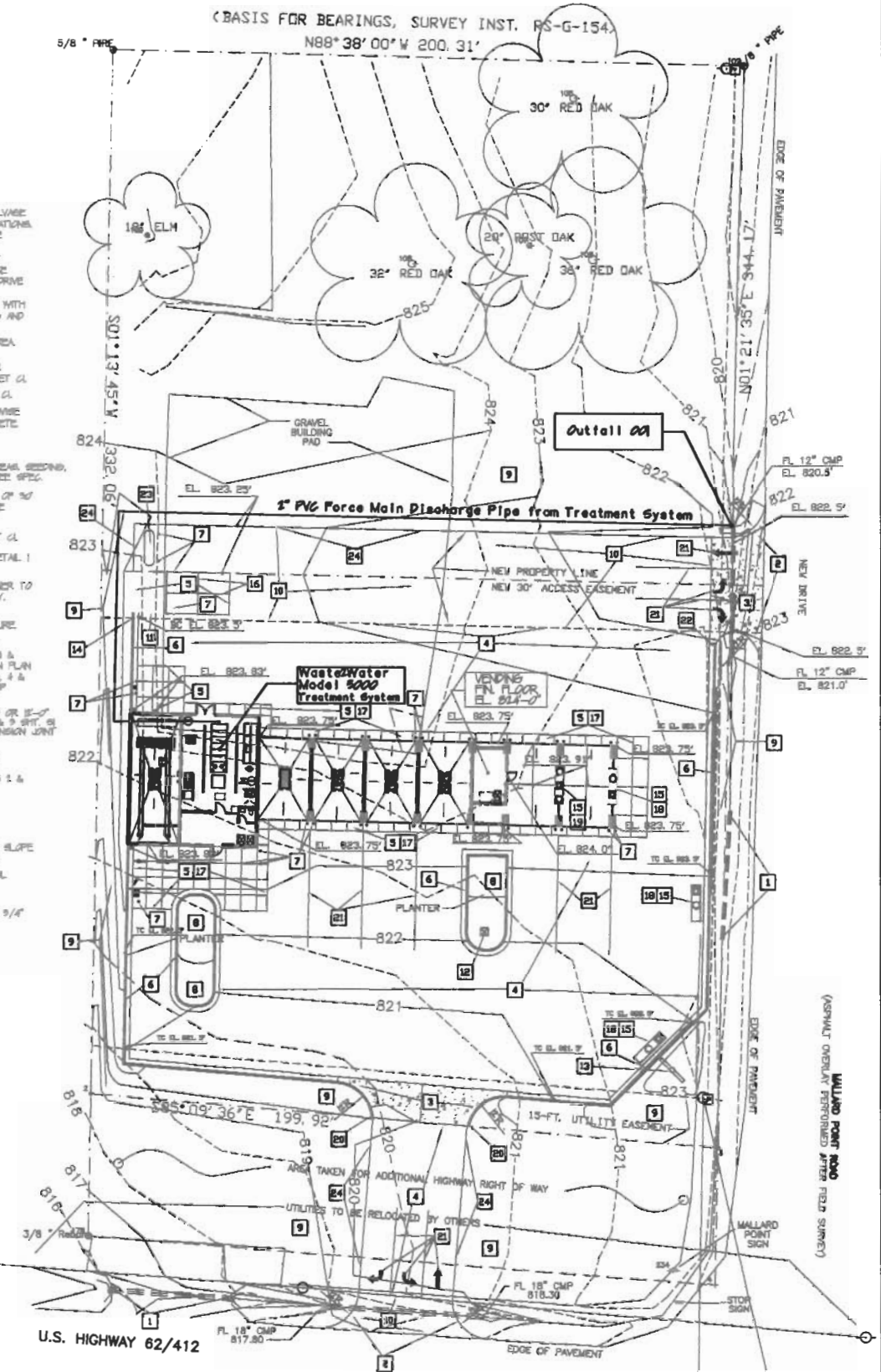


PROCESS FLOW DIAGRAM



(BASIS FOR BEARINGS, SURVEY INST. RS-G-154)  
 N88°38'00"W 200.31'

- 1 REMOVE AND DISCARD EXISTING ENTRANCE DRIVE. SALVAGE 18" CMP AND 12" CMP. RELOCATE TO NEW DRIVE LOCATIONS. PROVIDE ADDITIONAL MATCHING CMP SECTIONS TO MAKE EXISTING 40' LENGTH TO BE 30'-0"
- 2 REMOVE AND DISCARD REQUIRED SECTION OF STREET SHOULDER AS NECESSARY TO INSTALL NEW ENTRANCE DRIVE PER CITY AND STATE REQUIREMENTS. OBTAIN DRIVE PERMIT AS REQUIRED.
- 3 NEW MONOLITHIC CONCRETE APRON TO BE 8" THICK WITH 48 DARS @ 18" BA WAY OR FIBERGLASS REINFORCING AND TOOL CONTROL JOINT @ MID-POINT OF APRON.
- 4 5' ASPHALT PAVEMENT ON 6" BASE ROCK IN THIS AREA. SEE DETAIL 4 SHEET CL.
- 5 4" CONCRETE PAVEMENT WITH 48# WELLSVILLE WMM OR FIBERGLASS ON 4" CRUSHED ROCK. SEE DETAIL 1 SHEET CL.
- 6 CONCRETE CURB AND GUTTER. SEE DETAIL 5 SHEET CL.
- 7 6" DIA. X 4'-0" ABOVE FINISH GRADE (UNLESS OTHERWISE INDICATED) STEEL PIPE DOLLARD FILLED WITH CONCRETE. PAINT. SEE DETAIL 5 SHEET CL.
- 8 PLANTER AREAS BACKFILL WITH 12" MIN. TOPSOIL.
- 9 PROVIDE A MIN. OF 4" TOPSOIL IN ALL DISTURBED AREAS. SEEDING, MULCH & SOIL FURNISHED & INSTALLED BY OWNER. SEE SPEC.
- 10 HEAVY ASPHALT PAVEMENT FULL LENGTH AND WIDTH OF 30' ACCESS EASEMENT AND NEW ENTRANCE HWY. AL. SEE DETAIL 7 SHEET CL.
- 11 DUMPSTER ENCLOSURE. SEE DETAILS 3, 9 & 4 SHEET CL.
- 12 FLAG POLE AND CONCRETE BASE BY OWNER. SEE DETAIL 1 SHEET A FOR FLAG POLE/CONCRETE BASE.
- 13 SITE SIGNAGE AND CONCRETE BASE BY OWNER. OWNER TO OBTAIN ANY REQUIRED SIGN PERMITS FROM THE CITY. VERIFY LOCATION AND CONFORM UTILITY LOCATIONS.
- 14 TERMINATE CONCRETE CURB INTO DUMPSTER ENCLOSURE.
- 15 VACUUM ISLAND EQUIPMENT FURNISH & INSTALLED BY OWNER'S EQUIPMENT SUPPLIER. ISLAND CONSTRUCTION & HOOR-UP BY GENERAL CONTRACTOR. SEE FOUNDATION PLAN 7 SHIT. 9 & FLOOR PLAN 2 & 3 AND ELEVATIONS 3, 4 & 4 ON SHEET A1 REFER TO MEP AND EQUIPMENT SHOP DRAWINGS FOR HOOR-UP REQUIREMENTS.
- 16 CONCRETE PAVEMENT CONTROL JOINTS AS INDICATED OR 12'-0" O.C. EACH WAY. SEE DETAIL 1 SHIT. CL OR DETAIL 5 & 9 SHIT. 9 FOR CONTROL JOINT AND CONCRETE PAVEMENT EXPANSION JOINT @ 40'-0" MAX.
- 17 CONCRETE PAVEMENT CONTROL JOINTS AT 5'-0" AND EXPANSION JOINTS @ 30'-0" O.C. AT PERIMETER OF BUILDING UNLESS OTHERWISE INDICATED. SEE DETAILS 1 & 9 SHEET CL.
- 18 SINGLE VACUUM UNIT ISLAND. SEE PLAN 9 SHIT. A1.
- 19 DOUBLE VACUUM UNIT ISLAND. SEE PLAN 3 SHIT. A1.
- 20 STOP 4" CONCRETE CURB AND GUTTER AT R/W AND SLOPE CURB BACK AWAY FROM R/W 5/4" TO 1" PER FOOT.
- 21 4" W/CE PAINTED STRAKING STRIPING AND DIRECTIONAL ARROWS.
- 22 STOP 4" CONCRETE CURB AND GUTTER BACK FROM ENTRANCE. SLOPE CURB END AWAY FROM ENTRANCE 5/4" TO 1" PER FOOT.
- 23 PROPANE TANK BY OWNER.
- 24 EDGE OF PAVEMENT.



**ECC**  
 Engineering, Compliance  
 & Construction, Inc.  
 416 NORTH WOODLEY STREET  
 SUITE 1100  
 LITTLE ROCK, ARKANSAS 72601  
 (501) 582-8287

**PATRIOT CAR WASH**

**FACILITY SITE PLAN WITH DISCHARGE PIPING**

SCALE :  
NONE  
DATE: MARCH 2006  
PROJECT NO: 4480-3001  
SHEET 1 OF 1

ARKANSAS



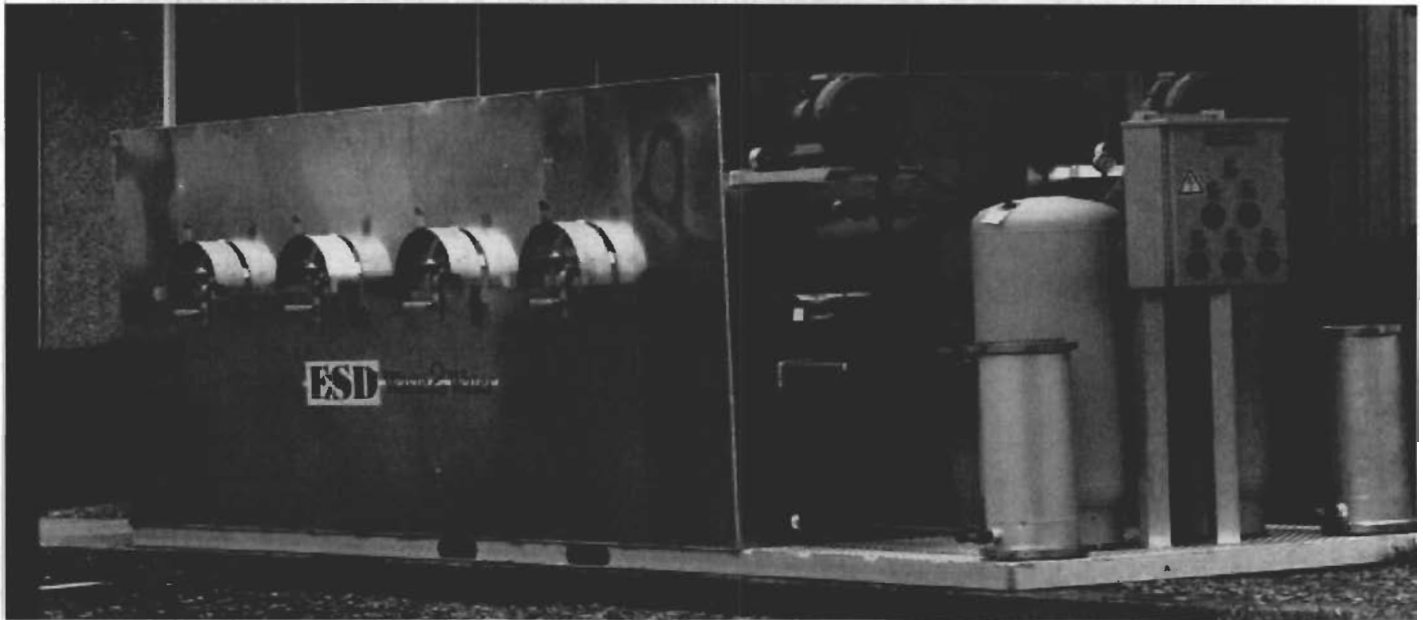
**Twin Lakes Enterprises, Inc.**  
**Patriot Car Wash – Mountain Home, Arkansas**

**Attachment B**  
**Treatment System Vendor Information**



**I/C Series**

**ESD Waste2Water, Inc.**



**United States Patent # 6,303,025**

**Model 5000  
Closed Loop System  
ESD Waste2Water  
Treatment**

Is a fixed film biological wastewater recycle system for wash water generated from the routine cleaning and degreasing operations.

The Waste2Water systems use a proprietary blend of engineered aerobic microbes for the assimilation of pollutants in the wash water.

The microbes breakdown organic pollutants including oil, grease, antifreeze, gasoline, MTBE, benzenes, detergents etc. Through assimilation these microbes convert organic pollutants into harmless carbon dioxide and simple water.

**Specifications**

Flow Range	0-50 GPM
Daily Throughput	6,050 GPD
Media Area	5,530 ft <sup>2</sup>
Air Injection	12 Micro Diffusers
Aerification	110 SCFM @ 40 CIW
Power Requirement	230 Volt 30 AMP
Length	16 Feet
Width	5 Feet
Height	5 Feet
Weight	1,700 LB

**System  
Enhancements**

Solids Separator  
High Pressure Washers  
Retractable Hose Stations  
Self Cleaning Collection Sumps

**ESD Waste2Water, Inc.**

2140 NE 36th Avenue Bldg 100  
Ocala, Florida 34470  
Tel 352.867.7482 Fax 352.867.1320

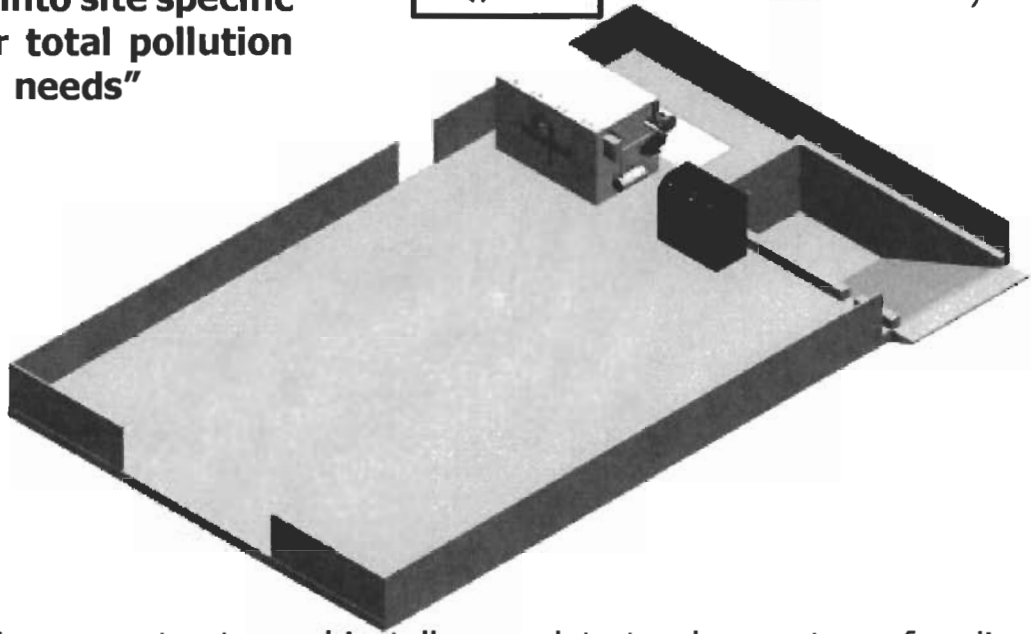
[www.waste2water.com](http://www.waste2water.com)





**"Value engineered systems integrated into site specific designs for total pollution prevention needs"**

**ESD Waste<sup>2</sup>Water, Inc.**



ESD designs, constructs, and installs complete turnkey systems for clients in the United States, Canada and Europe. We are the original fixed film microbe biological remediated wash water company. Since 1993 our patented process has produced the highest quality water with the lowest operational cost. When your project demands the best select the genuine ESD Waste2Water system, accept no substitutes.

### **Industrial /Commercial Applications**



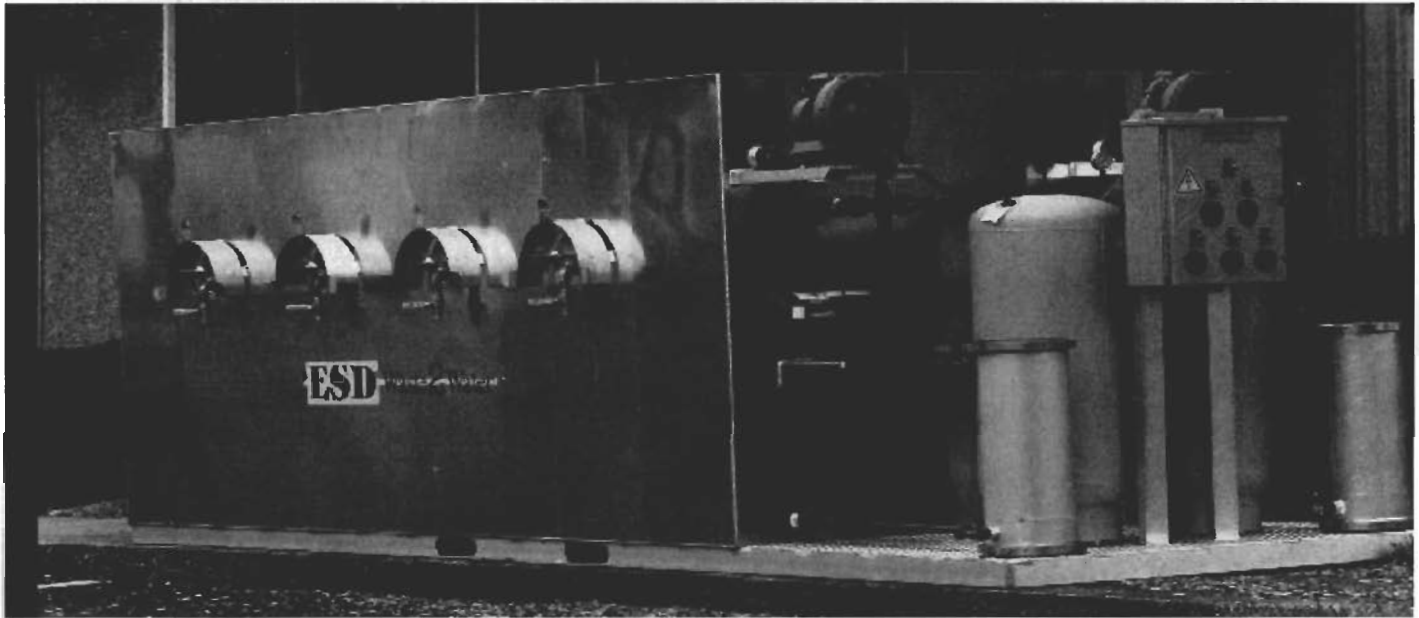
Fleet Maintenance  
Heavy Equipment  
Municipal  
Rental Yards  
Food Processing  
Car & Truck Washes  
Aircraft Maintenance



Genuine ESD Engineered  
Fixed Film Microbes Supplied  
Fresh Each Month







United States Patent # 6,303,025

## Specifications

### **Model 5000 GC-4 Closed Loop System Turf Applications ESD Waste2Water Treatment**

Is a fixed film biological wastewater recycle system for wash water generated from the routine maintenance of turf equipment.

The Waste2Water systems use a proprietary blend of engineered aerobic microbes for the assimilation of pollutants in the wash water.

The microbes breakdown organic pollutants including oil, grease, antifreeze, herbicides, pesticides, fungicides and detergents. Through the assimilation these microbes convert organic pollutants into harmless carbon dioxide and simple water.

Flow Range	0-50 GPM
Daily Throughput	6,050 GPD
Media Area	5,530 ft <sup>2</sup>
Air Injection	12 Micro Diffusers
Aerification	110 SCFM @ 40 CIW
Clipping Separation	432 in <sup>2</sup> Wedge Wire
Power Requirement	230 Volt 30 AMP
Wash Stations	4 @ 14.6 GPM Each
Length	16 Feet
Width	5 Feet
Height	5 Feet
Weight	1,700 LB

## **System Enhancements**

Solids Separator  
High Pressure Washers  
Clipping Collection Cart  
Retractable Hose Stations  
Self Cleaning Collection Sumps

ESD Waste2Water, Inc.  
12900 Automobile Boulevard Suite C & D  
Clearwater, Florida 33762  
Toll Free 877-499-5639  
Fax 727-299-9030  
[www.waste2water.com](http://www.waste2water.com)



"Integrated into the system designs for total pollution prevention needs"

## **ESD** Waste2Water, Inc.

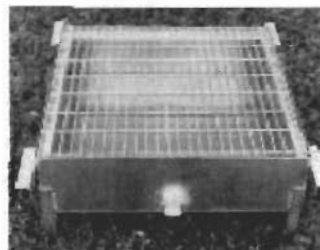
Designs, constructs, and installs complete turnkey systems for clients in the United States, Canada and Europe. We are the original fixed film microbe biological remediated wash water company. Since 1993 our patented process has produced the highest quality water with the lowest operational cost. When your project demands the best select the genuine ESD Waste2Water system, accept no substitutes.



Integrated Turf Application System  
Clipping Separator  
Solids Separator  
Clipping Cart

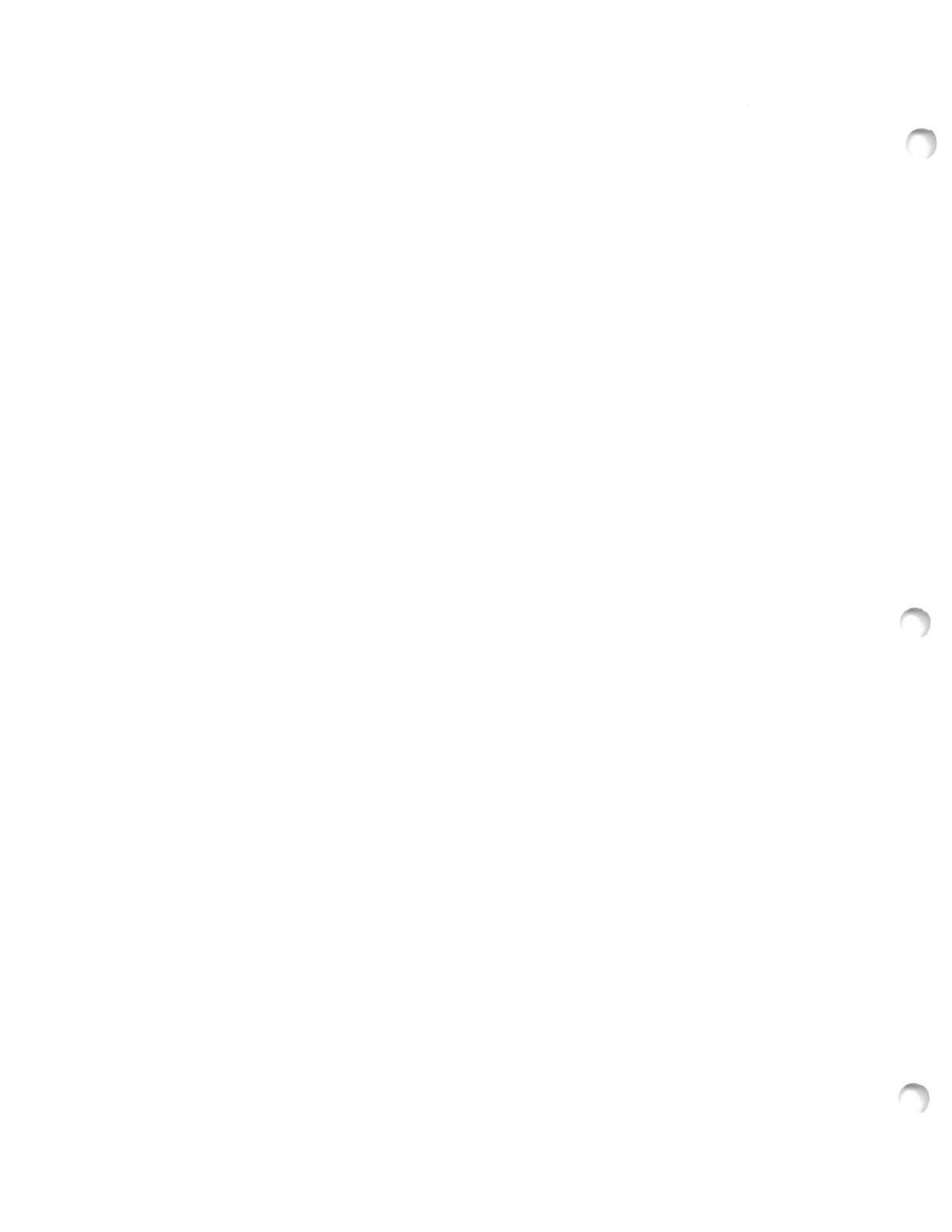


Prefabricated Inbeds for Turf Applications Make the Operation of the Wash Pad Neat, Clean and Low Maintenance

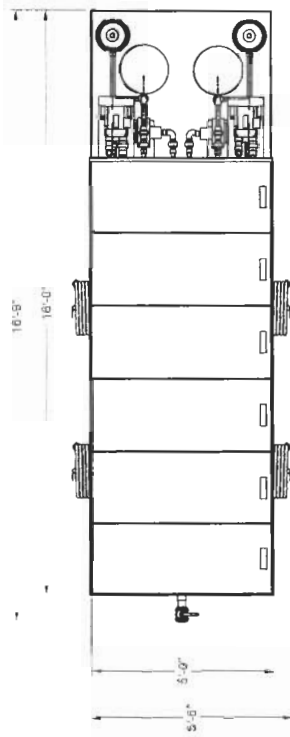


Genuine ESD Engineered Fixed Film Microbes Supplied Fresh Each Month

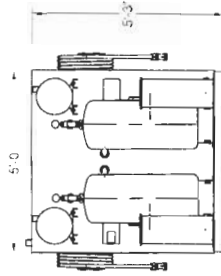
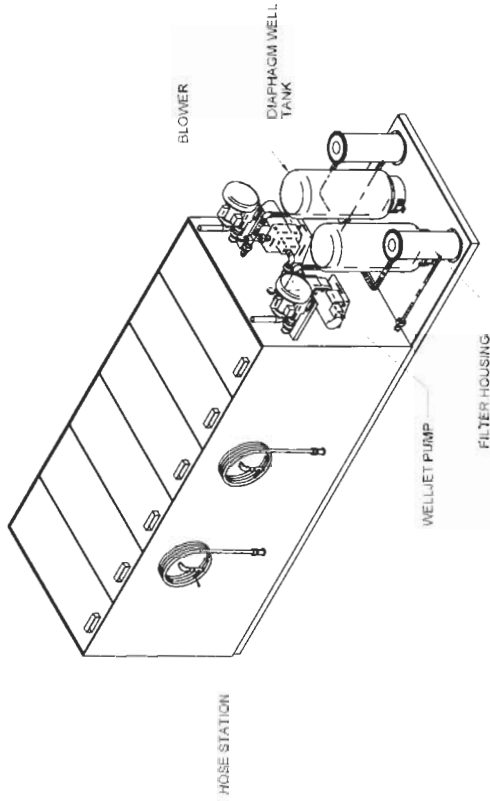
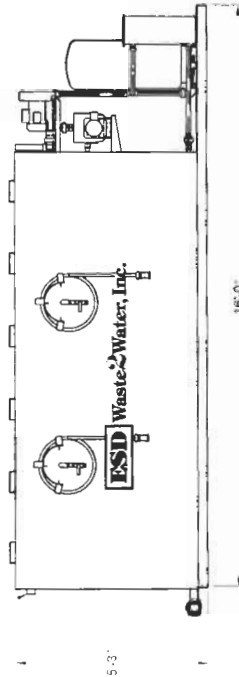




QUANTITY	DESCRIPTION
1	ESD 5000 GC-2 SYSTEM
1	2" BLACK BALL VALVE
4	3/4"x30' RED RUBBER HOSE
4	3/4" RED FOG NOZZLE
2	STARITE HNE PUMP ( WITH PIPING)
2	RESCHLE BLOWER (WITH PIPING)
1	1 1/2" SCH 80 MALE ADPT.
1	3/4" SCH 80 MALE ADPT
1	3/4" SCH 80 BALL VALVE SxS
1	3/4" SCH 80 ELBOW 90°



11.2. ALUO: HALF COUPLING



ALL IDEAS, DESIGNS AND PLANS INDICATED OR REPRESENTED BY THIS DRAWING ARE OWNED BY AND THE PROPERTY OF ESD. NO PART OF THIS DRAWING IS TO BE REPRODUCED, COPIED, OR USED IN ANY MANNER WITHOUT THE WRITTEN PERMISSION OF ESD. ANY REUSE OF THIS DRAWING FOR ANY PROJECT, NONE OF THE DEAS, DESIGNS OR PLANS SHALL BE USED OR DISCLOSED TO ANY PERSONS, FIRM OR CORPORATION FOR ANY PURPOSE WHATSOEVER WITHOUT THE WRITTEN PERMISSION OF ENVIRONMENTAL SYSTEM DESIGN, INC.

**ESD Waste2Water, Inc.**

12900 AUTOMOBILE BLVD. SUITE C & D  
CLEARWATER, FL 33762  
PHONE NO. TOLL FREE 877-499-5639  
FAX NO. 727-299-9030

ESD 5000 GC 2-2

DRAWN BY: J. ANDREWS  
DATE: 04/23/02  
UPDATE

SIZE: 1 OF 1  
PART NO.: 126  
SCALE: 1:40

SCALE VERIFICATION  
THIS BAR REPRESENTS ONE INCH ON ORIGINAL DRAWING  
USE TO VERIFY DRAWING

