

ARR040000 Recertification Notice of Intent for Regulated Small Municipal Separate Storm Sewer Systems (MS4s) General Permit

version 1.18

(Submission #: HQ4-NZGG-AQ82M, version 2)

Digitally signed by:
nform
DPEPORTALIIS.ADPCEDM2.state.ar.us
Date: 2024.09.03 16:18:01 -05:00
Reason: Copy Of Record
Location: North Little Rock, Arkansas



Details

AFIN 72-02164
Reference # ARR040049
Submission ID HQ4-NZGG-AQ82M
Submission Reason Renewal

CORRECTION REQUEST (CORRECTED)

Must be signed by responsible official (Mayor)

The renewal **MUST** be signed for by the RO. If The Mayor does not have an Electronic Signature Agreement, please revise the submission for Hard Copy Signing, as ESA approval can take over a month.
Created on 9/3/2024 3:13 PM by **Will Broshears**

Form Input

Permit Information

Recertification Instruction

Please review all fields carefully for typos or inaccurate information. If the information in the corresponding field is incorrect, please update the corresponding field with the correct information by typing over the existing information.

If the Permittee (Legal Name) changes, you will need to also submit a permit transfer form.

The update SWMP must be submitted in accordance with the permit.

Permittee (Legal Name)

The permittee means any person (an individual, association, partnership, corporation, municipality, state, or federal agency) who has the primary management and ultimate decision-making responsibility over the operation of a facility or activity.

Permit No.
ARR040049

AFIN
72-02164

Permittee (Legal Name)
City of Tontitown

Site Contact Person**Contact Person Information****First Name**

Angela

Last Name

Russell

Title

Mayor

Phone Type

Business

Number

479-361-2700

Extension**Email**

mayor@tontitownar.gov

Urbanized/Core Areas

Fayetteville-Springdale-Rogers

Receiving Stream

Brush Creek/Clear Creek

Is this MS4 identified on the list of the EPA approved Total Maximum Daily Loads (TMDL)?

No

From our database, the Responsible Official are listed in the following**Responsible Official First Name**

Angela

Responsible Official Last Name

Russell

Responsible Official Title

Mayor

Did the Responsible Official Change?

No

Please provide the Responsible Official Email Address

mayor@tontitownar.gov

From our database, the Cognizant Official are listed in the following**Cognizant Official First Name**

James

Cognizant Official Last Name

Clark

Cognizant Official Title

Pub. Works Dir.

Did the Cognizant Official Change?

No

Please provide the Cognizant Official Email Address

pwdirector@tontitownar.gov

Mailing Address

P.O. Box 305

Tontitown, AR 72770

Is the invoice address the same as the mailing address?

Yes

Attach Updated SWMP and Updated Storm Sewer System Map

Tontitown MS4 SWMP 2024.pdf - 06/26/2024 04:15 PM

Comment

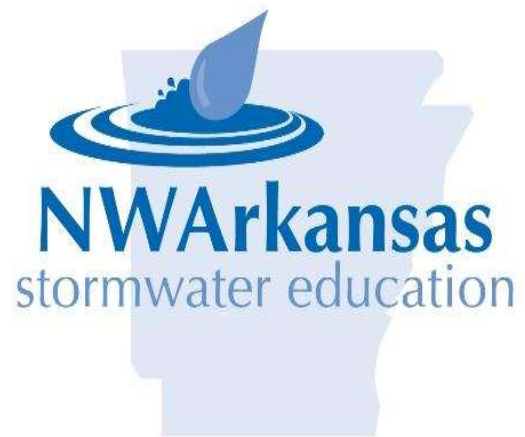
NONE PROVIDED

Revisions

Revision	Revision Date	Revision By
Revision 1	6/26/2024 11:22 AM	John Colby Marshall
Revision 2	9/3/2024 4:17 PM	John Colby Marshall

City of Tontitown

STORMWATER MANAGEMENT PLAN



Permit ARR040049

Written: June 2024

Table of Contents

Table of Contents	2
1. Background and Context:	3
2. Goals:	3
3. Description of the Permit Area:.....	4
4. City Stormwater Management Program - Responsible Parties:	6
5. NPDES Phase II BMP Requirements:.....	8
A. Minimum Control Measure #1: Public Education and Outreach on Stormwater Impacts ...	8
B. Minimum Control Measure #2: Public Involvement/Participation	10
C. Minimum Control Measure #3: Illicit Discharges Detection and Elimination.....	12
D. Minimum Control Measure #4: Construction Site Stormwater Runoff Control	19
E. Minimum Control Measure #5: Post-Construction Stormwater Management for New Development and Redevelopment	25
F. Minimum Control Measure #6: Pollution Prevention / Good Housekeeping for Municipal Operations	30
APPENDICES	35
Appendix A - Additional City of Tontitown Maps	36
Appendix B - Relevant City of Tontitown Municipal Ordinances.....	37
Appendix C - Educational Contract	38
Appendix D - Educational Contract's 5-year Task Plan and Targeted Quantities	40
Appendix E - Annual Reports to ADEQ with attached yearly total reports	43

CITY OF TONTITOWN

STORMWATER MANAGEMENT PLAN

1. Background and Context:

The Tontitown Stormwater Management Program (SWMP) has been developed to provide policy and management guidance for activities affecting stormwater throughout the City of Tontitown. The SWMP shall cover the term of the permit, reviewed annually, and updated as necessary, or as required. The City shall retain the SWMP development in accordance with Parts II and III for at least three (3) years after coverage under this permit terminates. It is intended to help the City fulfill certain State and Federal water quality requirements, and to meet local water resources management objectives. Through the implementation of the policies and management practices embodied in the Stormwater Program over time, Tontitown hopes to preserve urban stormwater quality that negatively impacts local rivers and streams, and to develop and preserve the urban drainage infrastructure in a manner that meets the community's needs for years to come. Implementation of the revised and updated SWMP may be achieved through participation with other permittees, public agencies or private entities in corporate efforts to satisfy the requirement of Part III of the permit. In implementing this SWMP, the City shall provide adequate finances, staff, equipment, and support capabilities to implement their activities under the SWMP to the maximum extent practicable (MEP).

While the State and Federal regulatory programs place significant emphasis on improving water quality and the health of Arkansas's watersheds, Tontitown, as part of the Illinois River Watershed further emphasizes the need for local management of urban stormwater and waterways. It becomes even more important that management of these resources occur in a manner that minimizes destructive long-term impacts to drainage infrastructure and the natural features that help protect water quality and control flooding.

Areas of focus:

1. Pollution incidents and unlawful (illicit) discharges to the City's stormwater drainage system.
2. On-site management of stormwater to reduce the quantity of stormwater and pollution entering the drainage system.
3. Reduction and prevention of pollution at City facilities and resulting from City activities and business practices.
4. Public education geared toward broad community stewardship of water resources.
5. Public awareness and involvement in the City's Stormwater management program.
6. ADEQ-required Municipal Separate Storm Sewer System (MS4) Program elements.

2. Goals:

The goals of the City of Tontitown's SWMP are to reduce discharge pollutants from the MS4 area to the MEP. This includes no discharge of toxics in toxic amounts; pollutants in quantities that would

cause a violation of the Arkansas Water Quality Standards; floatable debris; oils, scum, foam, and/or grease in other than trace amounts; any non-stormwater discharges from the MS4 (except as provided in Permit); nor any sediment from construction activities into the MS4.

Additional goals include:

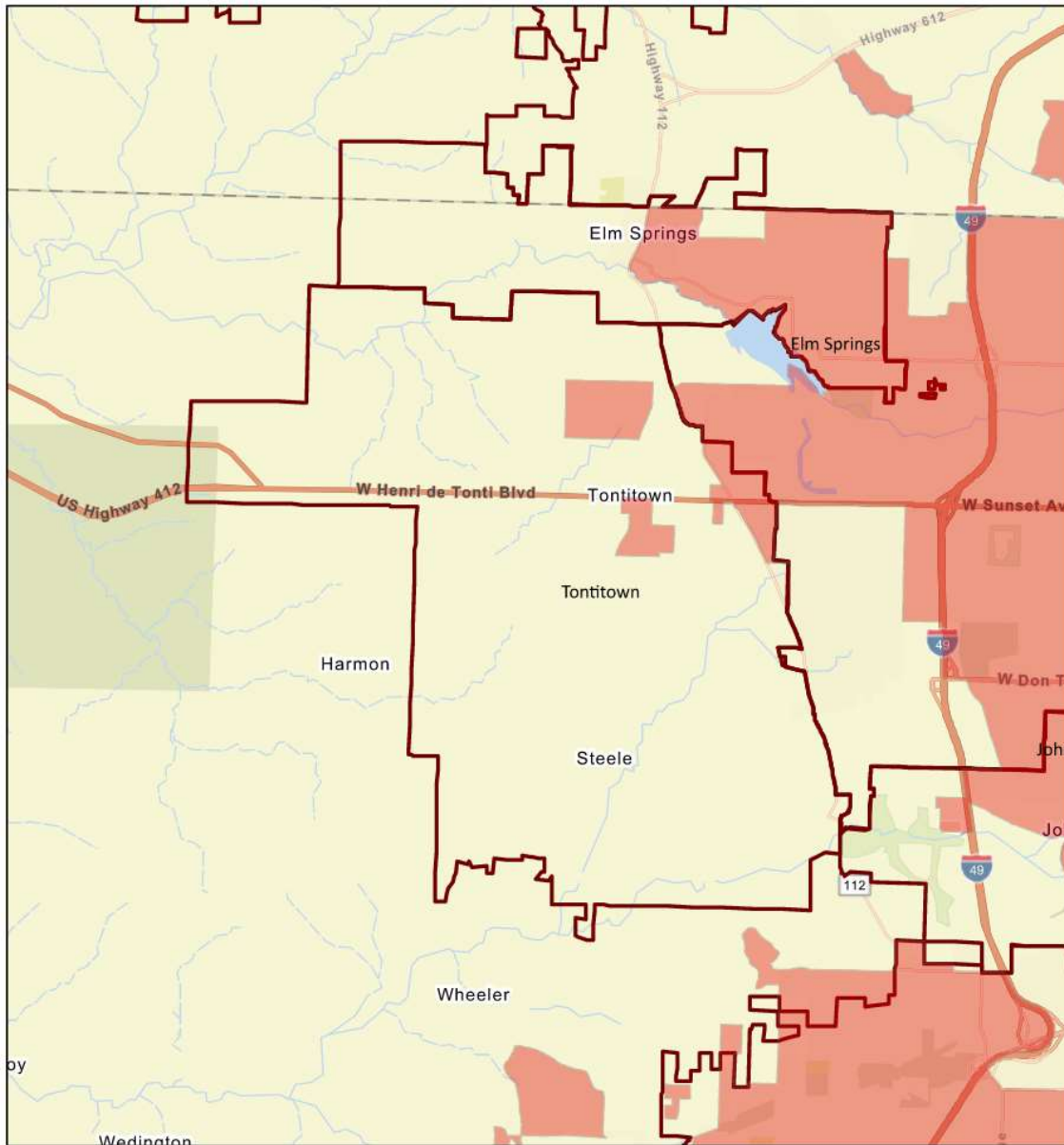
1. Protect citizens and property from flooding.
2. Improve surface and sub-surface waters for aquatic life and other beneficial uses.
3. Preserve and maintain surface waters, wetlands, and riparian areas.
4. Citizens, businesses, and industries understand the need to protect water quality.
5. Urban drainage ways become community amenities.

3. Description of the Permit Area:

The City of Tontitown (The City) serves a population of 4,301 people (2020) within the city limits. The City of Tontitown has 18 square miles of territory. The municipality is located directly west of the City of Springdale and south of City of Elm Springs in northern Washington County in northwestern Arkansas. The City has complete authority and responsibility for the stormwater drainage system within the city limits. Therefore, the NPDES permit for which this MS4 program is submitted covers only the area within the limits of the municipality. The City is within the Illinois River Watershed. The drainage areas include Brush Creek, Clear Creek, Wildcat Creek, Little Wildcat Creek and the tributary streams of these streams. The City's stormwater management practices have evolved to include efficient and cost-effective approaches that reduce or eliminate stormwater pollution and protect the riparian (streambank) areas of open waterways. These approaches provide natural pollutant removal and stormwater management capacity.

City of Tontitown Map:

2020 Census Urbanized Areas

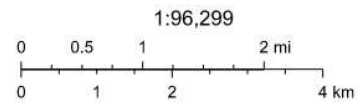


6/24/2024, 2:59:22 PM

NWA 2020 Census Urban Areas

Fayetteville--Springdale--Rogers, AR--MO

Northwest Arkansas City Limits



City of Springdale, AR, Arkansas GIS Office, Missouri Dept. of Conservation, Missouri DNR, Texas Parks & Wildlife, Esri, TomTom, Garmin, SafeGraph, GeoTechnologies, Inc, METI/NASA, USGS, EPA, NPS, USDA, USFWS

ArcGIS Web AppBuilder

City of Springdale, AR, Arkansas GIS Office, Missouri Dept. of Conservation, Missouri DNR, Texas Parks & Wildlife, Esri, TomTom, Garmin, SafeGraph, GeoTechnologies, Inc, METI/NASA, USGS,

Overview of Tontitown's Stormwater Drainage Systems:

The City is responsible for implementing surface water management activities within its boundaries, including the planning, design, construction, operation, and maintenance of the stormwater drainage system. City staff performs all operations and maintenance on the drainage system that is designed and constructed to City standards and located within public easements or rights-of-way, or that is located on real property that has been conveyed or dedicated to the City. The City also maintains open channels throughout the city, and the public outfalls to natural streams within the City's jurisdiction. Connected to the public stormwater drainage system are some private stormwater management facilities that help moderate and reduce the volume and pollutant content of stormwater leaving private property.

Stormwater Drainage Basin Characterization:

The City's stormwater drainage system has three major drainage basins which are Brush Creek, Clear Creek, and Wildcat Creek. The City is further broken down into several separate tributaries to these streams. A drainage basin can be described as a geographic area within which stormwater drains from many small systems converging on a larger drainage way, ultimately culminating in outfalls to the aforementioned creeks. The character and condition of the drainage ways varies significantly throughout the basins within Tontitown because of the surrounding land uses and contributing drainages.

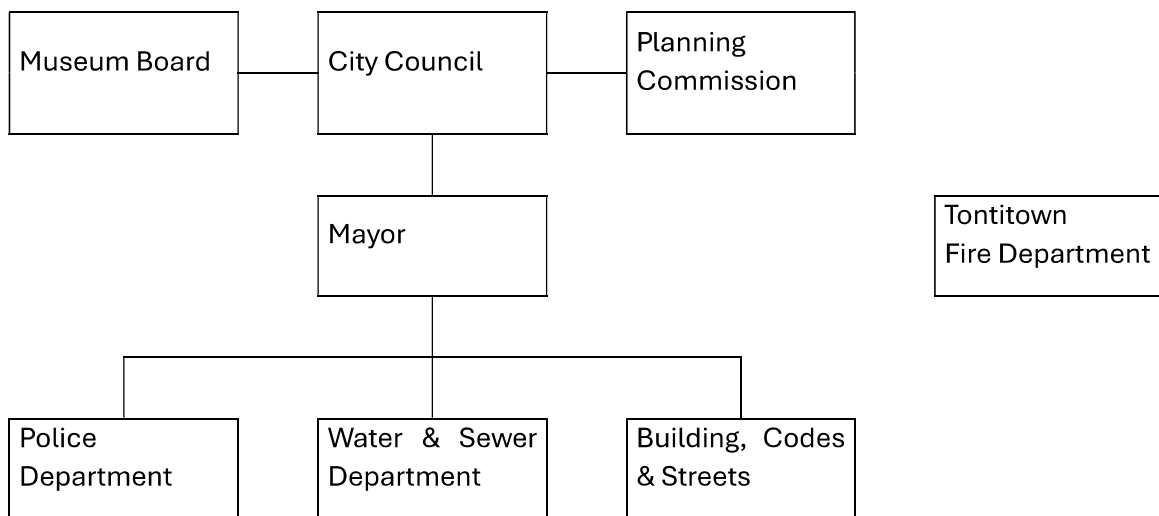
4. City Stormwater Management Program - Responsible Parties:

The City is responsible for implementing surface water management activities within its boundaries, including the planning, design, construction, operation, and maintenance of the stormwater drainage system. In response to the NPDES Phase II stormwater requirements, the City has developed an MS4 program addressing each of the six required Minimum Control Measures, as specified in the Federal-NPDES Phase II rules. The City's stormwater management program is the responsibility of the City Administration. The implementation of the City's MS4 program will extend throughout the City organization. Each Department's tasks will include (at a minimum) recognizing stormwater issues of their facility and the field work they do and logging data for any event that is stormwater-related. Public Education and Involvement would be encouraged with their fellow crew members, families and neighbors. The Northwest Arkansas Regional Planning Commission and the University of Arkansas Cooperative Extension Service has contracted with the City to be responsible for the development and implementation of the public education efforts even though the City recognizes their services are only partial coverage and the City is ultimately responsible for these control measures.

MS4 Primary Points of Contact:

Mayor P.O. Box 305 Tontitown, AR 72770 Phone: 479-361-2700	Building, Codes & Streets Department Manager P.O. Box 305 Tontitown, AR 72770 Phone: 479-361-2700
--	---

City Organization Chart



Departments & City Administration:

Tontitown Fire Department (TFD) - Tontitown is provided fire protection by TFD. Spill prevention and response is a requirement of the City's MS4 permit. The TFD in conjunction with the Northwest Arkansas Regional Haz-Mat Team works to prevent, contain and respond to spills that have a potential to pollute the County's MS4. The spill response program includes a combination of spill response by each permittee and legal requirements for private entities within permittees municipal jurisdiction.

Mayor and City Council - The Mayor and the City Council of the City of Tontitown approve ordinances, changes to ordinances, contracts, fees and annual budgets.

Water and Sewer Department - The Water and Sewer Department manages the sewer and water distribution systems for the City. Water service is provided to 2,675 meters or a retail population of 6,340 (2024 data). The sanitary sewer collection system includes 22 miles of sanitary sewer

providing 1,720 service connections (2024 data). Wastewater from the sewer collection system is treated by the Northwest Arkansas Conservation Authority (NACA)'s regional wastewater plant.

Planning Commission - The Tontitown Planning Commission places a high priority on implementing new and innovative environmentally-friendly development techniques to protect sensitive public and private water supplies.

Building, Codes & Streets Department - The Building, Codes & Streets Department maintains the streets, cleans and maintains roadside ditches, and clean inlets. The Department also carries out inspections and ensures compliance to applicable regulations in the City.

5. NPDES Phase II BMP Requirements:

Specific best management practices (BMPs) are proposed for each Minimum Control Measure, which are intended to support the reduction of discharges of pollutants in stormwater runoff to the maximum extent practicable (MEP) as required by the Federal-NPDES Phase II rules. BMPs shall be re-evaluated in situations where an MS4 discharges to an impaired water body where the evaluation of the impairment has determined the MS4 is a contributor to the impairment. The enhanced BMPs shall be specifically addressed within the SWMP. In this section, a summary sheet is provided for each Minimum Control Measure, which includes a list of the selected BMPs, the rationale for their development and selection, and a summary of the measurable goals and implementation schedule. The summary sheet is followed by a fact sheet for each of the selected BMPs. Together, the summary sheets and the BMP fact sheets provide the following information in accordance with the Federal rules:

- A list of the responsible parties for the BMP implementation;
- A brief description of the BMP;
- A description of existing conditions;
- The proposed MS4 plan activities;
- Measurable goals; and
- An implementation schedule.

The BMP development/implementation schedule shows when certain activities will be completed on a calendar year basis.

A. Minimum Control Measure #1: Public Education and Outreach on Stormwater Impacts

Decision Process

The MS4 Stormwater Compliance Group meets to discuss stormwater pollution prevention and provide input on education activities. The NWA Stormwater Education Steering committee convenes at least once each year to review and evaluate program accomplishments and plan next steps. Both groups provide the localized input used to identify critical stormwater pollutants, education needs, target audiences, program methods and public relations strategies.

Public Education/Outreach BMPs

Develop and distribute educational materials

Input from both the MS4 Stormwater Compliance Group and NWA Stormwater Education Steering Committee guides the emphasis of electronic and printed educational materials. Once topics are identified, materials will be developed, adapted and/or gathered for distribution at public meetings, in support of presentations, and with educational displays. Examples may include fact sheets, videos, social media content, website content, newsletters, press releases, and PSAs.

Conduct stormwater education activities

Educational presentations will be given to illustrate stormwater dynamics, identify potential pollutants and pathways, describe techniques to reduce stormwater pollution and encourage voluntary BMP implementation according to the annual topic/audience emphases outlined in the table below.

Measurable Goal:

- Stormwater education programs will be conducted and documented.
- Mechanism types and numbers of educational materials will be documented.
- Develop 5 educational materials across the permit term.
- Attendance of MS4 Stormwater Compliance Group and Education Steering Committee meetings will be documented.

Responsible Party

The Northwest Arkansas Regional Planning Commission and the University of Arkansas Cooperative Extension Service have contracted with the MS4 to be responsible for the development and implementation of the public education efforts. A copy of that agreement is included in this plan.

Performance Standard:

Urban stormwater outreach/education programs will:

- include more than one mechanism;
- include at least five different stormwater themes with one targeted to the land development community.
- reach at least 50% of the urban area population.

Annual Reporting

The annual report shall identify each mechanism used, including each stormwater theme, audience targeted, and an estimate of how many people were reached by each mechanism.

**Minimum Control Measure #1:
5-Year Implementation Schedule**

2025	2026	2027	2028	2029
<i>Topic Emphases:</i> Storm drain awareness/dumping	<i>Topic Emphasis:</i> Slow runoff from impervious surfaces	<i>Topic Emphasis:</i> Sediment control	<i>Topic Emphasis:</i> Litter	<i>Topic Emphasis:</i> Yard waste
<i>Target Audience:</i> General public	<i>Target Audience:</i> Residential, municipal, and small commercial	<i>Target Audience:</i> Land development community	<i>Target Audience:</i> General public	<i>Target Audience:</i> General public and green industry
<i>Rationale:</i> Pollutants entering the storm drain system degrade water quality	<i>Rationale:</i> Negative impacts of stormwater runoff can be mitigated by slowing runoff and allowing it to stay on site through LID and disconnecting impervious surfaces.	<i>Rationale:</i> Sediment leaving construction sites can enter the storm drain system and degrade water quality	<i>Rationale:</i> Litter can enter the storm drain system and degrade water quality	<i>Rationale:</i> Improper yard waste disposal can clog drainage ways and excess fertilizer and pesticide applications can enter the storm drain system and degrade water

LID - Low Impact Development

B. Minimum Control Measure #2: Public Involvement/Participation

Decision Process

The MS4 Stormwater Compliance Group meets to discuss stormwater pollution prevention and provide input on education activities. The NWA Stormwater Education Steering committee (public membership comprised of diverse backgrounds/interests) convenes at least once each year to review and evaluate program accomplishments and plan next steps. Both groups provide the localized input used to identify critical stormwater pollutants, education needs, target audiences, program methods and public relations strategies.

Target Audience

The audience for public involvement programs and activities will be the general public and may include businesses, trade associations, environmental groups, homeowners and civic organizations.

Public Involvement/Participation BMPs

Engage Residents in Public Participation/Involvement Activities

Input from both the MS4 Stormwater Compliance Group and Education Steering Committee guides the emphases of educational materials, educational programs, and public involvement efforts. Residents will participate in public involvement activities. Examples may include stormwater compliance meetings, stormwater steering meetings, clean ups, rain barrel workshops, etc.

Measurable Goal:

- Public participation activities will be documented.
- Number of participants will be documented
- Volume or mass of trash removed during cleanups will be documented (if applicable).

Responsible Party

The Northwest Arkansas Regional Planning Commission and the University of Arkansas Cooperative Extension Service have contracted with the MS4 to be responsible for the development and implementation of the public involvement efforts. A copy of that agreement is included in this plan.

Performance Standard

At least 5 public participation and involvement activities will be coordinated over the permit term.

Annual Reporting

The annual report shall identify each public involvement/participation activity conducted, including a brief description of each activity, estimate of how many people participated, and the volume or mass of trash and litter removed if applicable.

C. Minimum Control Measure #3: Illicit Discharges Detection and Elimination

Permit Requirements:

The permittee must:

- Develop, implement and enforce a program to detect and eliminate illicit discharges [as defined in Part VI of the MS4 Permit] into the permittee's small MS4;
- Continue developing a storm sewer system map, showing the location of all outfalls and the names and location of all waters that receive discharges from those outfalls;
- Develop and implement a plan to locate, address and inspect all home sewage treatment systems at least once per year and implement appropriate enforcement procedures and actions.
- To the extent allowable under State or local law, effectively prohibit, through ordinance, or other regulatory mechanism, non-stormwater discharges into the permittee's storm sewer system and implement appropriate enforcement procedures and actions. Possible sanctions include non-monetary penalties (such as stop work orders), fines, bonding requirements and/or permit denials for non-compliance.
- Develop and implement a plan to detect and address non-stormwater discharges, including illegal dumping, to the permittee's system; include procedures for locating and prioritizing areas likely to have illicit discharges; procedures for tracing and removing the source; and procedures for program evaluation and assessment.
- Inform public employees, businesses, and the general public of hazards associated with illegal discharges and improper disposal of waste; and
- Address the following categories of discharges or flows (illicit discharges) if the permittee identifies them as significant contributors of pollutants to the permittee's small MS4: water line flushing, landscape irrigation, diverted stream flows, rising ground waters, uncontaminated ground water infiltration (as defined at 40 CFR §35.2005(20)), uncontaminated pumped ground water, discharges from potable water sources, foundation drains, air conditioning condensation, irrigation water, springs, water from crawl space pumps, footing drains, lawn watering, individual residential car washing, commercial on-the-lot car washing, commercial mobile car washing units, flows from riparian habitats and wetlands, de-chlorinated swimming pool discharges, and street wash water and discharges or flows from firefighting activities are excluded from the effective prohibition.
- The permittee must also develop a list of other similar occasional incidental non-stormwater discharges (e.g. non-commercial or charity car washes) that will not be addressed as illicit discharges. These non-stormwater discharges must not be reasonably expected (based on information available to the permittees) to be significant sources of pollutants to the MS4, either

because of the nature of the discharges or conditions the permittee have established for allowing these discharges to the permittee's MS4 (e.g., a charity car wash with appropriate controls on frequency, proximity to waters such as impaired waters, waters with an applicable TMDL, ERWs, ESWs, or NSWs, BMPs on the wash water, etc.). The permittee must document in the permittee's stormwater management program plan any local controls or conditions placed on the discharges. The permittee must include a provision prohibiting any individual non-stormwater discharge that is determined to be contributing substantial amounts of pollutants to the permittee's MS4.

- The permittee must develop a process to respond to and document complaints relating to illicit discharges.

Applicable City of Tontitown BMPs: Illicit Discharge Detection and Elimination (IDDE):

IDDE1 - Illicit Discharges Reporting and Tracking System

- Review City Ordinance 2005-11-233 (amended by Ord. 2019-06-847 and 2021-06-952) and municipal code and modify as necessary to strengthen mechanisms that prohibit illicit discharges. This is the regulatory mechanism for illicit discharge.
- City Staff to report any concerns observed while completing their daily responsibilities.
- Public Reports or complaints phoned in to City.
- All reports are documented, and a file created for investigation and resolution.

Measurable Goals:

- Compile ordinance for review to provide a strengthened mechanisms to prohibit illicit discharges.

IDDE2 – Storm Sewer & Outfall Inventory

- Continual inventory collection of stormwater outfall will be done so that it is easier to track back to locate the source of discharges when they occur.
- Outfalls will be inspected, and inspection results recorded.

Measurable Goals:

- Document number of outfalls dry-weather screened, number of dry-weather flows, all illicit discharges referencing departments locating the illicit discharge.

IDDE3 – Storm Sewer & Outfall Mapping and Database

- Map all existing outfalls and, when complete, any new outfalls that have been added.
- Inventory mapping of street, inlets, piping and tie-ins is scheduled.

Measurable Goals:

- Complete mapping of the storm sewer system, and update on an annual basis.

IDDE4 – City-wide Illicit Discharge Detection and Elimination Plan

○ Detection

- Dry-weather screening of all stormwater outfalls for illicit discharges will occur for all outfalls located in the MS4's urban area.
- City Staff to report any concerns observed while completing their daily responsibilities.
- City Staff to review Sanitary Overflow reports from Elm Springs and Springdale Water and Sewer Utilities.
- City Staff will implement procedures based on the 'Illicit Discharge Detection and Elimination – A Guidance Manual for Program Development and Technical Assessment' by the Center for Water Shed Protection and Robert Pitt.
- Public reports or complaints received by the City will be documented.
- All reports are documented, and a file created for investigation and resolution.
- Investigation of all reports is implemented based on priority.
- Investigation includes notification to responsible party and plan of resolution.

○ Elimination

- Implemented through Public education BMPs such as Clean Water Into Storm Curb Drain and Door Hangers.
- Education of City staff and area businesses.
- City Staff to enforce applicable city ordinances that exist and are developed. The Drainage Criteria Manual (Amended Ordinance 2005-11-233) specifically addresses illicit discharges (dumping, spills, etc.).
- Report and investigative responses are filed.
- Severe incidents will be reported to the appropriate state or federal agency.

Measurable Goals:

- Document the number of complaints received, location, type of illicit discharge, response required and any enforcement administered.
- Review policies and procedures and implement new protocols for finding and responding to illicit discharges. Create tracking mechanism for documents and files.

IDDE5 - Non-Stormwater Discharge Assessment

- Non-stormwater discharge that is not prohibited, that is allowable, can enter the City's MS4 as long as it does not pose a risk to water quality
- City to determine if discharge is detrimental to stormwater system. This is the identification of allowable non-stormwater discharges
- Appropriate ordinances and management will be created to regulate the impacts.
- If a discharge is found to be a significant source of pollutants to waters of the United States, it must be prohibited, or the City must develop and required the implementation of appropriate BMPs to reduce the discharge of pollutants to the MEP.

Measurable Goals:

- Develop procedures to assess non-stormwater discharge.

Rationale

The City selected the above five BMPs to address the permit requirements. The successful implementation of a tracking and elimination program that includes complete mapping of the storm sewer system, standard forms and procedures, and the ability to track progress of events such as screenings, inspections and enforcement is important for the City of Tontitown. The BMPs were chosen based on existing partnerships and the resources available to the City.

The City shall assess illicit discharges and determine if they adversely impact the stormwater system. If they are found to cause an adverse impact, appropriate management practices or regulations will be used. Dry weather screening, located by maintenance activities, citizens reporting or other means shall be tracked to their source, if possible, sampled if the substance is not obvious and assessed for elimination requirements. Tracking may include associating the type of illicit discharge to certain facilities upstream. Based on the appropriate number of known facts, enforcement will follow. Citizen hotline requirements are covered by public knowledge of phone numbers of City Hall, Police Dispatch and several other City numbers. Complaints and tips phoned in regarding an incident are forwarded to the appropriate City personnel that handle the particular situation. MS4 employees, businesses, industries and general public will be informed of the hazards associated with illicit discharges and improper disposal of wastes, which may be by telephone, e-mail or a post on tontitown.com.

BMP IDDE1 (Reporting and Monitoring) has several methods of reporting presumed illicit spills, sightings and discharges. Most of the City's personnel - while doing their daily jobs - will report potential illicit problem areas to the Building, Codes & Streets Manager who will work with other departments to assess, enforce and/or deal with clean-up issues. Reported problems will be investigated immediately or as soon as practically possible, depending on the situation. Minor infractions will be brought to the property owner's attention; followed up on; and an investigation report will be placed in the City's Illicit Discharge files - complete with pictures and the

investigation results. Major infractions will be brought to the property owner's attention; followed up on; an investigation report filed; and enforcement protocols (that will be developed during this permit cycle) will be followed. Other incidents involving waterbodies; fish kills; and other unknown circumstances will be reported to State Fish and Wildlife and/or ADEQ for their expertise and water quality measurement capabilities. Both IDDE1 and IDDE4 will include publishing phone numbers of City Hall, Police Dispatch and other City numbers for the public to provide tips, complaints and grievances for the most efficient and effective follow-up actions in response to calls.

IDDE2 and IDDE3 will work together to develop a database of the stormwater inventory and map of the City's Stormwater System. The map will be updated as needed by the Planning Department, who will coordinate dry-weather screenings with locating previously unmarked outfall locations by GPS-locating outfalls and recording all pertinent information for the outfall. The condition of streambeds will be observed during the outfall and dry-weather searches for evidence of past illicit discharges. Additionally, as a part of BMP IDDE3, it is proposed to electronically overlay a copy of the sanitary sewer system map with the storm sewer system map. The electronic overlay will show the storm sewer system, sanitary sewer system and other public infrastructure to show areas within the City limits that have no sanitary system and likely on septic systems. These areas would be prioritized first for site investigations and dry stream observations for potential illicit discharges. Each system investigated will be logged by GPS and include a condition report, and the next scheduled time for inspection. Findings of illicit discharges would be brought to the attention of the owner of the responsible property or the person overseeing the site so the problem(s) can be corrected. Uncorrected or resolved issues will result in regulatory and enforcement action(s) defined in city codes. Commercial and industrial sectors (such as manufacturing facilities, mechanic shops, junk car sites and restaurants) would also be prioritized for review to help those businesses recognize that improperly handled waste products from these facilities have the potential of illicit discharges. Outfall Inventory and Mapping of the storm draining system will commence and updates will be made as needed. Non-Stormwater Discharge Assessments will occur in conjunction with the mapping schedule and include dry-weather screenings activities.

BMP IDDE4 includes the monitoring program conducted by the City to identify and track the sources of illicit discharges. Regarding Illicit Discharges response and enforcement, any pollution complaints and spills in the City of Tontitown are handled by the TFD and/or the Northwest Arkansas Regional Haz-Mat Team.

Regarding solid waste, the City of Tontitown realizes there are other forms of waste that will need to be disposed. The City has a contractual agreement with Waste Management of Northwest Arkansas to allow residents of Tontitown to recycle/dispose of non-biodegradable items. There is also a process in place to dispose of yard waste at curbside as well. The City of Tontitown also partners with Washington County and Boston Mountain Solid Waste, each of which operates an enforcement program on illegal dumps, solid waste and junkyards. When necessary, city staff will work with the Boston Mountain Solid Waste District's Environmental Enforcement Officers when illegal dumping occurs since they are commissioned by the State of Arkansas as Illegal Dump Control Officers.

Responsible Parties

- The City of Tontitown Building, Codes & Streets Department
- The Tontitown Fire Department
- Northwest Arkansas Regional Haz-Mat Team

The City of Tontitown shall oversee these efforts and will ensure that all permit requirements are met.

Summary of Measurable Goals for each calendar year

- Number of outfalls dry-weather screened
- Number of dry-weather flows identified
- Number of illicit discharges identified
- Number of illicit discharges eliminated
- Number of complaints received, location, type of illicit discharge, response required and any enforcement administered.
- Schedules of elimination of illicit connections that have been identified but have yet to be eliminated.
- Summary of any stormwater sewer mapping progress.
- Summary of code review
- Summary of review of policies and procedures and implement new protocols for finding and responding to illicit discharges assessing non-stormwater discharge.

Annual Reporting

The annual report shall document the following:

- number of outfalls dry-weather screened;
- number of dry-weather flows identified;
- number of illicit discharges identified;
- number of illicit discharges eliminated;
- provide schedules for elimination of illicit connections that have been identified
- but have yet to be eliminated; and
- a summary of any storm sewer system mapping updates.

Development/Implementation Schedule

BMP#	PERMIT YR 1	PERMIT YR 2	PERMIT YR 3	PERMIT YR 4	PERMIT YR 5
IDDE1	Document number of calls received each year. Review existing Municipal Code and modify as necessary.	Document number of calls received each year. Implement program improvements as warranted. Monitor and draft any revisions needed due to permit requirements. Adopt and enforce any revised ordinance requirements.	Document number of calls received each year. Monitor and revise as necessary. Monitor and draft any revisions needed due to permit requirements. Adopt and enforce any revised ordinance requirements.	Document number of calls received each year. Monitor and revise as necessary. Monitor and draft any revisions needed due to permit requirements. Adopt and enforce any revised ordinance requirements.	Document number of calls received each year. Monitor and revise as necessary. Monitor and draft any revisions needed due to permit requirements. Adopt and enforce any revised ordinance requirements.

BMP#	PERMIT YR 1	PERMIT YR 2	PERMIT YR 3	PERMIT YR 4	PERMIT YR 5
IDDE2	Conduct dry inspections of existing outfalls, covering 20% of the total number.	Conduct dry inspections of existing outfalls, covering an additional 20% each year until all are inspected by the end of the permit. Identify and inspect new outfalls as they are constructed or found.	Conduct dry inspections of existing outfalls, covering an additional 20% each year until all are inspected by the end of the permit. Identify and inspect new outfalls as they are constructed or found.	Conduct dry inspections of existing outfalls, covering an additional 20% each year until all are inspected by the end of the permit. Identify and inspect new outfalls as they are constructed or found.	Conduct dry inspections of existing outfalls, covering an additional 20% each year until all are inspected by the end of the permit. Identify and inspect new outfalls as they are constructed or found.
IDDE3	Conduct inspections of existing outfalls, in conjunction with IDDE3, develop data to develop a municipal storm sewer map.	Implement the municipal storm sewer map utilizing GIS and update as necessary.	Monitor, update and revise as necessary	Monitor, update and revise as necessary	Monitor, update and revise as necessary
IDDE4	Develop protocols for maintaining data, finding and responding to illicit discharges and complaints . Maintain a database of discharge locations reported.	Adopt and implement protocols for maintaining data, finding and responding to illicit discharges and complaints .	Review protocols, reports, etc. to improve the reporting and detecting processes.	Review protocols, reports, etc. to improve the reporting and detecting processes.	Review protocols, reports, etc. to improve the reporting and detecting processes.
IDDE5	Create & implement Non-Stormwater Discharge Assessment program	Monitor and revise as necessary	Monitor and revise as necessary	Monitor and revise as necessary	Monitor and revise as necessary

D. Minimum Control Measure #4: Construction Site Stormwater Runoff Control

Permit Requirements:

The permittee must develop, implement and enforce a program to reduce pollutants in any stormwater runoff to the permittee's small MS4 from construction activities that result in a land disturbance of greater than or equal to one acre. Reduction of stormwater discharges from construction activity disturbing less than one acre must be included in the permittee's program if that construction activity is part of a larger common plan of development or sale that would disturb one acre or more. For stormwater discharges associated with small construction activity in accordance with 40 CFR §122.26(b)(15)(i), the permittee will develop, implement, and enforce a program to reduce pollutant discharges from such sites. The permittee's program must include the development and implementation of, at a minimum:

- An ordinance or other regulatory mechanism to require erosion and sediment controls, as well as sanctions to ensure compliance, to the extent allowable under State or local law;
- Requirements for construction site operators to implement appropriate erosion and sediment control Best Management Practices;
- Requirements for construction site operators to prevent or control waste that may cause adverse impacts to water quality such as discarded building materials, concrete truck washout, chemicals, litter and sanitary waste at the construction site;
- Procedures for site plan review and land division that incorporate measures to prevent or control potential water quality impacts;
- Procedures for receipt and consideration of information submitted by the public; and
- Procedures for site inspection and enforcement of control measures.

Applicable City of Tontitown BMPs Construction Site Waste (CSW):***CSW1 - Erosion and Sediment Control Regulations***

- The Drainage Criteria Manual details the city's mechanism used to require erosion and sediment controls at construction sites.
- Ordinances concerning stormwater runoff are in place to require new developments to follow good engineering practices regarding stormwater and drainage.

Measurable Goals:

- Separately document changes made to all stormwater regulation Ordinances to improve construction site requirements.
- Review Ordinances for compliance with this permit.

CSW2 - Sediment and Erosion Control Requirements

- Drainage Manual. Adopt and implement a new drainage manual with updated stormwater design and runoff prevention requirements.
- Prior to construction, all projects are reviewed by City staff for compliance with Ordinances, BMPs are to be installed and a preconstruction meeting is held to discuss maintenance of BMPs during construction. Additionally, the site plan review shall incorporate consideration of potential water quality impacts.
- Specific requirements for construction site operators will be addressed in Ordinances and are shown on the erosion control plan which is required by Ordinance. Erosion and sediment control are shown on the erosion control plan as well as measures to control waste. Such waste includes discarded building materials, concrete truck washouts, chemicals, litter and sanitary waste.
- The Building, Codes & Streets Department shall manage and ensure implementation of the Ordinances.

Measurable Goals:

- Number of applicable sites in the MS4 jurisdiction.
- Number of pre-construction site plan reviews performed.
- Review Ordinances for compliance with this permit.

CSW3 - Complaint Reporting and Response System

- A system for citizens to report suspect discharges will be created so city personnel can respond, review, and see that clean-up takes place in a timely manner specified and documented by the responding city personnel. Enforcement may need to also follow-up on reports. Sites receiving complaints are given priority for next-available inspection time over regular site visits and/or inspections.
- The system will annually be monitored, reviewed, evaluated and assessed.
- Any reports of non-compliance of BMPs on any construction site within the City received by the Building, Codes & Streets Department will be inspected within 72 hours. The reports and subsequent inspection reports will be tracked using the same tracking system as illicit discharges.

Measurable Goals:

- Number of complaints received, and number followed up.

CSW4 - Site Plan Reviews

- Plans for large-scale developments, subdivisions, large-scale waivers are to be reviewed to see how well they adhere to the City's development requirements.
- Grading permits must be applied for, and those requirements also met before ground can be broken on any site.

Measurable Goals:

- Number of preconstruction site plan review performed.

CSW5 - Site Inspections

- Ordinance No. 2021-06-952 is the City's mechanism used to enforce compliance with erosion and sediment control.
- At least one monthly documented inspection of construction and other development sites to answer questions, resolve potential problems and prevent failures of stormwater preventative measures as well as structural items will be performed. Results of monthly inspections of construction sites will be recorded.
- Enforcement requirements will be documented at construction sites. These inspections will address any potential problems from trash, track-out, wash-out areas, sedimentation, dust and other issues that might and/or will need to be addressed by the contractor.
- Monthly inspections will result in paperwork of which the contractor will receive a copy. If a site-BMP or issue needs to be addressed, the City's inspector will at least mention it to the contractor verbally, but he may also include it in his written report. Both the verbal and written "results" will be shared with the contractor with deadlines - when the inspector will be back to follow-up on those items that need to be addressed.
- Sites receiving complaints will be given priority for next-available inspection time over regular site visits and/or inspections. Sites with problems and/or public complaints will be inspected weekly until the problem is resolved.

Measurable Goals:

- Number of applicable sites in the MS4's jurisdiction.
- Number and frequency of site inspections.

CSW6 - Enforcement

- Ordinance No. 2021-06-952 is the City's mechanism to sanction non-compliance of the erosion and sediment control provisions.
- Although prevention of large problems begins with education of owner/operators, enforcement shall be used to help stop the reoccurrence of events.

Measurable Goals:

- Number of enforcement actions taken.
- Number of violation letters issued.

Rationale

The City selected the above BMPs to address each component of the construction site runoff control requirements based on available city resources. Erosion and Sediment Control Regulations (Stormwater Management Manual) will be made available at the Tontitown city hall or will be made available online. The Building, Codes & Streets Department Manager is responsible for overall implementation of the program. Construction site operators will be required to implement appropriate erosion and sediment control BMPs and control waste at construction sites that may cause adverse impacts to water quality. Such wastes include discarded building materials, concrete truck washouts, chemicals, litter and sanitary waste. Inspections and enforcement will include pre-construction site plan reviews of 100 percent of projects within the City of Tontitown which incorporate consideration of potential water quality impacts. Policies dealing with non-monetary penalties (such as stop work orders), fines, bonding requirements and/or permit denials for noncompliance are in place and will be further developed as need requires. Site Inspections will include a monthly inspection at active construction sites within the City of Tontitown with Stormwater Permits. Sites that have a history of incompliance will be inspected on a weekly basis. Sites are prioritized based on potential hazards. On an ongoing basis, the City will investigate and refer solid waste and stormwater complaints received. The Planning Commission will evaluate each project that is submitted to the City of Tontitown's Planning Commission and Conditional Use Permit, Subdivision, Lot Split or Large Scale Development is reviewed by the city engineer for compliance with Draining Criteria Manual and Stormwater Management Manual. The City will evaluate the success on an on-going basis and the measurable goals were determined because they are essential in developing and maintaining an optimal program.

Responsible Parties

The City's Planning Department maintains the City Code of Ordinances related to construction and coordinates the Site Plan and Drainage Review process. The Department staff is also responsible for implementation and inspection of approved land alteration and development projects for overall development criteria as well as erosion and sediment control and construction site runoff controls. The Building, Codes & Streets Department will aid in monitoring control of new housing sites. Enforcement of these areas of the City's Codes is conducted in coordination with the Office of the City Attorney, if necessary.

- The City of Tontitown staff, including City Engineer
- The City of Tontitown's Planning Commission

Summary of Measurable Goals

Staff shall review the Municipal Code and Development Code provisions related to erosion control and construction site runoff during the permit period and revise as necessary. The measurement of success of the program will be based on monitoring of compliance and avoidance of impacts to water quality from land alteration and construction. The effects of land alteration and construction will be minimized with well-positioned BMPs, systematic monitoring, maintenance, and continued education of site construction personnel as well as City employees.

Annual Reporting

The annual report shall document the following:

- number of applicable sites in the MS4's jurisdiction;
- number of pre-construction site plan reviews performed;
- number and frequency of site inspections;
- number of violation letters issued;
- number of enforcement actions taken; and
- (6) number of complaints received and number followed up on.

Development/Implementation Schedule

BMP#	PERMIT YR 1	PERMIT YR 2	PERMIT YR 3	PERMIT YR 4	PERMIT YR 5
CSW1	Review existing Municipal Code for erosion and construction site runoff control effectiveness.	Review and modify provisions as necessary.	Review and modify provisions as necessary.	Review and modify provisions as necessary.	Review and modify provisions as necessary.
CSW2	Implement existing Code authority on an ongoing basis. Review and develop a new drainage manual with updated stormwater design and runoff prevention requirements.	Implement existing Code authority on an ongoing basis. Review and adopt a new drainage manual with updated stormwater design and runoff prevention requirements.	Implement existing Code authority on an ongoing basis. Review and amend the Code as appropriate.	Implement existing Code authority on an ongoing basis. Review and amend the Code as appropriate.	Implement existing Code authority on an ongoing basis. Review and amend the Code as appropriate.

BMP#	PERMIT YR 1	PERMIT YR 2	PERMIT YR 3	PERMIT YR 4	PERMIT YR 5
CSW3	Develop complaint reporting and response system.	Implement complaint reporting and response system.	Revise system as necessary. Document number of complaints and those followed up.	Revise system as necessary. Document number of complaints and those followed up.	Revise system as necessary. Document number of complaints and those followed up.
CSW4	Review plans and enforce applicable rules regulations.				
CSW5	Performing inspections as allowed by city ordinances, review and develop additional applicable inspection procedures	Perform inspections as necessary, and document applicable sites and the number and frequency of site inspections. Review and revise procedures as necessary.			
CSW6	Continue enforcement as allowed by city ordinances, review and develop additional applicable enforcement procedures	Continue enforcement of the rules and regulations as they pertain to stormwater management. Document actions taken and letters issued.			

E. Minimum Control Measure #5: Post-Construction Stormwater Management for New Development and Redevelopment

Permit Requirements:

The permittee must:

- Develop, implement and enforce a program to ensure reduction of pollutants in stormwater runoff to the maximum extent practicable (MEP) from new development and redevelopment projects that disturb one acre or more, or less than one acre if they are part of a larger common plan of development or sale, and discharge into the permittee's small MS4. The permittee's program must ensure that controls are in place that would prevent or minimize water quality impacts.
- Develop and implement strategies that include a combination of structural or non-structural BMPs appropriate for the permittee's community.
- Use an ordinance or other regulatory mechanism to address post-construction runoff from new development and redevelopment projects to the extent allowable under State or local law.

- Ensure adequate long-term operation and maintenance of BMPs; and ensure adequate enforcement of ordinance or alternative regulatory program.

Applicable City of Tontitown BMPs Development Standards (DS):

DS1 - *City Code of Ordinances, Engineering Drainage Criteria Manual and BMP Manual*

- The City will conduct a review of ordinances and propose changes to address post-construction runoff from new developments and redevelopments such that pollutants from stormwater runoff are reduced to the maximum extent practicable, in partial compliance with the requirements of this Minimum Control Measure.
- Non-structural BMPs in the program will be included in a future ordinance.
- Structural BMPs for post construction runoff have not been incorporated into the city code. A code review will be conducted.

Measurable Goals:

- Code review to include post construction runoff control and review and revise as necessary, a new drainage manual and begin to use in plan reviews.

DS2 - *Post Construction Requirements*

- Review and revise stormwater, grading, erosion control and tree ordinance as needed for post-construction requirements.

Measurable Goals:

- Review city ordinances and revise, if necessary, regarding structural and non-structural standards.

DS3 - *Post Construction Site Plan Review*

- Plans for large-scale developments, subdivisions, large-scale waivers are to be reviewed to see how well they adhere to City development requirements.

Measurable Goals:

- Review, comment and/or approve a plan review for each set of documents submitted, and document number of applicable sites requiring post-construction BMPs and the number of plans reviewed.

DS4 - Post Construction Site Inspection

- Regular maintenance and inspections of post-construction stormwater controls are done to answer questions, resolve potential purpose and usage problems, and prevent failures.

Measurable Goals:

- Number and frequency of site inspections.

DS5 - Post Construction Enforcement

- Although prevention of large problems begins with education of owner/operators, enforcement shall be used to help stop the reoccurrence of events.

Measurable Goals:

- Number of violation letters and enforcement actions taken.

DS6 - Long-Term Operations and Management Plans

- Agreements that private property owners, property- or home-owner associations and/or developers have with the City of Tontitown stating that the maintenance and operation of post-construction BMPs will be paid for and overseen by the non-government party.
- Agreements give the City of Tontitown the right to periodically inspect the BMP and to enforce maintenance, repairs, replacement, upgrades, improvements and/or other actions to preserve the purpose and function of the BMP.

Measurable Goals:

- Document number of sites requiring plans/agreements and the number of plans developed/agreements in place.

DS7 - Low Impact Development (LID)

- City will conduct a review of Ordinances.

Measurable Goals:

- Code review to include possible LID ordinances.

Rationale

The City selected the above BMPs to meet the post-construction Minimum Control Measure requirements. The Erosion Control Regulation, available at <http://www.tontitown.com>, lists City regulations as it pertains to stormwater. Stormwater Management Manual/Draining Criteria Manual will be utilized for additional BMPs. The University of Arkansas also wrote the BMP Manual for the

Northwest Arkansas MS4's and was chosen because the BMPs are specific to the conditions and needs that are in the NWA area and address many important controls and BMPs. Additionally, the City will put in place more stringent regulations that require new developments in the post construction phase to incorporate stormwater management BMPs to reduce the impacts associated with stormwater runoff generated at the site.

BMP DS1 provides for maintenance and revisions of the selected Code of Ordinances requirements and the more specific design requirements included in the Engineering Drainage Criteria Manual and BMP Manual, such that pollutants from stormwater runoff from new development are reduced to the maximum extent practicable, in partial compliance with the requirements of this Minimum Control Measure. Additionally, BMP DS1 was selected to improve linkage and cross reference between the Ordinances and create better detail to ensure all areas disturbed by construction or other means have been properly stabilized.

BMP DS2 provides for the development of a long-term inspection and enforcement program, which is still needed to fulfill all the requirements, and will be an ongoing process during the permit period. Construction Site Inspection is authorized by City ordinance and is carried out per the Stormwater Management Manual/Drainage Criteria Manual. The city engineer reviews all plans for development of retention/detention ponds for compliance. Sites with a history of noncompliance will be prioritized.

BMP DS3 was selected to address opportunities for implementing water quality improvement projects associated with Low Impact Development. This BMP will require the development of a long-term outreach to homeowners, neighborhood POAs, developers and Engineering Design groups.

Responsible Parties

- The City of Tontitown Planning Commission
- The City of Tontitown Building, Codes & Streets Department

Summary of Measurable Goals

The regulatory framework for control of post-construction stormwater runoff contained in Tontitown's Code of Ordinances and will be reviewed on an on-going basis. This framework will seek out refinements and be expanded as needed to improve the City's capability to achieve reductions in stormwater pollution from new developments through periodic evaluations and updates to the Codes.

- Technical Plat Review and Land Division approvals will be monitored for adequacy of stormwater quality management to ensure that compliance for post construction is being met. All new stormwater drainage infrastructures on new developments will be reviewed for incorporation of stormwater quality improvement facilities in place at the final inspection. Projects will be disapproved until these projects have met all the requirements. The decreasing number of project disapprovals during the year would partially reflect measures of success.
- Stormwater Pollution Plans will be monitored for adequacy of stormwater quality management, and all inspection practices will be monitored, and additional training will be

provided as needed to the City departments. An annual review/survey of new development to ascertain what was constructed in Year One is functioning properly and without evidence of pollution in Year Two and beyond.

- In addition, compliance achieved in public and private maintenance of stormwater management systems, as required in the development approval process, will be monitored.
- Efforts to identify and remove impediments for LID will also be included. Recommendations for LID at Technical Plat Review and Land Division approvals will be monitored with cost comparisons between traditional development and LID.

Annual Reporting

The MS4 annual report shall document the following:

- (1) number of applicable sites in the jurisdiction requiring post-construction controls;
- (2) number of pre-construction site plan reviews performed;
- (3) number of inspections performed to ensure as built per requirements;
- (4) compliance rates with MS4 requirements; and
- (5) number of long-term O&M plans developed and agreements in place.

Development/Implementation Schedule

BMP#	PERMIT YR 1	PERMIT YR 2	PERMIT YR 3	PERMIT YR 4	PERMIT YR 5
DS1	Review Codes and propose ordinances as appropriate.	Seek City Council approval & adoption of ordinances. Review Engineering Drainage Criteria Standards and BMP Manual and amend as needed to reflect Best Management Practices.	Continue enforcing existing Codes/ Drainage Manual and monitor/analyze effectiveness at achieving BMPs that comply with pollutant reduction MEP requirement and update as needed.	Continue enforcing existing Codes/ Drainage Manual and monitor/analyze effectiveness at achieving BMPs that comply with pollutant reduction MEP requirement and update as needed.	Continue enforcing existing Codes/ Drainage Manual and monitor/analyze effectiveness at achieving BMPs that comply with pollutant reduction MEP requirement and update as needed.
DS2	Review existing Municipal Code for effectiveness.	Review and modify provisions as necessary.			
DS3	Review plans and enforce applicable rules regulations.				
DS4	Review, develop, and implement applicable inspection procedures	Maintain inspection and compliance activities and monitor/analyze program effectiveness and success/failure of BMPs observed over time.			
DS5	Review and develop additional applicable enforcement procedures	Continue enforcement of the rules and regulations as they pertain to stormwater management. Document actions taken and letters issued.			
DS6	Develop procedures for handling long-term operations and management plans	Maintain and review as necessary			
DS7	Begin reviewing for LID impediments	Continue to review development codes for LID impediments.	Continue to review development codes for LID impediments.	Include efforts to identify and remove impediments for LID on report	Monitor and revise as necessary

F. Minimum Control Measure #6: Pollution Prevention / Good Housekeeping for Municipal Operations

Permit Requirements:

The permittee must:

- Develop and implement an operation and maintenance program that includes a training component and has the ultimate goal of preventing or reducing pollutant runoff from municipal operations; and
- Using training materials that are available from the ADEQ, EPA or other organizations, the permittee's program must include employee training to prevent and reduce stormwater pollution from activities including, but not limited to, park and open space maintenance, fleet and building maintenance, new municipal facility construction and related land disturbances, design and construction of street and storm drain systems, and stormwater system maintenance.

Applicable City of Tontitown BMPs Operation and Maintenance (OM):

OM1 Operation & Maintenance Program

- The City of Tontitown's Building, Codes & Streets Department manages the cleaning out of curb inlets to remove sediment and debris that could potentially clog storm drains, and continually cleans and reshapes the ditches to maintain positive drainage.
- Updates to the SWMP will be made to include any roadway operation, facility, and management changes.
- An Operation and Maintenance Procedures for Municipal Operations Manual has been drafted and will be implemented by the City. The program includes a survey of facilities owned and operated by the City. Stormwater BMPs will be incorporated into these facilities as needed.
- Procedures for the proper disposal of wastes removed from the MS4 and municipal operations.
- Flood management projects will be assessed in conjunction with the approval of Flood Plain Development.
- Annual inspections of the city maintenance shop, two city hall buildings, park facilities, and the fire department building will be conducted and recorded.

Measurable Goals:

- List of Municipal Facilities.
- Development of BMPs for Facilities as needed.
- Procedures written for operations and procedures.

OM2 Training Program

- As part of the contract with Northwest Arkansas Regional Planning and the University of Arkansas Cooperative Extension Service, Cooperative Extension service employees will

provide training at least once a year to MS4s. The training will use materials provided by ExCal Visuals and others that include information on construction sites, park and open space maintenance and fleet and building maintenance.

- Jurisdictional-specific ordinances, policies and mandates will also be addressed during these trainings and specific system maintenance as departmentally appropriate. Training will stress how the employees are the “eye and ears” of the City and that they should learn to recognize signs of illicit discharge and how to properly report these instances. Recommendations from the employees are also addressed during the regional stormwater compliance committee’s monthly meetings, and these recommendations help to shape the educational outreach messages.

Measurable Goals:

- Summary of employee training program(s) implemented with the number of employees that attended.

Rationale

The City will develop and implement an operation and maintenance program. The Program will include a survey of facilities owned and operated by the City. These facilities include the City maintenance shop, two City hall buildings, park facilities and the fire department building. Stormwater BMPs will be incorporated into these facilities if needed. The program will also include written procedures for municipal operations and procedures. Maintenance schedules shall be developed that have control procedures in place to reduce pollutants to the MS4. These procedures will address controls to reduce floatables and other pollutants. Also, procedures to reduce or eliminate the discharges of pollutants from streets, roads, municipal parking lots, maintenance and storage yards, outdoor storage areas and salt/sand storage locations and snow disposal areas. And procedures for the proper disposal of wastes removed from the MS4 and municipal operations, including dredge spoil, accumulated sediments, floatables and other debris. Flood management projects will be assessed in conjunction with the approval of Flood Plain Development as required through the National Flood Insurance Program. Procedures will be developed so that these new projects will be adequately assessed for impacts on water quality and existing projects are assessed for incorporation of additional water quality protection devices or practices.

Staff training will be as part of the contract with the Northwest Arkansas Regional Planning Commission and University of Arkansas Cooperative Extension Service. This regional approach is the most efficient method of delivering staff training. Cooperative Extension service employees will provide training at least once a year to MS4 municipalities. Training will use materials that include information on construction sites, open space maintenance and fleet and building maintenance. Training will stress how the employees are the “Eyes and ears” of the City and that they should learn to recognize signs of illicit discharge and how to properly report these instances. Recommendations from City employees are also addressed during the regional stormwater compliance committee’ monthly meetings and these recommendations help shape the educational outreach messages.

Responsible Parties

The Northwest Arkansas Regional Planning and the University of Arkansas' Cooperative Extension Service have contracted with the municipality to be responsible for the development and implementation of the public education efforts. The City of Tontitown shall oversee these efforts and will address any and all short-falls of the contract product to ensure that all permit requirements are met. The City's various departments will coordinate with various community and watershed groups for other educational and outreach activities beyond the scope of the Cooperative Extension Service's educational contract.

Summary of Measurable Goals

The City will develop a list of municipal facilities and develop BMPs for the facilities as needed. Operations and maintenance procedures will be written for applicable facilities, and activities for the operations and maintenance program will be summarized and reported. In addition, The Northwest Arkansas Regional Planning commission and University of Arkansas Cooperative Extension service will provide stormwater related training to employees. This program will be summarized, and employee attendance will be recorded.

Annual Reporting

The annual report shall document the following:

- a summary of employee training program(s) implemented with the number of employees that attended; and
- a summary of activities and procedures implemented for the operation and maintenance program.

Development/Implementation Schedule

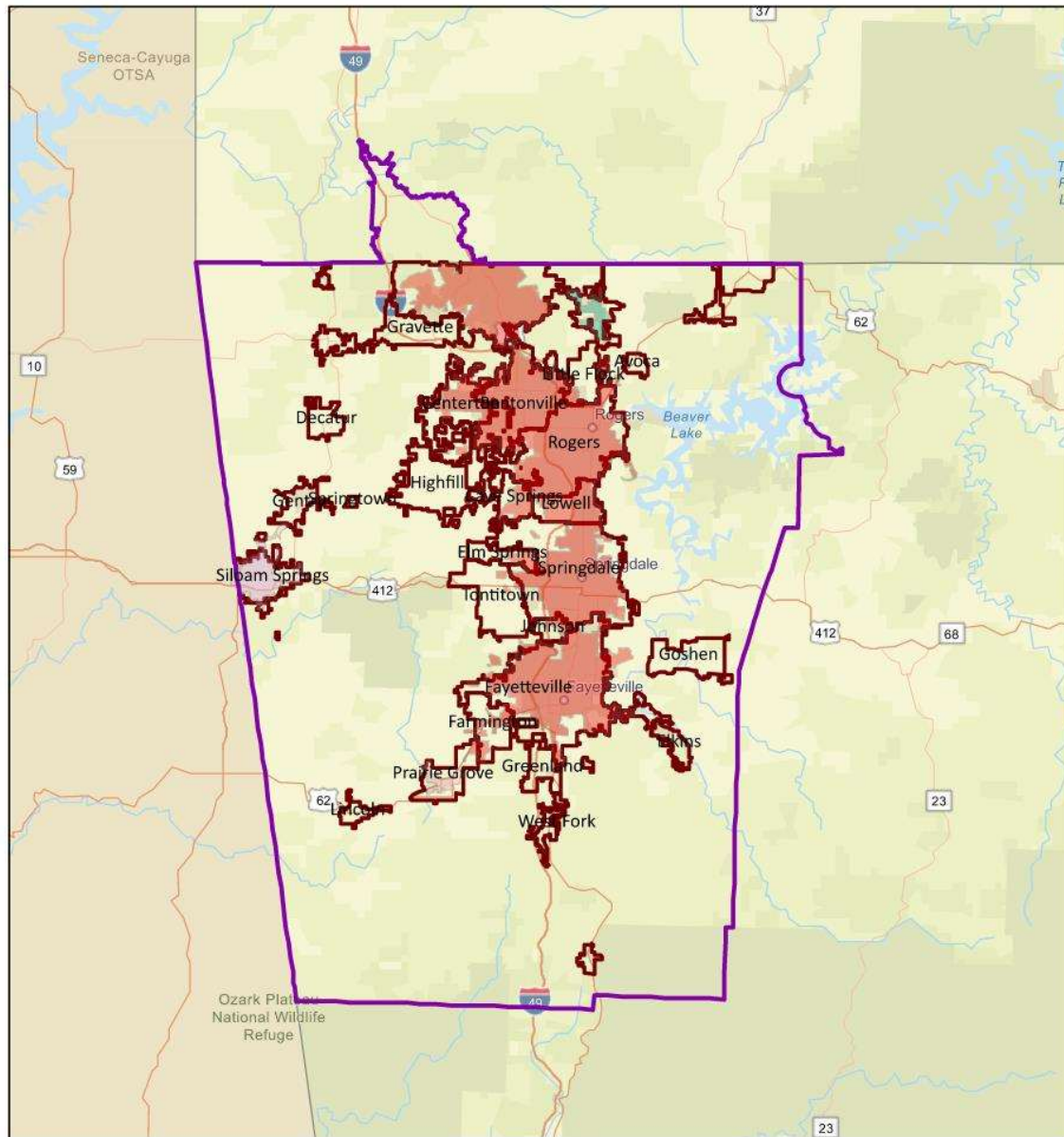
BMP#	PERMIT YR 1	PERMIT YR 2	PERMIT YR 3	PERMIT YR 4	PERMIT YR 5
------	-------------	-------------	-------------	-------------	-------------

OM1	Compile list of facilities and develop BMPs as needed.	Revise and update operations and maintenance (O&M) program and Manual as needed.	Monitor and revise as necessary	Monitor and revise as necessary	Monitor and revise as necessary
OM2	Conduct annual training for employees.	Conduct training as necessary for new hires.	Conduct annual training for employees.	Conduct training as necessary for new hires.	Conduct annual training for employees.

APPENDICES

Appendix A - Additional City of Tontitown Maps

2020 NWA Census Urbanized Areas



6/24/2024, 3:08:04 PM

NWARPC MPA_Boundary_2024

NWA 2020 Census Urban Areas

Fayetteville-Springdale-Rogers, AR-MO

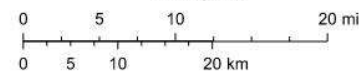
Pea Ridge, AR

Prairie Grove, AR

Siloam Springs, AR-OK

Northwest Arkansas City Limits

1:770,389



City of Springdale, AR, Arkansas GIS Office, Missouri DNR, Texas Parks & Wildlife, Esri, TomTom, Garmin, SafeGraph, FAO, METI/NASA, USGS, EPA, NPS, USFWS

ArcGIS Web AppBuilder

City of Springdale, AR, Arkansas GIS Office, Missouri Dept. of Conservation, Missouri DNR, Texas Parks & Wildlife, Esri, TomTom, Garmin, SafeGraph, METI/NASA, USGS, EPA, NPS, USDA,

Appendix B - Relevant City of Tontitown Municipal Ordinances

By clicking on the codified Code of Ordinances at <https://www.tontitown.com/city-ordinances/>, you can view all ordinances pertaining to stormwater.

Ordinance 2021-06-952

Ordinance 2019-06-847

Ordinance 2005-11-233

Appendix C - Educational Contract

NORTHWEST ARKANSAS AND THE NORTHWEST ARKANSAS REGIONAL PLANNING COMMISSION

WHEREAS, 17 cities in Benton and Washington Counties, the counties themselves, and the University of Arkansas meet the U.S. Environmental Protection Agency's "small" urbanized area municipal separate storm sewer systems (MS4) criteria, and must comply with national Phase II Stormwater Regulations; and

WHEREAS, the Arkansas Energy and Environment – Office of Water Quality (DEQ), the state agency authorized by EPA to issue National Pollutant Discharge Elimination System (NPDES) permits requiring and ensuring compliance, will establish dates for affected entities to be covered under Arkansas' general permit for MS4s; and

WHEREAS, said permit requires development, implementation, and evaluation of a stormwater management plan, that addresses each of the six minimum control measures identified in the Phase II Storm Water Regulations contained in 40 CFR 122.26 and outlined in Part I.B.; and

WHEREAS, the Northwest Arkansas Regional Planning Commission (NWARPC) has coordinated meetings between representatives of affected jurisdictions in an effort to determine, in the interest of economy and efficiency, whether certain stormwater permit components could be addressed collectively, rather than individually; and

WHEREAS, it has been determined that a cost effective, regional approach to certain minimum control measures required as part of the permit – namely Public Education and Outreach, Public Involvement and Participation, and the education component of Pollution Prevention/Good Housekeeping – is both logical and appropriate; and

WHEREAS, the NWARPC previously requested and received statements of qualifications from interested institutions and firms with demonstrated water quality educational expertise, and has, in cooperation with representatives of affected MS4 jurisdictions, endorsed the attached proposal from the University of Arkansas Cooperative Extension Service; and

WHEREAS, the DEQ has endorsed the regional concept and proposal for addressing said minimum control measures; and

WHEREAS, said representatives of affected MS4s have also endorsed the distribution of costs associated with the proposal as shown on the attached cost allocation plan; and

WHEREAS, the Board of Directors of the NWARPC have authorized the Commission to act as the financial clearinghouse and primary contractor, on behalf of said MS4s, in connection with said proposal.

NOW, THEREFORE BE IT RESOLVED THAT WE, THE UNDERSIGNED MS4 JURISDICTION, AND THE BOARD OF DIRECTORS OF THE NORTHWEST ARKANSAS REGIONAL PLANNING COMMISSION, AGREE AS FOLLOWS:

SECTION 1. To participate in a 1-Year Regional Stormwater Education and Coordination Program (January 1, 2024 – December 31, 2024), to be carried out by the University of Arkansas Cooperative Extension Service through an engagement with the Northwest Arkansas Regional Planning Commission, with costs based on a base cost and each jurisdiction's pro-rated share of the region's 2020 urban area population; it being understood that said services to be provided shall satisfy requirements for the federally-mandated minimum control measures referenced herein. Commitments for participation in said program in future years will require governing body approval on a year-to-year basis.


SECTION 2. To participate financially in accordance with the attached cost allocation plan. Any increases in the costs allocated to the undersigned MS4 due to the failure of other MS4 jurisdictions to participate shall be subject to the approval of the undersigned MS4.

SECTION. 3. That all funds received by NWARPC from MS4s shall be utilized in their entirety for stormwater management program services and coordination activities in connection with EPA Phase II Stormwater Program requirements and shall be accounted for separately from all other Commission funds.

Dated this 3rd day of October, 2023.


Mayor Angela Russell

TONTITOWN OFFICIAL


Tim Conkin, Executive Director
NWARPC

Appendix D - Educational Contract's 5-year Task Plan and Targeted Quantities

Urban Stormwater Education Program

University of Arkansas' Division of Agriculture' Cooperative Extension Service

Introduction

As the public education branch of the University of Arkansas' Division of Agriculture, the mission of the Cooperative Extension Service (CES) is to provide research-based information through non-formal education to help Arkansans improve their economic well-being and the quality of their lives. The City of Tontitown is jointly-contracting with CES through the Northwest Arkansas Regional Planning Commission as a successful and cost-effective means of implementing the following minimum control measures required in our Phase II permits:

#1) Public Education and Outreach

#2) Public Involvement and Participation

#6) Pollution Prevention & Good Housekeeping – municipal employee training component

Program Planning and Evaluation

The City of Tontitown participates in monthly meetings of the NWA Stormwater Compliance Group and has representation on the NWA Regional Stormwater Education Steering Committee. The City also has representation on the Stormwater Education Steering committee (public membership comprised of diverse backgrounds/interests) convenes at least once each year to review and evaluate program accomplishments and plan next steps. Both groups provide the localized input used to identify critical stormwater issues and target audiences and program methods and public relations strategies.

BMPs and Measurable Goals

Minimum Control Measure #1 - Public Outreach and Education

Develop and distribute electronic and printed educational materials

Input from both the MS4 Stormwater Compliance Group and Education Steering Committee guides the emphases of electronic and printed educational materials. Once topics have been identified, fact sheets, podcasts, e-learning modules, website content, newsletters, press releases and PSAs will be developed, adapted, and/or gathered for distribution at public meetings, in support of presentations, and with educational displays. Stormwater management and pollution prevention messages will be provided to participating MS4s for inclusion in municipal utility bill mailings to their residents.

Create displays and staff educational booths

Displays highlighting the annual topics of emphasis will be created and set up/staffed at libraries, banks, schools, local festivals, county fairs, etc.

Conduct hand-on youth stormwater/water quality education programs

Educational programs for school youth will focus on the water cycle, watersheds, stormwater dynamics, water quality and pollution prevention using the EnviroScape surface runoff model, groundwater simulator, hands-on exercises from Project WET, Project WILD, and Project Learning Tree and creekside classrooms. Programs conducted will support the Arkansas State Frameworks required curriculum.

Conduct stormwater programs for adult audiences

Educational presentations will be given to illustrate stormwater dynamics, identify potential pollutants and pathways, describe techniques to reduce stormwater pollution and encourage voluntary BMP implementation according to the annual topic/audience emphases outlined in the SWMP.

Measurable Goals:

- A minimum of 20 electronic and printed educational materials will be developed.
- The # of educational materials distributed will be documented.
- Stormwater displays will be created and used at a minimum of 3 events/locales.
- At least 5 stormwater education programs will be conducted for youth audiences.
- At least 5 stormwater education programs will be conducted for adult audiences.

Performance Standard:

Urban stormwater outreach/education programs will reach at least 34 residents (50% of the urban area population).

Minimum Control Measure #2 - Public Participation and Involvement

Train and Utilize Volunteer Educators

“Train-the-trainer” processes will be used to engage public volunteers and educators in teaching stormwater and pollution prevention (e.g. Benton and Washington County Master Gardeners, Master Naturalists, LakeSmart Leaders, etc.)

Conduct Public Participation/Involvement Events

Citizen and youth groups will participate in public involvement events (litter pick up, establishing demonstration rain gardens, planting riparian vegetation, stenciling storm drain inlets, etc.).

Engage Residents in Stormwater Policy Development

Information will be included through multiple outlets (website, newsletters, press releases, etc.) to encourage public input/involvement as MS4 stormwater management policy evolves.

Measurable Goals:

- At least 1 train-the-trainer program will be conducted.
- At least 1 public participation event will be coordinated.

Performance Standard:

At least 5 public participation and involvement activities will be conducted.

Minimum Control Measure #6 – MS4 Employee Training

Train MS4 employees

MS4 employees will be equipped with a knowledge and understanding of how to reduce the potential impact of their municipal operations activities on stormwater quality.

Measurable Goal:

- A minimum of 5 training programs will be conducted for MS4 employees.

Performance Standard:

Training will be conducted for eligible employees annually.

Appendix E - Annual Reports to ADEQ with attached yearly total reports

Annual reports shall be kept as Appendix E after each report is completed.