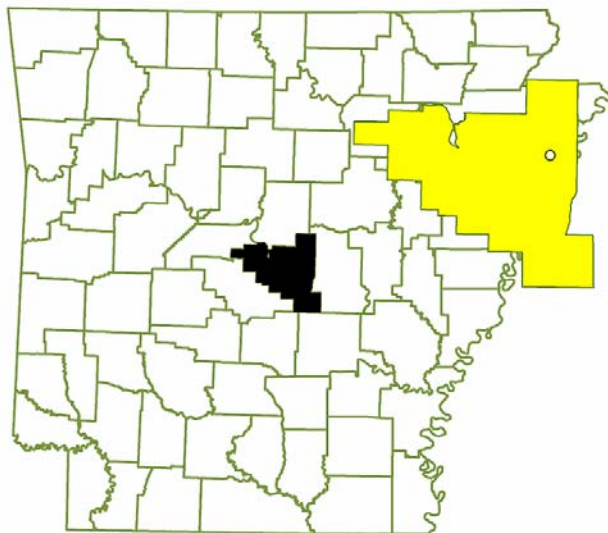


RIXEY IRON AND METAL COMPANY

STATE PRIORITY LIST SITE NORTH LITTLE ROCK, ARKANSAS



ADEQ
5301 Northshore Drive
North Little Rock, Arkansas 72118



EPA RCRA ID No: ARD071255202
EPA CERCLA ID No: N/A
AFIN No: 60-00778
County: Pulaski
Arkansas Senate District: 34
Arkansas House District: 39
US Congressional District: 2

Current Status

The scrap metal facility remains operational, while the transformer recycling business located at the rear of the property ceased operation in 1995. Emergency response activities and interim remedial actions were conducted in 1996 and 2003, respectively. A deed restriction was filed by the land owner on May 7, 2009. The site was removed from the State Priority List on June 3, 2010.

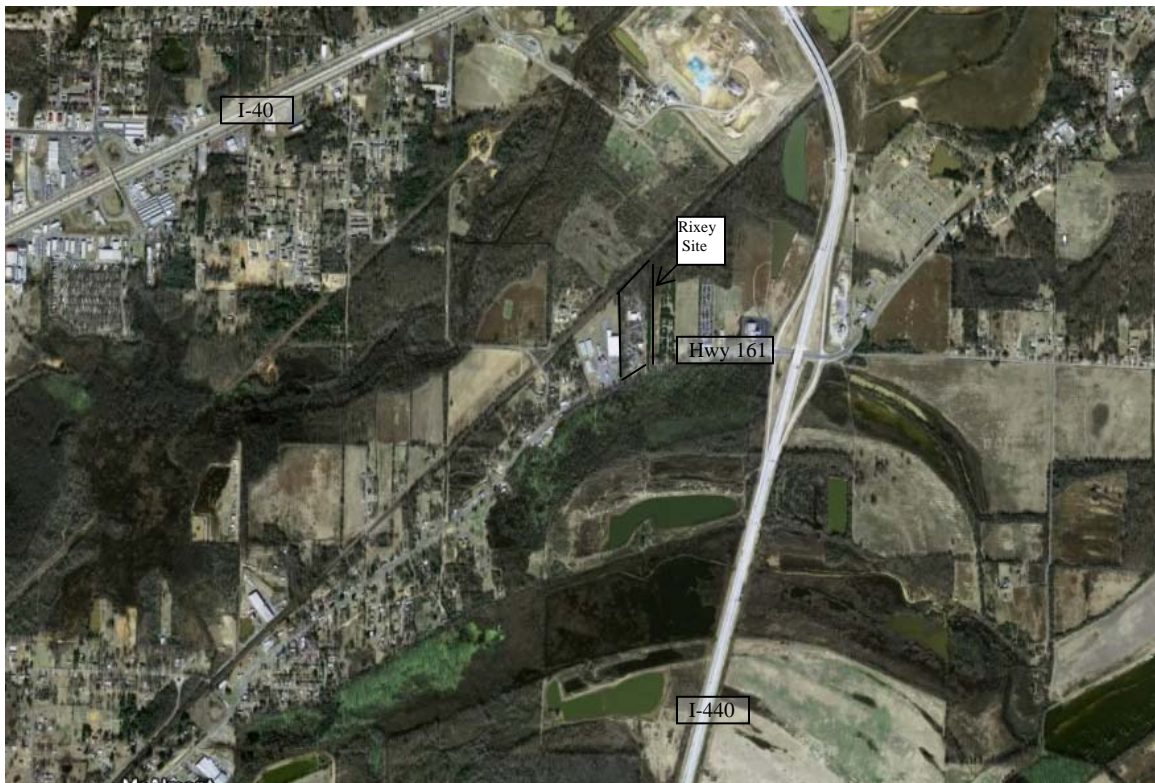
State Priority List History

The site was listed in the Arkansas Pollution Control and Ecology Commission, Regulation No. 30 (Arkansas Remedial Action Trust Fund Hazardous Substance Site Priority List) under the investigation and remediation categories on December 1, 1995. This site was removed from the State Priority List on June 3, 2010.

Site Description

- Location:** The site is located at 8033 Old Jacksonville Highway (Highway 161) in central Pulaski County, Arkansas. It is approximately two (2) miles south of Jacksonville, Arkansas and approximately two (2) miles east of Sherwood, Arkansas. The latitude and longitude coordinates for the site are 34.824167 and -92.159722, respectively.
- Population:** In general the area around the site is not heavily populated by residents. However, there is a small residential area (less than 25 residences) just east of the site.
- Setting:** The facility is approximately 10 acres. A bag manufacturer and a large industrial compressed gas business are located just west of the site. North of the site and across railroads tracks is a commercial area landfill. South of the site and across Highway 161 is a portion of Ink Bayou that is low, marsh land and currently undeveloped.
- Hydrology:** The site is relatively flat lying and gently slopes to the north and east toward the drainage features which carries surface water eastward toward Bayou Meto. A designated wetland was officially identified along the north portion of the site.

Aerial Photo:



Information Repositories: Central Arkansas Public Library (501) 663-5457
Main Library – 100 Rock Street
Little Rock, Arkansas 72201

Central Arkansas Public Library (501) 982-5533
Nixon Branch – 308 W. Main Street
Jacksonville, Arkansas 72076

Jacksonville City Hall (501) 982-0686
#1 Municipal Drive
Jacksonville, Arkansas 72076