

Tankersley/White Dairy

STATE PRIORITY LIST SITE FORT SMITH, ARKANSAS



ADEQ
5301 Northshore Drive
North Little Rock, Arkansas 72118



EPA RCRA ID No: N/A
EPA CERCLA ID No: N/A
AFIN: 66-00163
County: Sebastian
Arkansas Senate District: 13
Arkansas House District: 65
US Congressional District: 3

Current Status

Tankersley/ White Dairy Property, on August 10, 2006, notified the Arkansas Department of Environmental Quality – Hazardous Waste Division (ADEQ-HWD), that they withdrew from the Brownfields Program. This Site was removed from the State Priority List on June 3, 2010.

State Priority List History

The site was included on the Arkansas Pollution Control and Ecology Commission (APC&EC) Regulation No. 30 Remedial Action Trust Fund Act (RATFA) Hazardous Substance Site Priority List (SPL) on October 28, 2005 for investigation purposes. This Site was removed from the State Priority List on June 3, 2010.

Site Description

Location: 1009 Grand Avenue, Fort Smith, Sebastian County, Arkansas.
(35° 23' 12" N latitude; and 94° 25' 10" W longitude)

The deed provided to ADEQ states the property occupies all of block 72 original in the City of Fort Smith, Arkansas

Population: Fort Smith is a metropolitan area with a population of 83,461.

Setting: The site is a closed commercial dairy and meat product processing facility (ice cream and

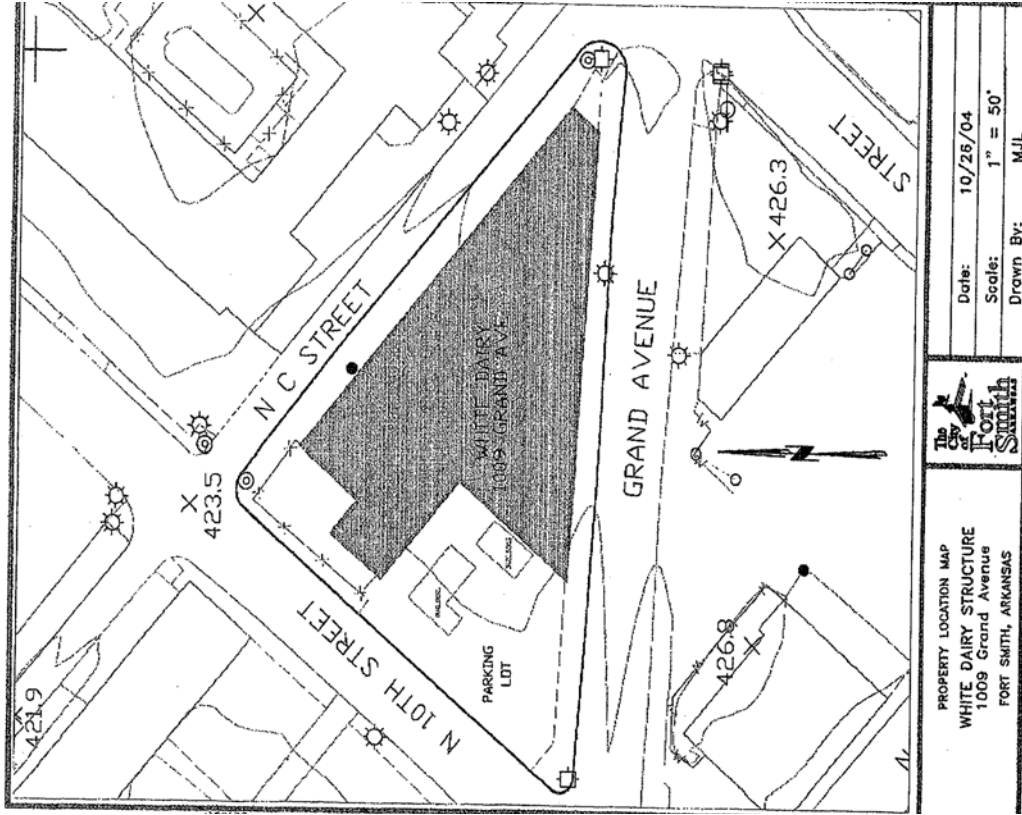
frozen foods) located on less than 1 acre. The dairy and meat product operations closed in 1997. The site was previously occupied by a commercial gasoline station (1925 to 1971). Other businesses on that operated at this site included Fort Smith Packing Company (1928 to approximately 1936) and an auto service garage (1936 to mid 1940's).

Hydrology: The facility is located within the Arkansas Valley Physiographic Province. The stratigraphic summary of the Arkansas Valley is dominated by Pennsylvanian clastic sediments deposited on the margin of a continental shelf primarily by deltas and reorganized in part by marginal marine processes. Structurally the area is made up of broad synclines with relatively narrow intervening anticlines. The axes of these folds generally trend east-west. Most of the observed faulting is normal, but some thrusts faults are noted, associated with anticlines in the southern part of the province. The synclines are often the most conspicuously present positive topographic features, formed from more rapid erosion of underlying shales, once capping sandstones were breached on the crests and flanks of the surrounding anticlines (Information from the website of the Arkansas Geological Commission).

The floodplains deposits of the Arkansas River and significant tributaries deposits are associated with this area of the Arkansas River Valley and are known as Alluvium and Terrace Deposits. The deposits include gravels, sands, silts, clays, and mixtures of any and all of these clastic materials. The stratigraphy of the units below the site is described on the Arkansas Geological Commission (AGC) website (<http://www.state.ar.us/agc/agc.htm>). The Arkansas River is approximately ½ to 1 mile east of the Subject Property (Phase I).

Potable water supply and sewer service was formerly supplied by the City of Fort Smith. No dry wells, irrigation wells, injection wells, or abandoned wells were observed on the Property.

Site Map:



Site Photo:



Waste and Volumes

The Phase I states during the site inspection, multiple floor drains were observed throughout the building structure. The Point of Discharge, as well as the substance historically flushed into these drains is unknown. In addition, approximately twenty-two (22) 1-gallon paint cans, empty and partially filled, were observed on the first floor in a storage room. Two unmarked 55-gallon drums and one smaller unmarked drum, as well as multiple containers of what appear to be waste oil were observed in the main building structure in the engine room, and in a storage room.

In the Laboratory room, 1 bottle of ammonium hydroxide, 2, 1-gallon jars of sulfuric acid, 2, 1-gallon jars of unknown clear liquid, and 1 bottle of an unknown liquid marked "Poison" was observed by the Site assessor. Other containers of chemicals in the laboratory should be inventoried and identified prior to disposal.

One or more underground storage tanks are located on the property. In addition, above ground tanks are present on the property and may contain chemicals.

The freight elevator may be a source of contamination. In addition, the site's building materials and trash should be evaluated.

Health Considerations

Contamination from some oil spills, process waters discharged to the city sewer, and underground storage tanks. There was confirmed petroleum chemicals in the soil and groundwater. However, the extent of contamination in or on soils, sediments, waters, air and facility structures/equipment is unknown.

ADEQ Response Actions

N/A

Tankersley/White Dairy Property withdrew from the Brownfields Program on August 10, 2006.

ADEQ Anticipated Future Activities

N/A

Tankersley/ White Dairy Property withdrew from the Brownfields Program on August 10, 2006.

Site Contacts

Project Coordinator: Tammy Almand (501) 682-0867
almand@adeq.state.ar.us

Information Repository: None officially required