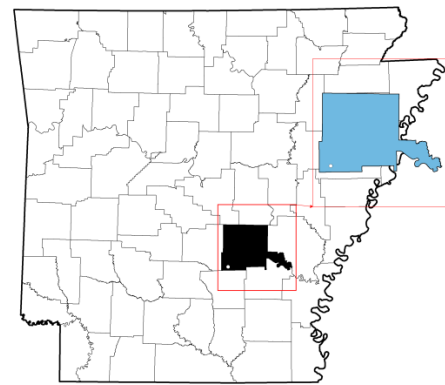




## STATE PRIORITY LIST SITE SUMMARY

Arkansas Department of Energy & Environment, Division of Environmental Quality  
5301 Northshore Drive, North Little Rock, AR 72118

**Facility Name:** Utility Services, Inc.  
**Facility Location:** Pine Bluff, Arkansas  
**EPA RCRA ID No:** AR0000100859  
**EPA CERCLA ID No:** AR0000100859  
**AFIN:** 35-00419  
**County:** Jefferson  
**Arkansas Senate District:** 23  
**Arkansas House District:** 17  
**US Congressional District:** 4



### CURRENT STATUS

Groundwater at the USI site is currently being monitored annually for PCBs. The most recent groundwater sampling event was conducted in December 2019. Six monitoring wells were installed in December 2015 after a major PCB contaminated soil removal effort was completed in February 2015. It is anticipated that the removal of the PCB source area will help contribute to reducing any remaining PCBs in the groundwater.

### STATE PRIORITY LIST HISTORY

The site was added to the SPL in 1993. This listing was predicated on historical contamination that was first documented in the 1980's. In November of 1990, ADEQ personnel conducted an investigation at the Utility Services, Inc. site. The investigation was conducted in response to a complaint received on October 23, 1990. Analysis of samples collected at the site revealed the presence of PCBs, PCP, and tetrachloroethylene. Hazardous substances which had not been released were either stored in 55-gallon drums, five (5) gallon pails, or tanks. ADEQ further determined hazardous substances, including PCBs, PCP, and tetrachloroethane were released or were a potential threat of release at the site. Contamination found at the site included PCB contaminated soils, a concrete secondary containment unit for two (2) 1500 gallon tanks containing high concentrations of PCBs, and two (2) fifty-five gallon drums located in the secondary containment unit with high concentrations of PCBs, trichloroethane, and

tetrachloroethene. Operations to characterize and remove hazardous waste from the site began in October of 1993 and were completed in June of 1994.

## SITE DESCRIPTION

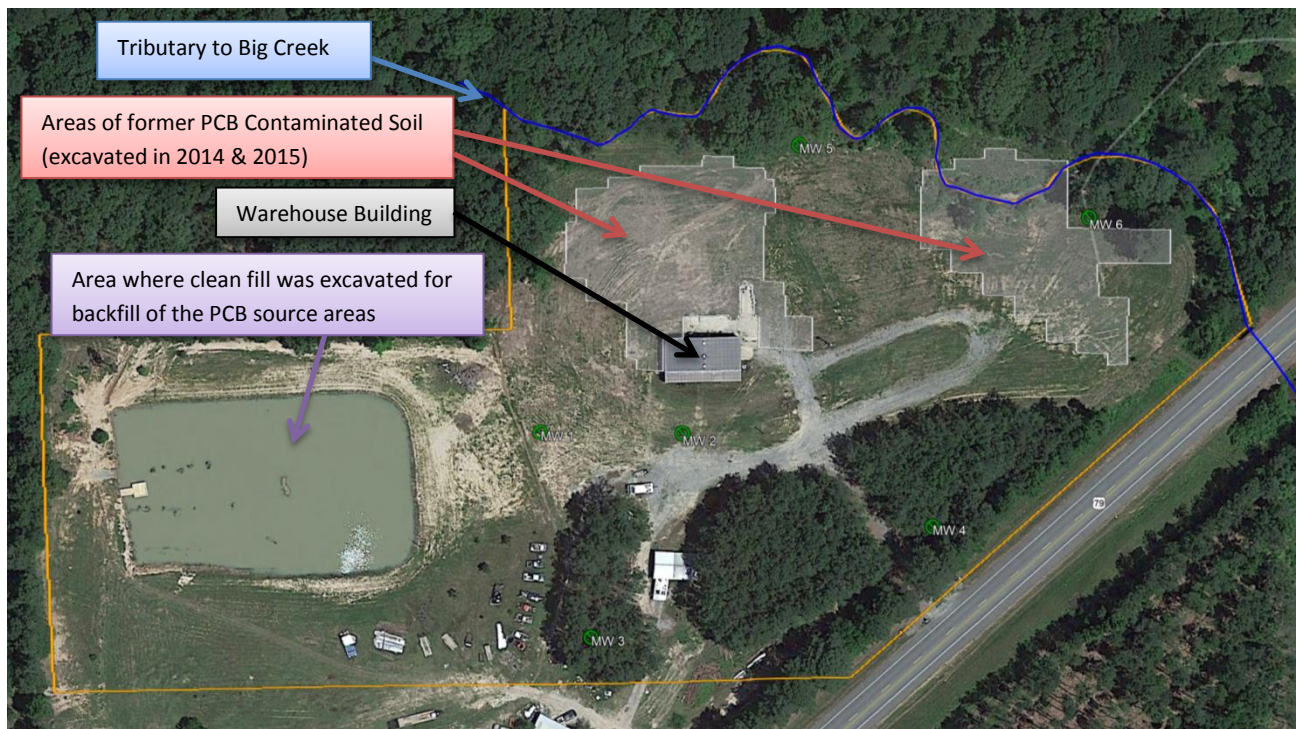
**Location:** The Utility Services, Inc. property is located at 10184 Highway 79 South in Pine Bluff, Jefferson County, Arkansas. The geographical coordinates of the site are 34° 05' 47" latitude North and 92° 09' 25" longitude West.

**Population:** The population within four (4) miles of the Utility Services, Inc. site is approximately 1,400.

**Setting:** The USI property consists of approximately 5 acres of land and located west of Highway 79 South. The site is an inactive facility that is zoned for mixed commercial and agricultural use. A warehouse at the site is currently being used by the site occupants for equipment storage. The site is bordered on all sides by a predominately pine forest.

**Hydrology** The Utility Services, Inc. site lies within the Delta Region of the Gulf Coastal Plain Physiographic Province. Topography in Jefferson County can be divided into three main areas. There are rolling uplands, flatwood uplands, and stream flood plains. Slope in the area of the site ranges from zero (0) to three (3) percent. The site topography is flat to gently sloping having an elevation between 235 and 250 feet above mean sea level.

**Aerial Photo:** Utility Services, Inc.



Site Photos:

Warning Signs Placed on the Warehouse Building



Warning Sign Placed on Entrance to Warehouse Building



## WASTE AND VOLUMES

Approximately 6,200 cubic yards of PCB contaminated soil was removed by Denovo Constructors Inc. in 2014 and 2015. Soil excavation occurred on a majority of the site. The depth of excavation extended as deep as 18 feet in some places. Soil that exceeded 10 ppm was removed. All excavated soil was backfilled with clean fill material. The cleanup and disposal of PCB contamination was conducted in accordance with the Toxic Substances Control Act (TSCA).

## HEALTH CONSIDERATIONS

PCB contaminated soil was removed to levels sufficient to allow for unlimited use and unrestricted exposure. Clean-up levels were based on TSCA regulations and were selected to remove any long term liability.

A section of the foundation slab in the warehouse building was found to contain elevated levels of PCBs that warranted placing a limit on the amount of time spent in the warehouse. In accordance with TSCA Regulation 40 CFR §761.61(a) , the warehouse is classified as a “low occupancy area” where annual occupancy for an individual not wearing dermal and respiratory protection is 335 hours or less (6.7 hours per week). A warning sign was placed on the entrance

to the warehouse building which states “Low-Occupancy Use Area, Caution Room Contains PCBs (Polychlorinated Biphenyl), Structure may be occupied no more than 335 hours per year!”

## DEQ RESPONSE ACTIONS

A fire at the site around February 14, 1991 warranted emergency actions by ADEQ. A Consent Administrative Order (CAO) LIS No. 91-037 was issued by ADEQ to Arkansas Power & Light (now ENTERGY). Arkansas Power & Light responded to the CAO by removing stored free liquids from the tank secondary containment, repacking or over packing all hazardous waste containers, and erecting a fence for site security. The majority of the fencing is now down. On May 12, 1993, ADEQ executed CAO LIS No. 93-078 to Arkansas Power & Light to conduct remedial actions at the site. ADEQ conducted a Preliminary Assessment/Site Inspection (PA/SI) on July 27, 2004, and on May 22, 2007 an Expanded Site Inspection (ESI) was conducted at the site by ADEQ.

ADEQ published a Draft *Remedial Action Decision Document* (RADD) on June 28, 2012 describing the proposed clean-up activities to address historical PCB contamination. A public notice of the Draft RADD was made in the *Pine Bluff Commercial* and is available for public review at the Watson Chapel Public Library. The public review period in which ADEQ accepted comments on ADEQ’s proposed clean-up remedies ended on August 13, 2012. No comments were received and a Final RADD was issued on September 17, 2012.

## DEQ ANTICIPATED FUTURE ACTIVITIES

Groundwater monitoring is ongoing at the site. The next sampling event is scheduled for 2020.

## SITE CONTACTS

**Project Coordinator:** Clay McDaniel  
**Phone Number:** (501) 772-7154  
**Email Address:** [mcdaniel@adeq.state.ar.us](mailto:mcdaniel@adeq.state.ar.us)