

Storm Water Pollution Prevention Plan (SWPPP) Completeness Checklist

Permittee: McGeorge Contracting Co, Inc.
Project Name: DeMoss Sand Pit #1
Project City: Sheridan

Tracking Number: ARR15
Location of SWPPP on-site:

Yes = Complete
No = Incomplete/Deficient
N/A = Not Applicable to project

Yes No N/A

Notes

A. A site description, including:

x			1. Pre-construction topographic view	Part II.A.4.A.1
x			2. Nature of activity and intended use after NOT is filed	Part II.A.4.A.2
x			3. Sequence of major activities	Part II.A.4.A.3
x			4. Total area of site/Disturbed area.	Part II.A.4.A.4
x			5. The runoff coefficient of the site after construction is complete.	Part II.A.4.A.5
x			6. Existing soil or storm water data.	Part II.A.4.A.5

x			B. Responsible Parties: All parties dealing with the SWPPP and the areas they are responsible for on-site.	Part II.A.4.B
---	--	--	---	---------------

x			C. Receiving Waters: Site to ultimate waters	Part II.A.4.C
---	--	--	---	---------------

D. Documentation of permit eligibility related to Impaired Water Bodies and Total Maximum Daily Loads (TMDLs).

		x	1. Are pollutants listed on the 303(d) list or in the TMDLs for the receiving waters addressed in SWPPP?	Part II.A.4.D.1
		x	2. Have pollutants directly related to the site been addressed?	Part II.A.4.D.2-
		x	3. Measures taken to reduce pollutants from the site.	Part II.A.4.D.3

x			E. Documentation of attainment of Water Quality Standards after authorization.	Part II.A.4.E
---	--	--	---	---------------

x			F. Endangered Species information.	Part II.A.4.F
---	--	--	---	---------------

G. Site Map showing:

x			1. Drainage patterns.	Part II.A.4.G.1
x			2. Approximate slopes after major grading.	Part II.A.4.G.1
x			3. Area of soil disturbance.	Part II.A.4.G.2
x			4. Outline of areas which will not be disturbed.	Part II.A.4.G.2
x			5. Location of major structural and non-structural controls.	Part II.A.4.G.3
x			6. Location of main construction entrance and exit.	Part II.A.4.G.4
x			7. Areas where stabilization practices are expected to occur.	Part II.A.4.G.5
		x	8. Locations of off-site materials, waste, borrow area or storage area.	Part II.A.4.G.6
		x	9. Locations of areas used for concrete wash-out.	Part II.A.4.G.7
		x	10. Surface waters.	Part II.A.4.G.8
x			11. Locations where water is discharged to a surface water or MS4.	Part II.A.4.G.9
x			12. Storm water discharge locations.	Part II.A.4.G.10
		x	13.Areas where final stabilization has been accomplished.	Part II.A.4.G.11

H. Description of Controls:

			1. Erosion and sediment controls, including:	
x			a. Initial disturbed areas.	Part II.A.4.H.1.a
x			b. Erosion and Sediment controls to retain sediment on-site.	Part II.A.4.H.1.b
x			c. Replacement of inadequate controls.	Part II.A.4.H.1.c
x			d. Removal of off-site accumulations.	Part II.A.4.H.1.d
x			e. Maintenance of sediment traps/basins @ 50% capacity.	Part II.A.4.H.1.e
x			f. Litter, construction debris and chemicals properly handled.	Part II.A.4.H.1.f
		x	g. Off-site storage areas and controls.	Part II.A.4.H.1.g

Storm Water Pollution Prevention Plan (SWPPP) Completeness Checklist

Permittee: McGeorge Contracting Co, Inc.
Project Name: DeMoss Sand Pit #1
Project City: Sheridan

Tracking Number: ARR15
Location of SWPPP on-site:

Yes = Complete
No = Incomplete/Deficient
N/A = Not Applicable to project

			2. Stabilization practices.	
x			a. Description and schedule for stabilization.	Part II.A.4.H.2.a
x			b. Description of buffer areas.	Part II.A.4.H.2.b
x			c. Records of stabilization.	Part II.A.4.H.2.c
x			d. Deadlines for stabilization.	Part II.A.4.H.2.d

			3. Structural Practices.	
			a. Sediment basins	Part II.A.4.H.3.a.1
x			Are more than 10 acres draining to a common point? If so, are sediment basins included? If not, skip to item 3.b.	Part II.A.4.H.3.a.1
x			Sediment basin dimensions and capacity description and calculations.	Part II.A.4.H.3.a.1
x			Sediment basin outfall type, size, capacity, etc. calculations.	Part II.A.4.H.3.a.1
x			If a basin wasn't practicable, are other controls sufficient?	Part II.A.4.H.3.a.1
			b. Velocity dissipation devices to provide non-erosive flow conditions from the discharge point along the length of any outfall channel.	Part II.A.4.H.3.b

I. Other controls including:

x			1. Waste disposal practices which prevent discharge of solid materials to waters of the State.	Part II.A.4.I.1
x			2. Measures to minimize offsite tracking of sediments by construction vehicles.	Part II.A.4.I.2
x			3. Measures to ensure compliance with State or local waste disposal, sanitary sewer, or septic system regulations.	Part II.A.4.I.4
		x	4.Does the site have a concrete washout area controls?	Part II.A.4.I.5
		x	5. Does the site have fuel storage areas, hazardous waste storage and/or truck wash areas controls?	Part II.A.4.I.6

x			J. Identification of allowable non-storm water discharges	Part II.A.4.J
---	--	--	--	---------------

x			K. Post construction stormwater management.	Part II.A.4.K
---	--	--	--	---------------

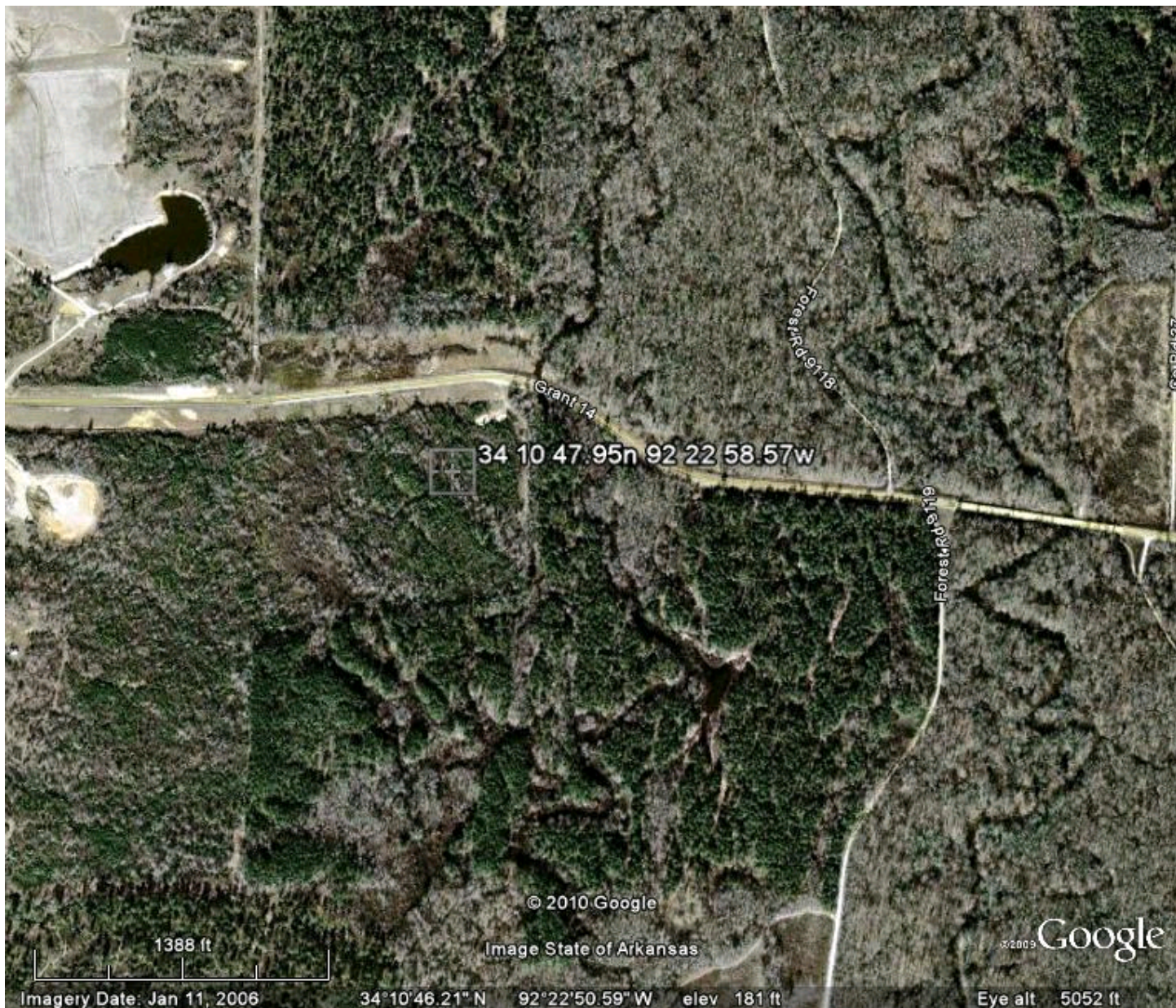
		x	L. State or local requirements incorporated into the plan.	Part II.A.4.L
--	--	---	---	---------------

x			M. Are inspection procedures identified in the plan?	
x			1. Frequency listed?	Part II.A.4.M.1
			2. Inspection form	Part II.A.4.M.2

x			Ours.	
		x	If not ours, does it contain the following items:	
		x	a. Inspector name and title	Part II.A.4.M.2.a
		x	b. Date of inspection.	Part II.A.4.M.2.b
		x	only)	Part II.A.4.M.2.c
		x	d. BMPs used on-site	Part II.A.4.M.2.d
		x	e. If BMPs are in working order and if maintenance is needed (Scheduled and completed)	Part II.A.4.M.2.e
		x	f. Location and dates when major construction activities begin, occur or cease	Part II.A.4.M.2.f
		x	g. Report signature of inspector	Part II.A.4.M.2.g
x			3. Inspection Records	Part II.A.4.M.3
		x	4. Winter Conditions	Part II.A.4.M.4

x			N. Maintenance procedures for control measures identified in the SWPPP.	Part II.A.4.N
---	--	--	--	---------------

x			K. Signed Plan certification.	Part II.A.7. and Part II.B.10
---	--	--	--------------------------------------	-------------------------------



BUSINESS AND COMMERCIAL (UCC) SERVICES**Search Incorporations, Cooperatives, Banks and Ins Companies**[Printer Friendly Version](#)For service of process contact the [Secretary of State's office.](#)

Corporation Name	MCGEORGE CONTRACTING CO., INC.
Fictitious Names	N/A
Filing #	100033845
Filing Type	For Profit Corporation
Filed under Act	Dom Bus Corp; 576 of 1965
Status	Good Standing
Principal Address	
Reg. Agent	W. SCOTT MCGEORGE
Agent Address	FT. OF NEBRASKA ST. PINE BLUFF, AR 71611
Date Filed	01/28/1946
Officers	HASKELL L. DICKINSON II, President W. SCOTT MCGEORGE , Vice-President DREW ATKINSON , Secretary DREW ATKINSON , Treasurer GERALD W. MAJORS , Controller
Foreign Name	N/A
Foreign Address	
State of Origin	N/A

[Purchase a Certificate of Good Standing for this Entity](#)
[Pay Franchise Tax for this corporation](#)

LLC Member information is now confidential per Act 865 of 2007

Use your browser's back button to return to the Search Results

[Begin New Search](#)

SITE MAP

DEMOS SAND PIT #1

APPROX. 10 ACRES

POST CONSTRUCTION
ENTRANCE

ROCK
DITCH
CHECKS

ROCK
DITCH
CHECKS

BRUSH
BARRIERS

STORMWATER FLOW

BRUSH BARRIERS

BRUSH
BARRIERS

SED.
BRAIN

ROCK
DITCH
CHECKS

LIMITS OF
DISTURBANCE

ROCK
DITCH
CHECKS

OUTFALL

McGEORGE CONTRACTING Co., Inc.

General Contractors

P.O. Box 7008



(870) 534-7120

Pine Bluff, Arkansas

71611-7008

March 30, 2010

Arkansas Department of Environmental Quality
NPDES Branch, Water Division
5301 North Shore Drive
North Little Rock, AR 72118-5317

CERTIFIED MAIL

Dear Sirs:

Enclosed is Notice of Intent (NOI) for coverage under Permit No. ARR150000 for the following construction sites:

Site Name

Demoss Sand Pit #1

Please note that this site will be a water retaining pit.

Very Truly Yours,
McGeorge Contracting Company, Inc.

By 
Brian McMillian

cc: PBO, NPDES File, BC

Stormwater Pollution Prevention Plan
For
Construction Activity



National Pollution Discharge Elimination System
General Permit # ARR150000

Prepared for:
Demoss Sand Pit #1

Date: January 13, 2010

StormWater Pollution Prevention Plan
General Permit # ARR150000

Project Name and Location:

Demoss Sand Pit #1, Sheridan, AR

Operator Name and Address:

McGeorge Contracting Co., Inc.

P.O. Box 408, Sweet Home, AR 72164

A. Site Description

- 1) Vicinity Map and Pre-construction Topographic view:

Map inserted: ☒ Yes ☐ No

- 2) Project Description and Intended Use after NOT is filed:

Excavation of Sand material from AHTD Job 020424, Will be a water retaining pond upon completion.

- 3) Sequence of Activities:

Installation of Rock Ditch Checks, Clearing, Construction of Sediment Basin, Installation of brush barriers, Panel Stripping of Overburden Material, Temporary Seeding of Cleared Areas, Excavating of Sand, Placement of Remaining Panels of Overburden into Excavated Areas, Permanent Seeding of Disturbed Areas, After Disturbed Areas have been permanently stabilized removal of Rock Ditch Checks, Brush Barriers, and Obilation of Sediment Basin.

- 4) Total Acres Available/Total Disturbed Area:

50/10

- 5) Existing Site Information:

- a. Runoff Coefficient Based on attachment C:

Before construction starts, the site has a runoff coefficient of 0.05-0.25 for Wooded Area.

After construction is completed, the sit will have a runoff coefficient of 0.05-0.25 for Wooded Area outside Pond, 0 for Pond (water retaining)

- b. Soil Information

Sandy Clay on top 2-3', Course Sand from 3'-15'

B. Responsible Parties-General Contractors, Inspectors, etc:

McGeorge Contracting Co., Inc.

P.O. Box 408

Sweet Home, AR 72164
Jobsite Foreman – Brad Jent, (501) 539-1457

C. Receiving Waters: (pg 19 of Part II)

- 1) Location of Surface Water on Construction Site
The following surface waters are located on the construction site:
There is a small swale in the middle of the site that drains some water from the county road ditch. This water does not flow into any water body, but fans out into the low ground. We will not be impeding the flow of this water but decreasing the flood potential of the area by increasing the capacity by creating a pond. Flooding of the roadway has been a problem, and this will help with the issue.
- 2) The following bodies of water receive runoff from the construction site:
Sand Creek, thence Hurricane Creek, thence Saline River, Thence Ouachita River

D. TMDL and 303(d) list: (http://www.adeg.state.ar.us/water/branch_planning/default.htm)

None

E. Attainment of Water Quality Standards after Authorization: (pg 20 of Part II)

It is expected that this Storm Water Pollution Prevention Plan, properly maintained and updated consistent with Part II.A.4 of the Permit, will ensure that the discharges do not cause or contribute to an excursion above any applicable water quality standards, provided of course, that the ambient rainfall does not already exceed the applicable water quality standard. In the event water quality standards change before the project is completed, the SWPPP and controls will be updated to reflect these revised water quality standards.

F. Endangered Species: US Fish & Wildlife checklist inserted:

☒ Yes ☐ No

G. Site Map: See Attachment A for items to be included.

H. Stormwater Controls

1. Initial Site Stabilization, Erosion, & Sediment Controls: (pg 21 of Part II)
All BMP's will be installed in accordance with the attached design details.
 - a. Initial disturbed areas: The area will be cleared and grubbed, the area will be temporary seeded where required, the first 1 acre panel of 2'-3' overburden will be removed and placed at the western border, and stabilized.
 - b. Erosion and Sediment controls to retain sediment on-site: All areas outside the waste area will not be disturbed thereby providing excellent areas of vegetative borders and brush barriers. Rock check dams will be installed at various locations to prevent any sediment being washed downstream. A stabilized construction entrance will be installed at the north entrance road.
 - c. Replacement of inadequate controls: All control measures will be installed and maintained in accordance with the manufacturer's specifications, and good engineering and construction practices. If a periodic inspection or other information indicates a control has been used inappropriately or incorrectly, the control will be modified or replaced for site situations.
 - d. Removal of off-site accumulations: If sediment escapes the construction site, off site

accumulations will be removed at a frequency sufficient to minimize off-site impacts.

- e. Maintenance of sediment traps/basins @ 50% capacity: Sediment will be removed from sediment traps or sedimentation basins when design capacity has been reduced by 50%
- f. Litter, construction debris and chemicals properly handled: ☒ Yes ☐ No
- g. Off-site storage areas: ☐ Yes ☒ No.
If yes, then what controls are being used:

2. Stabilization Practices: (pg 21 of Part II)

- a. Description and schedule for stabilization: Upon completion of the extended drive, the slopes and top surface will be seeded.
- b. Are Buffer Areas required: ☒ Yes ☐ No
If yes, are the Buffer Areas being used: ☒ Yes ☐ No
If they are required but not being used, please indicate the reason:
- c. Records of Stabilization will be retained for: 3 years
- d. Deadlines for site stabilization: Permanent stabilization will be done as soon as completion of the removal of the sand needed for AHTD Project 020424. If construction activity is not to occur within 14 days, the areas disturbed will be temporary stabilized. The only areas required for permanent stabilization will be the tops of the outside slopes that may be disturbed since the site will be water retaining.

3. Structural Practices: (pg 22 of Part II)

- a. Are more than 10 acres draining to a common point: ☒ Yes ☐ No
If yes, are sediment basins included for the project: ☒ Yes ☐ No
Are the calculations and design for the basin included: ☒ Yes ☐ No
Are the calculations and design for the outfall included: ☒ Yes ☐ No
If a basin is required but not included/practicable, please indicate the reason: A specifically designed sediment basin is being included on a temporary status since the entire site will be water retaining. A initial sediment basin will be installed at the south end of the site with a size of 5' deep, 20' wide, 50' long thereby providing 5000 cf of storage. The initial stripping of the first acre of overburden 2-3' deep will provide 87,120 sf – 130,680 sf of storage, which the storage capacity will increase as the pond increases. Dewatering, if required, will be filtered through appropriate BMP's to eliminate sediment discharge from the site.
- b. Are velocity dissipation devices provided at the discharge points from the site: ☒ Yes ☐ No
If yes, please describe: Rock Check Dams will be placed at the outfall of the sediment basin, with an additional rock check dam approximately 100 ft downstream.
If no, please explain why not: Since the site will be water retaining, there will be no discharge

points. If in the event large volumes of dewatering of the site will be required, velocity dissipation devices will be installed.

I. Other Controls: In addition to erosion control and storm water management, our plan will include measures to properly manage solid wastes, hazardous wastes, dust generation, and all other activities that will generate wastes during the construction phase. (pg 23 of Part II)

1. Solid material control, debris and wastes:

All waste materials will be collected and stored in a securely lidded metal dumpster rented from a licensed solid waste management company located in Arkansas. All trash and construction debris from the site will be deposited in the dumpster. The dumpster will be emptied a minimum of once per week and the trash will be hauled to the appropriate landfill. No construction materials will be buried on-site.

2. Offsite vehicle tracking:

Stabilized Construction Entrances and exits will be utilized to minimize tracking of sediments.

3. Temporary sanitary facilities:

Temporary sanitary facilities will be provided at locations as necessary to optimally service employees. All sanitary waste will be collected from the portable unit a minimum of two times per week by a licensed sanitary waste management contractor.

4. Concrete waste area:

No concrete will be poured on this project.

5. Fuel storage, hazardous materials and truck washing areas:

- No contaminants from fuel storage areas and truck wash areas will be allowed to be discharged to waters of the State.
- Fuel storage tanks will have an SPCCP (Spill Prevention Control and Countermeasure Plan) associated with each area.
- No hazardous materials will be stored on-site.

J. Non-stormwater Discharges: (pg 10 of Part I)

List of Anticipated Allowable Non-Stormwater Discharges:

All non-storm water discharges are prohibited unless in compliance and covered by an NPDES permit (other than this permit), and is provided in the following paragraph.

The following are non-storm water discharges which are authorized by this permit: fire hydrant flushings, wash water (without detergent or spilled material), water used to control dust, waterline flushings using potable water, irrigation drainage, air conditioning condensate, springs, uncontaminated ground water, foundation or footing drains where flows are not contaminated, and fire fighting activities.

K. Post-Construction Stormwater Management: (pg 24 of Part II)

The entire site will be water retaining. Therefore no stormwater discharge will occur. All surrounding areas will drain into the pond upon completion.

L. State or Local Plans: (pg 24 of Part II)

The municipality in which the construction activity occurs will be contacted to determine if there are erosion control and/or storm water runoff requirements in the city code, city ordinances or city permits. All applicable requirements will be met. Documentation of compliance is attached to this SWPPP.

☐ Yes ☒ No

M. Inspections: (pg 24 of Part II)

Inspections will be conducted by a qualified inspector at one of the following frequencies:

☒ **Every 7 days or**

☐ **Every 14 Days and within 24 hours after a ½ inch or greater rainfall event.** (If this option is chosen, a rain gauge is required to be on-site. The SWPPP should also include a daily rainfall log.) A report of the inspection will summarize the scope of the inspection, the name of the inspector, the date of inspection, any damages observed and repairs made to any control measure. Completed inspection forms will be kept with the SWPPP.

The following are the minimum inspection, maintenance and reporting practices that will be used to maintain erosion and sediment controls at our construction site:

1. Inspection form (Attachment B)
2. All controls will be inspected to ensure that they meet the manufacture's specifications.
3. All site entrances and exits will be checked to ensure no off-site tracking.
4. All inspection reports will be maintained for a minimum of 3 years after permit termination.
5. In addition to inspection, records will be kept of the following:
 - a. Dates when major grading activities occur
 - b. Dates when construction activities cease in an area, temporarily or permanently.
 - c. Dates when an area is stabilized, temporarily or permanently.

N. Maintenance: All erosion and sediment control measure will be maintained in good working order. If a repair is necessary, it will be completed **within three (3) business days of discovery** (pg 25 of Part II): ☒ Yes ☐ No. If no, please explain the reason:

Contractors: (pg 25 of Part II)

All contractors should be identified in the plan. If additional room is required, please attach a blank page with information after the plan certification.

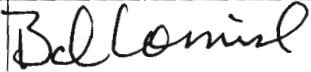
Contractor Printed Name:	McGeorge Contracting	Contractor Signature:	
Contractor Contact Number:	501-490-1456	Responsible for:	All Construction and Maintenance of E.C. Items
Contractor Printed Name:		Contractor Signature:	
Contractor Contact Number:		Responsible for:	
Contractor Printed Name:		Contractor Signature:	
Contractor Contact Number:		Responsible for:	

2. All controls will be inspected to ensure that they meet the manufacture's specifications.
3. All site entrances and exits will be checked to ensure no off-site tracking.
4. All inspection reports will be maintained for a minimum of 3 years after permit termination.
5. In addition to inspection, records will be kept of the following:
 - a. Dates when major grading activities occur
 - b. Dates when construction activities cease in an area, temporarily or permanently.
 - c. Dates when an area is stabilized, temporarily or permanently.

N. Maintenance: All erosion and sediment control measure will be maintained in good working order. If a repair is necessary, it will be completed **within three (3) business days of discovery** (pg 25 of Part II): ☒ Yes ☐ No. If no, please explain the reason:

Contractors: (pg 25 of Part II)

All contractors should be identified in the plan. If additional room is required, please attach a blank page with information after the plan certification.

Contractor Printed Name:	McGeorge Contracting	Contractor Signature:	
Contractor Contact Number:	501-490-1456	Responsible for:	All Construction and Maintenance of E.C. Items
Contractor Printed Name:		Contractor Signature:	
Contractor Contact Number:		Responsible for:	
Contractor Printed Name:		Contractor Signature:	
Contractor Contact Number:		Responsible for:	
Contractor Printed Name:		Contractor Signature:	
Contractor Contact Number:		Responsible for:	


Inspectors: (pg 25 of Part II)

Site inspectors should be identified in the plan. If additional room is required, please attach a blank page with information after the plan certification.

Inspector Printed Name:	Brad Jent	Inspector Signature:	
Inspector Contact Number:	501-539-1457		
Inspector Printed Name:		Inspector Signature:	
Inspector Contact Number:			

Plan Certification: (pg 26 of Part II)

"I certify under penalty of law that this document and all attachments were prepared under my direction or supervision in accordance with a system designed to assure that qualified personnel properly gather and evaluate the information submitted. Based on my inquiry of the person or persons who manage the system, or those persons directly responsible for gathering the information, the information submitted is, to the best of my knowledge and belief, true, accurate, and complete. I am aware that there are significant penalties for submitting false information, including the possibility of fine and imprisonment for knowing violations."

Printed Name: Bob Cornish
Printed Title: Superintendent
Signature: 
Date:

Please note that Attachments C-E do not have to be submitted with the SWPPP.

Attachment B

STORMWATER POLLUTION PREVENTION PLAN
INSPECTION AND MAINTENANCE REPORT FORM

INSPECTOR: _____ DATE: _____

DAYS SINCE LAST RAINFALL: _____ AMOUNT OF LAST RAINFALL _____

AREA	DATE SINCE LAST DISTURBED	DATE OF NEXT DISTURBANCE	STABILIZED (YES/NO)	STAB. WITH CONDITION

STABILIZATION REQUIRED:

SILT FENCE

IS THE BOTTOM OF THE FABRIC STILL BURIED? _____

IS THE FABRIC TORN OR SAGGING? _____

ARE THE POSTS TIPPED OVER? _____

HOW DEEP IS THE SEDIMENT? _____

MAINTENANCE REQUIRED FOR SILT FENCE: _____

SEDIMENT BASIN

DEPTH OF SEDIMENT IN BASIN? _____

CONDITION OF BASIN SIDE SLOPES? _____

ANY EVIDENCE OF OVERTOPPING OF THE EMBANKMENT? _____

CONDITION OF OUTFALL FROM SEDIMENT BASIN? _____

MAINTENANCE REQUIRED FOR SEDIMENT BASIN: _____

CONSTRUCTION EXIT

DOES MUCH SEDIMENT GET TRACKED ON TO ROAD? _____

IS THE GRAVEL CLEAN OR FILLED WITH SEDIMENT? _____

DOES ALL TRAFFIC USE THE STABILIZED EXIT TO LEAVE THE JOB SITE? _____

IS THE CULVERT BENEATH THE EXIT WORKING? _____

MAINTENANCE REQUIRED FOR CONSTRUCTION EXIT: _____

CHANGES TO BE PERFORMED BY: _____ ON OR BEFORE: _____

CHANGES REQUIRED TO THE STORMWATER POLLUTION PREVENTION PLAN:

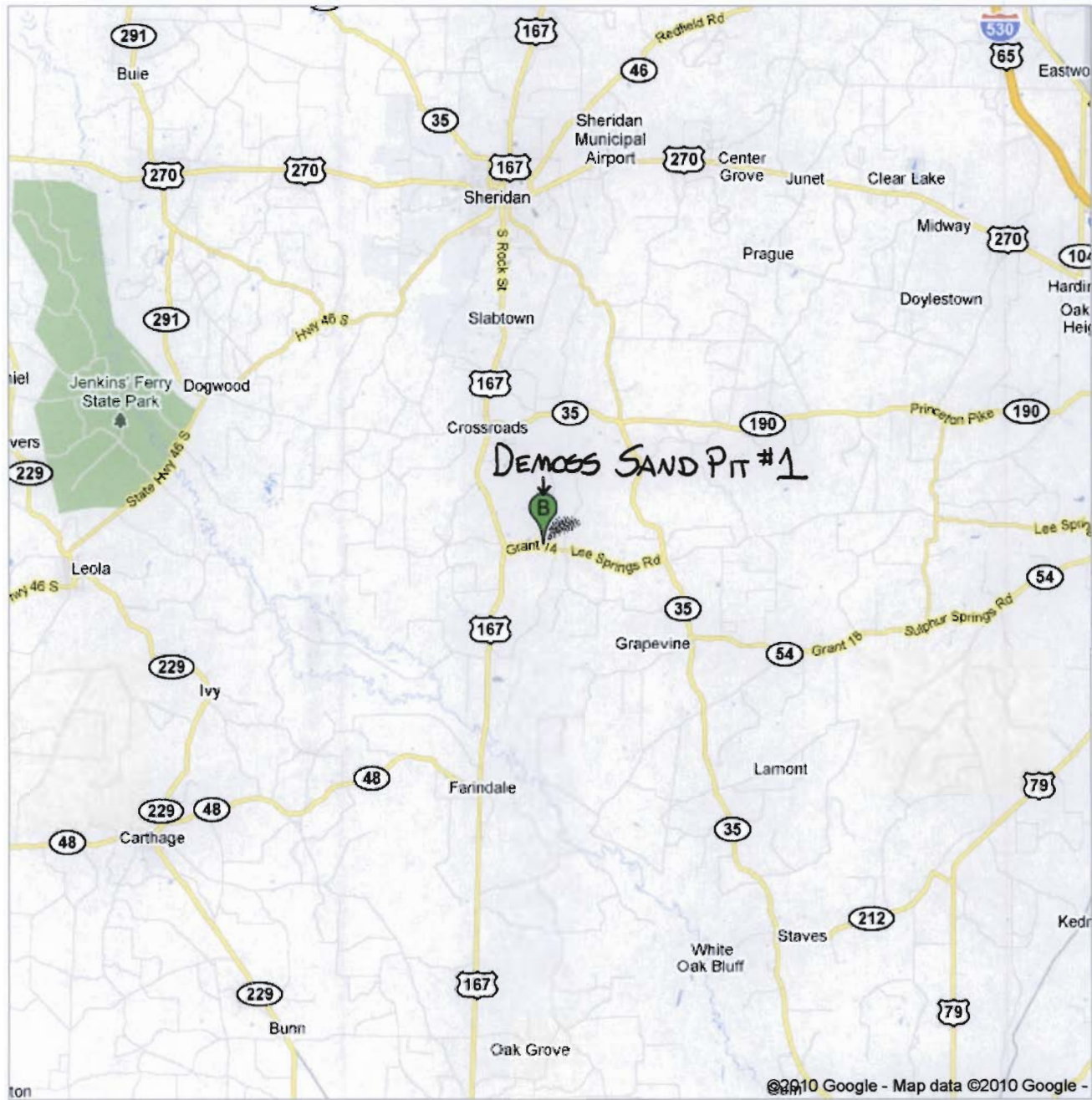
REASONS FOR CHANGES:

"I certify under penalty of law that this document was prepared under my direction or supervision. The information submitted is, to the best of my knowledge and belief, true, accurate, and complete. I am aware that there are significant penalties for submitting false information, including the possibility of fine and imprisonment for knowing violations."

Signature _____

Date _____

For additional information, please use a separate page.

**Save trees. Go green!**Download Google Maps on your phone at google.com/gmm

Gallagher, Amanda

From: Brian McMillian [Brian.McMillian@mcgeorgecontracting.com]
Sent: Monday, April 19, 2010 4:01 PM
To: Gallagher, Amanda
Subject: RE: McGeorge Contracting DeMoss Sand Pit 1_SWPPP Review, Page 3 of SWPPP

Amanda:

Sorry about page 3. That might have cleared up the question below in the Receiving Waters section. What is showing on the site map is not really a creek. It's a swale that drains/retains water from the ditch running along the county road. Like I mention in the SWPPP, it doesn't really flow into anything, but really just holds water and eventually fans out across the low ground. I think it was simply a low area and when they built the county road, it became a place that water drained into from the ditches. Hope that clears it up, if not let me know.

From: Gallagher, Amanda [mailto:gallagher@adeq.state.ar.us]
Sent: Monday, April 19, 2010 12:27 PM
To: Brian McMillian
Subject: RE: McGeorge Contracting DeMoss Sand Pit 1_SWPPP Review

Can you answer the following?

There appears to be a creek on the site map. Will this be removed or changed? Corps of Engineers may need to be notified. Also a Short Term Activity Authorization may be needed from ADEQ if work will be performed in a waterway. This need clarification.

Amanda Gallagher
General Permits-Water Division
Arkansas Department of Environmental Quality
501-682-0621

-----Original Message-----

From: Brian McMillian [mailto:Brian.McMillian@mcgeorgecontracting.com]
Sent: Monday, April 19, 2010 10:36 AM
To: Gallagher, Amanda
Subject: FW: McGeorge Contracting DeMoss Sand Pit 1_SWPPP Review

Part 2 of 2

From: Brian McMillian
Sent: Monday, April 19, 2010 8:51 AM
To: 'Gallagher, Amanda'
Subject: FW: McGeorge Contracting DeMoss Sand Pit 1_SWPPP Review

Here are the attachments again. Thanks.

Brian

From: Brian McMillian
Sent: Tuesday, April 06, 2010 9:11 AM
To: 'Gallagher, Amanda'

Subject: RE: McGeorge Contracting DeMoss Sand Pit 1_SWPPP Review

Amanda:

Attached is the revised SWPPP and Site Map that should address all the items on the checklist. I highlighted the items in the SWPPP that I revised. Let me know if you need anything else or something else need to be fixed. The note about the surface waters I hope clears up the issue with the apprenent "creek". Like I mention in the SWPPP, it is only simply a small swale that drains water from the county road ditch and it doesn't drain to any waterbody, just simply fans out through the low ground. Also the inspection form used is ADEQ's and should have been included.

Thanks.

Brian

From: Gallagher, Amanda [mailto:gallagher@adeq.state.ar.us]
Sent: Wednesday, March 31, 2010 4:14 PM
To: 'brian.mcmillian@mcgeorgecontracting.com'
Subject: FW: McGeorge Contracting DeMoss Sand Pit 1_SWPPP Review

The date below should be 04/14/2010. Sorry for the mix up.

Amanda Gallagher
General Permits-Water Division
Arkansas Department of Environmental Quality
501-682-0621

-----Original Message-----

From: Gallagher, Amanda
Sent: Wednesday, March 31, 2010 3:31 PM
To: 'brian.mcmillian@mcgeorgecontracting.com'
Subject: McGeorge Contracting DeMoss Sand Pit 1_SWPPP Review

Brian,

The Department is in receipt of the Notice of Intent (NOI), permit fee and Stormwater Pollution Prevention Plan (SWPPP) for the above mentioned project. Attached is the checklist that was used for review of the SWPPP. The items marked "NO" should be addressed and submitted no later than 03/03/10. Until a complete SWPPP and NOI have been received by the Department, the two week review time does not begin. Commencement of construction can not begin until a permit has been issued by the Department. If you have any questions on the checklist or other items, just give me a call.

Thanks,

Amanda Gallagher
General Permits-Water Division
Arkansas Department of Environmental Quality
501-682-0621

-----Original Message-----

From: Rice, Melinda
Sent: Wednesday, March 31, 2010 9:15 AM
To: Gallagher, Amanda

Subject: FW: E-mail_from_your_Division's_Stormwater_Construction_Page

Mendy Rice
General Permits
ADEQ
Phone # 501-682-0623
rice@adeq.state.ar.us

-----Original Message-----

From: Brian McMillian [mailto:Brian.McMillian@mcgeorgecontracting.com]
Sent: Tuesday, March 30, 2010 2:23 PM
To: Water Permit Application
Subject: E-mail_from_your_Division's_Stormwater_Construction_Page

Dear Sirs/Madam:

Attached is NOI, SWPPP, Site Map, and Endangered Species Form for a borrow pit, named Demoss Sand Pit #1. This is an existing posted small site with a SWPPP that due to construction needs, it will be expanded beyond 5 acres. No clearing or soil disturbing has progressed beyond this 5 acres until the Notice of Coverage is received. This entire site will be water retaining, i.e. constructing a pond. Please let me know if you have any questions or need any additional information. Originals and \$200 check to be followed by mail. Thanks.

Brian McMillian, PE
McGeorge Contracting Co., Inc.
P.O. Box 408
Sweet Home, AR 72164
501-539-1422 (Cell)
501-490-1456 (Office)
501-490-0036 (Fax)
brian.mcmillian@mcgeorgecontracting.com

SITE MAP

DEMOS SAND PIT #1
APPROX. 10 ACRES

Rock
CONSTRUCTION
ENTRANCE

Rock
DITCH
CHECKS

STORMWATER FLOW

BRUSH BARRIERS

SED.
BASIN

BRUSH BARRIERS

LIMITS OF
DISTURBANCE

OUTFALL

Rock
DITCH
CHECKS



Endangered and Threatened Species Evaluation Form

The enclosed endangered and threatened species evaluation form may be used to obtain clearance, in most instances, from the U. S. Fish and Wildlife Service when applying for a NPDES or SWPPP permit from the Arkansas Department of Environmental Quality (ADEQ). Incomplete packages may delay evaluation of the proposed project and ultimately the issuance of your ADEQ permit.

Return the completed form and following information to:

U. S. Fish and Wildlife Service
Arkansas Field Office
110 South Amity Road, Suite 300
Conway, Arkansas 72032

Please include:

1. A letter detailing the proposed project, a project name, the county in which the project occurs, the estimated disturbance area, geographic coordinates of the project location, and an address to where the Service should send a response.
2. A high quality detailed map (ie: USGS quadrangle map and aerial photo) that contains an outline/polygon of the proposed project disturbance area.

If there is a question that you cannot answer on this evaluation form or a concurrence letter is required from the U.S. Fish and Wildlife Service, send the above information to the U.S. Fish and Wildlife Service's Arkansas Field Office, via Fax, mail, or e-mail. (Fax number (501) 513-4480, e-mail address Arkansas_ES_Clearance@fws.gov, or mail to the address above; for assistance and questions call (501) 513-4470).

Include the completed form in your request for an ADEQ storm water permit.

Endangered and threatened species consultation requests are processed in the order they are received. Response to endangered species consultation requests that require more detailed biologist evaluation may take as long as 30 days after they were received by this office. If you have any questions or concerns please call (501)-513-4470.

U. S. Fish and Wildlife Service comments and recommendations are provided in accordance with the Endangered Species Act (87 Stat. 84, as amended: 16 U.S.C. 1531 et seq.) and Bald and Golden Eagle Protection Act (16 U.S.C. 668-668c).

INSTRUCTIONS

Evaluate individual project sites for federally listed threatened or endangered species using the step process presented below.

STEP 1

Does your project occur within one of the following counties? **Projects occurring in the counties listed below may proceed to Step 10.**

Cleveland ☐
Lonoke ☐
Nevada ☐

Projects not occurring in one of the aforementioned counties must proceed to Step 2.

STEP 2

Does your project occur within 660 feet of a bald eagle nest?

Yes ☐ **See instructions below.**
No ☒ **All other projects proceed to Step 3.**

Projects occurring within 660 feet of a bald eagle nest, including alternate nests, are likely to disturb nesting bald eagles (a potential violation of the Bald and Golden Eagle Protection Act). Proceed to the U. S. Fish and Wildlife Service website (<http://www.fws.gov/southeast/es/baldeagle>) to determine if the new or intermittent activity is likely to disturb nesting bald eagles and measures that you can take to avoid that disturbance. **Print three copies of the signature (Determination) page and submit one with your ADEQ permit application package, submit one copy to the U. S. Fish and Wildlife Service at 110 South Amity Road Suite 300, Conway, AR, and keep one copy for your records.**

Once the above is completed, projects occurring in Greene or Lincoln counties proceed directly to Step 10, all others proceed to Step 3.

STEP 3

Does your project occur within 0.5 mile of a red-cockaded woodpecker cavity **AND** within one of the following counties?

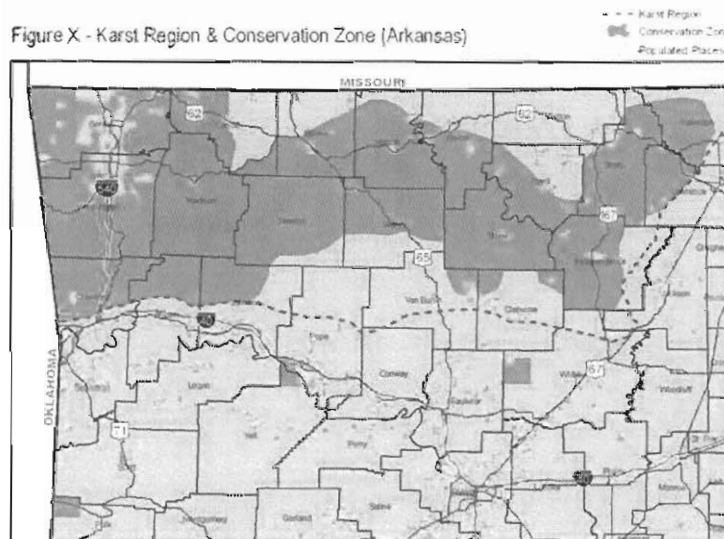
Yes ☐ See instructions below and then proceed to Step 4.
No ☒ Proceed to Step 4.

Ashley	<input type="checkbox"/>	Grant	<input type="checkbox"/>
Bradley	<input type="checkbox"/>	Lafayette	<input type="checkbox"/>
Calhoun	<input type="checkbox"/>	Monroe	<input type="checkbox"/>
Clark	<input type="checkbox"/>	Polk	<input type="checkbox"/>
Columbia	<input type="checkbox"/>	Scott	<input type="checkbox"/>
Dallas	<input type="checkbox"/>	Union	<input type="checkbox"/>
Drew	<input type="checkbox"/>		

If you answered "Yes" to Step 3, refer to the U. S. Fish and Wildlife Service Private Lands Guidelines (http://www.fws.gov/rcwrecovery/private_lands_guidelines.pdf) for potentially harmful activities that may harass and/or harm red-cockaded woodpeckers (a violation of the Endangered Species Act). **Checking "Yes" to Step 3 requires a concurrence letter from the U. S. Fish and Wildlife Service that should accompany your ADEQ permit application package and possibly a permit from the U. S. Fish and Wildlife Service (501-513-4481).** Any and all other endangered species issues will be evaluated when your information is submitted to the U.S. Fish and Wildlife Service.

STEP 4

Does your project occur within the delineated karst conservation zone (see map below)?



Yes ☐ See instructions below and then proceed to Step 5.
No ☒ Proceed to Step 5.

If you answered "Yes" to Step 4, contact the US Fish and Wildlife Service (Service) Arkansas Field Office (501-513-4477) in advance of permit application as a concurrence letter from the Service may be necessary as a part of your NPDES/SWPPP application package. It may also require a Service section 10 endangered species permit. While the Service is interested in the proposed project due to its location, many areas within the karst conservation zone only require the standard recommendations below. Early contact with this office allows time to develop site specific recommendations which streamlines the permit issuance process. Any and all other endangered species issues will be evaluated when your information is submitted to the U.S. Fish and Wildlife Service. If the proposed project falls outside the delineated karst conservation zone but within karst counties (region), the following recommendations apply. If there are any questions on the recommendations, do not hesitate to contact the U. S. Fish and Wildlife Service.

The karst region in Arkansas is as an area with a relatively shallow soil profile where climatic events or stormwater runoff quickly infiltrates and is transported through underground passages contributing to the groundwater basin. The karst region in Arkansas supports 6 endangered species including the Ozark cavefish (*Amblyopsis rosae*), the Benton cave crayfish (*Cambarus aculabrum*), the Hell creek crayfish (*Cambarus zophonastes*), the gray bat (*Myotis grisescens*), the Indiana bat (*Myotis sodalis*), the Ozark big-eared bat (*Corynorhinus townsendii ingens*), and 19 globally imperiled karst dependent species.

If your project occurs outside the delineated karst conservation zone (map above) but within other portions of the nineteen karst counties (karst region), the Service recommends the following conservation measures.

- 1) Survey for karst features including caves, springs, and sinkholes prior to initiating project activities. If such a feature is found, establish a 300 foot conservation zone around its location and contact the Service for an onsite karst evaluation.
- 2) If caves are excavated during construction activities, the Service requests that work efforts cease within 300 feet of the opening. The opening should be adequately marked, fill material should not be placed in the cave, personnel shouldn't enter the cave, and the Service should be contacted immediately for an onsite evaluation.
- 3) While sediment mobilization is the primary concern during construction; stormwater runoff following project completion may contain oil/grease, sealants, tar, brake dust, herbicides, pesticides, and additional sediment. To reduce threats to surface and groundwater from these contaminants, the Service recommends the use of post construction stormwater management techniques including detention basins or separation systems with a 100 foot bioswale. However, other post

construction stormwater management methods are available, these would be considered if documentation of successful use is provided to the Service prior to installation.

- 4) Apply and maintain construction BMP's that were developed specific for the project site.

Proceed to Step 5.

STEP 5

Does your project occur involve instream activities (bridges, bank rip-rap, culverts, channel alteration, etc.) **AND** occur in one of the following streams?

- | | |
|---|--------------------------|
| Alum Fork Saline River | <input type="checkbox"/> |
| Archey Fork Little Red River | <input type="checkbox"/> |
| Bayou Dorcheat | <input type="checkbox"/> |
| Beech Fork Little Red River | <input type="checkbox"/> |
| Big Creek (south flowing tributary to Little Red River) | <input type="checkbox"/> |
| Black River | <input type="checkbox"/> |
| Buffalo Creek (Polk County) | <input type="checkbox"/> |
| Caddo River | <input type="checkbox"/> |
| Clabber Creek | <input type="checkbox"/> |
| Cossatot River | <input type="checkbox"/> |
| Current River | <input type="checkbox"/> |
| Devils Fork Little Red River | <input type="checkbox"/> |
| Ditches, sloughs, and bayous in the St. Francis River basin | <input type="checkbox"/> |
| Eleven Point River | <input type="checkbox"/> |
| Fiddler's Creek (Montgomery County) | <input type="checkbox"/> |
| Fourche La Fave River (Scott County) | <input type="checkbox"/> |
| Frog Bayou | <input type="checkbox"/> |
| Gailey Hollow (Benton County) | <input type="checkbox"/> |
| Healing Spring (Washington County) | <input type="checkbox"/> |
| Illinois River | <input type="checkbox"/> |
| Irons Fork Ouachita River (Montgomery and Yell counties) | <input type="checkbox"/> |
| L'Anguille River | <input type="checkbox"/> |
| Left Hand Chute Little River | <input type="checkbox"/> |
| Little Missouri River | <input type="checkbox"/> |
| Little River | <input type="checkbox"/> |
| Middle Fork Little Red River | <input type="checkbox"/> |
| Middle Fork Saline River | <input type="checkbox"/> |

- | | |
|--|--------------------------|
| Mississippi River | <input type="checkbox"/> |
| Mountain Fork Little River | <input type="checkbox"/> |
| Muddy Creek (Montgomery County) | <input type="checkbox"/> |
| Mulberry River | <input type="checkbox"/> |
| Myatt Creek (Fulton County) | <input type="checkbox"/> |
| North Fork Ouachita River | <input type="checkbox"/> |
| North Fork Saline River | <input type="checkbox"/> |
| Osage Creek and spring fed tributaries | <input type="checkbox"/> |
| Ouachita River | <input type="checkbox"/> |
| Palmer Hollow (Benton County) | <input type="checkbox"/> |
| Poteau River | <input type="checkbox"/> |
| Right Hand Chute Little River | <input type="checkbox"/> |
| Robinson Creek | <input type="checkbox"/> |
| Saline River (both Saline Rivers) | <input type="checkbox"/> |
| South Fork Little Red River | <input type="checkbox"/> |
| South Fork Ouachita River | <input type="checkbox"/> |
| South Fork Saline River | <input type="checkbox"/> |
| South Fork Spring River | <input type="checkbox"/> |
| St. Francis River | <input type="checkbox"/> |
| Strawberry River | <input type="checkbox"/> |
| Turkey Creek (Little Red River) | <input type="checkbox"/> |
| Tyronza River | <input type="checkbox"/> |
| White River (downstream of Batesville) | <input type="checkbox"/> |
| Wildcat Creek (Washington County) | <input type="checkbox"/> |
| Wilson Spring (Washington County) | <input type="checkbox"/> |

Yes ☐ See instructions below.
 No ☒ Proceed to Step 6.

If you answered "Yes" to Step 5, a concurrence letter from the U. S. Fish and Wildlife Service should accompany your ADEQ permit application package. **MUSSEL SURVEYS MAY BE REQUIRED BY THE U. S. FISH AND WILDLIFE SERVICE PRIOR TO THEIR CONCURRENCE ON THE PROJECT.** Planning ahead is strongly advised in this situation. Any and all other endangered species issues will be evaluated when your information is submitted to the U.S. Fish and Wildlife Service.

STEP 6

Does your project occur within 0.5 mile of the Arkansas River, White River, Mississippi River, or Red River?

Yes ☐ Follow instructions below.
No ☒ Proceed to Step 7.

If you answered "Yes" and are willing to implement the recommendations below, a concurrence letter from the U. S. Fish and Wildlife Service is not necessary and you can proceed to Step 7. If you are unable to implement the guidelines below, a concurrence letter from the U. S. Fish and Wildlife Service should accompany your ADEQ permit application package. Implementing the following U. S. Fish and Wildlife Service guidelines will prevent harassment and/or harm of Interior Least Tern populations.

1. The critical nesting period for the Interior Least Tern is between 15 May and 1 August. Nesting may extend beyond these dates depending on river stage elevations. If surveys reveal Interior Least Tern breeding activities within 0.5 mile of a proposed activity during this time period, no activity should proceed unless otherwise approved by the U. S. Fish and Wildlife Service (501-513-4470).
2. No activities should take place closer than 1,000 feet of the shoreline of a nesting colony location. The U. S. Fish and Wildlife Service should be contacted for further consultation if activities are to proceed within 1,000 feet of the shoreline of a nesting colony location. Limited construction outside of the active nesting season may not affect Interior Least Tern. Detailed project description, designs, and construction date information is necessary for U. S. Fish and Wildlife Service concurrence.
3. Employees and/or contractors should be instructed that under no circumstances (other than emergencies) are they permitted on a nesting island during the aforementioned time period and until after the young have fledged.
4. If, in the process of conducting work, an Interior Least Tern colony is discovered at another location in the vicinity, the above restrictions apply to that colony as well. The U. S. Fish and Wildlife Service should be contacted for consultation and to determine if further action would have any affect.
5. Further consultation with the U. S. Fish and Wildlife Service may be necessary and should be requested if any of these criteria can not be met.

Proceed to Step 7.

STEP 7

Does your project occur within Arkansas, Desha, Jefferson, Lincoln, Monroe, Phillips, Prairie, or Woodruff counties **AND** occur in one or more of the following locations?

1. The mostly contiguous forest primarily in the lower White River floodplain

encompassing the U. S. Fish and Wildlife Service's Cache River and White River National Wildlife Refuges, the Arkansas Game and Fish Commission's Dagmar and Wattensaw Wildlife Management Areas, and adjacent forested private lands. The Ivory-billed Woodpecker potential range generally follows the edge of the large, contiguous forest but also includes:

- a. Forested corridors containing potentially suitable habitat extending outward from the edge of the core contiguous forest until the width decreases to less than 0.25 mile for a distance of more than 0.25 mile, and
 - b. Forested corridors containing potentially suitable habitat along Bayou DeView and Bayou LaGrue extending upstream about ten miles from the forest core.
2. The batture lands of the Mississippi River extending from the vicinity of the mouth of the White River to about 8 – 10 miles south of the mouth of the Arkansas River in Desha County, AR.
 3. The forest encompassing the AGFC Black Swamp WMA and Cache River NWR, and adjacent forested private lands.
 4. The portions of the lower Arkansas River floodplain inside the levees in Desha, Lincoln, and Jefferson counties from the confluence of the Arkansas and Mississippi rivers to about 12 miles upstream of Dam 2.

Yes ☐ See instructions below.
No ☒ Proceed to Step 8.

If you check "Yes" to Step 7, a concurrence letter from the U. S. Fish and Wildlife Service should accompany your permit application package. Planning ahead is strongly advised in this situation. **The U. S. Fish and Wildlife Service may require surveys and more detailed consultation.** Any and all other endangered species issues will be evaluated when your information is submitted to the U.S. Fish and Wildlife Service.

STEP 8

Does your project occur within the area defined below in Franklin, Logan, Sebastian, or Scott counties and include three or more acres of ground disturbance?

Yes ☐ See instructions below.
No ☒ Proceed to Step 9.

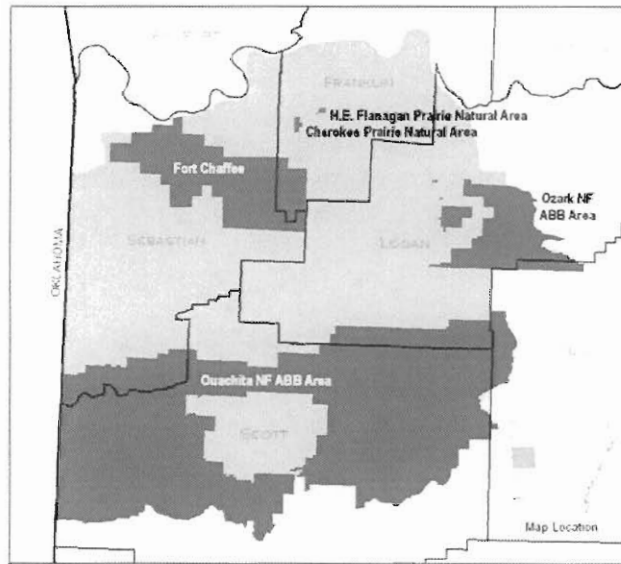
Projects resulting in a ground disturbance of three acres or more in areas shaded in light gray in the figure below or private in-holdings within publicly-owned properties (dark

gray shaded areas) and not meeting one of the habitat characteristics listed below must complete an American Burying Beetle survey, and possibly trap and relocation if presence is detected, prior to permit issuance. The northern boundary of this area extends east along Highway 45 from Enterprise near the AR/OK state line to Highway 255, continues east from Highway 255 to the Ft. Chaffee boundary and then north following Ft. Chaffee's boundary to the Arkansas River, from this point extending east the northern boundary is the Arkansas River in Sebastian, Franklin, and Logan counties until reaching Highway 309 at Roseville, from this point extending southeast the eastern boundary is Highway 309 until reaching the southern boundary of the Ozark National Forest, the remaining boundaries to the south and west of this point are represented by county, state, and National Forest ABB Area boundaries.

In general, but not limited to, any one of the following project characteristics exclude the need to conduct an American Burying Beetle survey:

1. Projects with less than three acres of soil disturbance.
2. Soil that is greater than 70 percent sand.
3. Soil that is greater than 70 percent clay.
4. Land where greater than 80 percent of the soil surface is comprised of rock.
5. Land where greater 80 percent of the subsurface soil structure within the top four inches is comprised of rock.
6. Land that has already been developed and no longer exhibits topsoil or leaf litter.
7. Land that is tilled on at least an annual basis.
8. Land that meets the U.S. Army Corps of Engineers definition of wetland.
9. Pine plantations planned for mechanical treatment where stocking density is 750 or more trees per acre (little sunlight to forest floor).
10. Shortleaf pine or mixed pine-hardwood forest stands with 110 square feet per acre or greater overstory basal area and more than 700 stems per acre occupying midstory and understory positions.
11. Land that is bordered by dense urban development (when in doubt request Service concurrence).
12. Land that is surrounded by intensive urbanization (contact the U. S. Fish and Wildlife Service at 501-513-4470 to verify this characteristic)

The Service evaluates numerous other project characteristics such as type, duration, permanency, land use, location, time/season, and habitat to determine if a survey is required. If you have questions regarding the need for a survey, please contact the U. S. Fish and Wildlife Service at 501-513-4470. **American Burying Beetle surveys can only be conducted between May 20 and September 20 and are valid for one year. Please plan ahead.** If you answered "Yes" to Step 9, a concurrence letter from the U. S. Fish and Wildlife Service should accompany your permit application package. Any and all other endangered species issues will be evaluated when your information is submitted to the U.S. Fish and Wildlife Service.



STEP 9

Does your project occur in Ashley, Bradley, Clay, Drew, Izard, Jackson, Lawrence, Washington, or Woodruff counties **AND** are one or more of the following federally listed plants present (Virginia Sneezeweed, Missouri Bladderpod, Pondberry, Running Buffalo Clover, and/or *Geocarpum minimum*).

- Yes ☐ See instructions below.
 Uncertain ☐ See instructions below.
 No ☒ Proceed to the Certification section.

1. Avoid use of pre-emergent herbicides in areas with federally listed species and state species of concern.
2. Avoid herbicide use at any known site inhabited by federally listed plants during the following time periods:
 - a. Virginia Sneezeweed (*Helenium virginicum*): Spring "green up" until first frost.
 - b. *Geocarpum minimum*: February through June.
 - c. Missouri Bladderpod (*Physaria (Lesquerella) filiformis*): July through September
 - d. Pondberry (*Lindera melissifolia*): Bud inhibitor agents could damage plants during December through February. Plants flower in early spring

before leaves are active, avoid herbicide applications from flowering through February.

- e. Running Buffalo Clover (*Trifolium stoloniferum*): August through February.
 - f. Harparella (*Ptilimnium nodosum*): May through October. Since this species occurs in stream channels and is typically underwater during this time, we assume it is dormant. It begins growing as stream waters recede in the spring and flowers and fruits in the summer when water in the stream channel is low.
- 3. Maintain native glade and sinkhole pond vegetation by minimizing or avoiding activities in this habitat type.
 - 4. Pondberry is a wetland plant that is often found in sand pond habitats in eastern Arkansas, low sandy ridges in hardwood bottoms in the St. Francis Sunken Lands, and in the Ouachita River bottoms. BMPs directed toward minimizing runoff and erosion or introduction of contaminants into these areas should be employed.

If you answered "Yes" or "Uncertain" to Step 9 AND can not implement the four recommendations listed above OR the project will have direct impacts on federally listed plants, contact the U. S. Fish and Wildlife Service for conservation recommendations prior to project implementation. Any and all other endangered species issues will be evaluated when your information is submitted to the U.S. Fish and Wildlife Service.

STEP 10

There are currently no federally listed threatened or endangered species present in the area of your project.

CERTIFICATION

If you are able to implement the recommendations in this checklist, disturbance of federally listed endangered and threatened species is unlikely. If you can not adopt these recommendations, we suggest that you contact the U. S. Fish and Wildlife Service's Arkansas Field Office for further assistance in determining whether your activity may disturb federally listed species.

BC (initial) "I certify that, to the best of my knowledge and belief, all of the information on and attached to this evaluation form is correct, complete, and made in good faith."

BC (initial) "I understand that false or fraudulent information on or attached to this evaluation form may subject me to criminal or civil prosecution should the provisions of the Endangered Species Act or Bald and Golden Eagle Protection Act be violated."

BC (initial) "I understand that any information given may be verified."

"I certify under penalty of law that this document and all attachments were prepared under my direction or supervision in accordance with a system designed to assure that qualified personnel properly gather and evaluate the information submitted. Based on my inquiry of the person or persons who manage the system, or those persons directly responsible for gathering the information submitted is, to the best of my knowledge and belief, true, accurate, and complete. I am aware that there are significant penalties for submitting false information, including the possibility of fine and imprisonment for knowing violations."

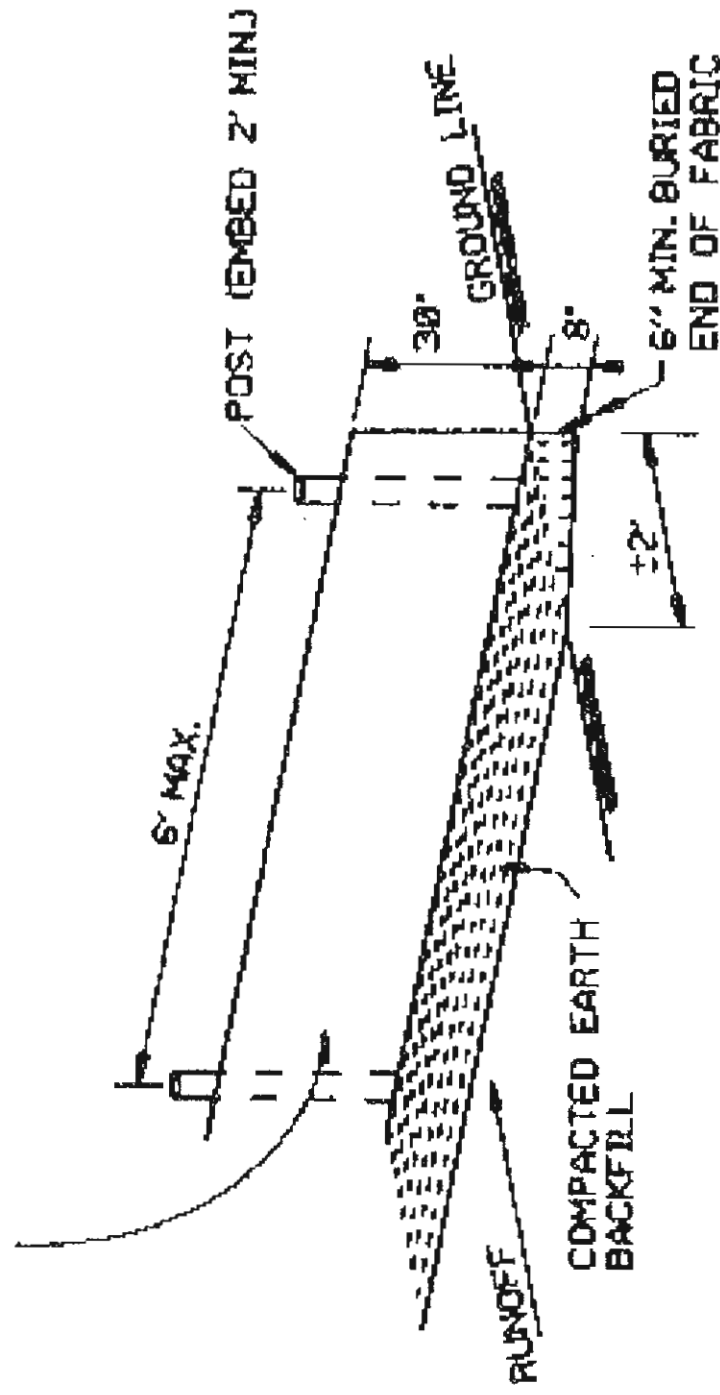
Bob Cornish Supt.
Print Name and Title

Bob Cornish
Signature

3-30-2010
Date

We recommend printing this evaluation, signing and dating it, submitting copies to the U.S. Fish and Wildlife Service (address listed on page 1) and the Arkansas Department of Environmental Quality, and keeping a copy for your records.

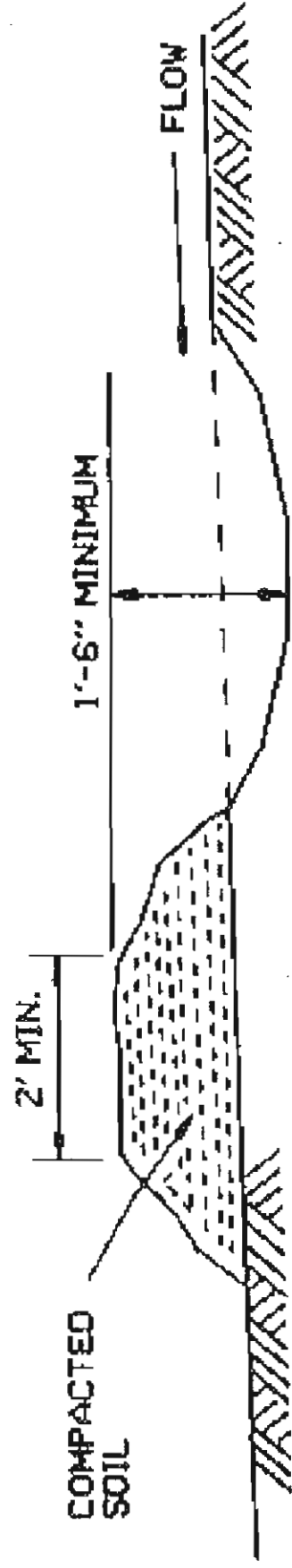
GEOTEXTILE FABRIC



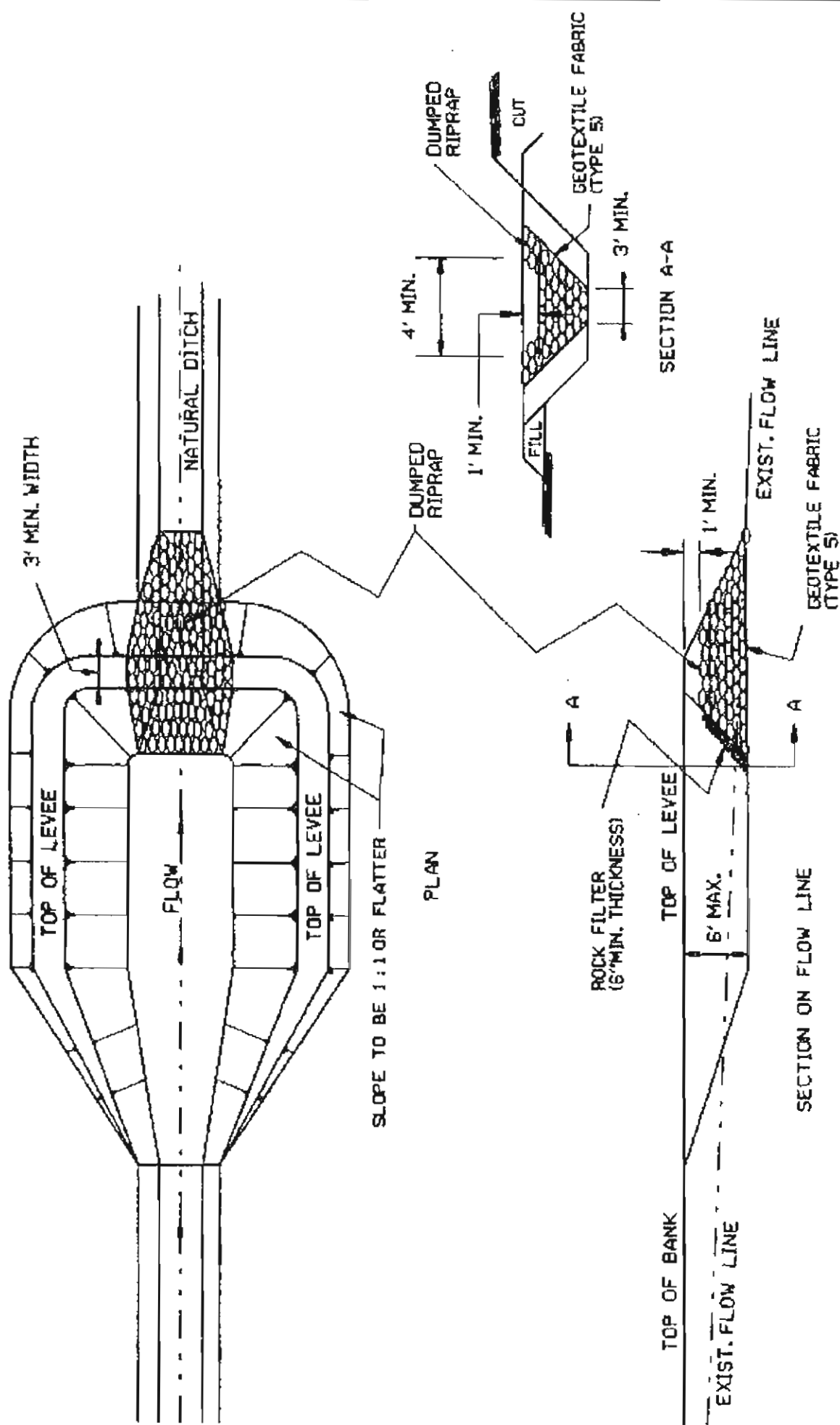
SILT FENCE (E-11)

GENERAL NOTES

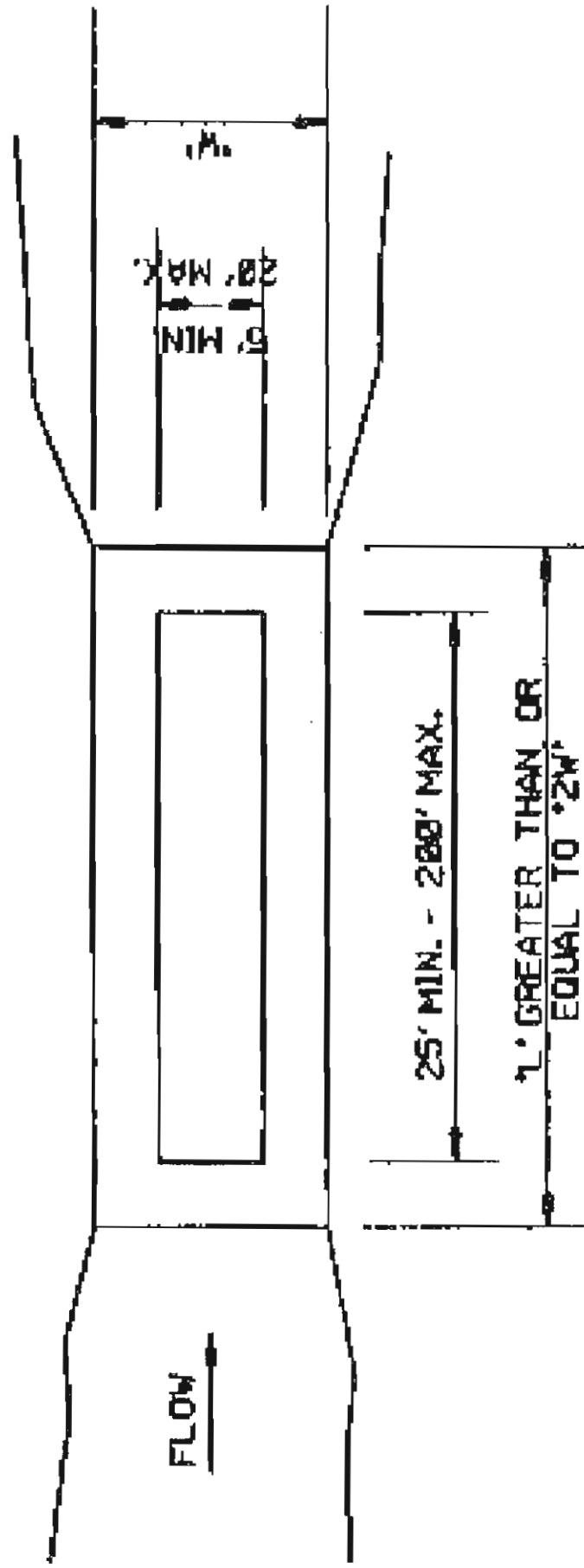
GEOTEXTILE FABRIC SHALL BE SPLICED TOGETHER WITH A SEWN SEAM ONLY AT A SUPPORT POST. OR TWO SECTIONS OF FENCE MAY BE OVERLAPPED INSTEAD.



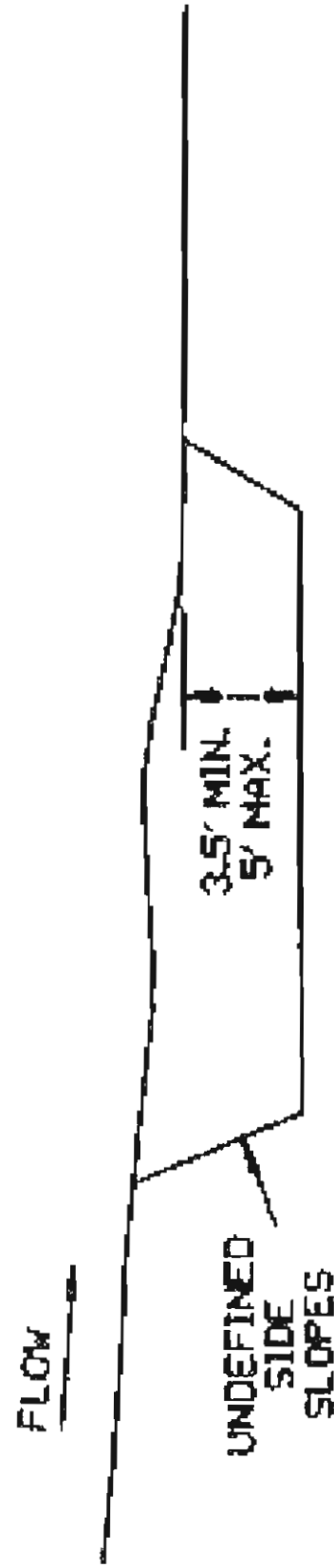
DIVERSION DITCH (E-8)



SEDIMENT BASIN WITH RIPRAP OUTLET (E-9)

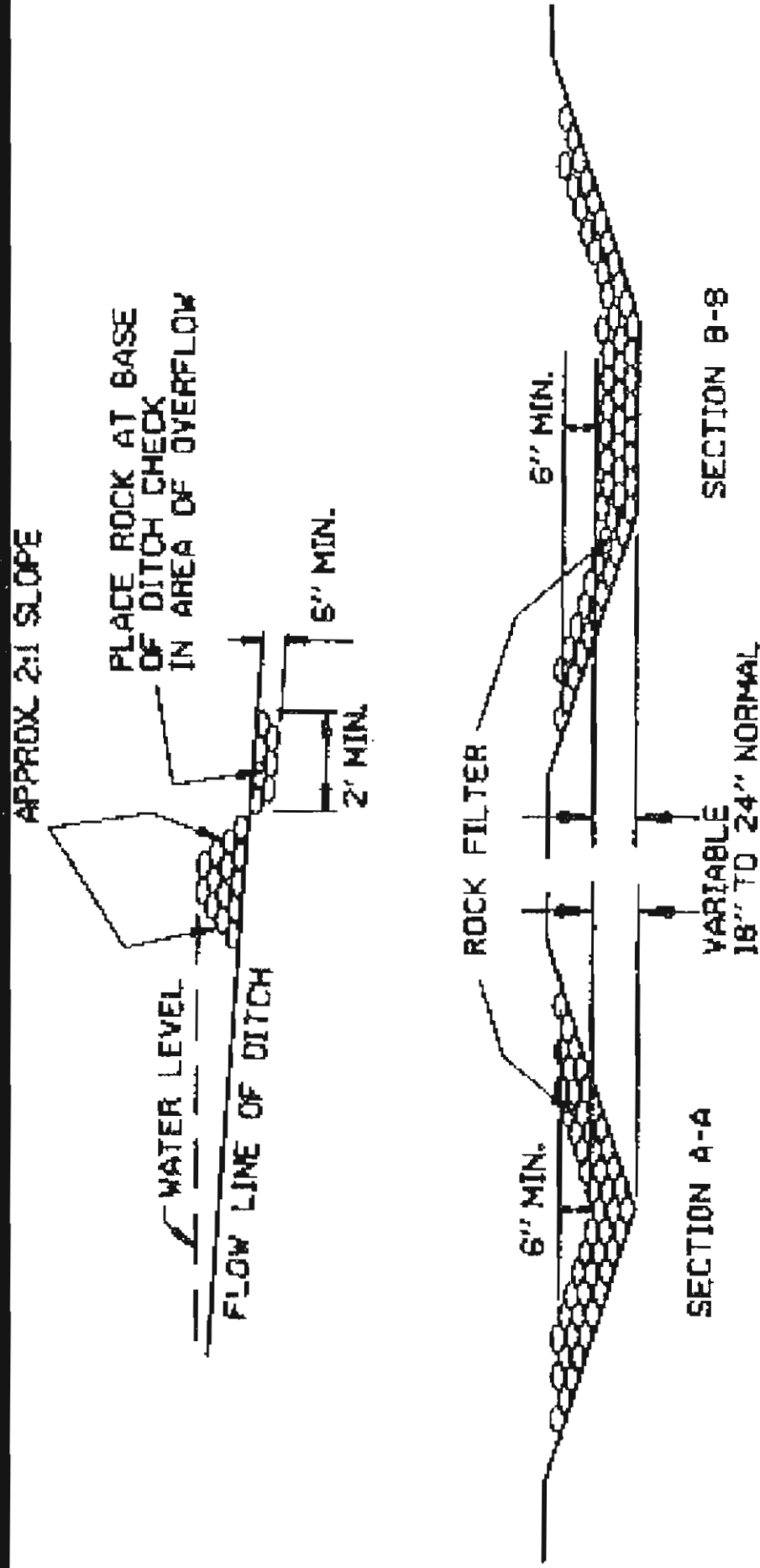


PLAN VIEW



PROFILE

SEDIMENT BASIN (E-14)



ROCK DITCH CHECK (E-6)