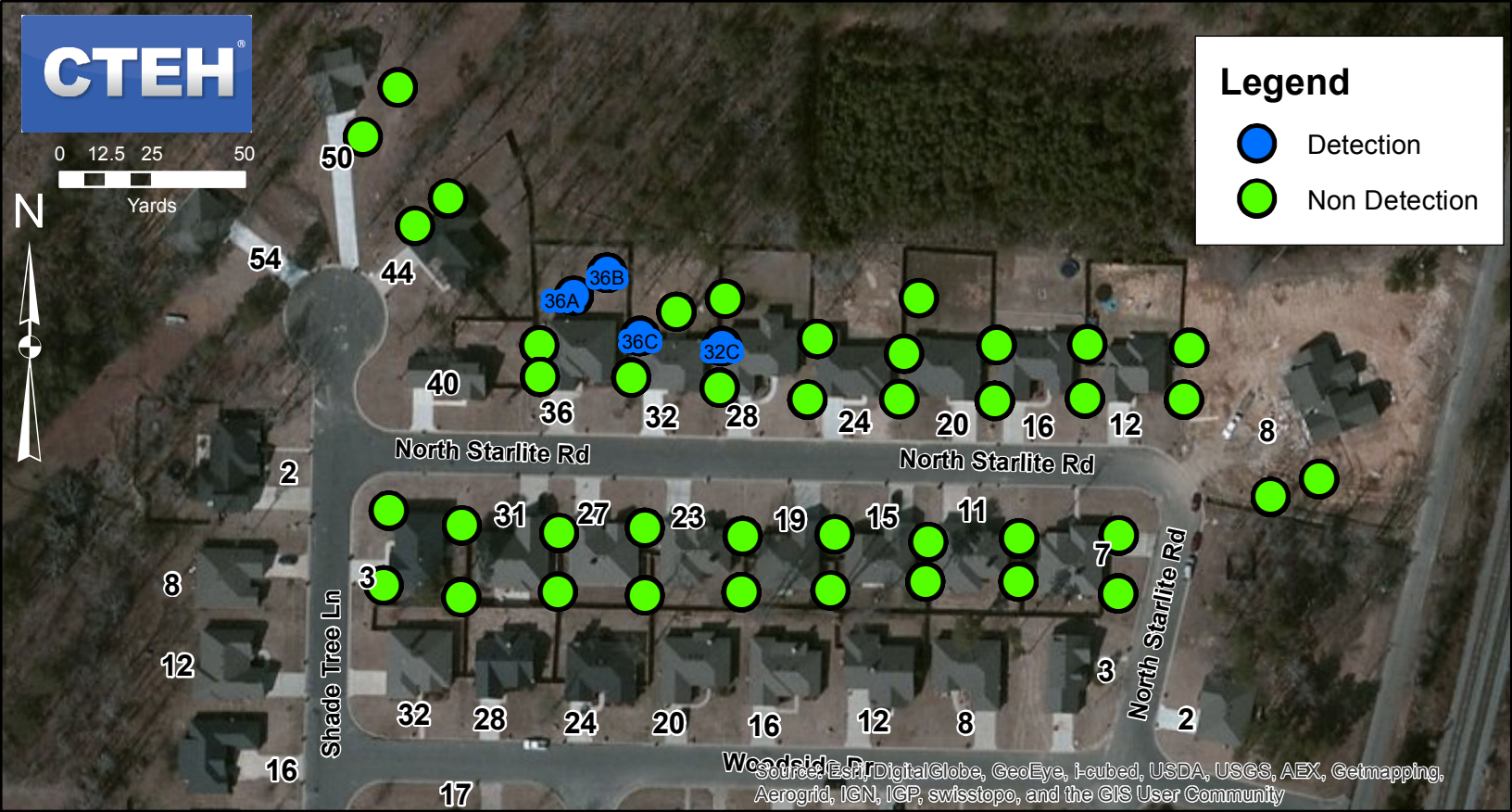


**Legend**

- Detection
- Non Detection



Source: Esri, DigitalGlobe, GeoEye, i-cubed, USDA, USGS, AEX, Getmapping, Aerogrid, IGN, IGP, swisstopo, and the GIS User Community

Date	Time	Location	Reading	Analyte	Description	Comments
04/04/2013	22:57	32C	0.4 ppm	VOC	East side of 32 Starlite Rd	Crude oil odor; Visible Oil; boom present; Area evacuated; Residence; No work activity; Workers not present; Slight Odor;
04/04/2013	23:06	36B	0.6 ppm	VOC	North side of 36 Starlite Rd	Crude oil odor; Visible Oil; boom present; Area evacuated; Residence; Workers present; Slight Odor;
04/04/2013	23:30	36C	0.3 ppm	VOC	East side of 36 Starlite Rd	Crude oil odor; Visible Oil; Area evacuated; Residence; No work activity; Workers not present; Slight Odor;
04/04/2013	23:32	36C	0.05 ppm	Benzene	East side of 36 Starlite Rd	Crude oil odor; Visible Oil; boom present; Area evacuated; Residence; No work activity; Workers not present; Slight Odor;
04/04/2013	23:12	36B	0.05 ppm	Benzene	North side of 36 Starlite Rd	Crude oil odor; Visible Oil; boom present; Area evacuated; Residence; Workers present; Slight Odor;
04/04/2013	23:31	36A	0.05 ppm	Benzene	North side of 36 Starlite Rd	Crude oil odor; Visible Oil; Area evacuated; Residence; Workers not present; Slight Odor;
04/05/2013	00:07	36B	0.2 ppm	VOC	North side of 36 Starlite Rd	Crude oil odor; Visible Oil;
04/05/2013	00:11	36B	0.05 ppm	Benzene	North side of 36 Starlite Rd	Crude oil odor; Visible Oil;