



40435 – Conway, AR
ExxonMobil
Summary of Air Monitoring
Conducted by CTEH

March 29, 2013 1700 – March 29, 2013 2359

Note: The information provided below has not been processed by the QAQC department.

Table 1
Community Summary of Manual Real-Time Air Monitoring

Analyte	Count of Readings	Count of Detections	Average Concentration of Detections	Highest Concentration
Benzene	11	0	NA	< 0.1 ppm
LEL	25	0	NA	< 1.0%
VOC	40	10	6.9 ppm	28.6 ppm

Table 2
Work Area Summary of Manual Real-Time Air Monitoring

Analyte	Count of Readings	Count of Detections	Average Concentration of Detections	Highest Concentration
Benzene	15	10	0.6 ppm	2.2 ppm
Hydrogen Sulfide	11	1	21.0 ppm	21.0 ppm
LEL	13	2	4.0 %	6.0 %
Sulfur Dioxide	11	1	5.4 ppm	5.4 ppm
VOC	28	24	20.4 ppm	108.0 ppm

Table 3
Summary of AreaRAE Real-Time Air Monitoring

Unit	Analyte	Count of Readings	Count of Detections	Average Concentration of Detections	Highest Concentration
RTU_1 Stationary	Hydrogen Sulfide	1108	0	N/A	< 1.0 ppm
	LEL	1108	0	N/A	< 1.0 %
	Sulfur Dioxide	1108	31	0.1 ppm	0.1 ppm
	VOC	1108	377	3.4 ppm	34.0 ppm
RTU_6 Mobile	Hydrogen Sulfide	102	18	0.1 ppm	0.1 ppm
	LEL	102	0	N/A	< 1.0%
	Sulfur Dioxide	102	0	N/A	< 0.1 ppm
	VOC	102	65	3.3	34.4 ppm

Figure 1
Handheld Air Monitoring

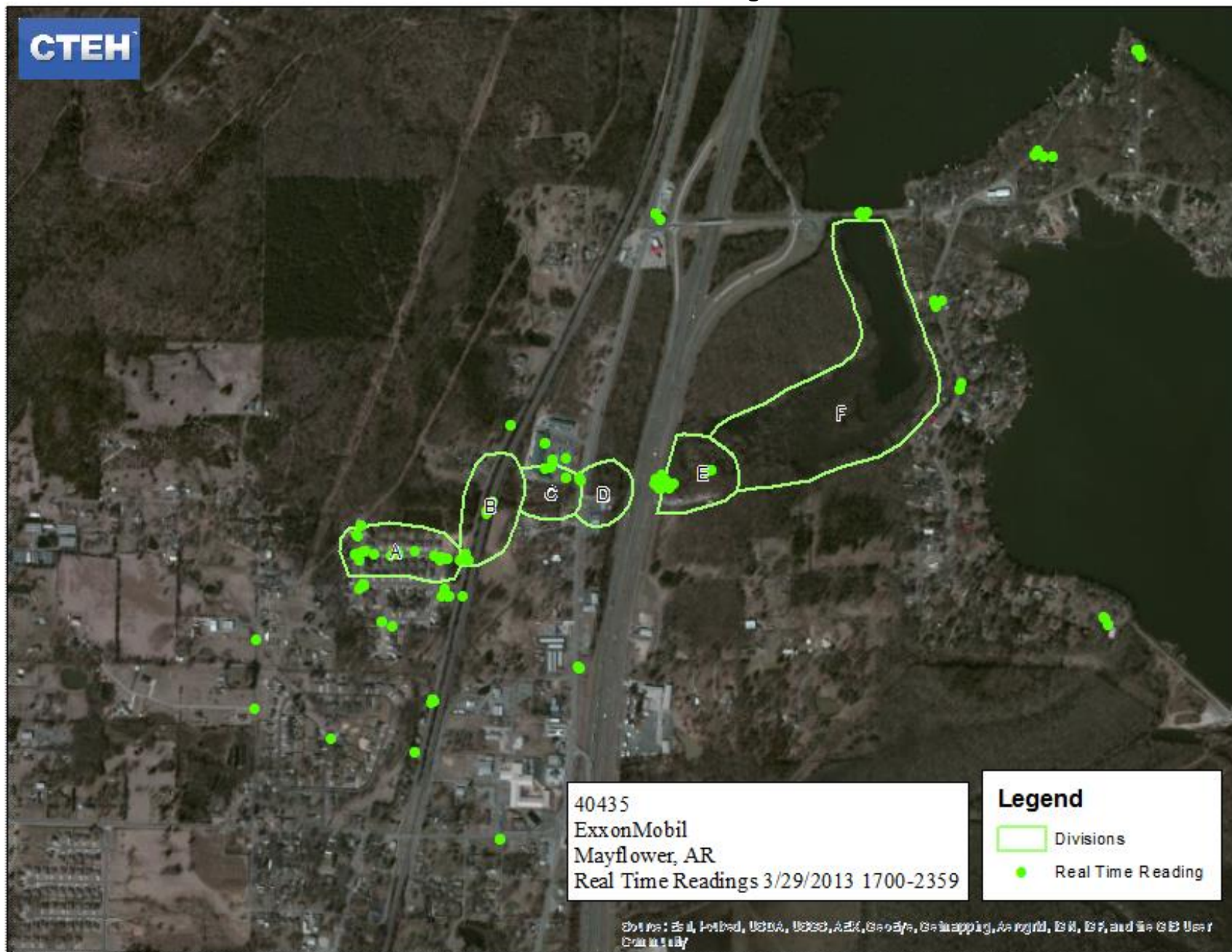
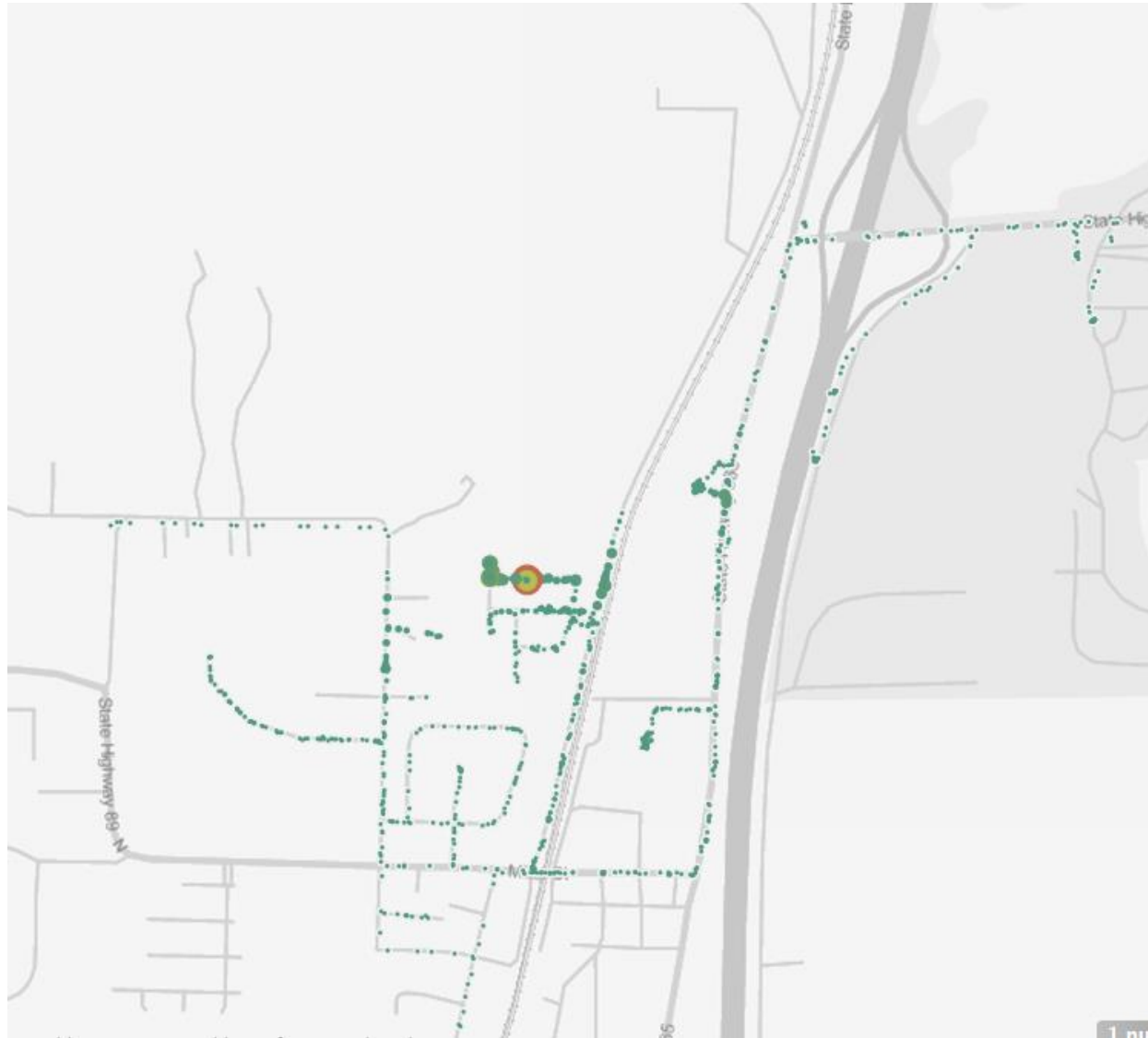


Figure 2
Mobile AreaRAE
VOC concentrations



Legend

- Collection Point
- Boom
- ⎓ Underflow Dam
- Berm
- ➔ Product Flow
- Divisions

