



40435 – Mayflower Pipeline Incident
ExxonMobil
Summary of Air Monitoring
Conducted by CTEH
April 02, 2013 - 24 hour period

Note: The information provided below has not been processed by the QAQC department.

Table 1
Community Summary of Manual Real-Time Air Monitoring

Analyte	Count of Readings	Count of Detections	Average Concentration of Detections	Highest Concentration
Benzene	20	0	N/A	< 0.05 ppm
Ethyl Benzene	3	0	N/A	< 1 ppm
Hydrogen Sulfide	56	0	N/A	< 1 ppm
LEL	11	0	N/A	< 1 %
VOC	146	1	0.2 ppm	0.2 ppm
Xylene	1	0	N/A	< 1 ppm

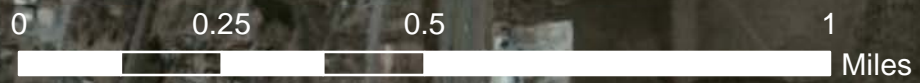
Table 2
Work Area Summary of Manual Real-Time Air Monitoring

Analyte	Count of Readings	Count of Detections	Average Concentration of Detections	Highest Concentration
Benzene	66	3	0.2	0.3 ppm
Hydrogen Sulfide	141	0	N/A	< 1 ppm
Hexane	4	0	N/A	< 1 ppm
LEL	136	0	N/A	< 1 %
Toluene	4	0	N/A	< 1 ppm
VOC	177	35	1.9 ppm	14.9 ppm*
Xylene	4	0	N/A	< 1 ppm

Table 3
Summary of AreaRAE Real-Time Air Monitoring

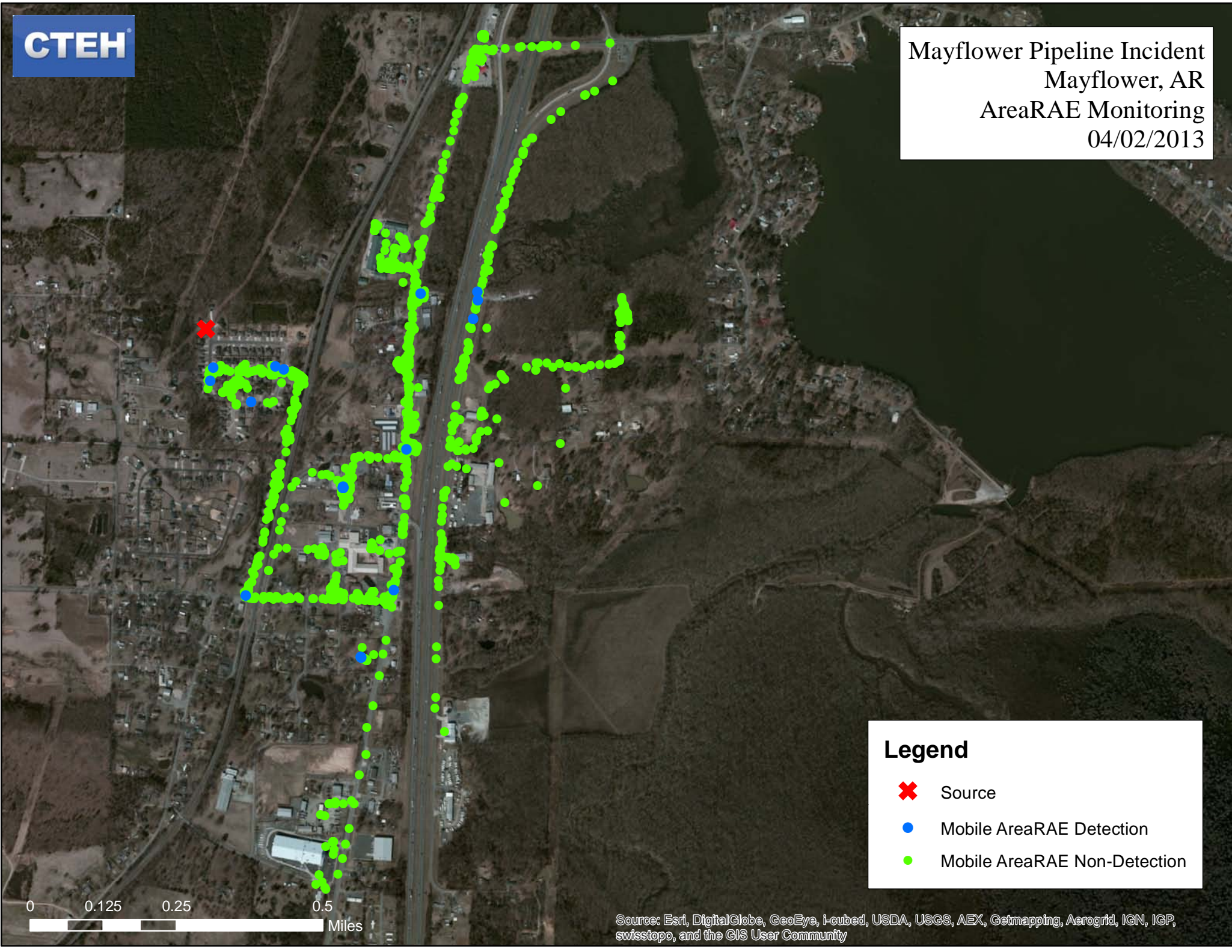
Unit	Analyte	Count of Readings	Count of Detections	Average Concentration of Detections	Highest Concentration
RTU_1 mobile	Hydrogen Sulfide	3561	0	N/A	< 0.1 ppm
	LEL	3561	0	N/A	< 1 %
	VOC	3561	22	0.1 ppm	0.5 ppm
RTU_5 fixed	Hydrogen Sulfide	3984	0	N/A	< 0.1 ppm
	LEL	3984	0	N/A	< 1 %
	VOC	3984	0	N/A	< 0.1 ppm
RTU_6 fixed	Hydrogen Sulfide	4909	0	N/A	< 0.1 ppm
	LEL	4909	0	N/A	< 1 %
	VOC	4909	159	0.1 ppm	0.5 ppm

*Details of elevated chemical detections are provided at the end of this document






Legend

- ✖ Source
- Benzene Detection
- Detection
- Non-Detection



Legend

-  Source
-  Mobile AreaRAE Detection
-  Mobile AreaRAE Non-Detection

0 0.125 0.25 0.5 Miles

14.9 ppm VOC detected at 16:24 on 04/02/2013 in work area

Field Data

Project number: 40435
Reading date: 2013/04/02 16:24
Latitude: 34.965024
Longitude: -92.423323
Distance From Site: 0.03
Location description: 44 shade tree ln
Indoor/Outdoor: Outdoor
Instrument: MultiRAE
Instrument barcode: 12415
Matrix: Air
Analyte: VOC
Concentration: 14.9
Units: ppm
Comments: Exhaust fumes odor; Exhaust fumes present; Crude oil odor; Visible Oil; Area evacuated; Residence; Workers present;
Initials: Anthony Williams
Additional comments: excavation is ongoing.
Detection limit: 0.1
Gps method: Automatic
Guid: 5D92177C-E3C8-44B2-90E3-0461D9ACE49B
Created: 2013/04/02 16:24



10.9 ppm VOC detected at 15:22 on 04/02/2013 in work area

Field Data

Project number: 40435
Reading date: 2013/04/02 15:22
Latitude: 34.965115
Longitude: -92.417223
Distance From Site: 0.31
Location description: Bayou South Bank Clean-up
Indoor/Outdoor: Outdoor
Instrument: MultiRAE
Instrument barcode: 12239
Matrix: Air
Analyte: VOC
Concentration: 10.9
Units: ppm
Comments: Vac Trucks Present; Crude oil odor; Visible Oil; Workers present; Moderate Odor;
Initials: Tommy Arnold
Additional Reading was in contaminated water where workers are raking weeds and grass and using shovels to move product to suction pipe. vac truck +/- 600 ft away.
LEAD was contacted. No Benzene, H2S, or LEL detected.
Detection limit: 0.1
Gps method: Automatic

