



40435 – Mayflower Pipeline Incident
ExxonMobil
Summary of Air Monitoring
Conducted by CTEH
April 03, 2013 - 24 hour period

Note: The information provided below has not been processed by the QAQC department.

Table 1
Community Summary of Manual Real-Time Air Monitoring

Analyte	Count of Readings	Count of Detections	Average Concentration of Detections	Highest Concentration
Benzene	8	0	N/A	< 0.05 ppm
Hydrogen Sulfide	83	0	N/A	< 1 ppm
VOC	160	0	N/A	< 0.1 ppm

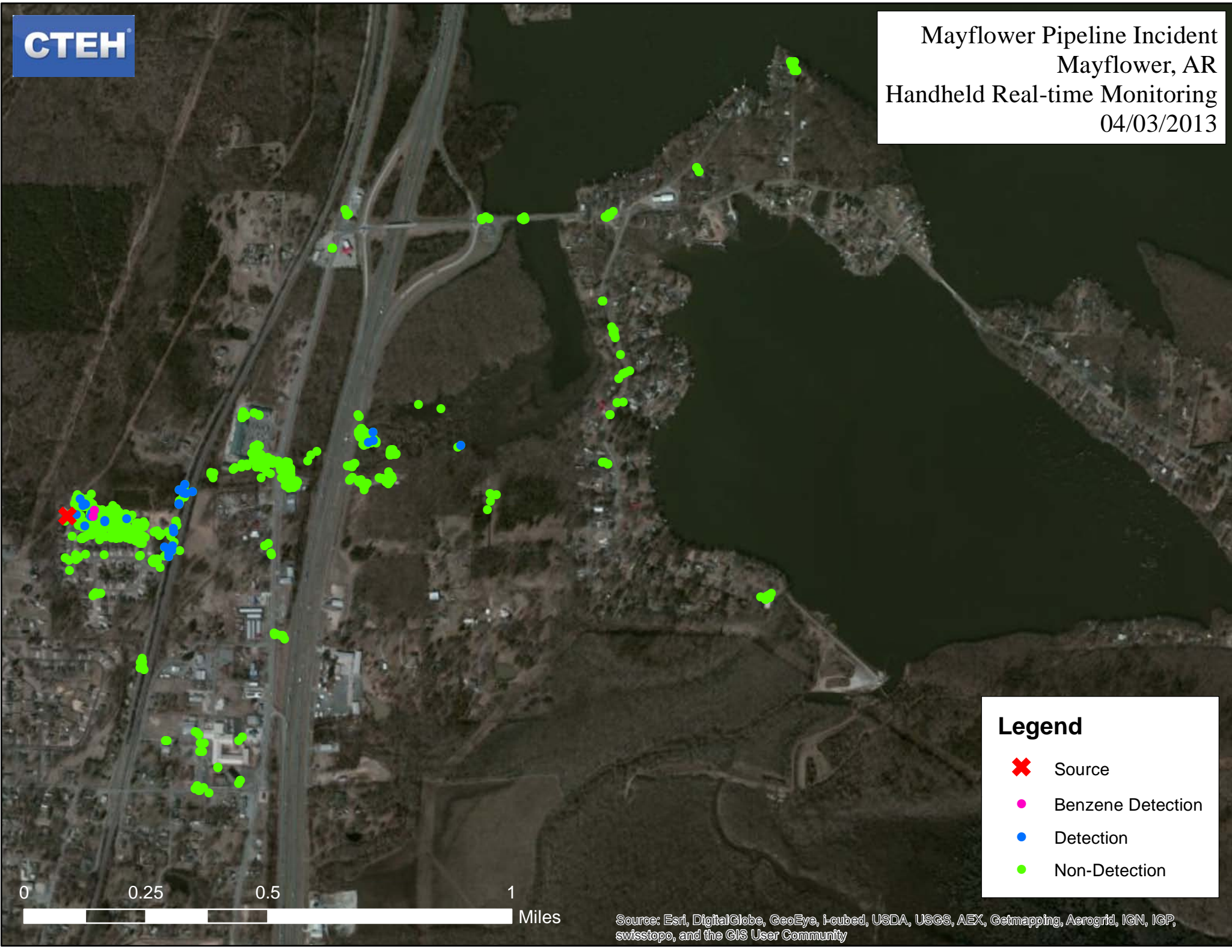
Table 2
Work Area Summary of Manual Real-Time Air Monitoring

Analyte	Count of Readings	Count of Detections	Average Concentration of Detections	Highest Concentration
Benzene	75	2	0.05	0.05 ppm
Hydrogen Sulfide	162	0	N/A	< 1 ppm
Hexane	2	0	N/A	< 1 ppm
LEL	134	0	N/A	< 1 %
Toluene	2	0	N/A	< 1 ppm
VOC	233	21	0.57	6.1 ppm
Xylene	2	0	N/A	< 1 ppm

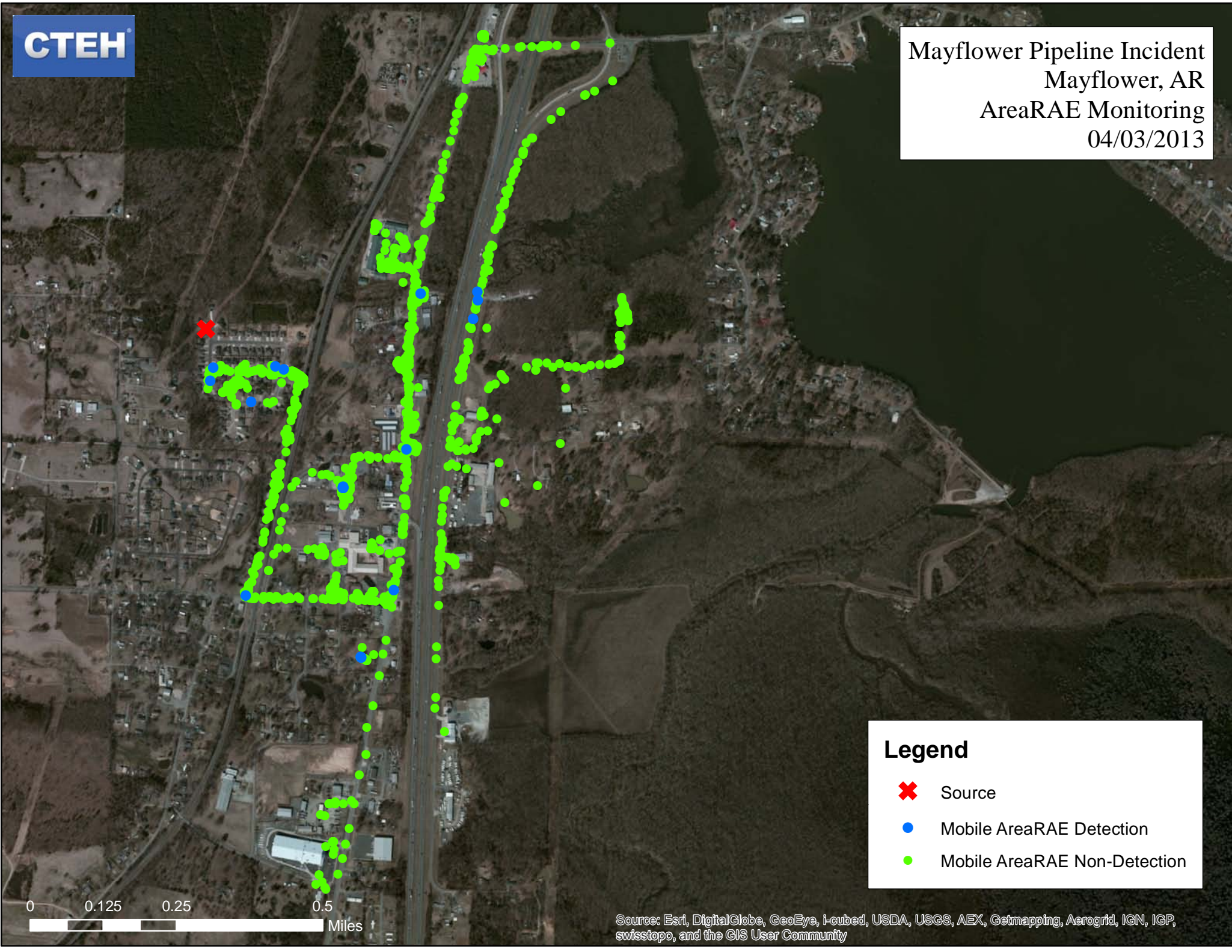
Table 3
Summary of AreaRAE Real-Time Air Monitoring

Unit	Analyte	Count of Readings	Count of Detections	Average Concentration of Detections	Highest Concentration
RTU_1 mobile	Hydrogen Sulfide	3408	0	N/A	< 0.1 ppm
	LEL	3408	0	N/A	< 1 %
	VOC	3408	28	0.5 ppm	1.7 ppm
RTU_5 fixed	Hydrogen Sulfide	5256	2	0.3 ppm	0.4 ppm
	LEL	5256	0	N/A	< 1 %
	VOC	5256	5	0.2 ppm	0.3 ppm
RTU_6 fixed	Hydrogen Sulfide	5428	0	N/A	< 0.1 ppm
	LEL	5428	0	N/A	< 1 %
	VOC	5428	25	0.2 ppm	0.5 ppm




*Details of elevated chemical detections are provided at the end of this document



0 0.25 0.5 1 Miles



Legend

-  Source
-  Mobile AreaRAE Detection
-  Mobile AreaRAE Non-Detection

0 0.125 0.25 0.5 Miles

Source: Esri, DigitalGlobe, GeoEye, i-cubed, USDA, USGS, AEX, Getmapping, Aerogrid, IGN, IGP, swisstopo, and the GIS User Community