

**40435 – Mayflower Pipeline Incident
ExxonMobil
Summary of Air Monitoring
Conducted by CTEH
April 06, 2013 - 24 hour period**

Note: The information provided below has not been processed by the QAQC department.

**Table 1
Community Summary of Manual Real-Time Air Monitoring**

Analyte	Count of Readings	Count of Detections	Average Concentration of Detections	Highest Concentration
Benzene	92	0	N/A	< 0.05 ppm
Hydrogen Sulfide	188	0	N/A	< 1 ppm
SO ₂	1	0	N/A	< 0.01 ppm
Toluene	1	0	N/A	< 1 ppm
VOC	248	2	0.1 ppm	2.4 ppm
Xylene	2	0	N/A	< 1 ppm

**Table 2
Work Area Summary of Manual Real-Time Air Monitoring**

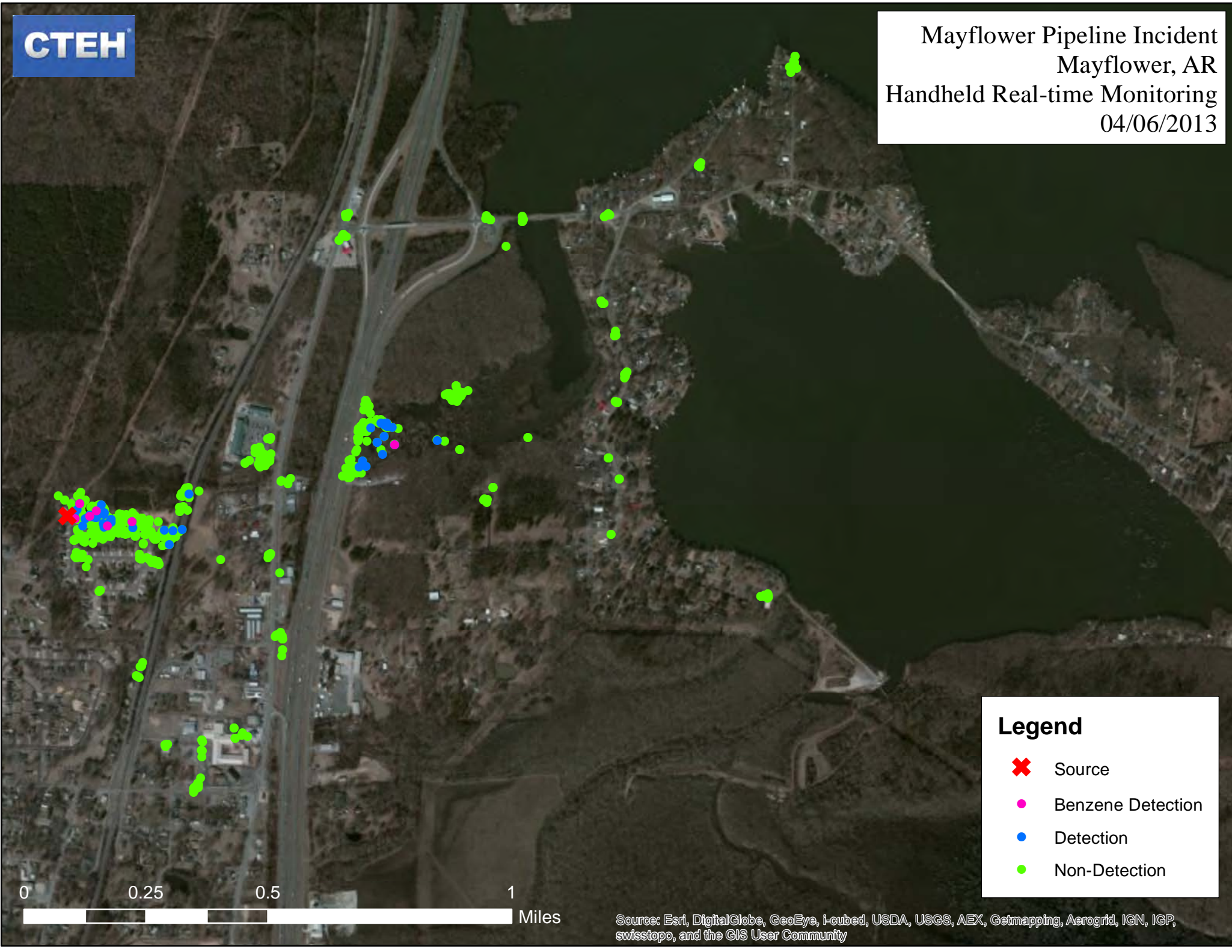
Analyte	Count of Readings	Count of Detections	Average Concentration of Detections	Highest Concentration
Benzene	85	7	0.05 ppm	0.1 ppm
Hydrogen Sulfide	142	0	N/A	< 1 ppm
LEL	111	0	N/A	< 1 %
VOC	179	42	0.9 ppm	8.9 ppm

**Table 3
Summary of AreaRAE Real-Time Air Monitoring**

Unit	Analyte	Count of Readings	Count of Detections	Average Concentration of Detections	Highest Concentration
RTU_1 mobile	Hydrogen Sulfide	3916	62 [†]	0.1 ppm	0.2 ppm
	LEL	3916	0	N/A	< 1 %
	VOC	3916	20	0.2 ppm	1.6 ppm
RTU_5 fixed	Hydrogen Sulfide	5296	0	N/A	< 0.1 ppm
	LEL	5296	0	N/A	< 1 %
	VOC	5296	6	0.2 ppm	0.6 ppm
RTU_6 fixed	Hydrogen Sulfide	5653	525 [†]	0.1 ppm	0.4 ppm
	LEL	5653	0	N/A	< 1 %
	VOC	5653	863	0.2 ppm	0.9 ppm

*Details of elevated chemical detections are provided at the end of this document. None to report on this date.

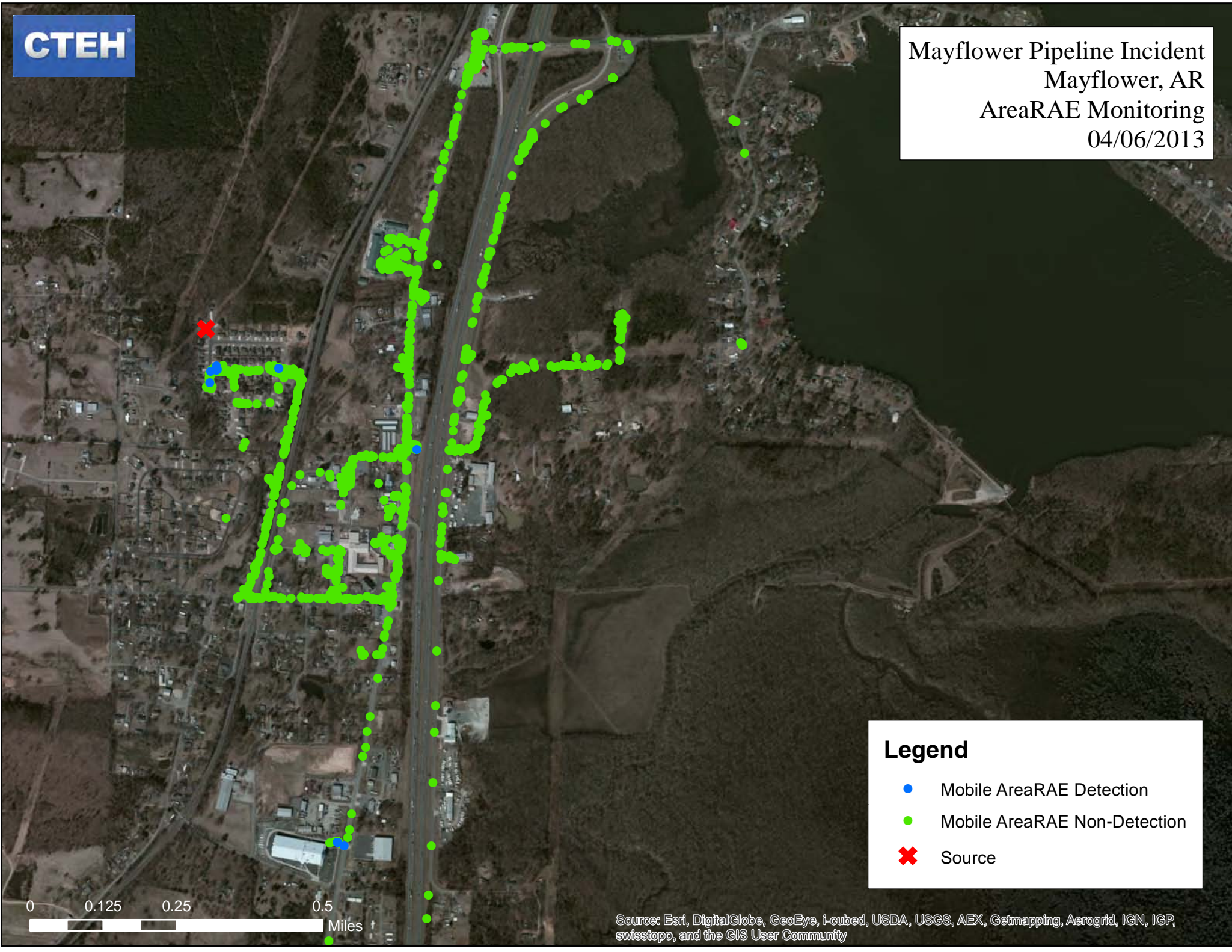
†Raw data indicate sensor activity that is below instrument resolution (1 ppm) for Hydrogen Sulfide.



Legend

- ✖ Source
- Benzene Detection
- Detection
- Non-Detection

0 0.25 0.5 1 Miles



Legend

- Mobile AreaRAE Detection
- Mobile AreaRAE Non-Detection
- ✕ Source

0 0.125 0.25 0.5 Miles

Source: Esri, DigitalGlobe, GeoEye, i-cubed, USDA, USGS, AEX, Getmapping, Aerogrid, IGN, IGP, swisstopo, and the GIS User Community