

**40435 – Mayflower Pipeline Incident
ExxonMobil
Summary of Air Monitoring
Conducted by CTEH
April 08, 2013 - 24 hour period**

Note: The information provided below has not been processed by the QAQC department.

**Table 1
Community Summary of Manual Real-Time Air Monitoring**

Analyte	Count of Readings	Count of Detections	Average Concentration of Detections	Highest Concentration
Benzene	12	1	0.05 ppm	0.05 ppm
Hydrogen Sulfide	77	0	N/A	< 1 ppm
VOC	117	0	N/A	< 0.1 ppm

**Table 2
Work Area Summary of Manual Real-Time Air Monitoring**

Analyte	Count of Readings	Count of Detections	Average Concentration of Detections	Highest Concentration
Benzene	186	1	0.05 ppm	0.05 ppm
Hydrogen Sulfide	203	0	N/A	< 1 ppm
LEL	69	0	N/A	< 1 %
Methyl Mercaptans**	1	0	N/A	< 0.05 ppm
Total Mercaptans**	1	0	N/A	< 0.1 ppm
VOC	241	13	0.2 ppm	0.5 ppm

**Real-time air monitoring was conducted for methyl and total mercaptans to assess the presence of natural gas as odor was detected in the work area.

**Table 3
Summary of AreaRAE Real-Time Air Monitoring**

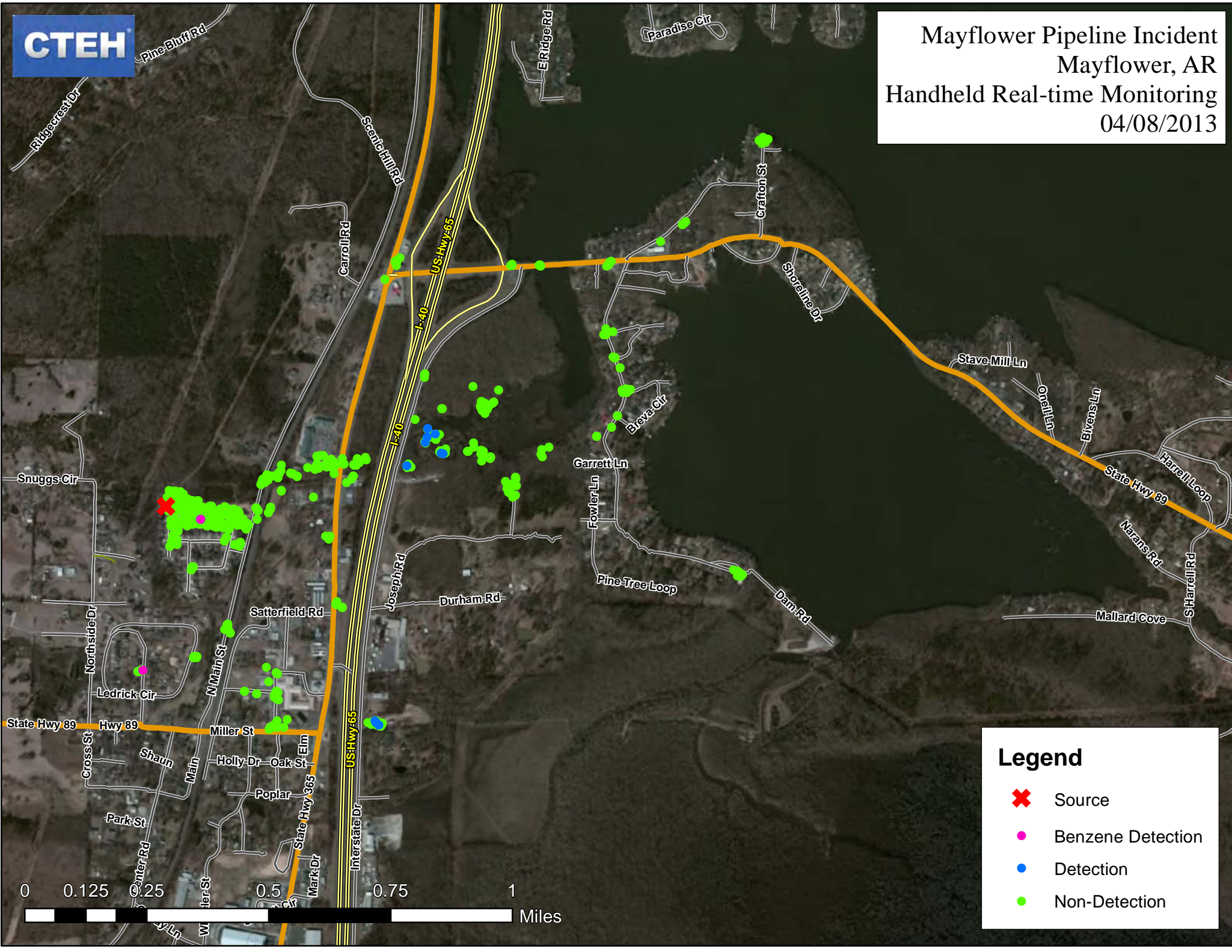
Unit	Analyte	Count of Readings	Count of Detections	Average Concentration of Detections	Highest Concentration
RTU_1 mobile	Hydrogen Sulfide	4564	0	N/A	< 1 ppm
	LEL	4564	0	N/A	< 1 %
	VOC	4564	11	0.2 ppm	0.4 ppm
RTU_2 fixed	Hydrogen Sulfide	2931	5 [†]	0.1 ppm	0.1 ppm
	VOC	2931	26	0.1 ppm	0.2 ppm
RTU_5 fixed	Hydrogen Sulfide	5478	4 [†]	0.1 ppm	0.1 ppm
	LEL	5478	0	N/A	< 1 %
	VOC	5478	5	0.4 ppm	1.3 ppm
RTU_6 fixed	Hydrogen Sulfide	5506	0	N/A	< 1 ppm
	LEL	5506	0	N/A	< 1 %
	VOC	5506	29	0.9 ppm	4.8 ppm

*Details of elevated chemical detections are provided at the end of this document. None to report on this date.

†Raw data indicate sensor activity that is below instrument resolution (1 ppm) for Hydrogen Sulfide.



Mayflower Pipeline Incident
Mayflower, AR
Handheld Real-time Monitoring
04/08/2013

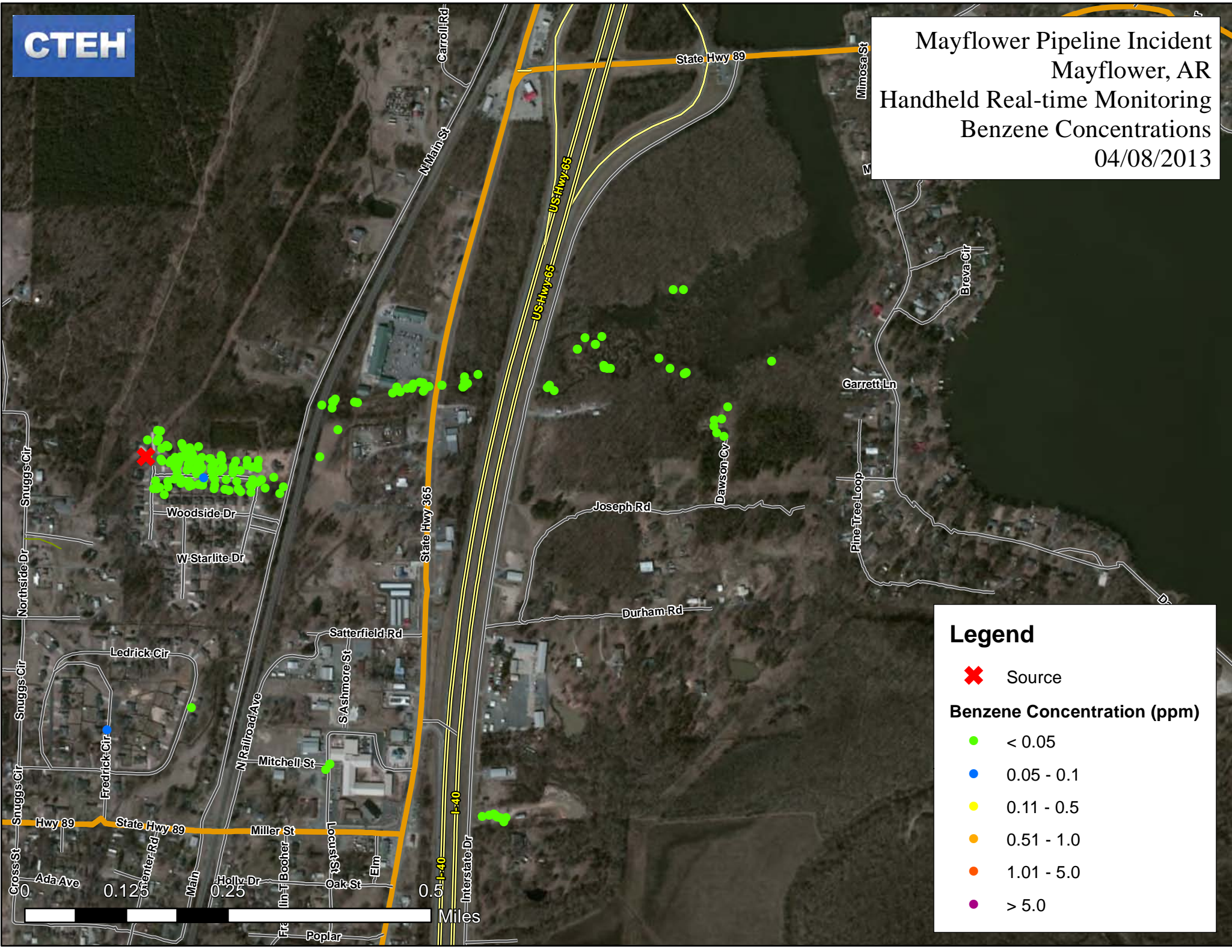


Legend

- ✖ Source
- Benzene Detection
- Detection
- Non-Detection



Mayflower Pipeline Incident
Mayflower, AR
Handheld Real-time Monitoring
Benzene Concentrations
04/08/2013



Legend

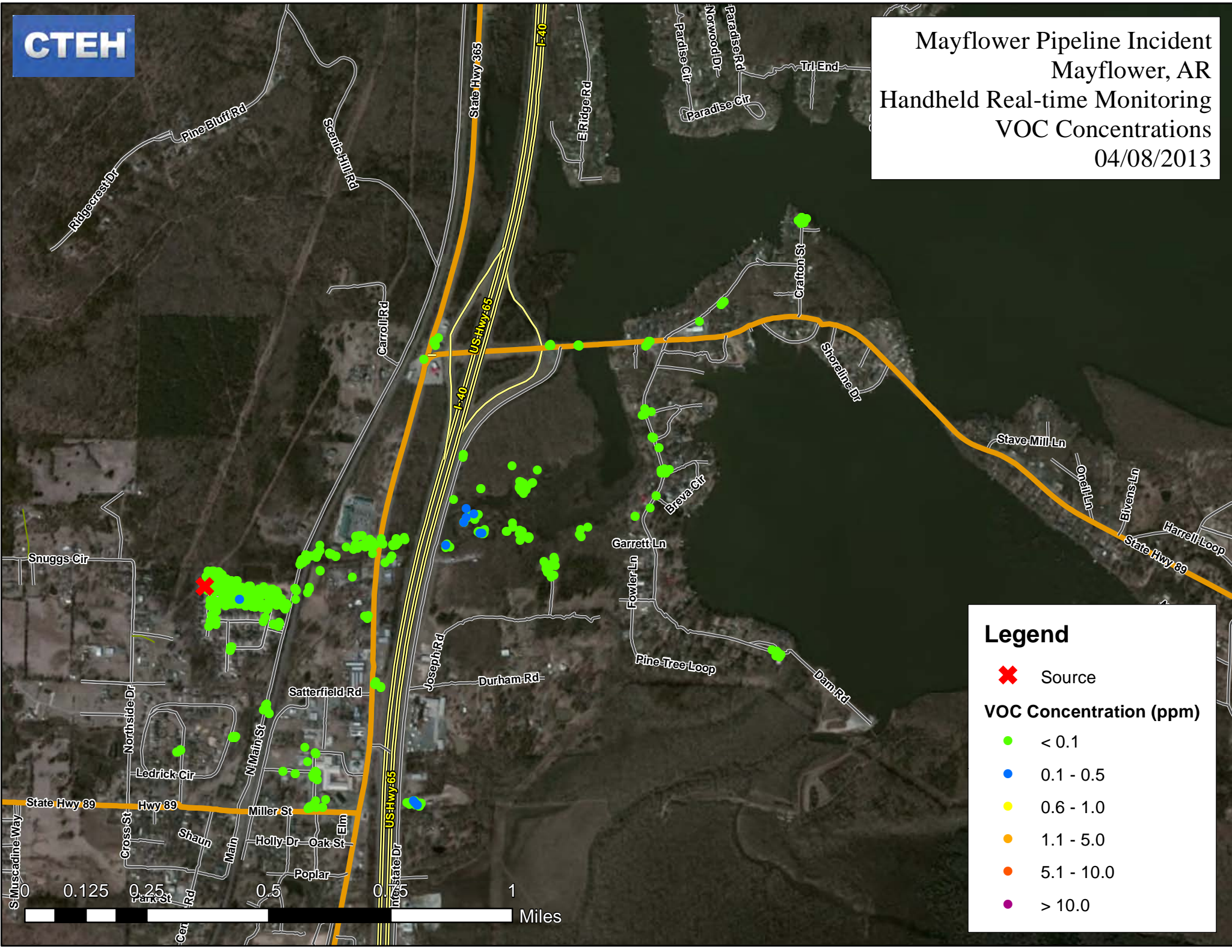
✖ Source

Benzene Concentration (ppm)

- < 0.05
- 0.05 - 0.1
- 0.11 - 0.5
- 0.51 - 1.0
- 1.01 - 5.0
- > 5.0



Mayflower Pipeline Incident
Mayflower, AR
Handheld Real-time Monitoring
VOC Concentrations
04/08/2013

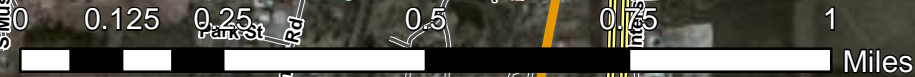


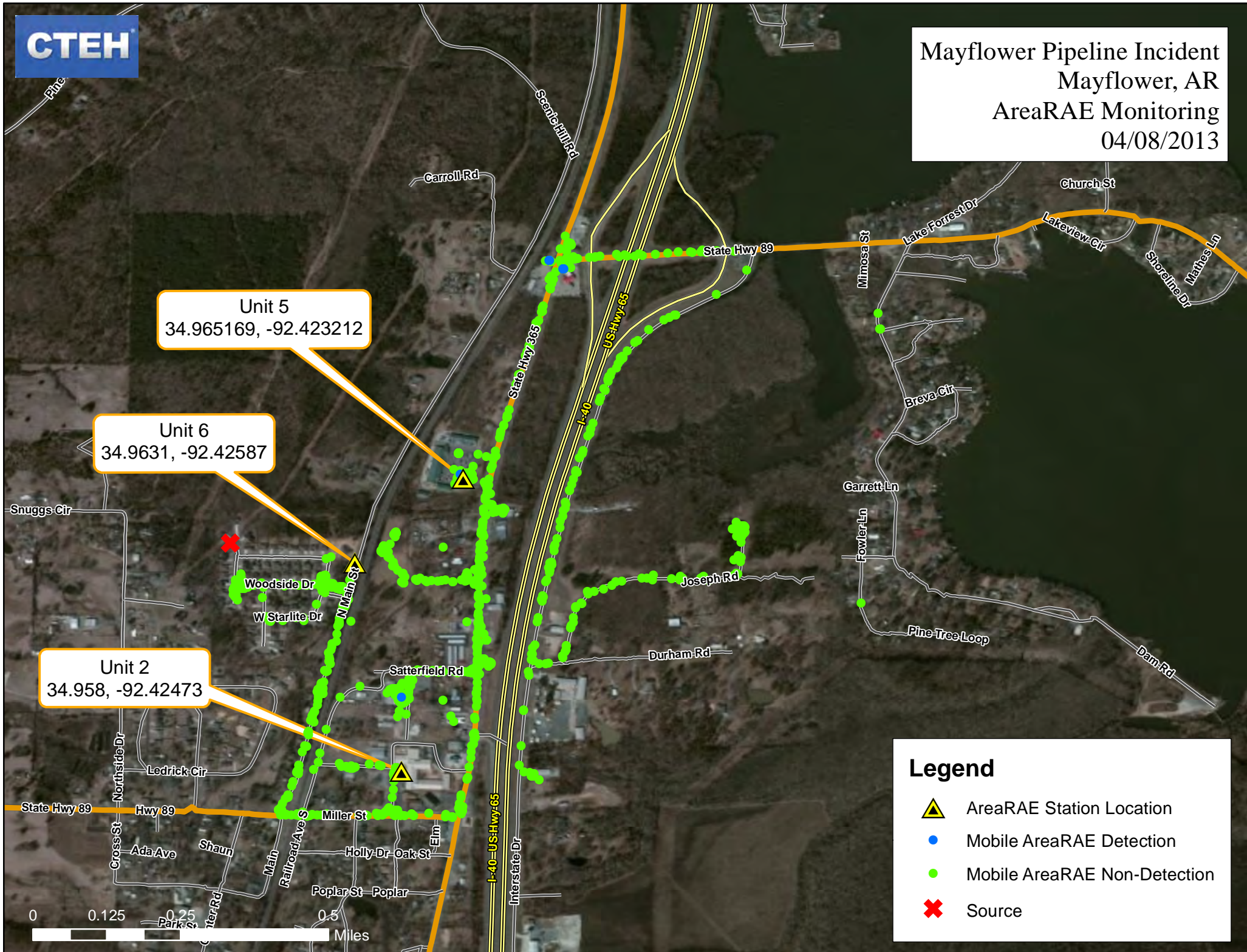
Legend

✖ Source

VOC Concentration (ppm)

- < 0.1
- 0.1 - 0.5
- 0.6 - 1.0
- 1.1 - 5.0
- 5.1 - 10.0
- > 10.0









Unit 5
34.965169, -92.423212

Unit 6
34.9631, -92.42587

Unit 2
34.958, -92.42473

Legend

-  AreaRAE Station Location
-  Mobile AreaRAE Detection
-  Mobile AreaRAE Non-Detection
-  Source