

2017

State of Recycling in Arkansas

Arkansas Department of Environmental Quality
Becky W. Keogh, Director

November 2017

Take Action for America Recycles Day

America Recycles Day is November 15, making November a great month to reflect on what makes recycling successful.

The Basics: Recycling is a three-step process represented by the three arrows in the recycling symbol. First, materials are collected. Second, these are used as raw materials for manufacturing new products. Third, these products are sold and used.

As with many other things in our society, recycling is market driven. A facility can collect tons of blue bottle caps, but if there is no market for them, they are still trash.

It Takes You: This report includes data collected annually about recycling in the state. While looking at the numbers, remember they result from individual actions. Yes, a business, institution, or community can institute a

recycling program or policy; however, it cannot make people recycle.

People need to learn what and how to recycle, keep recyclables separate, and get them to a collection point. Even if a community has curbside pickup, individuals still need to put recyclables in a container and take it to the curb. In many situations, recycling takes more effort.

Worth the Effort: Over the long term, recycling makes a valuable contribution to the environment, economy, and community. Conserving natural resources, creating jobs, preventing pollution, and helping sustain the environment for future generations are just a few of recycling's many benefits.

Take Action:

1. If you aren't recycling, start. Contact local officials to find out what and how to recycle.

2. If you are recycling, make sure to "recycle right"; i.e., put recyclables in and keep contaminants out. Items that don't belong in the bin can cause a load to be landfilled or machines to malfunction.
3. Help others understand community recycling rules and encourage them to recycle.



5301 Northshore Drive
North Little Rock, AR 72118
Phone: 501.682.0744
www.adeq.state.ar.us

2017 versus 2016

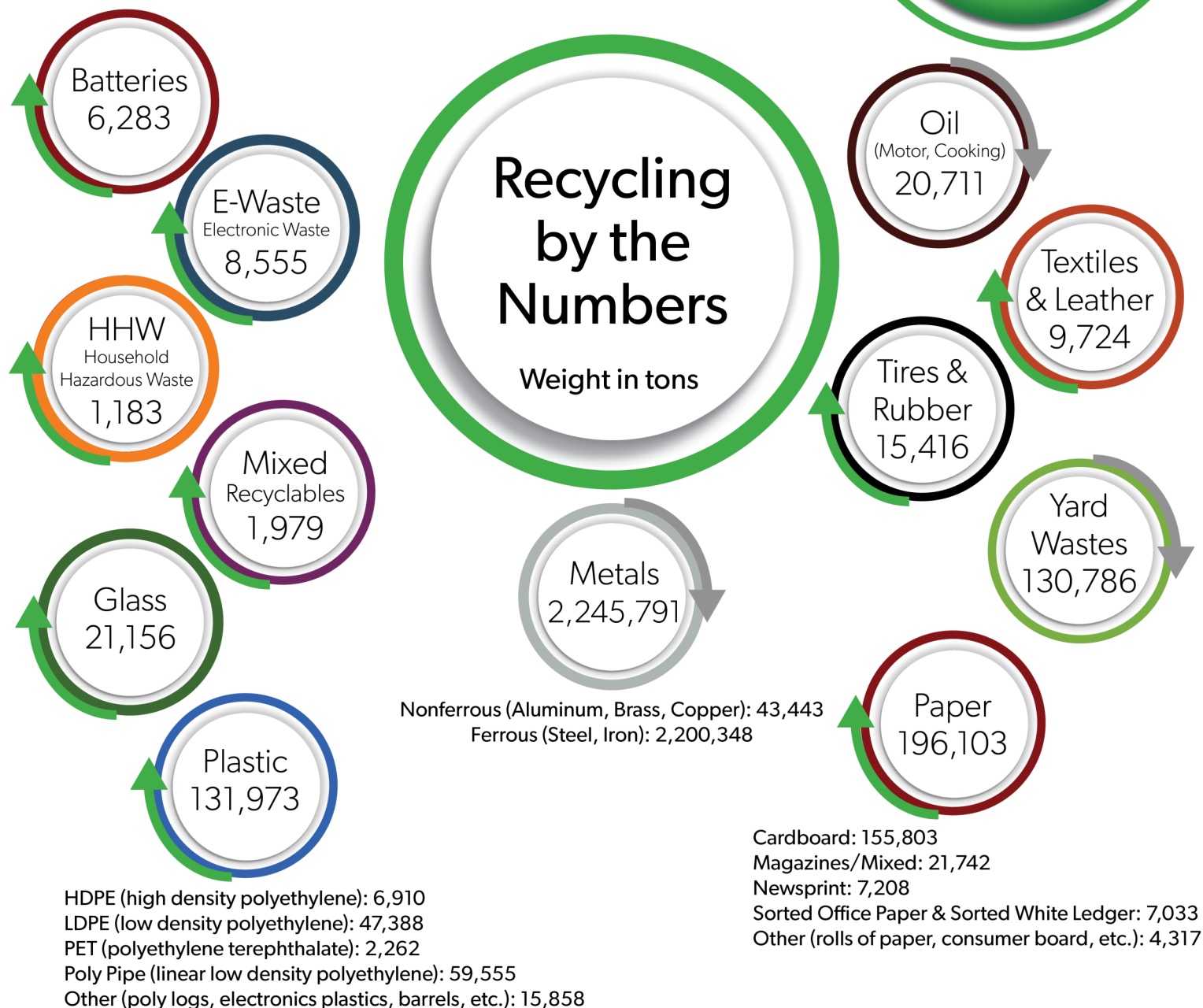
45.5%	Recycling Rate	46.6%
2,780,660	Tons Recycled	2,789,867
3,337,393	Tons Landfilled	3,191,461
240	Facilities Reporting	292
3,797	Full-time Employees	2,381
1,258	Part-time Employees	1,627

Materials Recycled: 2017

Businesses reported on calendar year 2016; community programs reported on fiscal year 2017 (July 1, 2016 – June 30, 2017).

↗ = increase compared to 2016
↘ = decrease compared to 2016

45.5%
Recycling
Rate



3,337,393 tons landfilled + 2,789,660 tons recycled = 6,127,053 tons total waste stream

Recycling Rate = Recycled/Total Waste Stream x 100

Arkansas also reclaimed 236,452 tons of road material (a decline from 2016); 105,110 tons of asphalt (also a decline); 26,504 tons of shingles (an increase from 2016); 24,686 tons of tire-derived fuel (also an increase); and 123,156 tons of wood waste for fuel (a decline) that were not included in the listed total.