

Craighead County Regional Solid Waste Management District

2017 Needs Assessment

1. DEMOGRAPHICS

1.1. Map of District (see Appendix A)

1.1.1. The Craighead County Regional Solid Waste Management District (CCRSWMD) is a single county district serving the citizens of Craighead County in northeastern Arkansas. Craighead County has an area of 717 square miles with a population of 105,835 according to the 2016 census. The county borders Greene, Mississippi, Poinsett, Lawrence and Jackson Counties in Arkansas and Dunklin County, Missouri. The terrain is primarily flat delta farm land with the exception of Crowley's Ridge dividing the county from north to south.

1.1.1.1. The county consists of the following cities:

- 1.1.1.1.1. Bay
- 1.1.1.1.2. Black Oak
- 1.1.1.1.3. Bono
- 1.1.1.1.4. Brookland
- 1.1.1.1.5. Caraway
- 1.1.1.1.6. Cash
- 1.1.1.1.7. Egypt
- 1.1.1.1.8. Jonesboro
- 1.1.1.1.9. Lake City
- 1.1.1.1.10. Monette

1.1.2. Locations of Solid Waste Facilities

1.1.2.1. CCRSWMD Facilities

- 1.1.2.1.1. Legacy Landfill
- 1.1.2.1.2. Lake City Transfer Station

1.1.2.2. Other Facilities

- 1.1.2.2.1. Abilities Unlimited Recycling Center
- 1.1.2.2.2. Marck Industries Recycling Center

- 1.1.2.2.3. TRG Recycling Center
- 1.1.2.2.4. Jonesboro Recycling Team
- 1.1.2.2.5. Ecoworks/Jonesboro Human Development Council
- 1.1.2.2.6. The City of Jonesboro Green-Waste Incinerator

1.2. Census Data

- 1.2.1. Current Population: 105,835
- 1.2.2. Population Change: +9,392, +9.7%
- 1.2.3. Estimated Population Change from 2010 to 2020: 15%
- 1.2.4. Current Housing Occupancy Statics:
 - 1.2.4.1. Total Housing Units: 40,515
 - 1.2.4.2. Occupied Housing Units: 37,291
 - 1.2.4.3. Vacant Housing Units: 3,224
 - 1.2.4.4. Percent Occupied: 92.0%

2. ADMINISTRATIVE STRUCTURE

2.1. Board Composition

- 2.1.1. Elected Members: There are no elected members of the CCRSWMD Board, all members are appointed.
- 2.1.2. Appointed Members:
 - 2.1.2.1. Brett Provost, Chairman, appointed by the Mayor of the City of Jonesboro, +9 years of service, appointment documents are not on file in the District files.
 - 2.1.2.2. Mitchell Fitts, Vice-Chairman, appointed by the Mayor of the City of Jonesboro, +2 years of service, appointment documents are not on file in the District files.
 - 2.1.2.3. Wayne Bond, Secretary, appointed by the Mayor of the City of Jonesboro, +11 years of service, appointment documents are not on file in the District files.
 - 2.1.2.4. Willis Tyler, Treasurer, appointed by the Mayor of the City of Jonesboro, +7 years of service, appointment documents are not on file in the District files.
 - 2.1.2.5. Michael Polk, appointed by the Mayor of the City of Jonesboro, +1 year of service, appointment documents are not on file in the District files.
 - 2.1.2.6. Derek McCormick, appointed by the Craighead County Judge, +3 years of service, appointment documents are not on file in the District files.
 - 2.1.2.7. Dan Shaw, appointed by the Mayors of the Cities of the Western District of Craighead County, +1 years of service, appointment documents are not on file in the District files.
 - 2.1.2.8. Jon Milligan, appointed by the Craighead County Judge, +1 years of service, appointment documents are not on file in the District files.
 - 2.1.2.9. Brett Provost, appointed by the Mayor of the City of Jonesboro, +4 years of service, appointment documents are not on file in the District files.
 - 2.1.2.10. Rick Miles, appointed by the Mayor of the City of Jonesboro, +2 years of service, appointment documents are not on file in the District files.

- 2.1.2.11. Garry Tate, appointed by the Mayor of the City of Jonesboro, +9 years of service, appointment documents are not on file in the District files.
- 2.1.2.12. Jerry “Chub” Qualls, appointed by the Mayors of the Cities of the Eastern District of Craighead County, +3 years of service, appointment documents are not on file in the District files.
- 2.1.3. Advisory Boards: Not Applicable.
- 2.1.4. Board Meetings:
 - 2.1.4.1. *How often does the Board meet?* The CCRSWMD Board meets once per month. In the event of a time critical decision a special meeting may be called by the Executive Director or any Board member.
 - 2.1.4.2. *Where does the Board meet?* The Board meets in the Conference Room of the Legacy Landfill Administration Building, 238 CR 476, Jonesboro, AR 72404.
 - 2.1.4.3. *How is the public notified of the meetings?* Regular monthly board meetings are announced in the Jonesboro Sun newspaper.
 - 2.1.4.4. *Is an Agenda of the Board Meeting provided to the public prior to the Board Meeting?* The agenda is available to the public upon request?

2.2. Public Participation

- 2.2.1. *Does the Board allow time during each meeting for the public to address the Board?* Yes, following the completion of the planned agenda items the board accepts comments or questions from the floor.
- 2.2.2. *Describe how the public is engaged in the decision-making process of the Board?* The Board is always open to public comments which are received either directly at regularly scheduled board meetings, E-mail, or conventional mail. The comments are presented to the whole board, discussed and a plan of action is determined.
- 2.2.3. *What mechanisms are used by the District to involve the public, industrial sector and business sector, and to inform them of Board activities? Are formal mechanisms in place?* Periodic interaction with the various sectors is on a case-by-case basis as the Executive Director is made aware of issues or opportunities. The press and

local news-media are the formal mechanisms to notify the public of Board activities.

- 2.2.4. *Describe the Certificate of Need procedures for obtaining public input regarding a solid waste facility's request for a new permit or renewal of an existing permit.* Following a review and determination that a petition for a Certificate of Need is complete, the District will notify the petitioner and publish a notice of the review period once a week for two consecutive weeks in a newspaper of general circulation in the area of the proposed facility. The review period will begin on the date of the first publication and will run for sixty (60) days. During the period, public comment will be received on the petition. During the sixty (60) day review period, CCRSWMD will conduct a public hearing within the county where the proposed facility or major modification is to be located.

2.3. District Administration

- 2.3.1. *List all staff that is in the direct employment of the RSWMD.* The District does not have any employees or payroll. The CCRSWMD administers the State Recycling Grant programs for the Craighead County Solid Waste Disposal Authority (CCSWDA) and therefore has no employees. The CCSWDA which operates the Legacy Landfill and the Lake City Transfer Station supports the District's recycling services with labor and machinery as needed.
- 2.3.2. *Include the name, title, whether full or part-time, number of years, and any certifications held that relate to solid waste issues.* Not Applicable.

2.4. Contractors, Consultants, Service Providers, and Volunteers

- 2.4.1. *What administrative functions are 'farmed-out' or contracted to consultants?* The CCSWDA provides the services of their Executive and Deputy Director to the CCRSWMD free of charge. The Deputy Director administers all grant programs for the District.
- 2.4.2. *What non-administrative functions are 'farmed-out' or contracted to consultants?*
- 2.4.2.1. The District contracts with a Private Consultant as a Recycling Education Coordinator for public outreach, education, and training of Environmental Educators in our county school system.

- 2.4.2.2. CCSWDA provides the labor, machinery, and facilities to the District for the handling and transportation of recyclables.
- 2.4.3. *Does a formal contract exist between the District and the contractor for the purpose of providing services?* No.
- 2.4.4. *What is the length of term of the contract?* Not Applicable.
- 2.4.5. *From the contractor, complete an inventory of staff that is involved in solid waste administration. Include the name, title, whether full or part-time, number of years in position, and any certifications held that relate to solid waste issues.* Not Applicable.
- 2.4.6. *List volunteer programs currently in place. Identify how they function within the District.*
 - 2.4.6.1. The Jonesboro Chamber of Commerce Green Business Committee - The goal of the Environment Committee is to improve the quality of life in Jonesboro and the region by organizing and supporting events and initiatives which educate the public regarding preservation and conservation of the region's natural resources and the environment. Each year, they sponsor the Great Arkansas Clean-Up, and Community Recycles Day. In April, the Environment Committee hosts the annual Paint the Town Green week, which includes a Go Green Lunch, Ego-magination contest in the local schools and a Tree Planting.

2.5. Solid Waste Authorities

- 2.5.1. *If any, please list any solid waste authorities that operate within the RSWMD.* Craighead County Solid Waste Disposal Authority (CCSWDA).
- 2.5.2. *List their Board members and the city/county they represent.*
 - 2.5.2.1. Brett Provost, Chairman, appointed by the Mayor of the City of Jonesboro, +9 years of service, appointment documents are not on file in the District files.
 - 2.5.2.2. Mitchell Fitts, Vice-Chairman, appointed by the Mayor of the City of Jonesboro, +2 years of service, appointment documents are not on file in the District files.

- 2.5.2.3. Wayne Bond, Secretary, appointed by the Mayor of the City of Jonesboro, +11 years of service, appointment documents are not on file in the District files.
 - 2.5.2.4. Willis Tyler, Treasurer, appointed by the Mayor of the City of Jonesboro, +7 years of service, appointment documents are not on file in the District files.
 - 2.5.2.5. Michael Polk, appointed by the Mayor of the City of Jonesboro, +1 year of service, appointment documents are not on file in the District files.
 - 2.5.2.6. Derek McCormick, appointed by the Craighead County Judge, +3 years of service, appointment documents are not on file in the District files.
 - 2.5.2.7. Dan Shaw, appointed by the Mayors of the Cities of the Western District of Craighead County, +1 years of service, appointment documents are not on file in the District files.
 - 2.5.2.8. Jon Milligan, appointed by the Craighead County Judge, +1 years of service, appointment documents are not on file in the District files.
 - 2.5.2.9. Brett Provost, appointed by the Mayor of the City of Jonesboro, +4 years of service, appointment documents are not on file in the District files.
 - 2.5.2.10. Rick Miles, appointed by the Mayor of the City of Jonesboro, +2 years of service, appointment documents are not on file in the District files.
 - 2.5.2.11. Garry Tate, appointed by the Mayor of the City of Jonesboro, +9 years of service, appointment documents are not on file in the District files.
 - 2.5.2.12. Jerry "Chub" Qualls, appointed by the Mayors of the Cities of the Eastern District of Craighead County, +3 years of service, appointment documents are not on file in the District files.
 - 2.5.2.13. This is exactly the same board members as the District.
- 2.5.3. *Discuss their function and how that relates to management of the District.* The CCRSWMD was created on April 17, 1991 by the CCSWDA. At that time the Authority voted that the two boards would utilize the same members and officers. The District is responsible for

all of the recycling activities in the county and the Authority is responsible for the disposal of solid waste in the county.

2.5.4. *Are there any authority members that serve on the District's Board?*
Yes, the two entities share the same board members.

2.5.4.1. *If so, please list them and the public entity they represent.*
(See 2.5.2 above).

2.6. Administrative Procedures and Other Documents

2.6.1. *Are the RSWMD's current Rules, Regulations, and Procedures approved by the Board? Effective date?* Yes, various dates beginning on 02/17/93 thru 04/27/99.

2.6.2. *Have they been filed with the Arkansas Secretary of State? How was the public involved in development of the District's Rules, Regulations, and Procedures?* Yes. Through the publication of legal notices in a newspaper of general circulation in the District along with a Public Hearing.

2.6.3. *Append a copy of the district's approved Rules, Regulations, and Procedures. Include any amendments.* See Appendix B – District Rules and Regulations.

2.7. Administrative Funding

2.7.1. *Provide the following information regarding how the district is funded and the percentages of that funding source when compared to the entire district budget. In the following manner, list the most recent annual funds received from ADEQ for administrative purposes:*

a. Recycling Grants -	<u>\$140,222.00</u>
b. Waste Tire Grants -	<u>\$186,410.45</u>
c. Other grants (identify Source) <u>E-Waste</u>	<u>\$ 79,955.00</u>
d. Total administrative funds from Grants	<u>\$406,587.45</u>

Next, list all administrative fees levied and collected by the District.

Source	Most Recent Annual Dollar Amount	% of total
ADEQ GRANTS (from d above)	<u>\$406,587.45</u>	<u>80%</u>
Local Sources:		
Hauler Licensing	<u>\$8,383.32</u>	

Taxes	\$ _____	
Per Capita Fee	\$ _____	
Assessment/Tipping	<u>\$61,577.88</u>	
Collection Fee	\$ _____	
Other* - Tire Fees	<u>\$28,323.15.00</u>	
Interest	<u>\$366.59</u>	
Sale of Equipment	<u>\$0</u>	
Total Local Revenue	<u>\$98,650.94</u>	20%
Total Annual Funds	<u>\$505,238.39</u>	100 %

2.8. RSWMD Budget

- 2.8.1. *Provide a copy of the most recent annual budget for the RSWMD.* The District does not have an Operating Budget as the CCSWDA operates the facility, its equipment, and employees. The District does have an Annual Recycling Program Spending Plan that defines what items are funded and to what extent utilizing the available District Funds.
- 2.8.2. *Who approves the annual operating budget for the district?* The Annual Recycling Program Spending Program is approved the District Board.

2.9. Public Education and Support

- 2.9.1. *Provide information on the programs and resources utilized by the district to provide education to the general public.*
- 2.9.1.1. The District contracts with a private consultant, who serves as the Recycling Education Coordinator. She provides the following services:
- 2.9.1.1.1. Public Outreach including recycling information programs to civic groups, neighborhood associations, women's clubs, newcomers, church groups, garden clubs, and public and private schools.
- 2.9.1.1.2. Training Educators through annual Teacher In-Service days, Seminars, and Field Trips. The summer Teacher In-Service is very popular as

the District has trained and certified approximately 100 educators to-date. Through this same program and the interest that it has created the District has also certified and recognized eight (8) schools as Environmental Schools.

- 2.9.1.2. The District promotes recycling in the local newspaper, social media (Facebook), distribution of flyers, the “Kurby Blue Bag” Program.
- 2.9.1.3. The CCRSWMD also provides tours of the landfill to various groups including K-12 schools, Arkansas State University Groups, the Chamber Leadership Classes, and to anyone who requests a tour. We are always ready to show-off our facility and explain what and why we do the things we do.
- 2.9.2. *How is the public informed of the goals and objectives, as well as achievement of the goals?* Through the Jonesboro Sun newspaper, KAIT 8 Television Station and Social Media.
- 2.9.3. *How is the public informed of the services, available facilities, and programs of the District?* Through the Jonesboro Sun newspaper, KAIT 8 Television Station and Social Media.
- 2.9.4. *How is the public involved in the planning and participation of events and programs supporting the district’s goals and objectives?* The public is informed via the various forms of public & social media and comments are requested. Also, the Chamber of Commerce Environment Committee is consulted for input and ideas on the programs under consideration.

2.10. Programs for Elimination of Illegal Dumping and Open Burning

- 2.10.1. *Explain the RSWMDs programs, enforcement efforts, and public education initiatives to eliminate open burning and burn barrels within the District.*
 - 2.10.1.1. The District pays a portion of Randy Sharp’s salary as Craighead County Deputy/Environmental Officer to patrol the District and to investigate complaints related to illegal dumping. In addition to being a Certified Law Enforcement Officer the District has paid for Mr. Sharp to be trained and certified as an Illegal Dumps Control officer.

- 2.10.1.2. Mr. Sharp and our Recycling Education Coordinator, represent the District at public meetings, schools, clubs, etc. to discuss the Districts programs on the elimination of open burning and illegal dumps.
- 2.10.2. *Provide information on current illegal dump site locations and what programs the District has in place to eliminate these sites.* We are not aware of any illegal dump sites currently in the district.
- 2.10.3. *Provide the names of all licensed Illegal Dump Control Officers within the RSWMD.* Mr. Randy Sharp, Craighead County Deputy/Environmental Officer.

3. **Waste Categories**

3.1. **Residential and Commercial Waste Estimation**

105,835 people*4.43lbs/person/day*365 days/2000 lbs/ton=85,564.95 tons

3.2. **Municipal Solid Waste Makeup**

Waste Type	% of Waste Stream	Annual Tonnage
Paper & Paperboard	28.5%	24386.03
Food Scraps	13.9%	11893.54
Yard Trimmings	13.4%	11465.71
Plastics	12.4%	10610.06
Metals	9.0%	7700.85
Rubber & Textiles	8.4%	7187.46
Wood	6.4%	5476.16
Glass	4.6%	3935.99
Other	3.4%	2909.21

3.3. **Industrial Waste Generation**

3.3.1. The District conducted a survey based upon the form supplied by ADEQ. The surveys were mailed to 81 industries as identified by the Jonesboro Chamber of Commerce mailing list. This list is located in Appendix C.

3.3.2. A list of Industries within the District was developed from information received from the Jonesboro Chamber of Commerce.

3.3.3. Of the 81 industries surveyed, the District received feed-back from 20.

3.3.3.1. Generators Name and Location is on the following spreadsheet.

3.3.3.2. The breakdown for types of waste are on the following spreadsheets.

3.3.3.3. The annual volumes of industrial waste are on the following spreadsheets.

3.3.3.4. The waste recycled is also on the following spreadsheets.

3.3.3 - Tally of Industrial Surveys

	Industry Name	MSW	Liquid	Sludge	Medical	Cardboard	Paper	Wood	Empty Drums	Metals	Feed	Oil	Cost	Remarks
1	Aleaxander Machine Shop					51								6 cyd weekly
2	Apex Tool Group	90.94		6	1							3.25	\$44.00/ton	120 tons paint
3	Arkansas Glass Container	1063.92	56	157										
4	Forrest Office Machines													
5	Great Dane				182.1									
6	JMC of Jonesboro												\$ 3,036.65	
7	Lens Master													
8	Master Group													1/4 ton of Ink
9	Midsouth Tackle													
10	Nelson Printing Inc.	26												
11	Nestle Prepared Foods	4330	5400											530 tons FOG
12	Optus	39				45								
13	Pasmore Priting													
14	Robert Jones/Stadium													
15	Robert Jones/Stadium													
16	Trinity Lighting													
17	Un-named													
18	Un-named													
19	Engines Inc.	31.97												
20	Nice Pak Products, Inc.	4270	10521											
21														
22														
	Totals	9851.83	15977	163	183.1	96	0	0	0	0	0	3.25	\$ 3,036.65	

All of the above industries are located in Jonesboro, AR

Craighead County Regional Solid Waste Management District

District Summary of Industrial Survey Forms

The report period requested is for materials received January 1 to December 31, 2017

Type of Industrial Waste	Annual Est. Volume in Tons	Material Disposition Landfill, Recycled, etc.	In-State Disposal Location	Out of State Disposal Location	Hauler of Material
MSW	9852	Landfill	Legacy Landfill		Varies
Liquid Waste	15977		Jonesboro/Little Rock		L-Sustain
Sludge Waste	163			West Memphis, AR	ATM Oil
Medical Waste	0.09		Harrison, AR		Medical Waste Services
Other					
Cardboard	96	Recycled	Jonesboro		Marck Industries
Oil	3.25	Recycled	Benton, AR	3.25	Rinco

Provide a list of businesses surveyed.

See the attached spreadsheet

What is the approximate annual cost of current waste transportation and disposal at facilities in the District?

Unknown, most of the few respondents did not provide a cost.

If any, please explain any predicted changes in types or quantities of industrial non-hazardous waste in the foreseeable future?

No changes are expected.

Do any industries in the District have a waste diversion or sustainability plan?

Some of the large corporations, especially in the food industry are at or nearing zero landfill.

If yes, please explain, include a copy, or provide access, if possible.

List any suggestions for State Regulations that area business see as beneficial if implemented or changed in the future?

2018 Needs Assessment

4. Waste Collection, Recycling, and Disposal

4.1. Existing Solid Waste Management Facilities

- 4.1.1. **Landfills** – The Craighead County Solid Waste Disposal Authority operates the only Class 1 landfill in the District.
- 4.1.2. **Other Solid Waste/Recycling Facilities**
 - 4.1.2.1. Abilities Unlimited Recycling Center, 806 Burke St., Jonesboro, AR 72401.
 - 4.1.2.2. Marck Recycling and Waste Services, 300 Missouri St., Brookland, AR 72417.
 - 4.1.2.3. TRG Jonesboro LLC, 130 South Flint St., Jonesboro, AR 72401
 - 4.1.2.4. Jonesboro Recycling Team, 5403 Vance Drive, Jonesboro, AR 72403
 - 4.1.2.5. Ecoworks /Jonesboro Human Development Council, 4901 Stadium Blvd., Jonesboro, AR 72404
 - 4.1.2.6. The City of Jonesboro Green-Waste Incinerator, 2650 Lacy Dr., Jonesboro, AR 72401
- 4.1.3. **Facilities Map** – See Appendix A
- 4.1.4. **Landfill Information** – Legacy Landfill operated by the CCSWDA is the only Class I landfill within the District. Legacy Landfill also accepts Class IV and Class III green-waste incinerator ash from the City of Jonesboro. (See Appendix E for the District Summary)
 - 4.1.4.1. The annual solid waste received by the landfill including Class I, III, and IV is approximately 123,737 tons.
 - 4.1.4.2. All of the waste received at the landfill is from within the District. At this present time we do not allow waste outside of the District.
 - 4.1.4.3. The remaining life of the current cell 2-3 as of December 2017 is 0.8 years. However construction of a new 12-acre cell is scheduled for the spring of 2018 cell providing approximately 5 years in the current location.

- 4.1.4.4. Expansion plans are to continue to develop new cells on the 297 acres permitted at the current Legacy Landfill site which is estimate to provide in excess of 100-years of service life.
- 4.1.4.5. There are no immediate plans for closure of this site due to the reason sated above in 4.1.4.4.

4.2. Transfer Stations

- 4.2.1. The CCSWDA operates one transfer station within the district. The Lake City Transfer Station is located at 12662 Hwy 18 East, Lake City, AR 72437. (See Appendix E for the District Summary)
 - 4.2.1.1. The services provided at this facility are:
 - 4.2.1.1.1. Municipal Solid Waste (Class I) from municipal and commercial haulers using automatic cart trucks.
 - 4.2.1.1.2. Light Industrial and Commercial wastes from contract haulers using roll-off type boxes.
 - 4.2.1.1.3. Construction debris (Class IV) from utility trailers and roll-off boxes.
 - 4.2.1.1.4. Metal and white goods recycling.
 - 4.2.1.2. Recycling services include metal and white goods.
 - 4.2.1.3. Composting is not a service that is offered at the transfer station.
- 4.2.2. See Appendix A for a map of the District Facilities.
- 4.2.3. All solid waste collected at the transfer station is transferred to the Legacy Landfill for either disposal in the landfill or recycling.

4.3. All Other Facilities

- 4.3.1. The district does not operate any other facilities in the district. For recycling or green-waste disposal see 4.1.2 above.

4.4. For Each Facility

- 4.4.1. District Facilities
 - 4.4.1.1. **Legacy Landfill**
 - 4.4.1.2. 238 CR 476, Jonesboro, AR 72404

- 4.4.1.3. Robert D. Hendrix, PE CFM, Executive Director, Phone 870-972-6353, FAX 870-972-0495,
E-mail: rhendrix@ccswda.com.
- 4.4.1.4. Class I Landfill
- 4.4.1.5. Remaining Capacity 126,200 cubic yards, 0.8 years in cell 2-3. Does not include new cell 1-2 expansion proposed in spring of 2018.
- 4.4.1.6. **Lake City Transfer Station**
- 4.4.1.7. 12662 Hwy 18 East, Lake City, AR 72437.
- 4.4.1.8. Robert D. Hendrix, PE CFM, Executive Director, Phone 870-972-6353, FAX 870-972-0495,
E-mail: rhendrix@ccswda.com.
- 4.4.1.9. Transfer Station
- 4.4.1.10. Capacity is limited to the capacity of the trucks that move the material from the transfer station to Legacy Landfill. If necessary we will add more trucks.

4.5. Solid Waste Collection Systems

- 4.5.1. Provide a table of the existing solid waste collection systems within the RSWMD.

(See the Spreadsheet on the following page)

Waste Services by Municipality

Municipality	Collection Service	Collection Agreement	Revenue Source	Monthly Cost	Collection Frequency	Disposal Site
Bay	Dedman's Sanitation Bay	Exclusive Service Contract	Mandatory Fee with Water Bill	\$ 11.00	Residential 1/week Commercial 2/week	Legacy Landfill
Black Oak	Dedman's Sanitation Bay	Residential Service Contract	Mandatory Fee with Water Bill	\$ 14.00	Residential 1/week Commercial 1/week	Lake City Transfer Station/ Legacy Landfill
Bono	Disposal Solutions Jonesboro	Exclusive Service Contract	Mandatory Fee with Water Bill	\$ 11.00	Residential 1/week Commercial 1/week	Legacy Landfill
Brookland	Dedman's Sanitation Bay	Ordinance	Mandatory Fee with Water Bill	\$ 13.00	Residential 1/week Commercial per contract	Lake City Transfer Station/ Legacy Landfill
Caraway	Dedman's Sanitation Bay	Exclusive Service Contract	Mandatory Fee with Water Bill	\$ 13.00	Residential 1/week Commercial 1/week	Lake City Transfer Station/ Legacy Landfill
Cash	Dedman's Sanitation Bay	Exclusive Service Contract	Mandatory Fee with Water Bill	\$ 10.00	Residential 1/week Commercial 1/week	Legacy Landfill
Egypt	Dedman's Sanitation Bay	Exclusive Service Contract	Mandatory Fee with Water Bill	\$ 14.00	Residential 1/week Commercial 1/week	Legacy Landfill
Jonesboro	Residential -City Service Commercial - Various	Municipal	Municipal Sales Tax	\$ -	Residential 1/week Commercial per contract	Legacy Landfill
Lake City	City Service	Municipal	Mandatory Fee with Water Bill	\$ 12.00	Residential 1/week Commercial per contract	Lake City Transfer Station/ Legacy Landfill
Monette	City Service	Municipal	Mandatory Fee with Water Bill	\$ 7.60	Residential 1/week Commercial per contract	Lake City Transfer Station/ Legacy Landfill
County	Various	Residential Service Contract	Monthly or Quarterly Bill	\$ 16.00	Residential 1/week Commercial per contract	Varies

4.6. Collection Service Providers

- 4.6.1. *Determine the cost of services for residential services (garbage, recycling, bulky waste, yard waste, and other services).*
- 4.6.2. *Each collection company should provide the number of accounts (residential, commercial, and industrial).*
- 4.6.3. *Include the volume of material delivered to end point facility (landfill, transfer station, recycling center, compost center, etc).*

District Summary of Hauler Survey Forms

District Name: Craighead County Regional Solid Waste Management District

The report period requested is for materials received January 1 to December 31, 2017

Type of Customer	# of Accounts	Annual Volume in Tons	# of Licensed Trucks	# of Routes	Type of Material
Residential	28000+	111226.94	37	43	
Commercial		42818.89	11	30	
Medical Waste					
C & D Material					
Recycling	28000+	320.26	5	4	
Industrial					
Other		268.3	3	1	Greenwaste Incinerator Ash
Totals					

Attach a list of Haulers and the Disposal Facilities they use with this completed form.

City of Jonesboro City of Monette Dedman's Sanitation

Include a highlighted District-wide street-level map showing the combined Haulers' Services Areas.

These three combined service the entire District.

*Note: The data for the above District Summary is based upon information provided by three (3) completed Hauler Survey forms.

4.7. Waste Hauler/Transporter Information - Please Provide the following information for each Waste Hauler/Transporter:

- 4.7.1. *Name of Hauler/Transporter* (See Appendix D)
- 4.7.2. *Contact Information* (See Appendix D)
- 4.7.3. *Hauler Equipment List and Hauling Capacity.* (See Appendix D)
- 4.7.4. *Detailed map showing coverage area served by the hauler. (This map should provide coverage on a street level of detail.)* The Haulers listed in Appendix D may serve customers in other districts, but the service-area for the purposes of this report are limited to Craighead County. See Appendix A for service area.
- 4.7.5. *Type(s) of materials transported, including commercial and industrial wastes.* (See Appendix D)

4.8. Import/Export Status

- 4.8.1. *Provide a list of the types and estimated annual volume of waste generated within the jurisdictional area of the District and shipped out of the District and/or out of state for management or disposal.* Our County/District has a strict Flow Control Ordinance and the transport of solid waste outside the District is not allowed.
- 4.8.2. *Provide a list of the types and estimated annual volume of waste imported into the District for management or disposal.* While our Flow Control Ordinance does not prohibit incoming waste as a practice we do not knowingly accept the importation of solid waste into the District.
- 4.8.3. *Provide a list of haulers that pick up Arkansas generated waste in District and transport it out of state for disposal.* Not Applicable.

“Executive Summary”

- E.1** *The executive summary should provide an overall evaluation of the current state of solid waste within the RSWMD, thereby satisfying the requirements of A.C.A. §8-6-716.* The District is fortunate to be supported by the CCSWDA in that the Authority accepts the responsible for the ownership and operation the landfill and transfer station which provides a source of income for the solid waste disposal within the District. Therefore the District is allowed to focus its efforts and finances on recycling. The CCRSWMD and the CCSWDA are in excellent shape as far as landfill capacity and future growth as stated in paragraph 4.1.4 above. The Authority has plans to open a new cell that will provide 5 to 6 years of disposal space. Solid waste disposal is not a problem for the next 10 years or more.
- E.2** *It should identify areas where planning is needed to address capacity issues within the district. It should evaluate the need for landfill capacity, as well as the need for recycling facilities, C&D recovery facilities, waste to energy facilities, compost facilities, as well as other opportunities to divert waste from landfills.* As stated in E.1 above disposal space is not a need in the District. The opportunities I see are in the areas of increasing recycling opportunities and composting. We currently have a limited recycling program and have just entered into a new partnership with Abilities Unlimited to process plastics, aluminum cans, tin cans, and glass. This program is working very well but has room to grow and add more volume and more items. The limitation now is in operating funds primarily for new equipment and also to supplement the collection cost. The District's sources of funding are the various recycling grants from ADEQ and a \$0.50/ton waste assessment fee collected at by CCSWDA. I believe that the District along with the Cities and County should give consideration to other sources of recycling operating funds, such as Federal and/or private grants, fees, and perhaps a county wide sales tax.
- E.3** *It should give an overview of the transportation effectiveness within the district including adequacy of transfer stations in meeting strategic movement of waste to landfills within the district, as well as out of district/state disposal locations.* The collection system and infrastructure appears to be working very well at the present and with the construction of a new larger transfer station placed in service over 7 years ago. I do not anticipate any collection problems in the next ten (10) years.
- E.4** *The summary should also include any recommendations for regulatory and statutory changes needed for the safe and environmental protection of the state's natural resources.* I see no need for revision to the regulatory or statutory code related to the operation of landfills at this time.

E.5 *The adequacy of funding within the RSWMD should be discussed for future needs of the district.* As mentioned above, the CCSWDA landfill and transfer station are well funded through the tipping fees collected from the various waste haulers and cities. The financial need the District faces is in growing the recycling business and providing additional services to the public. Additional State Grants would be welcomed but we understand the fiscal climate faced at the state level and I believe that the District will need to seek funds elsewhere. The funds we currently receive are being fully utilized providing a good recycling system but we are not where we could be with additional funds.

Respectfully Submitted by:

A handwritten signature in blue ink that reads "Robert D. Hendrix". The signature is written in a cursive, flowing style.

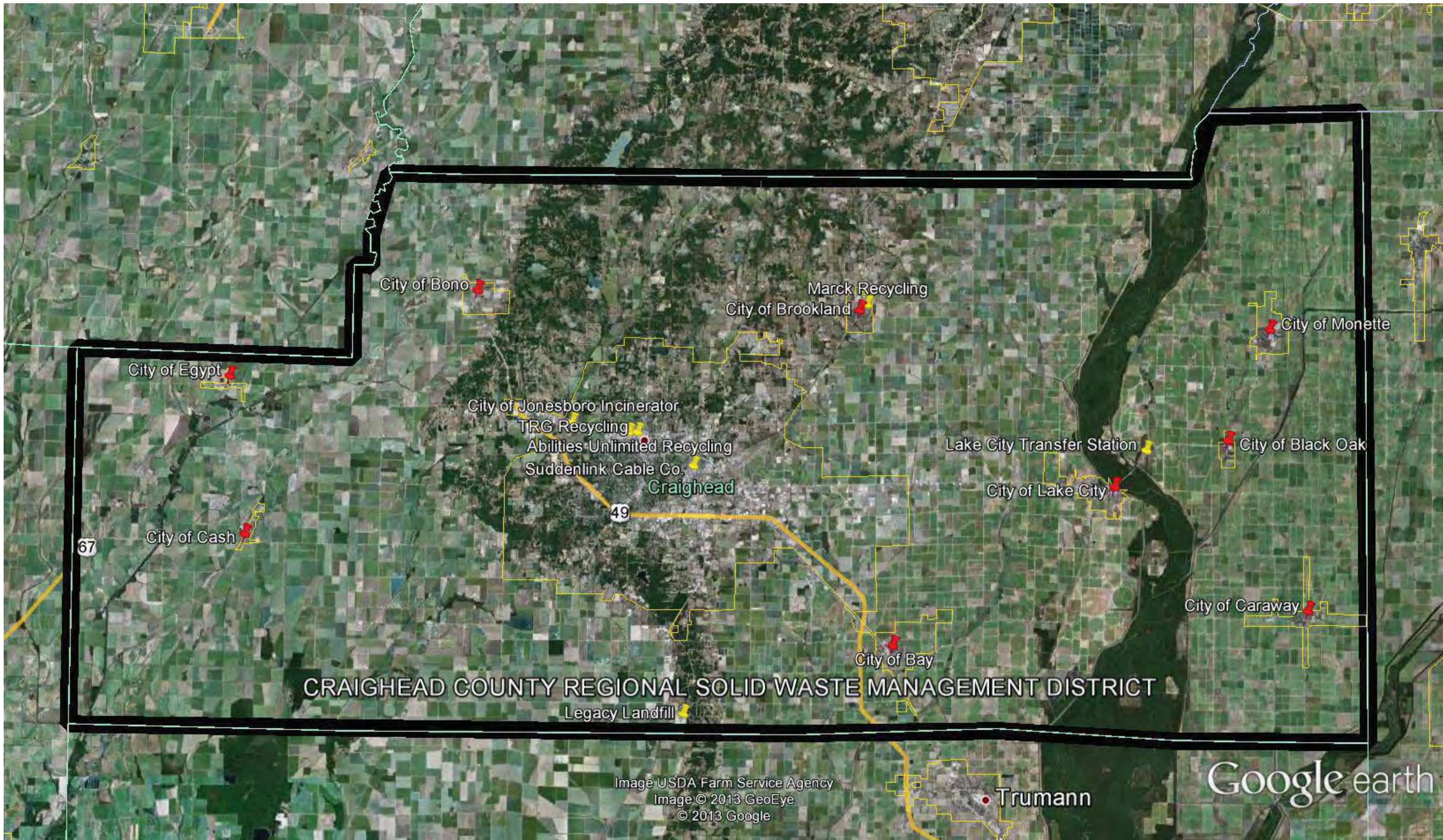
Robert D. Hendrix, PE, CFM

Executive Director

March 23, 2018

APPENDIX A

DISTRICT MAP



APPENDIX B

DISTRICT RULES & REGULATIONS

08/14/2002

CRAIGHEAD COUNTY REGIONAL SOLID WASTE MANAGEMENT DISTRICT

Formally Adopted Rules and Regulations

Table of Contents

Date Adopted	Title	Pocket No.
02/17/93 08/20/97	Program for Licensing Haulers of Solid Waste (as amended)	001
04/21/93	Regulation Restricting Out of District Transfer of Solid Waste	002
01/20/99	Regulation to Facilitate Accurate Documentation of all Municipal Solid Waste Generated within the District and its Proper Disposal	003
04/27/99	Rules Regarding Procedure for obtaining Certificate of Need Pursuant to the Provisions of Arkansas Code annotated § 8-6-706	004

CRAIGHEAD COUNTY REGIONAL SOLID WASTE MANAGEMENT DISTRICT

Program for Licensing Haulers of Solid Waste (As Amended August 20, 1997)

PURPOSE:

The Craighead County Solid Waste Management Board is required by Act 752 of 1991 to enact and enforce a licensing program for all haulers who collect or transport solid waste in the Craighead County Regional Solid Waste Management District. The purpose of this licensing program is to better manage and monitor the collection and transportation of solid waste by haulers in the District. It shall be the responsibility of every local government in the District to provide an adequate system of collection and transportation of solid waste within their respective jurisdiction as outlined in these standards. Specifically, each city in the District and Craighead County shall develop and enforce local requirements consistent with this licensing program.

DEFINITIONS:

Person - Any state agency, municipality, governmental subdivision of the state or the United States, public or private corporation, individual, partnership, association or other entity.

Hauler - A person engaged in the collection and/or transportation of solid waste for disposal or storage. Hauler does not include a person transporting his household waste to a permitted facility.

Solid Waste - Any refuse resulting from industrial, commercial, agricultural, and community and residential activities. Waste identified in **LICENSING STANDARDS AND REQUIREMENTS**, Section (B) 6, shall not be defined as solid waste.

Process Waste - Solid Waste resulting from an industrial/manufacturing and/or processing operation.

SCOPE:

(A) A person who engages in the business of hauling solid waste must obtain a license from the Craighead County Regional Solid Waste Management Board if:

1. The person is engaged in the collection of solid waste within the District; or
2. is engaged in the transportation of solid waste for disposal or storage in the District.

(B) A license will only be issued to a person, partnership, corporation, association, the State of Arkansas, a political subdivision of the State, an improvement district, a sanitation authority, or another regional solid waste management district. The District may in the future engage in the hauling of solid waste within its own District without licensure, but will comply with all applicable standards required hereunder.

(C) The local governments in the District and the County government may obtain a special general hauling license for additional vehicles as deemed necessary for special events such as "Clean Sweep" and clean up due to natural disasters such as flooding, tornadoes, etc. Issuance of the special permits, and duration thereof, shall be at the discretion of the Executive Director of the Craighead County Solid Waste Management Board.

LICENSING STANDARDS AND REQUIREMENTS:

These standards shall apply to all commercial haulers have more than one vehicle or a single vehicle with a capacity of more than five (5) cubic yards. For the purpose of this program a license shall not be required for an individual hauling his own household waste to a permitted facility.

(A) Any person who transports solid waste shall:

1. Hold the appropriate drivers license as defined by Arkansas State law.
2. Annually register all waste hauling vehicles with the Craighead County Regional Solid Waste Management District providing:
 - (a) Name, address, and telephone number of vehicle owner
 - (b) Description of each vehicle to be licensed, to include:
 - Make, model and year of vehicle
 - vehicle ID number
 - license plate number
 - (c) Name and type of business involved

(B) All collection and transportation systems shall meet the conditions outlined below. Failure to comply with these conditions may result in a revocation of the hauler's license.

1. Solid waste shall be collected and transported so as to prevent public health hazards, environmental hazards, safety hazards and nuisances.
2. Collection and transportation equipment shall be designed and constructed so as to be as leak-proof as practical. The waste shall be suitably enclosed or covered so as to prevent roadside littering, attraction of vectors or creation of other nuisances.
3. Collection and transportation vehicles shall be kept in a sanitary condition.
4. Regular collection days shall be established as appropriate. Collection shall be performed as necessary.
5. Appliances, furniture and other solid waste which cannot be collected during regularly scheduled pickups shall be collected as frequently as necessary and in accordance with the approved solid waste management system plan for the local government.

6. Collection and transportation of chemicals, poisons, explosives, radiological wastes and other hazardous materials shall be in accordance with the requirements of state and federal regulatory controls. These waste are specifically prohibited from disposal at the Craighead County Solid Waste Disposal Authority landfill.

7. Collection and transportation of waste tires shall be in accordance with the "waste tire collector requirements" described under Section 15 of the Arkansas Department of Pollution Control and Ecology Waste Tire Program Regulation Number 14, dated June 1992.

(C) Any hauler applying for a license must provide proof of vehicle liability insurance, with minimum coverage as required by State law.

FEES:

(A) The Craighead County Regional Solid Waste District shall assess the following annual fees for licensing vehicles that haul solid waste within the District:

1. Flat rate of \$25.00 per vehicle, if licensed by January 31.
2. February 1, late penalty will be in effect (double the cost - \$50.00 per vehicle), and only those vehicles properly displaying permits will be allowed to haul solid waste in Craighead County.
3. District personnel will conduct random or specific on-scale or on-floor inspections. Specific inspections occur when apparent unsuitable conditions exist, such as hydraulic oil leaks, material spilling, or sanitation truck seals are not working. Inspection procedures will be employed every working day throughout year. An inspection form will be completed and signed by District employee and driver. If a deficiency is noted, permit will be revoked immediately. A new permit will be issued provided that a second inspection is completed at no charge, within 30 days from the revocation date. If vehicle is not re-inspected within 30 days, it may be re-permitted following successful inspection and payment of an additional \$50.00 per vehicle.

(B) No fee will be required for the issuance of the special general hauling license to the County government or local governments in the District for additional vehicles as deemed necessary for purposes contained in SCOPE, Section (C) above.

PROCEDURES:

Procedures to be followed in accomplishing the tasks set out above will include:

1. By December 20 of each year all previous permit holders during the current year will receive an application for the next succeeding year's permit.

2. Applications must be received at the District office not later than January 31, to avoid the penalty.

3. Applications will be processed as received by the District, and permits will be mailed.

4. All licenses issued by the District under this regulation will expire on December 31st of the year of issuance.

EFFECTIVE DATE:

This Regulation shall be effective with the 1998 licensing year.

05/21/97

CRAIGHEAD COUNTY REGIONAL SOLID WASTE MANAGEMENT DISTRICT

**Proposed Revisions to Regulation
for Licensing Haulers of Solid Waste**

(Pages 2-4) "LICENSING STANDARDS AND REQUIREMENTS":

Replace Sub-Paragraph (A) with the following:

- (A) Any person who transports solid waste shall:
 - 1. Hold the appropriate drivers license as defined by Arkansas State law.
 - 2. Annually register all waste hauling vehicles with the Craighead County Regional Solid Waste Management District providing:
 - (a) Name, address, and telephone number of vehicle owner
 - (b) Description of each vehicle to be licensed, to include:
 - Make, model and year of vehicle
 - vehicle ID number
 - license plate number
 - (c) Name and type of business involved

Replace Sub-Paragraph (C) with the following:

- (C) Any hauler applying for a license must provide proof of vehicle liability insurance, with minimum coverage as required by State law.

(Page 4) "FEES":

(Replace Paragraph (A) with the following:

- (A) The Craighead County Regional Solid Waste District shall assess the following annual fees for licensing vehicles that haul solid waste within the District:
 - 1. Flat rate of \$25.00 per vehicle, if licensed by January 31.

2. February 1, late penalty will be in effect (double the cost - \$50.00 per vehicle), and only those vehicles properly displaying permits will be allowed to haul solid waste in Craighead County.
3. District personnel will conduct random or specific on-scale or on-floor inspections. Specific inspections occur when apparent unsuitable conditions exist, such as hydraulic oil leaks, material spilling, or sanitation truck seals are not working. Inspection procedures will be employed every working day throughout year. An inspection form will be completed and signed by District employee and driver. If a deficiency is noted, permit will be revoked immediately. A new permit will be issued provided that a second inspection is completed at no charge, within 30 days from the revocation date. If vehicle is not re-inspected within 30 days, it may be re-permitted following successful inspection and payment of an additional \$50.00 per vehicle.

(Page 4) Add the following Sections:

PROCEDURES:

Procedures to be followed in accomplishing the tasks set out above will include:

1. By December 20 of each year all previous permit holders during the current year will receive an application for the next succeeding year's permit.
2. Applications must be received at the District office not later than January 31, to avoid the penalty.
3. Applications will be processed as received by the District, and permits will be mailed.
4. All licenses issued by the District under this regulation will expire on December 31st of the year of issuance.

EFFECTIVE DATE:

This Regulation shall be effective with the 1998
licensing year.

*Superseded
8/20/97*

**Craighead County Regional Solid Waste
Management District**

Program for Licensing Haulers of Solid Waste

PURPOSE:

The Craighead County Solid Waste Management Board is required by Act 752 of 1991 to enact and enforce a licensing program for all haulers who collect or transport solid waste in the Craighead County Regional Solid Waste Management District. The purpose of this licensing program is to better manage and monitor the collection and transportation of solid waste by haulers in the District. It shall be the responsibility of every local government in the District to provide an adequate system of collection and transportation of solid waste within their respective jurisdiction as outlined in these standards. Specifically, each city in the District and Craighead County shall develop and enforce local requirements consistent with this licensing program.

DEFINITIONS:

Person - Any state agency, municipality, governmental subdivision of the state or the United States, public or private corporation, individual, partnership, association or other entity.

Hauler - A person engaged in the collection and/or transportation of solid waste for disposal or storage. Hauler does not include a person transporting his household waste to a permitted facility.

Solid Waste - Any refuse resulting from industrial, commercial, agricultural, and community and residential activities. Waste identified in LICENSING STANDARDS AND REQUIREMENTS, Section (B) 6, shall not be defined as solid waste.

Process Waste - Solid waste resulting from an industrial/manufacturing and/or processing operation.

SCOPE:

(A) A person who engages in the business of hauling solid waste must obtain a license from the Craighead County Regional Solid Waste Management Board if:

1. The person is engaged in the collection of solid waste within the District; or

2. is engaged in the transportation of solid waste for disposal or storage in the District.

(B) A license will only be issued to a person, partnership, corporation, association, the State of Arkansas, a political subdivision of the State, an improvement district, a sanitation authority, or another regional solid waste management district. The District may in the future engage in the hauling of solid waste within its own District without licensure, but will comply with all applicable standards required hereunder.

(C) The local governments in the District and the County government may obtain a special general hauling license for additional vehicles as deemed necessary for special events such as "Clean Sweep" and clean up due to natural disasters such as flooding, tornadoes, etc. Issuance of the special permits, and duration thereof, shall be at the discretion of the Executive Director of the Craighead County Solid Waste Management Board.

LICENSING STANDARDS AND REQUIREMENTS:

These standards shall apply to all commercial haulers having more than one vehicle or a single vehicle with a capacity of more than five (5) cubic yards. For the purpose of this program a license shall not be required for an individual hauling his own household waste to a permitted facility.

(A) Any person who transports solid wastes shall:

1. Hold the appropriate driver's license as defined by Arkansas State Law.

2. Annually register all collection vehicles with the Craighead County Solid Waste Management Board providing:

(a) Name, address, and telephone number of registrant;

(b) Description of each vehicle to be registered including:

- (1) Make, model and year of vehicle
- (2) Vehicle ID number
- (3) License plate number
- (4) Name of vehicle owner

(c) Description of the nature of wastes and size of loads.

(B) All collection and transportation systems shall meet the conditions outlined below. Failure to comply with these conditions may result in a revocation of the hauler's license.

1. Solid waste shall be collected and transported so as to prevent public health hazards, environmental hazards, safety hazards and nuisances.

2. Collection and transportation equipment shall be designed and constructed so as to be as leak-proof as practical. The waste shall be suitably enclosed or covered so as to prevent roadside littering, attraction of vectors or creation of other nuisances.

3. Collection and transportation vehicles shall be kept in a sanitary condition.

4. Regular collection days shall be established as appropriate. Collection shall be performed as necessary.

5. Appliances, furniture and other solid waste which cannot be collected during regularly scheduled pickups shall be collected as frequently as necessary and in accordance with the approved solid waste management system plan for the local government.

6. Collection and transportation of chemicals, poisons, explosives, radiological wastes and other hazardous materials shall be in accordance with the requirements of state and federal regulatory controls. These wastes are specifically prohibited from disposal at the Craighead County Solid Waste Disposal Authority landfill.

7. Collection and transportation of waste tires shall be in accordance with the "waste tire collector requirements" described under Section 15 of the Arkansas Department of Pollution Control and Ecology Waste Tire Program Regulation Number 14, dated June 1992.

(C) Any hauler applying for a license must establish and maintain financial responsibility to the Board. Proof of contractor/vehicle liability insurance with minimum coverage

as required by State law (June, 1992 - \$65,000) will be required to demonstrate adequate financial responsibility. The District shall be named as the Certificate Holder on the proof of insurance provided by the licensee except in the instance the licensee is a governmental entity.

FEES:

(A) The Craighead County Solid Waste Management Board shall assess the following annual fees for licensing the collection and transportation of solid waste (less and except waste tires - see LICENSING STANDARDS AND REQUIREMENTS, Section B 7, above) in the District.

1. By January of each year all current haulers subject to this Program, a minimum license fee of \$50.00 will be assessed for one or two vehicles registered.

2. A licensee with more than two vehicles shall pay an additional \$25.00 per vehicle registered up to a maximum fee of \$1,000.00

3. Upon payment of the fee, each vehicle registered will be provided with a license to collect and transport solid waste (less and except waste tires - see LICENSING STANDARDS AND REQUIREMENTS, Section B 7, above) in the District.

4. If a new hauler is issued a license after January, the fees will be prorated based on the number of full months remaining in the calendar year.

5. Failure to obtain or renew a hauling license by February 1st will result in doubling the fee. Failure to obtain or renew a hauling license before March 1st will result in prohibiting the hauler from collecting and transporting solid waste in Craighead County. New haulers will have thirty (30) days from start-up of collecting or transporting waste in the district to obtain a license without a penalty. Licensed haulers who obtain an additional vehicle will have thirty (30) days from the date obtained to license that vehicle without penalty. After thirty (30) days, the license fee will be doubled and after sixty (60) days the hauler will be prohibited from collecting and transporting solid waste in Craighead County.

(B) No fee will be required for the issuance of the special general hauling license to the County government or local governments in the District for additional vehicles as deemed necessary for purposes contained in SCOPE, Section (C) above.

CRAIGHEAD COUNTY REGIONAL SOLID WASTE MANAGEMENT DISTRICT

REGULATION RESTRICTING OUT OF DISTRICT TRANSFER OF SOLID WASTE


1. Effective July 1st, 1993, and pursuant to Arkansas Code Annotated § 8-6-712, all solid waste generated or collected within the boundaries of this District shall be delivered to any permitted disposal facility located within the District for disposal, treatment or other handling, and shall not be transferred outside the District.

2. This requirement shall not apply to hazardous waste, liquid waste or special materials. The definition of special materials is contained within other policies or regulations of the District and available at the offices of the District.

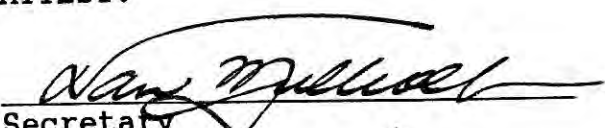
3. Further, this regulation shall not apply to nor impair any legal and proper contract which existed on March 26, 1991, between the producer of solid waste and any independent collecting person, firm or corporation.

4. Failure to comply with this regulation may result in the collector or hauler being subject to the penalties provided by law or the regulations of this District.

ADOPTED the 21st day of April, 1993 following public hearing held April 21, 1993.


Chairman

ATTEST:


Secretary

CRAIGHEAD COUNTY REGIONAL SOLID WASTE MANAGEMENT DISTRICT

REGULATION TO FACILITATE ACCURATE DOCUMENTATION OF ALL MUNICIPAL
SOLID WASTE GENERATED WITHIN THE DISTRICT AND ITS PROPER DISPOSAL

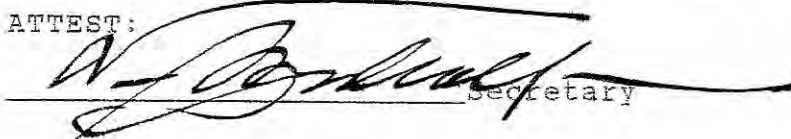
1. Effective January 20, 1999, and pursuant to Arkansas Code Annotated 8-6-704 and Regulation 22, all solid waste collected within the boundaries of this District for disposal shall be required to be weighed at either of the Craighead County Solid Waste Disposal Authority's scales located at the Jonesboro transfer station or at Lake City, or any future CCSWDA facility.
2. This requirement shall not apply to exempt loads, i.e. various recycling efforts which involve direct transport of pre-sorted recyclables to processors, or green waste recycling programs, or hazardous/bio-medical wastes transported by permitted haulers.
3. An administrative and scale fee, payable to CCSWDA, equal to \$8.00 per ton, or a minimum of \$8.00 per load, will be assessed on all non-exempt loads, and included in the regular tipping fee for disposal in permitted landfills within the District.
4. Failure to comply with this regulation, procedurally or financially, may result in the collector or hauler being subject to the penalties provided by law or the regulations of the District, including revocation of waste hauler's license.

ADOPTED the 20th day of JANUARY, 1999 following public hearing held January 20, 1999.



Chairman

ATTEST:


Secretary

CRAIGHEAD COUNTY REGIONAL SOLID WASTE MANAGEMENT DISTRICT

RULES REGARDING
PROCEDURE FOR OBTAINING CERTIFICATE OF NEED
PURSUANT TO THE PROVISION OF
ARKANSAS CODE ANNOTATED § 8-6-706

Adopted April 27, 1999

I. Historical Background

The Craighead County Regional Solid Waste Management District ("CCRSWMD") was created pursuant to the provisions of Ark. Code Ann. § § 8-6-701 et seq. which give CCRSWMD specific authority to issue or deny certificates of need to any petitioner for a solid waste disposal facility within its district.

Act 631 of 1999 amended Ark. Code Ann. §8-6-706 to require a petitioner for a transfer station to obtain a Certificate of Need from the regional solid waste management board where the transfer station is located, and to require notification and approval of the regional solid waste management board in which the solid waste will be delivered.

The CCRSWMD Board has determined that the procedures for obtaining a Certificate of Need should be modified to reflect the new statutory guidelines mandated by Act 631. The applicable rules and procedures are hereafter set forth.

II. Definitions.

Unless otherwise defined herein, the terms used in these rules shall have the meaning accorded to them to Ark. Code Ann. § 8-6-701 et seq. and the rules and regulations promulgated by the Arkansas Department of Environmental Quality.

"Administrator" shall be the Craighead County Regional Solid Waste Management District or any successor agency or entity as determined by the CCRSWMD to carry out the administrative and staff duties for the CCRSWMD.

III. Notice of Intent.

At least thirty (30) days prior to submitting a petition for Certificate of Need, the petitioner must notify the CCRSWMD, in writing, of its intent to submit such a petition. The Notice of Intent shall include the following information.

- (a) the name of the petitioner;
- (b) the petitioner's address and telephone number;
- (c) whether the petitioner is seeking a new or modified (major modification as defined in § 22-308(c) of ADEQ Regulation 22) solid waste landfill or transfer station permit and the classification of the permit sought;
- (d) the site of the proposed facility;

- (e) a description of the area to be served, including population estimates by cities and counties within the area being served;
- (f) confirmation from the Arkansas Department of Environmental Quality that the petitioner has requested a statement concerning: (i) the current and proposed solid waste landfill disposal capacity for the area; and (ii) the landfill class being proposed.

IV. Petition.

A person or entity requesting a Certificate of Need from CCRSWMD must submit a petition to CCRSWMD. All petitions for Certificates of Need shall include, at a minimum, the following information:

- (a) the petitioner's name, address and telephone number;
- (b) the name of the person or entity having legal or equitable title to the land where the proposed facility will be located and documentation of the right to develop such property as a solid waste landfill or transfer station from the legal owner and the equitable owner, where applicable;
- (c) the location of the proposed facility as shown on the applicable 7.5 minute USGS topographic map(s);
- (d) the size of the proposed facility, including, but not limited to the usable airspace above ground level, and the life expectancy of the proposed facility;
- (e) a description of the area to be served, including population estimates by cities and counties within the area being served;
- (f) documentation that the proposed solid waste landfill or transfer station or major modification complies with all of the criteria for evaluation listed in Section 6 below;
- (g) the current permitted capacity for the appropriate landfill class within CCRSWMD and the estimated increase in permitted capacity for the proposed facility or major modification;
- (h) confirmation that the proposed facility is in compliance with all existing comprehensive land use plans of any local government entity;
- (i) documentation of compliance with any and all statutory and regulatory guidelines applicable to solid waste management facilities;

- (j) any other information deemed necessary by CCRSWMD to make a determination of need; and
- (k) if applicable, notification to and approval from the regional solid waste management board in the State of Arkansas which is receiving the solid waste for the CCRSWMD in accordance with Arkansas Code Annotated § 8-6-706(b)(2)(G).

V. Completeness Determination.

Upon receipt of the initial petition, CCRSWMD will make a completeness determination of the petition within a period not to exceed one hundred eighty (180) days. Any additional information that CCRSWMD determines necessary to make a decision on the need of the proposed facility will be submitted to the petitioner within this time frame. In such instance, CCRSWMD will again make a completeness determination within a period not to exceed one hundred eighty (180) days of the receipt of the additional information.

VI. Review Period.

Once CCRSWMD has determined that a petition for a Certificate of Need is complete, it will so notify the petitioner and publish notice of the review period once a week for two (2) consecutive weeks in a newspaper of general circulation in the area of the proposed facility. The review period will begin on the date of the first publication of notice of the review period. The review period will run for (60) days. During the review period, public comment will be received on the petition for the Certificate of Need.

VII. Public Hearing.

During the sixty (60) day review period, CCRSWMD will conduct a public hearing within the county where the proposed facility or major modification is to be located.

VIII. Criteria for Review.

When reviewing a petition for a Certificate of Need, CCRSWMD shall consider, and evaluate the following criteria:

- (a) whether the proposed facility is consistent with the regional planning strategy adopted by CCRSWMD in its regional needs assessment or regional solid waste management plan;
- (b) a review of any needs assessment that has been prepared for the proposed facility;

- (c) whether the proposed facility conflicts with existing comprehensive land use plans of any local governmental entity;
- (d) whether the proposed facility disturbs an archeological site as recognized by the Arkansas Archaeological Survey, or a rare and endangered species or habitat as recognized by either the Arkansas Game and Fish Commission or the United States Fish and Wildlife Service or any other similar federal, state or local agency;
- (e) whether the proposed facility will adversely affect the public use of any local, state or federal facility, including, but not limited to, parks and wildlife management areas;
- (f) whether the proposed facility conflicts with the requirements of state or federal laws and regulations on the location of disposal facilities;
- (g) if the proposed facility is located within the 100-year floodplain, whether it restricts the flow of the 100-year flood, reduces the temporary water storage capacity of the floodplain, or could result in washout of solid waste which could pose a hazard to human health or the environment;
- (h) whether the proposed facility is appropriately located given the needs of CCRSWMD, including a review of the road system serving such area;
- (i) whether the proposed facility provides landfill disposal capacity needed within the CCRSWMD;
- (j) the detailed history of the applicant's record and that of the stockholders and officers with respect to violations of environmental laws and regulations of the United States or any state or political subdivision of any state;
- (k) the area to be served by the proposed facility; and
- (l) whether the petitioner has complied with the rules for obtaining a Certificate of Need.

IX. Determination.

Within sixty (60) days following the close of the review period, CCRSWMD will act upon the petition for a Certificate of Need at a CCRSWMD meeting. The Administrator for CCRSWMD shall present a recommendation to the CCRSWMD Board. Those supporting the issuance of the Certificate of Need and those opposing the issuance of the Certificate of Need will be provided a reasonable time period to make a presentation to CCRSWMD Board and address the Administrator's recommendation.

In the event CCRSWMD has neither issued nor denied a petition for Certificate of Need within one hundred eighty (180) days of the beginning of the review period, the petition will be deemed to have been denied. CCRSWMD shall issue written findings when making a determination on the petition for the Certificate of Need and shall set forth the basis for issuing or denying the petition. The findings will be sent to the following:

- (1) the petitioner;
- (2) Arkansas Department of Environmental Quality; and
- (3) any interested party who requests such findings in writing from the CCRSWMD.

X. Appeal of Decision.

The petitioner or any interested party to a Certificate of Need determination, as defined in Ark. Code Ann. § 8-6-706(c), shall have the right to appeal the issuance or denial of a petition for a Certificate of Need in accordance with the provisions of Ark. Code Ann. § 8-6-706(c) and applicable rules and regulations.

XI. Obligations.

A petitioner shall have sixty (60) days from the issuance of a Certificate of Need in which to file a pre-application for a solid waste landfill or transfer station permit with Arkansas Department of Environmental Quality. If a pre-application is not filed within this sixty (60) day period, the Certificate of Need shall expire.

Upon approval of a pre-application for a solid waste landfill or transfer station permit, a petitioner shall have three (3) months from such approval in which to file an application with the Arkansas Department of Environmental Quality in accordance with § 22.303 of ADEQ Regulation 22. If an application is not filed within this three (3) month period, the Certificate of Need shall expire.

A Certificate of Need shall be issued to a specific person or entity. Under no conditions or circumstances shall a Certificate of Need be assigned or otherwise transferred to any other person or entity else the Certificate of Need shall become immediately null and void.

APPENDIX C

INDUSTRIAL WASTE GENERATORS

pPrepF	nar	ReplName	Title	RepCompany	AddrLine1	AddrLine2	City	State	Zip	Phone	Fax	Email
Mr. Edward	South		Owner	Ace Tool & Manufacturing	1011 Cotton Belt		Jonesboro	AR	72401	972-0480	933-9495	
Mr. Greg	May		Plant Manager	Acme Brick Company	2905 Dan Ave.	PO Box 250	Jonesboro	AR	72403-0250	935-5182	935-9162	gmay@acmebrick.com
Mr. James	Darnell		President	Air-Tite, Inc.	3108 Parker Annex Drive	PO Box 1227	Jonesboro	AR	72403-1227	935-8483	932-5219	airtite@airtitearkansas.com
Mr. Jimmy	Alexander		Owner	Alexander's Machine Shop	1201 E. Johnson Ave.	P.O. Box 1925	Jonesboro	AR	72403-1925	935-6405	972-9169	amy-alex@suddenlinkmail.com
Mr. Tony	Rampley		President	Arkansas Glass Container	516 W. Johnson Ave.	PO Drawer 1717	Jonesboro	AR	72403-1717	932-4564	268-6217	tonyr@gccc.com
Mr. Kevin	Simpkins		General Manager	Arkansas Trailer Manufacturing Co., Inc.		8421 C.W. Post Road	Jonesboro	AR	72401	935-6366	935-6416	ksimpkins@arkansastrailer.com
Ms. Stacy	Gestring		President	Art Advertising, Inc.		2300 W. Washington Ave	Jonesboro	AR	72401	925-4042	935-2477	stacyg@artadvertising.com
Mr. Jim	Fulkerson		President	Atlas Asphalt, Inc.	1333 Airport Rd.	P.O. Box 2500	Jonesboro	AR	72402-2500	932-1246	935-6687	julkerson@atlas-asphalt.com
Mr. J.R.	McCullars		VP Operations	BAMA Corporation		5904 Krueger Drive	Jonesboro	AR	72401	935-2639	935-9319	ronm@bamacorporation.com
Ms. Glenda	Fowler		Customer Service Rep	Bank & Business Solutions			Jonesboro	AR	72402-2577	935-6410	935-0387	glenda.fowler@brbsinc.com
Mr. Scott	Bridger		General Manager	Best Conveyors	1208 Falls St.		Jonesboro	AR	72401	935-0970	935-3661	sbridger@bestconveyors.com
Mr. James	Best		President	Best Manufacturing, Inc.	204 Best Industrial Drive	P.O. Box 6022	Jonesboro	AR	72403-6022	931-9533	931-9664	james@bestmanufacturinginc.com
Mr. Bruce	Broadaway		President	Broadaway Ham Company	500 N. Culberhouse	PO Box 938	Jonesboro	AR	72403-0938	932-6688	932-6683	ham-man@sbcglobal.net
Mr. John	Hegger		General Manager	Busch Agricultural Resources, Inc.		3723 CR 905	Jonesboro	AR	72401-0749	932-5484	932-4528	john.hegger@antheuser-busch.com
Ms. Donna	Carter		Human Resource Manager	Butterball LLC		9401 E. Highland Dr.	Jonesboro	AR	72401-9157	933-0001	933-0005	dcarter@butterball.com
Ms. Sandy	Burks		Human Resource Manager	Camfil Farr APC		3505 Airport Rd.	Jonesboro	AR	72401-4480	933-8048	9330-8381	hogans@farrapc.com
Mr. Austin	Barr III		Owner	Century Cabinets & Millwork	3102 Fox Road	PO Box 2086	Jonesboro	AR	72402-2086	972-0511	972-0511	
Mr. Kevin	Osborn		Director of Operations	Colson Caster Corporation		3700 Airport Road	Jonesboro	AR	72401	932-4501	932-1446	kosborn@colsoncaster.com
Mr. Jerry	Mitchell		General Manager	Colson Monette		505 N. Edmond Street	Monette	AR	72447	486-5469	486-2155	jmitchell@colsonmonette.com
Mr. Wes	Johnson		President	Continental Computer Corp.	3615 Stadium Blvd.	P.O. Box 998	Jonesboro	AR	72404	932-0081	932-1273	wjohnson@continentalcomputers.com
Mr. Royal E.	Fletcher			Continental Directory Co., Inc.	2200 Alexander Dr.		Jonesboro	AR	72403-0998	933-2072	933-9722	
Ms. Mike	Ridge		Plant Manager	Crane Composites		8500 CW Post Rd.	Jonesboro	AR	72401-9645	933-5300	933-5396	mridge@cranecomposites.com
Mr. Michael f	Guerriero		President	CUSI	300 S. Church St., Ste. 200	P.O. Box 1515	Jonesboro	AR	72403-1515	336-2200	336-2234	mguerriero@cusi.com
Mr. Rick	Hathcoat		Owner	Deb's Cabinet Shop		294 CR763	Brookland	AR	72417	935-0193		
Mr. Jeff	Baron		Director of Operations	Delta Consolidated Industries	4800 Krueger Dr.		Jonesboro	AR	72403-1846	935-3711	935-7073	jeff.baron@apextoolgroup.com
Mr. Anthony	Ditta		Vice President	Ditta Door & Hardware, Inc.	3620 Stadium Blvd.	PO Box 2285	Jonesboro	AR	72402-2285	972-0200	935-0504	sholmes@dittainc.com
Mr. John Pau	Thompson		General Manager	Doric of Northeast Arkansas	5400 S. Caraway Road	PO Box 17154	Jonesboro	AR	72403-7154	972-0430	972-6268	doricnea@aol.com
Mr. Kim	Edens		President	Elite Graphics		1204 Falls St.	Jonesboro	AR	72401-5460	935-5364	935-2519	kim@elitepp.com
Ms. Linda	Wofford		President & General Manager	Engines, Inc.		5400 C.W. Post Road	Jonesboro	AR	72401	268-3700	268-3750	linda@enginespower.com
Mr. Jake	Morse		President	Fasweet, Div. of Morse Co. Inc.	215 N. Culberhouse St.	P.O. Drawer 5000	Jonesboro	AR	72403-5000	932-1562	932-1114	jake@morsecompany.com
Ms. Amanda	Pollard		Manager	Fedex Kinko's	2205 E. Nettleton Ave		Jonesboro	AR	72401	935-8690	931-0520	usa4801@fedexlinkos.com
Mr. Barry	Forrest		President	Forrest Office Machines		1005 S. Gee St.	Jonesboro	AR	72401-3838	932-7852	932-0909	bwforrest@sbcglobal.net
Mr. Boyce	Sherill		Technical Manager	Frito-Lay, Inc.	2810 Quality Way		Jonesboro	AR	72401-9170	910-3400	910-3495	boyce.sherill@frito-lay.com
Mr. Larry	Chipman		Plant Manager	Great Dane Trailers	2800 Great Dane Dr.		Jonesboro	AR	72401-9144	931-4529	972-9843	chipman@greatdanetrailers.com
Mr. Leon	Hedger		President	Hedger Brothers Concrete		100 S. Patrick St.	Jonesboro	AR	72401-3052	932-4881	932-0566	hedgerbrothers@earthlink.net
Mr. Samuel f	Rosse		Plant Manager	Home Ice Company		700 Cate Street	Jonesboro	AR	72401	935-5555	935-6588	

Mr. Gregg	Goodner	President	Hytrol Conveyor Co.	2020 Hytrol Dr.	Jonesboro AR	72401-6712	935-3700	935-0847	ggoodner@hytrol.com
Ms. Julia	Thyer	Vice President	Ingels, Inc.	104 Best Industrial Dr.	Jonesboro AR	P.O. Box 600	72403-0600	931-3903	ingels@ritternet.com
Mr. Terry	Mays	Plant Manager	J K Products & Services, Inc.	1 Walter Kratz Dr.	Jonesboro AR	72401-0609	935-1130	935-3618	terry.mays@us.jk-group.net
Mr. Joel	Esau	Owner	Jiffy Printing Center	PO Box 1911	Jonesboro AR	72403-1911	933-0500	933-2011	jiffyprintcenter@sbcglobal.net
Mr. Don	Harmon	President	Jimco Lighting Factory Outlet Stores	1207 Flint Street	Bono AR	P.O. Box 490	72416-0490	935-6820	jimco@jimcolamp.com
Mr. Simon	Storer	General Manager	JMS Russel Metals Corporation	2801 Commerce Dr.	Jonesboro AR	P.O. Box 19248	72402-9248	972-5802	ssstorer@jmsmetal.com
Mr. Larry	Brimhall	Partner	Jonesboro Manufacturing Company	4900 Krueger Drive	Jonesboro AR	PO Box 2608	72402-2608	972-0190	lanrb@jonesboromfg.com
Mr. Rob	Yates	President & CEO	Jonesboro Prosthetic & Orthotic Lab	820 Professional Acres Dr.	Jonesboro AR	P.O. Box 9303	72403-9303	932-6436	rob.yates@jpo-popaa.com
Mr. David	Mosesso	Publisher	Jonesboro Sun	518 Carson St.	Jonesboro AR	P.O. Box 1249	72403-1249	935-5525	dmosesso@jonesborosun.com
Mr. Shannon	Lenderman	President	Jonesboro Tool & Die Co., Inc.	2620 Commerce Dr.	Jonesboro AR	PO Box 2496	72402-2496	935-9922	jdwire@bscn.com
Mr. Walter	Kroeter	President	Kroeter, Inc.	5801 Krueger Drive	Jonesboro AR	5801 Krueger Drive	72401 972-9695	802-2442	dkroeter@suddenlinkmail.com
Ms. Holly	Acebo	VP Operations	LensMasters	320 S. Church St.	Jonesboro AR		72403-0748	972-1818	acebo@lensmasters.com
Mr. Robert	Jones	Manager	Majestic Car Fragrance		Jonesboro AR	5301 Stadium Blvd.	72401 935-1669	972-0356	magicmist@suddenlinkmail.com
Mr. Jeff	Koontz	President	Majestic Metals	110 Walnut Street	Jonesboro AR	PO Box 993	72403-0993	935-5948	majestic@mynewroads.com
Mr. Jon	Wilbanks	President	Master Print Group	5115 E. Highland Drive	Jonesboro AR	PO Box 16417	72403 932-4491	935-8080	jon.wilbanks@masterprintgroup.com
Mr. John W.	Craft	President	Mid-America Mfg. Corp.	3907 Harrisburg Rd.	Jonesboro AR	P.O. Box 2278	72402-2278	972-8030	jcrafft@maculvert.com
Mr. Doyle	Hudson	Designer	MidSouth Tackle		Jonesboro AR	128 CR 108	72404 935-4914	935-4914	tackle@bscn.com
Mr. Eric	Walden	General Manager	Millard Refrigerated Services		Jonesboro AR	2407 Great Dane Drive	72401 934-8000	934-8558	info@neatpressworks.com
Ms. Ellen	Wisdom	Owner	N.E.A.T. Pressworks	5408 Vance Dr.	Jonesboro AR	PO Box 2021	72402-2021	932-5869	bnelson@nelsonprinting.com
Mr. Bob	Nelson	President	Nelson Printing & Label Co.		Jonesboro AR	2602 E. Matthews Ave.	72401-4420	932-9770	beverly.mcquay@us.nestle.com
Mr. Dan	Braswell	Plant Manager	Nestle' Prepared Foods Company	One Nestle' Way	Jonesboro AR		72401-9226	268-4810	dwinthers@nettelions.com
Mr. Dwayne	Winters	President	Nettleton Concrete, Inc.	2318 Moore Road	Jonesboro AR	P.O. Box 2157	72402-2157	932-4400	sjayne@newcorp.com
Ms. Stephani	Jayne	Recruiter	NEW Customer Service Companies, Inc.	22894 Pacific Blvd.	Sterling VA		20166 406-750-9960		
Ms. Kerry	Roemer	Human Resource Manager	Nice-Pak Products, Inc.	1 Nice-Pak Road	Jonesboro AR		72404 935-6423	934-0086	
Ms. Barbara	Smith	Human Resource Manager	Nordex USA	3100 Nordex Drive	Jonesboro AR		72401 934-0482	934-0693	
Mr. David	Sluder	CEO	Optus, Inc.	3423 One Place	Jonesboro AR	P.O. Box 2503	72402-2503	974-7777	david.sluder@optusinc.com
Ms. Lisa	Harrell	Owner	Pasmore Printing & Fast Copy	2900 E. Matthews	Jonesboro AR		72401 932-6529	931-6529	lisa@pasmoreprinting.com
Mr. Greg	Riekhof	Plant Manager	Post Foods LLC	5800 C.W. Post Road	Jonesboro AR		72401 933-4100	933-4190	greg.riekhof@postfoods.com
Mr. Troy	Coleman	President	Pride of Dixie Syrup Company	PO Box 1117	Jonesboro AR		72403-1117	935-2252	bestpetro@fhtm.us
Mr. Mike	DeHart	Plant Manager	Quad/Graphics	4708 Krueger Dr.	Jonesboro AR		72401-6714	935-7000	mike.dehart@qg.com
Mr. Jon	DePriest	President	Quality Precast Corporation	310 Reeves Street	Jonesboro AR	PO Box 1556	72403-1556	972-9977	jord@qualityprecast-arkansas.com
Mr. Mike	Gray	Division Manager	Riceland Foods	216 N. Gee St.	Jonesboro AR		72401-1905	932-7433	mgray@riceland.com
Mr. Robert	Jones	Owner	Robert Jones Machine Shop	5301 Stadium Blvd.	Jonesboro AR		72401 935-1669	935-6683	magicmist@suddenlinkmail.com
Mr. Wayne	Robertson	President	Robertson Manufacturing & Engineering	3209 Springwood	Jonesboro AR		72401 933-0148	933-0147	filtermate@filtermate.com
Mr. Jim	Scurlock	President	Scurlock Industries of Jonesboro, Inc.	800 W. Johnson Ave.	Jonesboro AR	P.O. Box 1500	72403-1500	935-5913	jim@s-ind.com
Mr. Bill	Gatlin	President	Sign Systems, Inc.	300 Burke Ave.	Jonesboro AR	P.O. Box 6064	72403-6064	931-1761	bgatlin@signsystems1.com
Mr. Doug	Imrie	President	Southern Cast Products, Inc.	5701 Krueger Dr.	Jonesboro AR		72401-6817	972-1260	imrie@southerncast.com

Mr. Lindell	Pratt	President	Southern Tool & Die	2601 Commerce Drive	2802 Commerce Dr.	Jonesboro AR	72401-9168 932-2350	932-4720	sales@spiritfitness.com
Mr. Chris	Cox	President	Spirit Fitness Products		PO Box 2037	Jonesboro AR	72402-2037 935-1107	935-7611	beth.wieler@startek.com
Ms. Beth	Wieler	Site Director	StarTek		2908 S. Caraway Rd.	Jonesboro AR	72401 934-4300	934-0385	russell.skinner@tnb.com
Mr. Russell	Skinner	Plant Manager	Thomas & Betts		5601 E. Highland Dr.	Jonesboro AR	72401-6810 935-2559	935-8326	arauth@trq.net
Mr. Adam	Rauth	Manager	TRG Jonesboro, LLC	105 S. Flint St.	P.O. Box 1580	Jonesboro AR	72403-1580 932-8361	935-4044	dfalls@trinitylighting.com
Mr. Doug	Falls	President	Trinity Lighting	2902 Quality Way	PO Box 2498	Jonesboro AR	72402-2498 972-1177	972-6381	angela.waters@unilever.com
Ms. Rosemar	Miller	President	Tri-State Window & Door Mfg.		5621 E. Nettleton Ave.	Jonesboro AR	72404-9673 935-7333	935-7336	
Ms. Angie	Waters	Administrative Assistant	Unilever	2407 Quality Way		Jonesboro AR	72401 910-1100	910-1147	
Mr. Randy	Britton	General Manager	Westside Optical, Inc.	35 CR347	PO Box 157	Bono AR	72416-0157 972-0759	972-6023	
Mr. Rich	Haral	President	Windchimes by Russco III	6140 Southwest Drive		Jonesboro AR	72403-0353 932-5509	933-8741	rich@myrusscogarden.com

pPrepF	nar	ReplName	Title	RepCompany	AddrLine1	AddrLine2	City	State	Zip	Phone	Fax	Email
Mr.	Edward	South	Owner	Ace Tool & Manufacturing	1011 Cotton Belt		Jonesboro	AR	72401	972-0480	933-9495	
Mr.	Greg	May	Plant Manager	Acme Brick Company	2905 Dan Ave.	PO Box 250	Jonesboro	AR	72403-0250	935-5182	935-9162	gmay@acmebrick.com
Mr.	James	Darnell	President	Air-Tite, Inc.	3108 Parker Annex Drive	PO Box 1227	Jonesboro	AR	72403-1227	935-8483	932-5219	airtite@airtitearkansas.com
Mr.	Jimmy	Alexander	Owner	Alexander's Machine Shop	1201 E. Johnson Ave.	P.O. Box 1925	Jonesboro	AR	72403-1925	935-6405	972-9169	amy-alex@suddenlinkmail.com
Mr.	Tony	Rampley	President	Arkansas Glass Container	516 W. Johnson Ave.	PO Drawer 1717	Jonesboro	AR	72403-1717	932-4564	268-6217	tonyr@gccc.com
Mr.	Kevin	Simpkins	General Manager	Arkansas Trailer Manufacturing Co., Inc.		8421 C.W. Post Road	Jonesboro	AR	72401	935-6366	935-6416	ksimpkins@arkansastrailer.com
Ms.	Stacy	Gestring	President	Art Advertising, Inc.		2300 W. Washington Ave	Jonesboro	AR	72401	925-4042	935-2477	stacyg@artadvertising.com
Mr.	Jim	Fulkerson	President	Atlas Asphalt, Inc.	1333 Airport Rd.	P.O. Box 2500	Jonesboro	AR	72402-2500	932-1246	935-6687	julkerson@atlas-asphalt.com
Mr.	J.R.	McCullars	VP Operations	BAMA Corporation		5904 Krueger Drive	Jonesboro	AR	72401	935-2639	935-9319	ronm@bamacorporation.com
Ms.	Glenda	Fowler	Customer Service Rep	Bank & Business Solutions	1208 Falls St.		Jonesboro	AR	72402-2577	935-6410	935-0387	glenda.fowler@brbsinc.com
Mr.	Scott	Bridger	General Manager	Best Conveyors	107 Flint Street		Jonesboro	AR	72401	935-0970	935-3661	sbridger@bestconveyors.com
Mr.	James	Best	President	Best Manufacturing, Inc.	204 Best Industrial Drive	P.O. Box 6022	Jonesboro	AR	72403-6022	931-9533	931-9664	james@bestmanufacturinginc.com
Mr.	Bruce	Broadaway	President	Broadaway Ham Company	500 N. Culberhouse	PO Box 938	Jonesboro	AR	72403-0938	932-6688	932-6683	ham-man@sbcglobal.net
Mr.	John	Hegger	General Manager	Busch Agricultural Resources, Inc.		3723 CR 905	Jonesboro	AR	72401-0749	932-5484	932-4528	john.hegger@antheuser-busch.com
Ms.	Donna	Carter	Human Resource Manager	Butterball LLC		9401 E. Highland Dr.	Jonesboro	AR	72401-9157	933-0001	933-0005	dcarter@butterball.com
Ms.	Sandy	Burks	Human Resource Manager	Camfil Farr APC		3505 Airport Rd.	Jonesboro	AR	72401-4480	933-8048	9330-8381	hogans@farrapc.com
Mr.	Austin	Barr III	Owner	Century Cabinets & Millwork	3102 Fox Road	PO Box 2086	Jonesboro	AR	72402-2086	972-0511	972-0511	
Mr.	Kevin	Osborn	Director of Operations	Colson Caster Corporation		3700 Airport Road	Jonesboro	AR	72401	932-4501	932-1446	kosborn@colsoncaster.com
Mr.	Jerry	Mitchell	General Manager	Colson Monette		505 N. Edmond Street	Monette	AR	72447	486-5469	486-2155	jmitchell@colsonmonette.com
Mr.	Wes	Johnson	President	Continental Computer Corp.	3615 Stadium Blvd.	P.O. Box 998	Jonesboro	AR	72404	932-0081	932-1273	wjohnson@continentalcomputers.com
Mr.	Royal E.	Fletcher		Continental Directory Co., Inc.	2200 Alexander Dr.		Jonesboro	AR	72403-0998	933-2072	933-9722	
Ms.	Mike	Ridge	Plant Manager	Crane Composites		8500 CW Post Rd.	Jonesboro	AR	72401-9645	933-5300	933-5396	mridge@cranecomposites.com
Mr.	Michael f	Guerriero	President	CUSI	300 S. Church St., Ste. 200	P.O. Box 1515	Jonesboro	AR	72403-1515	336-2200	336-2234	mguerriero@cusi.com
Mr.	Rick	Hathcoat	Owner	Deb's Cabinet Shop		294 CR763	Brookland	AR	72417	935-0193		
Mr.	Jeff	Barron	Director of Operations	Delta Consolidated Industries	4800 Krueger Dr.		Jonesboro	AR	72403-1846	935-3711	935-7073	jeff.barron@apextoolgroup.com
Mr.	Anthony	Ditta	Vice President	Ditta Door & Hardware, Inc.	3620 Stadium Blvd.	PO Box 2285	Jonesboro	AR	72402-2285	972-0200	935-0504	sholmes@dittainc.com
Mr.	John Pau	Thompson	General Manager	Doric of Northeast Arkansas	5400 S. Caraway Road	PO Box 17154	Jonesboro	AR	72403-7154	972-0430	972-6268	doricnea@aol.com
Mr.	Kim	Edens	President	Elite Graphics		1204 Falls St.	Jonesboro	AR	72401-5460	935-5364	935-2519	kim@elitepp.com
Ms.	Linda	Wofford	President & General Manager	Engines, Inc.		5400 C.W. Post Road	Jonesboro	AR	72401	268-3700	268-3750	linda@enginespower.com
Mr.	Jake	Morse	President	Fasweet, Div. of Morse Co. Inc.	215 N. Culberhouse St.	P.O. Drawer 5000	Jonesboro	AR	72403-5000	932-1562	932-1114	jake@morsecompany.com
Ms.	Amanda	Pollard	Manager	Fedex Kinko's	2205 E. Nettleton Ave		Jonesboro	AR	72401	935-8690	931-0520	usa4801@fedexlinkos.com
Mr.	Barry	Forrest	President	Forrest Office Machines		1005 S. Gee St.	Jonesboro	AR	72401-3838	932-7852	932-0909	bwforrest@sbcglobal.net
Mr.	Boyce	Sherill	Technical Manager	Frito-Lay, Inc.	2810 Quality Way		Jonesboro	AR	72401-9170	910-3400	910-3495	boyce.sherill@frito-lay.com
Mr.	Larry	Chipman	Plant Manager	Great Dane Trailers	2800 Great Dane Dr.		Jonesboro	AR	72401-9144	931-4529	972-9843	ichipman@greatdanetrailers.com
Mr.	Leon	Hedger	President	Hedger Brothers Concrete		100 S. Patrick St.	Jonesboro	AR	72401-3052	932-4881	932-0566	hedgerbrothers@earthlink.net
Mr.	Samuel f	Rosse	Plant Manager	Home Ice Company		700 Cate Street	Jonesboro	AR	72401	935-5555	935-6588	

Mr. Gregg	Goodner	President	Hytrol Conveyor Co.	2020 Hytrol Dr.	Jonesboro AR	72401-6712	935-3700	935-0847	ggoodner@hytrol.com
Ms. Julia	Thyer	Vice President	Ingels, Inc.	104 Best Industrial Dr.	Jonesboro AR	P.O. Box 600	72403-0600	931-3903	ingels@ritternet.com
Mr. Terry	Mays	Plant Manager	J K Products & Services, Inc.	1 Walter Kratz Dr.	Jonesboro AR	Jonesboro AR	72401-0609	935-1130	terry.mays@us.jk-group.net
Mr. Joel	Esau	Owner	Jiffy Printing Center	PO Box 1911	Jonesboro AR	Jonesboro AR	72403-1911	933-0500	jiffyprintcenter@sbcglobal.net
Mr. Don	Harmon	President	Jimco Lighting Factory Outlet Stores	1207 Flint Street	Bono AR	P.O. Box 490	72416-0490	935-6820	jimco@jimcolamp.com
Mr. Simon	Storer	General Manager	JMS Russel Metals Corporation	11759 Hwy. 63 North	Jonesboro AR	P.O. Box 13248	72402-9248	972-5802	ssstorer@jmsmetal.com
Mr. Larry	Brimhall	Partner	Jonesboro Manufacturing Company	4900 Krueger Drive	Jonesboro AR	PO Box 2608	72402-2608	972-0190	larryb@jonesboromfg.com
Mr. Rob	Yates	President & CEO	Jonesboro Prosthetic & Orthotic Lab	820 Professional Acres Dr.	Jonesboro AR	P.O. Box 9303	72403-9303	932-6436	rob.yates@jpo-popaa.com
Mr. David	Mosesso	Publisher	Jonesboro Sun	518 Carson St.	Jonesboro AR	P.O. Box 1249	72403-1249	935-5525	dmosesso@jonesborosun.com
Mr. Shannon	Lenderman	President	Jonesboro Tool & Die Co., Inc.	2620 Commerce Dr.	Jonesboro AR	PO Box 2496	72402-2496	935-9922	jdwire@bscn.com
Mr. Walter	Kroeter	President	Kroeter, Inc.	5801 Krueger Drive	Jonesboro AR	Jonesboro AR	72401 972-9695	802-2442	dkroeter@suddenlinkmail.com
Ms. Holly	Acebo	VP Operations	LensMasters	320 S. Church St.	Jonesboro AR	Jonesboro AR	72403-0748	972-1818	acebo@lensmasters.com
Mr. Robert	Jones	Manager	Majestic Car Fragrance	5301 Stadium Blvd.	Jonesboro AR	Jonesboro AR	72401 935-1669	972-0356	magicmist@suddenlinkmail.com
Mr. Jeff	Koontz	President	Majestic Metals	110 Walnut Street	Jonesboro AR	PO Box 993	72403-0993	935-5948	majestic@mynewroads.com
Mr. Jon	Wilbanks	President	Master Print Group	5115 E. Highland Drive	Jonesboro AR	PO Box 16417	72403-16417	932-8080	jon.wilbanks@masterprintgroup.com
Mr. John W.	Craft	President	Mid-America Mfg. Corp.	3907 Harrisburg Rd.	Jonesboro AR	P.O. Box 2278	72402-2278	972-8030	jcrafft@maculvert.com
Mr. Doyle	Hudson	Designer	MidSouth Tackle	128 CR 108	Jonesboro AR	Jonesboro AR	72404 935-4914	935-4914	tackle@bscn.com
Mr. Eric	Walden	General Manager	Millard Refrigerated Services	2407 Great Dane Drive	Jonesboro AR	Jonesboro AR	72401 934-8000	934-8558	info@neatpressworks.com
Ms. Ellen	Wisdom	Owner	N.E.A.T. Pressworks	5408 Vance Dr.	Jonesboro AR	PO Box 2021	72402-2021	932-5869	bnelson@nelsonprinting.com
Mr. Bob	Nelson	President	Nelson Printing & Label Co.	2602 E. Matthews Ave.	Jonesboro AR	Jonesboro AR	72401-4420	932-9770	beverly.mcquay@us.nestle.com
Mr. Dan	Braswell	Plant Manager	Nestle' Prepared Foods Company	One Nestle' Way	Jonesboro AR	Jonesboro AR	72401-9226	268-4810	dwinners@nettelions.com
Mr. Dwayne	Winters	President	Nettleton Concrete, Inc.	P.O. Box 2157	Jonesboro AR	Jonesboro AR	72402-2157	932-4400	sjayne@newcorp.com
Ms. Stephani	Jayne	Recruiter	NEW Customer Service Companies, Inc.	2318 Moore Road	Sterling VA	20166 406-750-9960			
Ms. Kerry	Roemer	Human Resource Manager	Nice-Pak Products, Inc.	22894 Pacific Blvd.	Jonesboro AR	Jonesboro AR	72404 935-6423	934-0086	
Ms. Barbara	Smith	Human Resource Manager	Nordex USA	1 Nice-Pak Road	Jonesboro AR	Jonesboro AR	72401 934-0482	934-0693	
Mr. David	Sluder	CEO	Optus, Inc.	3100 Nordex Drive	Jonesboro AR	P.O. Box 2503	72402-2503	974-7777	david.sluder@optusinc.com
Ms. Lisa	Harrell	Owner	Pasmore Printing & Fast Copy	3423 One Place	Jonesboro AR	Jonesboro AR	72401 932-6529	931-6529	lisa@pasmoreprinting.com
Mr. Greg	Riekhof	Plant Manager	Post Foods LLC	2900 E. Matthews	Jonesboro AR	Jonesboro AR	72401 933-4100	933-4190	greg.riekhof@postfoods.com
Mr. Troy	Coleman	President	Pride of Dixie Syrup Company	5800 C.W. Post Road	Jonesboro AR	Jonesboro AR	72403-1117	935-2252	bestpetro@fhtm.us
Mr. Mike	DeHart	Plant Manager	Quad/Graphics	PO Box 1117	Jonesboro AR	Jonesboro AR	72401-6714	935-7000	mike.dehart@qg.com
Mr. Jon	DePriest	President	Quality Precast Corporation	4708 Krueger Dr.	Jonesboro AR	Jonesboro AR	72403-1556	972-9977	jord@qualityprecast-arkansas.com
Mr. Mike	Gray	Division Manager	Riceland Foods	PO Box 1556	Jonesboro AR	Jonesboro AR	72401-1905	932-7433	mgray@riceland.com
Mr. Robert	Jones	Owner	Robert Jones Machine Shop	216 N. Gee St.	Jonesboro AR	Jonesboro AR	72401 935-1669	935-6683	magicmist@suddenlinkmail.com
Mr. Wayne	Robertson	President	Robertson Manufacturing & Engineering	5301 Stadium Blvd.	Jonesboro AR	Jonesboro AR	72401 933-0148	933-0147	filtermate@filtermate.com
Mr. Jim	Scurlock	President	Scurlock Industries of Jonesboro, Inc.	3209 Springwood	Jonesboro AR	Jonesboro AR	72403-1500	935-5913	jim@s-ind.com
Mr. Bill	Gatlin	President	Sign Systems, Inc.	P.O. Box 1500	Jonesboro AR	Jonesboro AR	72403-6064	931-1761	bgatlin@signsystems1.com
Mr. Doug	Imrie	President	Southern Cast Products, Inc.	P.O. Box 6064	Jonesboro AR	Jonesboro AR	72401-6817	972-1260	imrie@southerncast.com

Mr. Lindell	Pratt	President	Southern Tool & Die	2601 Commerce Drive	2802 Commerce Dr.	Jonesboro AR	72401-9158 932-2350	932-4720	sales@spiritfitness.com
Mr. Chris	Cox	President	Spirit Fitness Products		PO Box 2037	Jonesboro AR	72402-2037 935-1107	935-7611	beth.wieler@startek.com
Ms. Beth	Wieler	Site Director	StarTek		2908 S. Caraway Rd.	Jonesboro AR	72401 934-4300	934-0385	russell.skinner@tnb.com
Mr. Russell	Skinner	Plant Manager	Thomas & Betts		5601 E. Highland Dr.	Jonesboro AR	72401-6810 935-2559	935-8326	arauth@trq.net
Mr. Adam	Rauth	Manager	TRG Jonesboro, LLC	105 S. Flint St.	P.O. Box 1580	Jonesboro AR	72403-1580 932-8361	935-4044	dfalls@trinitylighting.com
Mr. Doug	Falls	President	Trinity Lighting	2902 Quality Way	PO Box 2498	Jonesboro AR	72402-2498 972-1177	972-6381	
Ms. Rosemar	Miller	President	Tri-State Window & Door Mfg.		5621 E. Nettleton Ave.	Jonesboro AR	72404-9673 935-7333	935-7336	
Ms. Angie	Waters	Administrative Assistant	Unilever	2407 Quality Way		Jonesboro AR	72401 910-1100	910-1147	angela.waters@unilever.com
Mr. Randy	Britton	General Manager	Westside Optical, Inc.	35 CR347	PO Box 157	Bono AR	72416-0157 972-0759	972-6023	
Mr. Rich	Haral	President	Windchimes by Russco III	6140 Southwest Drive		Jonesboro AR	72403-0353 932-5509	933-8741	rich@myrusscogarden.com

APPENDIX D

LICENSED HAULERS LIST

CRAIGHEAD COUNTY SOLID WASTE DISPOSAL AUTHORITY

WASTE HAULER LICENSED FOR 2011

NAME OF BUSINESS	MAILING ADDRESS OF COMPANY	CITY, STATE, & ZIP OF COMPANY	PHONE NUMBER	YEAR/MAKE MODEL	VIN. NUMBER	LICENSE NUMBER	DECAL NUMBER
1st Choice Rentals (D&G Rentals)	P O BOX 7	JONESBORO, AR 72403	870-933-9749	1977 Ford	N70EV1336994	C73782	95
1st Choice Rentals (D&G Rentals)				1994 Ford F350	1FDKF37H5RNB66501	4260KR	121
1st Quality Roofing	2807 MARTINBROOK DR	JONESBORO, AR 72401		1992 GMC	J8DE5B1UON3002128		307
A-1 ARK Roofing Systems	66 CR 366	BONO, AR 72416	870-316-2381	1979 Chevy	C17DD9V167473		
A-1 Kleenup & Restoration	416 BLANTON	TRUMANN, AR 72472	870-932-6515	1999 Z71	2GTEK19T2X1538314	213 OXW	320
AAA Floor Covering Installation	163 CR 622	JONESBORO, AR 72404	870-275-8354	2005 Ford F350	1FTTW31P95EA36723	014 NW/N	285
Abilities Unlimited of Jonesboro	P O BOX 1207	JONESBORO, AR 72401	870-897-0753	1983 International / Dump	1HTAA17EX0HB11984		151
Abilities Unlimited of Jonesboro			870-932-1551	2002 Dodge Ram	ID7HA16N02J218337	310ILG	22
Adams & Cooper Plumbing Co., Inc.	P O BOX 1141	JONESBORO, AR 72403	870-935-5666	2001 International / Bob Truck	1HTSCAAMX1H362592	C56092	25
All-Brite Solutions	3057 DISTRIBUTION	JONESBORO, AR 72401	870-972-6700	2003 Ford 25V	1FTNS24L83HA14301	256MJK	288
Allred Construction	201 GR 728	PARAGOULD, AR 72450	870-930-4237	2005 Chevy/ SK3	1GBJK34235E293175	211 KJS	221
A.R. Construction	2104 SPRINGHOLLOW DR	JONESBORO, AR 72404	870-530-9003	2008 GMC 2500 Heavy Duty	1GTGK23J2YF433191	445OGR	71
Arkansas Equipment Co	4905 SOUTHWEST DR	JONESBORO, AR 72404	870-935-9260	1977 Chevy Dump	CCE617V11625	B249S87	148
Arkansas Pools and Spas	3413 SOUTHWEST DR	JONESBORO, AR 72404	870-935-1000	2000 Lexus RX300	JT6GF10U2Y0071998	729NIO	298
Arkansas Preservation & Recovery	178 CR 622	JONESBORO, AR 72404	870-919-5574	2003 Ford F250	1FCNW21P43CC18297	579OOC	240
Arkansas Striping Co.	336 OXFORD COVE	JONESBORO, AR 72404	870-935-9361	2010 Ford F150	1FTFX1CV0AFA61916	686OPP	100
Artistic Pools	2404 TWIN OAKS	JONESBORO, AR 72401	870-974-7665	2004 Ford F250	1FDNFT20L84EA76970	281 IDH	
Artistic Pools				2007 Chevy Silverado 1500	2GCEC13C71717055	967MDR	
Artistic Pools				2004 Ford F150	1FTRW14W5KB31266	927LYO	
Asplundh Tree Expert	HC33 BOX 50A	COMPTON, AR	870-365-6253	2006 GMC 7500	1GDL7C1G3G6F426074	C22768	248
Asplundh Tree Expert				2006 GMC 6500	1GDC1G06F412100	983026 IN	249
Asplundh Tree Expert				2011 Freightliner	1FVACXDVB8DAV8379	1230620IN	250
Asset Management Specialists	2021 HARTEL ST	LEVITTOWN, PA 19057	1-800-781-1558	2005 Chevy Express	1GCFG15X6S1251771		
Asset Management Specialists				2009 Chevy Silverado	1GCEC19029E134773		
ASU	P O BOX 250	STATE UNIVERSITY, AR 72467	870-972-2066	2007 Chevy	1GCEC14X1Z137464	227BUJ	1
B & R Hauling	2945 CR 762	JONESBORO, AR 72401	870-926-1130	2005 Dodge Ram 1500	ID7HA18N25J566948	009 GBE	
Barnett Roofing	110 ALEXANDER	BAY, AR 72411	870-761-7521	2001 GMC 2500	1GTLK231U41F122740	908MYM	287
Barton's of Jonesboro	3020 BROWN'S LANE	JONESBORO, AR 72401	870-932-6675	2005 GMC C7500	1GDU7C1C45F513438	C77421	
Bay, City of	P O BOX 99	BAY, AR 72411	870-781-3386	2002 International	1HTSCARR52H554241	X11502	
Becson Sanitation Service	1016 NEW HOPE LANE	JONESBORO, AR 72401	870-974-3951	2000 Mack Roll-off	1M2P267C1VM051261	E8047	139
Bednar, Paul	2900 KING	JONESBORO, AR 72401	870-932-4391	1994 Chevy C70	1GBJ7H1P3RJ110501	C73785	61
Belk Construction #3	P O BOX 127	BROOKLAND, AR 72417	870-972-1539	1997 Dodge Ram	3B7MC33D6VM537503	B199563	137
Belk Construction #2				2000 Dodge Ram	3B7K2C366YG113258	305 EBD	138
Belk Construction #1				2005 Dodge Ram/ 2500	3D7KS28CX5G728575	111 JWO	136
Belk Construction				1992 International	1HTSDPCNPH502326		302
Big M Construction	P O BOX 17126	JONESBORO, AR 72403	870-932-3673	1986 Ford 2-T	1FDPF70H8GVA03894	C18041	64
Big M Construction				1991 Chevrolet Dump Truck	1GBL7HLPOMU09954	C215485	65
Bob W Harrison Construction	2415 PINNACLE POINTE	JONESBORO, AR 72404	870-935-1957	2011 Chevy Silverado	1GCPKSE3XBF130469	809PNI	97
Bob Rees Sales, Inc	P O BOX 2516	JONESBORO, AR 72402	870-935-4800	1989 Mack R60	1M2N277Y9KW011272	F217289	94

Bono, City of	P O BOX 127	BONO, AR 72416	870-932-0100	1986 Chevy Dump	IGBG7D1B7GV115035	X15633	220
Bowman Bros., Inc.	1007 HWY 18	LAKE CITY, AR 72437	870-237-8245	1997 Ford F150	1FTDX160VNB22526	848MYM	154
Bradley Construction	P O BOX 17134	JONESBORO, AR 72403	870-243-5863	2009 GMC 1500	3GTEK3M096117781	2145PH	
Brand Custom Hauling, LLC. #01	692 CR 111	BONO, AR 72416	870-935-9344	1995 International 940	2HSFHAER1SC021877	H25063	232
Brand Custom Hauling, LLC. #02				1995 International 940	2HSFHAER6SC021874	H25062	233
Brand Custom Hauling, LLC. #48				1996 Freightliner	2FUYDDYB7TA719932	H25849	237
Brand Custom Hauling, LLC. #54				2002 International 941	2HSCNAER62C032384	K41436	235
Brand Custom Hauling, LLC. #77				1996 Freightliner	1FUYDCYB4TP666037	H25836	234
Brand Custom Hauling, LLC. #58				2002 International 941	2HSCNAER32C032388	H28601	236
Builders Material Co.	102 N GEE ST	JONESBORO, AR 72401	870-935-3511	1984 Chev / CCLP-TK	1GBG7D1BXXEV116645	C60060	
Burrow Halsey Realty Group Inc.	P O BOX 19129	JONESBORO, AR 72403	870-972-9191	2008 Ford F150	1FTRW12W08KB44564	BHRG06	286
C & C General Construction Contractors	227 CR 309	JONESBORO, AR 72401	870-926-3527	1992 Ford / F477	2FDLF47MXNCA77806	B239987	21
C & R Construction	2704 S CULBERHOUSE, STE A	JONESBORO, AR 72401	870-935-7800	1999 Chevy / 1ZT	1GCEK19V6XE253137	672 LZW	
C & R Construction				1996 Chevy S10	1GCCS1447T8127358	671 LZW	
C.L. Swanson	2622 COMMERCE DR	JONESBORO, AR 72401	870-935-8287	2004 Isuzu NPRHD	4KLC4BU041800800	B274870	58
Cameron Construction Co., Inc.	P O BOX 1492	JONESBORO, AR 72403	870-932-1306	1996 Mack RD6905	1M2P264Y9TM019103	H28174	230
Cameron Construction Co., Inc.				1996 Mack RD6905	1M2P264Y2TM019105	H28173	231
Carle Enterprises	20701 HWY 18 E	MONETTE, AR 72447	870-243-7707	2007 Chevy Silverado 2500	1GCHK29D47E151581	939NNW	
Carmichael Heat & Air	112 CR 765	BROOKLAND, AR 72417	870-761-8405	2000 Dodge Durley	1B7MC3362Y1131625		168
CastleGlenn Construction LLC	P O BOX 1267	JONESBORO, AR 72403		2005 Ford 250	1FTSX2191P15EB02591	NA86	
CastleGlenn Construction LLC				1999 Ford F350	1FTSF30L0XEE15139	153NAP	
Cavanaugh Auto Group	P O BOX 429	WALNUT RIDGE, AR 72476	870-886-4000	1997 Ford F150	1FTEF17W2VNG91826	0280ZE	90
Central Baptist Church	3707 HARRISBURG RD	JONESBORO, AR 72404	870-935-1950	1997 Chevy 1500	1GCEC14M4VZ147957	997L SW	14
CDI Headstart	P O BOX 17046	JONESBORO, AR 72403	870-931-1172	2010 Ford F150	1FTEW1CS1AFB84004	010PEY	5
Chandler Demolition	1223 N WATKINS	MEMPHIS, TN 38108	901-276-5459	1991 Mack	1M2P267Y5MM009844		
Chandler Demolition				2000 Freightliner	1FUYTWEEB2YHG89331		
Chandler Demolition #6				1990 Mack	1M2P141Y8LW008397		
Chandler Demolition				2000 Freightliner	1FUYTWEEBOYHG89330		
Chandler Demolition				2008 Mack Tractor	1MLAN09Y38N003472	H112239	
Christian Brothers Lawn Care #1	4413 HARRISBURG RD	JONESBORO, AR 72401	870-932-4655	1998 Chev C1500	1GCEC14W5WZ234530	400 HNC	157
Christian Brothers Lawn Care #3				1999 Chev K1500	1GCEK14T1XE150870	595 HDE	158
City Water & Light #3	P O BOX 1289	JONESBORO, AR 72403	870-930-3380	1986 Ford/Dump	1FDYG80K5GV A20736	X4917	36
City Water & Light #11				2008 Ford F250	1FTNE20538EA86110	577LZW	33
City Water & Light #21				2004 International 4200	1HTMPAFN84H671299	C61148	39
City Water & Light #34				2004 Dodge / 2500	3D7KU26D94G249603	800ISC	40
City Water & Light #43				1995 Mack/CH613	1MLAA13Y6SW052029	D53299	41
City Water & Light #47				2004 Ford F-250	1FTNE20L44ED03155	875 IPD	34
City Water & Light #71				2002 Ford/F450	1FDXPF46F12EC52972	906 GMI	35
City Water & Light #75				2002 International 4300	1HTNMA AN03H564410	C73778	42
City Water & Light #648				1994 Chevy 3500	1GBK3C4N5RJ103093	B271274	38
City Water & Light #675				2006 Chevy 1500	1GCEC14V36E230393	757KOB	37
Clark General Contractors, Inc.	P O BOX 838	WALNUT RIDGE, AR 72476	870-886-6711	1999 Ford / Dump	3FENF80C8XMA09332	C69392	109
Clark General Contractors, Inc.				1998 Ford / Dump	1FDYF80E6WVA03648	C71836	110
Colbert Lawn Service	300 ROSEMARY ST	BAY, AR 72411	870-219-3308	1995 Dodge / 3500	1B6MC36C955122685	C64699	
Consolidated Youth Services	4220 STADIUM BLVD	JONESBORO, AR 72404	870-972-1110	1997 GMC 1/2 Ton	1GTEC14W6VZ35046	507KWW	18

Construction Network, Inc. #1	P O BOX 1654	JONESBORO, AR 72401	870-972-5632	2002 Dodge / 1 Ton	3B7MC33C72M225418	828 EBC	260
Construction Network, Inc. #5632				1992 GMC / 2 Ton	1GAL7H1PKN5521789	LT 733-282	258
Construction Network, Inc.				1989 Toyota 898C	JTSVN94T69K001131	683MTD	259
Control Heating & Cooling, Inc.	3212 VAN AVENUE	JONESBORO, AR 72401	870-935-3693	1993 Ford F30	1FDKF37H3PNA38674	B199472	48
Craft Propane, Inc.	P O BOX 15105	JONESBORO, AR 72401	870-932-4325	1992 Chev / Kodiak	1GBM7H1PXXN103195	C58320	219
Craft Property Management	P O BOX 1383	JONESBORO, AR 72403	870-932-1457	2002 Dodge Ram 1500	3D7HU18NXG175423		9
Craighead County Maint. Dept	511 UNION ST, ROOM 119	JONESBORO, AR 72401	870-933-4500	1994 Chev / WT1500	1GDCD14Z/RZ235902	X13121	11
Craighead County Maint. Dept				2001 Dodge Ram	1B7HC16Y01D699732	399EJB	10
Critico Cable & Fiber	P O BOX 17035	JONESBORO, AR 72403	870-268-8812	1997 Freightliner	1FV3HLAA8YH809094	C73772	24
Crowley's Ridge Development Council	P O BOX 16720	JONESBORO, AR 72403	870-802-7100	2001 Ford	3FTZ17291MA 72087	379FML	
Crowley's Ridge Development Council	P O BOX 16720	JONESBORO, AR 72403	870-802-7100	2008 Chevrolet	1GCEC19X872115907	543MTD	
D. Barry Holden Construction	406 CEDAR ST	LAKE CITY, AR 72437	870-919-5063	2005 Ford F250 King Ranch	1FTSW21P45EA27839		161
Dacus Fence Co., Inc.	2729 N CHURCH ST	JONESBORO, AR 72401	870-932-4100	2006 Ford F550	1FOAX5Y76EB1752	B272469	162
Dacus Fence Co., Inc. #3				2000 Ford F250	1FTNX20L8YEA20857	706ODH	163
Dacus Fence Co., Inc. #4				2005 Chevy/4500	1GBC4C1E25F561964	B259974	284
Damien, Juan	200 W EASY	JONESBORO, AR 72401	870-919-2796	1979 Chevy F35	CC1249A164346	B279036	167
Damron Construction	1601 OVERHILL	JONESBORO, AR 72401	870-932-7710	1999 Chevy Z71	1GCEK14T0XE218723	1271LF	166
Damron Construction				1996 GMC 2700	1GD17HJ0TJ502085	B199379	32
Daniels General Contractors, Inc	2311 AUBURNDALE COVE	JONESBORO, AR 72404	870-934-1031	1999 Freight Dump Truck	1FV3GFAC6XH990432	C21538	239
Dave Redmon Roofing Service	786 CR 754	JONESBORO, AR 72401	870-932-7135	1994 Ford F450	1FDLE47F6REA22156	C67245	111
Dedman's Sanitation #1	609 DEDMAN DR	BAY, AR 72411	870-781-3754	2007 Sterling	2FZACGDC47AX45893	C67244	112
Dedman's Sanitation #2				2007 Sterling	2FZACGDC27AX45889	D50784	113
Dedman's Sanitation #3				2004 International	1HTWGADT64J092525	D50778	114
Dedman's Sanitation #4				1996 Ford	1FDZW82E3TVA08108	C64693	115
Dedman's Sanitation #5				2005 International	1HTWCAAN55J011159	C28523	116
Dedman's Sanitation #6				1999 International	1HTSDAANYXH572902	C71959	117
Dedman's Sanitation #7				2009 International	1HTWCAAN69J113124	D50779	118
Dedman's Sanitation #8				1999 International	1HTGHADT1XH226158	D50783	119
Dedman's Sanitation #9				2003 International	1HTWGADT53J067257	C71964	120
Dedman's Sanitation #10				2011 International	1HTWCAAN4BJ321184	P560185	262
Delta Environmental #102	1784 HWY 1 N	WYNN, AR 72396	870-238-3260	2007 Freightliner Rearloader	1FVHCYD127HY54953	P651353	263
Delta Environmental #104				2007 Freightliner	1FVHCYD127HY54854	P654658	264
Delta Environmental #105				2007 Freightliner	1FVHCYD127DY54913	P716383	265
Delta Environmental #106				2004 Peterbilt	1NPZLD0X34D715137	D315357	267
Delta Environmental #122				1997 Crane Carrier RL	1CYCCM486VT043046	B57658	268
Delta Environmental #123				1998 Crane Carrier	1CYCCM484WT04208	D58396	269
Delta Environmental #32				2005 Freightliner	2NPLZX0X9SM882522	P680790	266
Delta Environmental #401				2008 Mack	1M2AV04C88M4001472		313
Disposal Solutions LLC	594 CR 460	JONESBORO, AR 72404	870-203-0294	2007 Sterling Rolloff	2FZACGDC67AX84369	C56866	63
Ditta Door & Hardware Co.	P O BOX 2265	JONESBORO, AR 72402	870-972-0200	1992 GMC TopKick	1GDT7H1P7NJ516279	B279032	225
Ditta Door & Hardware Co.				2002 Ford F350	1FDWF36F92EA75142	B199802	238
Dixie Contractors, Inc.	101 N MILLER	JONESBORO, AR 72401	870-932-2793	1968 Chevrolet Bob Truck	CS438A135986		261
DNW Auto Supply	1711 E PARKER RD	JONESBORO, AR 72404	870-972-5827	1975 Chev/FB Dump	TCE675V604451		
Double D Construction	1105 DEALYN ST	LAKE CITY, AR 72437	870-351-2760	2008 Ford F150 Pick-up	1FTPW14V88FA159Q0	203NPY	

Downum's Waste Service, Inc. #1	P O BOX 9364	JONESBORO, AR 72403	870-972-6675	1997 Mack	IM2B212C3VM004104	K36177	78
Downum's Waste Service, Inc. #3				2006 Freightliner	1FVACXS06DW91926	C64441	81
Downum's Waste Service, Inc. #5				2004 Sterling	2FZHAZCV44AM25861	K43929	87
Downum's Waste Service, Inc. #6				2006 Freightliner	1FVACXS96DW91925	D55726	82
Downum's Waste Service, Inc. #7				2005 Mack Roll-off	IM2AGG1C95M021018	D58622	85
Downum's Waste Service, Inc. #9				2005 Mack Roll-off	IM2AG11C65M028055	D58620	86
Downum's Waste Services, Inc. #11				1995 Ford L8000	1FDXR62E6SV A07272	C35025	80
Downum's Waste Services, Inc. #12				1995 Ford Rearloader	1FDXR82E6SV A55422	D51779	77
Downum's Waste Service, Inc. #13				2005 Mack	IM2AG11C05M018993	H24516	79
Downum's Waste Service, Inc. #20				2004 Freightliner Roll-off	1FVHCYS44HM10365	D58621	84
Downum's Waste Service, Inc. #21				2004 Freightliner Roll-off	1FVACXD94HN05149	D58623	83
E.J. Buhrmester	1921 KENWOOD	JONESBORO, AR 72401	870-935-5312	1985 Chevy C20	1GBJC34MBFS186429		62
Elbert Rentals	4108 S MAIN	JONESBORO, AR 72401	870-932-3841	2004 Dodge	1D7FL36K24S579827	121LV1	276
Elam Enterprises, Inc.	P O BOX 2484	JONESBORO, AR 72402	870-935-4452	1995 Dodge	3B7KF23C8SM175234	3170PP	164
Equipment Sales & Service	PMB#109, 361 SOUTHWEST DR	JONESBORO, AR 72401	870-933-3724	2004 Ford F250	1FTNW21P73EC18410	931HGW	146
Fleming Construction	2312 INDIAN TRAILS	JONESBORO, AR 72401	870-935-4544	1978 Ford F350	1TTRKF372UCE3095	B200022	
Food Bank of NEA	3406 S CULBERHOUSE RD	JONESBORO, AR 72401	870-932-3663	2000 Freightliner	1FV6HFBFA9YHB92714	D59941	52
Forrest Office Machines	1005 GEE ST	JONESBORO, AR 72401	870-932-7852	1999 GMC W35	4KDB4B4ROX002756	B252706	91
Fowler Foods, Inc. #A571875	139 SOUTHWEST DR	JONESBORO, AR 72401	870-935-6032	2007 GMC Sierra	1GTJK33D77F109710	790LGH	66
French, Stacy	111 CR 424	JONESBORO, AR 72404	870-243-9644	2005 Ford F-250	1FTSW21P55EA95602	246 IZT	272
Gann, William (Yard Works)	391 CR 303	JONESBORO, AR 72401	870-761-0727	1996 Mack RD6	IM2P264C0TM021472	H28600	
Gary Robert Construction	3705 BLUERIDGE CIRCLE	JONESBORO, AR 72401	870-897-5231	1984 Kenworth Dump Truck	1XKWDB9X2ES318566		299
Gateway Tire of Arkansas	P O BOX 2335	JONESBORO, AR 72402	870-932-4523	1995 Chev 3500 HD	1GBKC34N0SJ106344	B199562	55
Gateway Tire of Arkansas #30				2007 International 4300	1HTMMAAL37H404459	C67687	57
Gateway Tire of Arkansas #28				2004 International 4300	1HTMMAAL4H568720	C70599	56
Gateway Tire of Arkansas #2				2003 Ford F250	1FTNX20P13EC65592	101KGD	54
Gateway Tire of Arkansas #1				2000 Ford F250	1FTNX20F5YEA35228	696MND	53
Gillis, Inc.	1335 E PARKER	JONESBORO, AR 72404	870-931-4000	2005 Freightliner	1FUJA6CK2SLU05227	K44084	294
Gilmer Construction, (Bill)	2962 CR 766	JONESBORO, AR 72401	870-972-6529	1977 Ford 9000	W901VY48950	H26442	
Gilmer Construction, (Bill)				1988 Kenworth	1NKALB9X2JJ349937	J19683	
Gilmer Construction, (Bill)				1989 Freightliner	1FYVDCYBIKH3420666	K39369	
Gilmore's Custom Kitchens	2901 STADIUM SQUARE	JONESBORO, AR 72404	870-926-1519	2005 Chevy Silverado	1GCEC14T952109762	364OZX	46
Gookin Carpentry, Inc.	2402 W WASHINGTON	JONESBORO, AR 72401	870-932-7638	1997 Dodge 2500	3BTKF23D2VM570474	948OZX	281
Greenway Equipment	P O BOX 16996	JONESBORO, AR 72403	870-972-1457	2006 GMC 2500 HD	1GTHC24U77E142152	1550EP	311
H & W Construction	5505 TIMBER CREEK	JONESBORO, AR 72404	870-935-5564	2000 Chevy 1500 Ext. Cab	2GCEK19T8Y1125654	671MKK	
Hammett, Keith	10081 HWY 49B	BROOKLAND, AR 72417	870-935-5092	2000 Sterling L9500	2FZKPYBBYAB08433	J21967	304
Hammett, Ron	P O BOX 2322	JONESBORO, AR 72401	870-926-1468	2000 International 5600I	1HTXHAHT7YJ072432	H28014	303
Harmon Roofing	803 FAYE ST	LAKE CITY, AR 72437	870-930-6671	2004 Ford F250	1FTNW20534EA94515	963NGC	
Harris Pipe & Line Plumbing	292 CR 311	JONESBORO, AR 72401	870-237-4044	2000 Ford Sterling	2F2HRJA0YAB37449	C71539	17
Health South Rehab Hospital	1201 FLEMING	JONESBORO, AR 72401	870-932-7396	2000 Dodge 3500	2B6LB31Z4YK158958	B19905	310
Hedger Brothers, Inc.	100 S PATRICK	JONESBORO, AR 72401	870-932-0440	2004 Ford F450	1FDXF46P74EB70322	B262445	8
Hesch Construction	105 GRAYSON	JONESBORO, AR 72404	870-931-4881	2000 Ford F250	1FTPE24L9W1HB79438		241
Hicks Trucking	301 N BAY DR	BAY, AR 72411	870-931-7348	1991 International	2HSPHLUR9MC052875		
Hillpoint Development	2912 LONGVIEW DR	JONESBORO, AR 72401	870-781-3740	1995 Ford F450	1FDLF47G7SEA76810	B270871	16
			870-932-8453				

Honey Do Construction	217 OAK ST	TRUMANN, AR 72472	870-316-9049	1999 Mazda B3000	4F4Z2R1V9XTM21123	161HNM
Housley Services Inc.	P O BOX 10032	JONESBORO, AR 72401	870-530-0602	1974 Ford F600	F60DVU01002	B199884
Huffman Hauling	404 BOGIL	PARAGOULD, AR 72450	870-761-6227	1997 Freightliner FLD120	2FUYDNDD2WVA951888	305
Huffman Hauling				1998 Volvo Dump	4VGD7DAJF3WN765896	308
Huffman Hauling				1998 Volvo Dumo	4V67DAJF8WN765293	309
Huffman Custom Hauling	6531 CR 928	LAKE CITY, AR 72437	870-761-6227	1998 Volvo	4V67DAJF3WN765896	305
J. S. S. Inc.	1809 CAROLYN DR	JONESBORO, AR 72404	870-919-3234	1991 GMC Tandem Dump	4V1JDBRE2NR811725	
J.T. White Lumber #3	915 E PARKER	JONESBORO, AR 72404	870-932-7411	1996 International	IHTSCABMI1TH213649	C17985
J.T. White Lumber #6				2004 International 4200	IHTMPAFM04H671711	C74655
Jackson, Bros. Oil Co. Inc	P O BOX	MONETTE, AR 72447	870-351-0561	2000 Ford F350	1FTWW32FOYEA63108	F255269
James Crawford Construction	3127 SOUTHWEST DRIVE	JONESBORO, AR 72404	870-275-6540	2008 GMC Crew Cab	1GTHK23618F154461	714MXE
James Crawford Construction				1988 Isuzu Pickup	JAACR11EOJ7221889	541KBK
James Crawford Construction				2008 Ford Pickup	1FTPW14V78KEJ9821	256
James Sign Service				2004 Chevy Silverado	1GCHK9U04E221430	257
Jimmy Sanders, Inc.	P O BOX 375	JONESBORO, AR 72403	870-935-8211	2000 Dodge	1B7HF16Z1Y5543595	431 EBC
Jimmy Sanders, Inc.	P O BOX 16717	JONESBORO, AR 72403	870-972-6141	2000 Chevy C3500	1GBKC349YF515709	F241587
Jimmy Sanders, Inc.				2002 International 2 Ton	1THTMKAAN32H545239	F217298
Jimmy Sanders, Inc.				2008 GMC 3500	1GDE4C1998F403956	F26956
Jimmy Sanders, Inc.				2005 GMC C3500	1GDE4C1265F523891	F253599
Jimmy Sanders, Inc.				2007 Nissan Titan Pickup	1NGBA06A47N222489	836OWH
Jimmy Sanders, Inc.				2005 GMC TK4500	1GDE4C1265F523874	F253600
Jonesboro Housing Renewal and Authority	330 UNION	JONESBORO, AR 72401	870-935-9800	2008 GMC Sierra	1GTEC14CX8Z213214	S08 446
Jonesboro Overhead Door LLC	925 E PARKER RD	JONESBORO, AR 72404	870-932-6891	2002 Chevy	1GBJC34V72F161413	B237210
Jonesboro Public Schools	2506 SOUTHWEST SQ	JONESBORO, AR 72401	870-933-5800	1990 Ford/F150	1FTDF1SN51LA97225	793 GCZ
Jonesboro Public Schools				1997 Ford F350	1FDJF37H5VEA82961	1161JL
Jonesboro Public Schools				1978 International Bob Truck	DO51ZHHB19825	WSX 980
Jonesboro Public Schools				1980 International	AA160KHB20144	675NHD
Jonesboro Roofing, Inc. #20	P O BOX 9016	JONESBORO, AR 72403	870-935-4221	1991 International	1HTSCNDM4MN344743	C18379
Jonesboro Roofing, Inc. #21				1995 GMC Top Kick	1GDD74H1P4S1515327	C18381
Jonesboro Roofing, Inc. #22				2000 International	1HTSCAAAM0YH251835	C18380
Jonesboro Roofing, Inc. #25				1999 International	1HTSCAAAM3XX596288	C18378
Jonesboro Roofing, Inc. #43				1996 International	1HTSCAAM2TH353923	C64150
Jonesboro Roofing, Inc. #44				1995 International	1HTSCABP63H634548	C58993
Jonesboro Roofing, Inc. #65				1999 International	1HTSDAAMOXH661238	C66089
Jonesboro Sun	P O BOX 1249	JONESBORO, AR 72403	870-935-5525	1999 Chevy 3500	1GBHG31ROX1135016	733MND
Jonesboro Winnelson #1	1430 E WASHINGTON	JONESBORO, AR 72401	870-932-4543	2008 Isuzu/NQR	JALEXW16287960249	B264279
Jonesboro, City of #2201/Street	P O BOX 1845	JONESBORO, AR 72403	870-932-7520	2003 Ford E-350	1FBSS31L13HB09297	397 GCA
Jonesboro, City of #2239/Street				1995 Chev / C2500	1GCGC29K4SE206014	X1F900
Jonesboro, City of #2555				2003 Dodge	3D7KA26D0G806437	393 GCA
Jonesboro, City of #2560				2004 Ford	1FTNF20L44EA71902	049IGO
Jonesboro, City of #2571				2009 Chevy Silverado	1GCHK49K099E128116	
Jonesboro, City of #2579				2006 Dodge	3D7KR26DX6C231826	820 KEX
Jonesboro, City of #2580				2007 Ford	1FTNF20568EB66758	685 MET
Jonesboro, City of #2581				2008 Ford 3/4 Ton	1FTNF20538EE05330	453NBO
						170

Jonesboro, City of # 3201/Street	2005 Chev / C-4C042	IGBE4C1E45F505795	201
Jonesboro, City of # 3202/Street	2005 Chev / C-4C042	IBGE4C1EX3F505705	202
Jonesboro, City of #3203/Street	2008 Chevy/ M2106	IFVACWB578HZ69440	203
Jonesboro, City of # 4308	2007 Sterling	2FAASD97AX83840	172
Jonesboro, City of # 4309	2007 Sterling	2FZAASDC37AY56430	173
Jonesboro, City of # 4311	1999 Peterson TL3	1GDM7H1C5X1508405	174
Jonesboro, City of # 4312	2000 Sterling	2FZXBJCB8YAA25293	175
Jonesboro, City of # 4315	2003 Sterling	2FZHAZASS54AM33847	176
Jonesboro, City of # 4316	2007 Mack Galbreath Model	1M2AT04C07M004015	177
Jonesboro, City of # 4337	2007 Sterling	2FZHA1DC57AY56398	178
Jonesboro, City of #4339	1996 Intnl 4900	1HTSHAAR6TH391510	179
Jonesboro, City of #4344	2000 Volvo	4V2E32HEXYN234649	180
Jonesboro, City of #4346	2006 Conдор	5SKHANDA9FRX72110	181
Jonesboro, City of #4347	2006 Conдор	5SHHANDA2FRX72112	182
Jonesboro, City of #4348	2006 Conдор	5SKHANDA4FRX72113	183
Jonesboro, City of #4349	2006 Conдор	5SRHANDA87RY72115	184
Jonesboro, City of #4350	2000 Isuzu	JALESB14ZY7901280	186
Jonesboro, City of #4351	2001 GMC	J8DE5145Z7900065	X10607
Jonesboro, City of #4352	2009 Nissan UD 2300	JNALC8IH29AH75002	186
Jonesboro, City of #4354	2003 Volvo	5VCE36HE3N194274	187
Jonesboro, City of #4355	2004 Sterling	2FZHAZAS4AM31834	188
Jonesboro, City of #4357	1995 GMC	1GDK7H1J2SJ500468	0371G0
Jonesboro, City of #4358	2005 Autocar	5VCE36PE15H200768	X11510
Jonesboro, City of #4359	2005 International	1HTZZAAR66J233709	X15632
Jonesboro, City of #4360	2003 Mack	1M2K195C23M022667	X15319
Jonesboro, City of #4361	2005 GMC	1GDM7C1CSF530686	X15317
Jonesboro, City of #4362	2005 Mitsubishi	JL6CDD1S8SK010404	X13701
Jonesboro, City of #4363	2006 Conдор	5SXHANDA07RX72111	X13713
Jonesboro, City of #4364	2006 Conдор	5SXHANDA67RX72114	X13716
Jonesboro, City of #4365	2007 Sterling	2FZAASDC97AY56304	X14958
Jonesboro, City of #4366	2007 Nissan UD	JNALC80H57AH60119	X14961
Jonesboro, City of #4367	2007 Sterling	2FZAASDC57AY56431	X14959
Jonesboro, City of #4368	2007 Mack	1M2K189C67M039188	X14965
Jonesboro, City of #4369	2008 Mack	1M2AX04C08N002898	X15320
Jonesboro, City of # 5209/Street	1988 Kenworth / Big Lowboy	1XKDD29XGJ510483	X4651
Jonesboro, City of # 5213/Street	1984 Mack / Small Lowboy	1M2N16245EA088534	
Jonesboro, City of # 5215/Street	1995 International / 4900	1HTSHAAR3SH63533	X9552
Jonesboro, City of # 5216/Street	1995 International / 4900	1HTSHAAR5SH63533	X9551
Jonesboro, City of # 5217/Street	1997 International / 4900	1HTSHAARTVH425442	X8009
Jonesboro, City of #5218/Street	1994 Mack / CH 613	1M1AA12Y9TE041490	
Jonesboro, City of #5219/Street	1994 Mack / CH 613	1M1AA12Y2RW041492	
Jonesboro, City of #5220/Street	1994 Mack / CH 613	1M1AA12Y6RW041494	
Jonesboro, City of #5221/Street	1994 Mack /CH 613	1M2AT04C77M002889	X14956
Jonesboro, City of #5222/Street	2007 Mack/ CTP 713	1M2AT04C37M002887	X13719

Jonesboro, City of #5223/Street	2007 Mack/CTP 713	IM2AT04C87M002898	X13720	214
Jonesboro, City of #5228/Street	2007 Mack/CV 713	IM2AG11C37M059234	X11522	215
Jonesboro, City of #5229/Street	2007 Mack/CV 713	IM2AG11C57M059235	X11523	216
Jonesboro, City of #5230/Street	2007 Mack/CV 713	IM2AG11C77M059236	X11521	217
Jonesboro, City of # 5302/Street	1994 Ford / 2RII-25T	IFDYU82E7SVA34193		
Jonesboro, City of # 5303/Street	1995 Ford / LT8000	IFDYU82E1SVA50552		
Jonesboro, City of #2469/Parks&Rec Dept	Jonesboro, AR 72403	870-932-0740	X9250	
Ken's Quality Homes	JONESBORO, AR 72401	870-935-0919	140KGD	300
Kent Arnold Construction	JONESBORO, AR 72401	870-932-2600	264035	291
King Disposal #400	PALESTINE, AR 72372	870-581-2883	H509630	149
KMC General Contractors, LLC	JONESBORO, AR 72402	870-935-4053	3FENF80Z3XMA21926	292
Lamar Outdoor Advertising	JONESBORO, AR 72404	870-935-4603	IGCEK14V43252359	150
Larry Owens Construction	JONESBORO, AR 72401	870-919-1757	IGCEK19J18Z270400	218
Lawn Tech/Lowell Thompson	JONESBORO, AR 72403	870-530-2172	ID3HB18T19S705237	2
Little Homes	JONESBORO, AR 72401	870-219-5827	JTGHT00N84196	244
Lopez Professional Roofer	JONESBORO, AR 72401	870-316-2837	1FTSW20P27EA30081	253
Loyd Construction #87	JONESBORO, AR 72401	870-932-5818	1987 International / Tri-Axle Dump	H19245
Mallard Clean Up Services	Caraway, AR 72419	870-351-8316	1FTXR15X1YP A88178	318
Mallard Clean Up Services	Caraway, AR 72419	870-351-8316	IFTYR10C2WUCU21061	319
Mantech	JONESBORO, AR 72401	870-934-1663	IGCIKXC89B109503	277
Mantech			3FTNW21F81MA61257	278
Marck Recycling and Waste Services#501	JONESBORO, AR 72401	870-935-1491	1MZB209C9NM009663	DS9949
Marck Recycling and Waste Services#503			IHTSHNZR9PH539466	DS9956
Marck Recycling and Waste Services#504			1M2P264C3WM025102	DS9007
Marck Recycling and Waste Services#505			1M2P267C3XMC43886	DS9008
Marck Recycling and Waste Services#506			4V5JBGH8XN866544	DS9009
Marck Recycling and Waste Services#507			4VHJCCGF7XN865927	DS9010
Marck Recycling and Waste Services#508			1MZP267032M063676	DS9012
Marck Recycling and Waste Services #701			1XPZLADXC6PD707221	DS9951
Marck Recycling and Waste Services#703			1M2K195C13M022854	DS9013
Marck Recycling and Waste Services#704			1NPZLDOX3WD710894	DS9011
Marck Recycling and Waste Services#706			5VCDCC6KF88H206843	J22119
Marck Recycling and Waste Services #707			SVACACLIJF89H208760	51APOW
Marck Recycling and Waste Services #708			1M2AY01C7BM008006	315
Master Cleaning Systems	JONESBORO, AR 72401	870-931-7000	IHTSCAAM1VH442045	C76621
Meadows Construction	JONESBORO, AR 72403	870-935-5655	1FTRE142XYTHB19150	221NKE
Meadows Construction			2FWYJMCB2XAB04799	K38691
Meadows Construction			1M1AA14Y9PW028104	K35776
Meadows Construction			1FV8FO497VL736559	K30605
Mid-America Manufacturing	JONESBORO,AR 72402	870-972-8080	26CECI19T82110592	872NKE
Mid-South Electronics	JONESBORO,AR 72401	870-935-0230	1GCDCL1H44RZ147333	654KAP
Mid-South Health Systems	JONESBORO, AR 72401	870-972-4925	3B7KCZOYJM233208	101PNI
Mid South Plumbing & Electric Supply	JONESBORO, AR 72403	870-932-8329	1GBJ34U0308698	67
Mid South Plumbing & Electric Supply			1HTLUDNMXJH520482	96

Mid-South Preservation & Recovery	4523 BUTLER RD	JONESBORO, AR 72404	870-926-6557	2007 Toyota Tundra	5TFRV54127X013939	47LJ	274
Mid-South Preservation & Recovery				2005 Ford F250	1FTSW21P75EB26395	660RBP	275
Miller, Melvin	323 CR 388	JONESBORO, AR 72401	870-974-2017	2006 Chevy Express Van	1GCGG2SV761230146	829KXE	150
Monette, City of	P O BOX 382	MONETTE, AR 72447	870-486-2060	2002 Intl Chassis	1HTMMAAPX3H54257		152
Monette, City of				1987 GMC C311 1ton	IGDJ701B1HV516837		153
Mr. Fix-It	P O BOX 17352	JONESBORO, AR 72401	870-933-1050	2003 Chevy 3/4 Ton	1GBHC31413199466	373LRI	
Nabholz	P O BOX 2090	CONWAY, AR 72033	870-934-4814	2007 Chevy SC3	1GBJC33D57F139161	B259975	
Nabholz				2002 Chevy 2CH	1GCHC29U02E123038	022JLG	
Nabholz				2006 Chevy SC3	1GBJC33D36F246109	B257889	
NEA Roofing	P O BOX 945	JONESBORO, AR 72403	870-935-9776	1975 Chev / 1 Ton	CZ333S161445	216GBE	70
Netleton Public Schools	3300 ONE PLACE	JONESBORO, AR 72404	870-910-7800	1984 Chevy	1GBG7D1B5EV118546	ZPK446	89
Nix Construction Company	1817 WOODSPRINGS RD, STE A	JONESBORO, AR 72401	870-931-4040	1987 Chev / C70	1GDL7D1B2HV521344	C63155	75
Nix Construction Company				1989 International / F93	2HSFEGUR6K002290	H28009	76
Northeast Arkansas Glass, Inc. #1	P O BOX 2265	JONESBORO, AR 72402	870-935-1260	2001 Ford Duley	1FTWX33F91EA66543	851LMT	155
Olympus Construction Inc	P O BOX 1674	JONESBORO, AR 72403	870-932-6670	1988 GMC Dump Truck	1GDM7D1Y0JV527805		
Olympus Construction Inc				2000 International Flat 4700	1HTSXCABM3YH238351		
P & L Equipment and Tires	1410 KELLER'S CHAPEL RD	JONESBORO, AR 72404	870-926-6924	2000 Chevy 2500	1GCGK24U1YE376593	331HJH	306
PF Construction	5112 HARRISBURG RD	JONESBORO, AR 72404	870-565-7073	2007 GMC Silverado	2GCEK13C871597215	368PGE	314
Petty Construction	2109 WINGATE DR	JONESBORO, AR 72404	870-919-5577	1997 Ford F150	1FTEX1726VNB78965		
Phillips Investments & Construction	P O BOX 19298	JONESBORO, AR 72403	870-932-1449	1999 International 470	1HTSCAAMXXH584350	C18312	12
Phillips Investments & Construction				1997 Mack	1M2AA18Y0VW078196	K40202	13
Procure Tire & Auto	7 GREENE 647 RD.	PARAGOULD, AR 72450	870-219-7918	1997 Chevy k1500	1GCEK19R2VE252236		312
Purzell Tire	3218 S CARAWAY RD	JONESBORO, AR 72404	870-872-8473	2001 FORD F250	1FTNX20F61EC53409	028PDD	282
R B Cole Construction	1505 WOOD ST	JONESBORO, AR 72401	870-935-1113	1983 Ford 1 Ton	2FDJF37G8DCA25570	B199747	135
Raben Tire Company	2100 N NEW YORK AVE	EVANSVILLE, IN 47711	812-465-5565	2005 Ford F350	1FDNF36985EA91510	B247353	
Raben Tire Company				1998 Ford F550	1FDAF856F9XEB34025	B199640	
Raider Tire Co., Inc.	3710 INDUSTRIAL DR	JONESBORO, AR 72404	870-932-4208	2000 Ford F250	1FTNX20F0YEC98324		20
Ramsons, Inc. #101	P O BOX 9185	JONESBORO, AR 72403	870-935-1210	1989 GMC Flabbed	1GDM7D1BSKY521740	C18194	45
Ramsons, Inc. #105				1987 Ford Flat Bed	1FDNF70H9HVA44642	C18347	43
Ramsons, Inc. #106				1987 Freightliner	1FUPYXYB5HP304944	H25146	44
RGB Mechanical Contractors, Inc. #51	P O BOX 1927	JONESBORO, AR 72401	870-972-8360	1994 Chev / 1 Ton	1GB/C34K3RE261569	C63838	26
RGB Mechanical Contractors, Inc. #65				2008 Ford 350	1FDWF37R98EA76163	B264274	29
RGB Mechanical Contractors, Inc. #66				1987 Ford / 2 Ton	1FDP774P8HVA35398	C17989	27
RGB Mechanical Contractors, Inc. #70				2004 GMC / 3500	1GDK34234E336192	B246671	28
RGL Construction	2809 RIDGEMONT	JONESBORO, AR 72401	870-926-5921	2008 GMC Sierra	3GTEK13308G250616	124 HNC	252
RGL Construction				1997 Ford Van Econoline	1FTEE1467VHA79123	767 MJK	283
RGL Construction				2010 Chevy Silverado	1GC4RYB67AF131100	1WNN	293
RGL Construction				2000 Chevy Express	1GCHG39R1Y11675386	030PPX	295
RGL Construction				1996 Ford Explorer	1FMDU35P6TUD49881		301
Riecland Foods, Inc. #45	P O BOX 927	STUTTGART, AR 72160	870-933-1167	1986 Chev C60	1GBG7D1B8GB107428	C16529	31
Ridout Lumber Co. of Jonesboro #16	2608 Stadium Blvd	JONESBORO, AR 72401	870-935-8900	2000 International	1HTSCAALXYH251672	C34665	7
Ridout Lumber Co. of Jonesboro #7				2000 International / DT466E	1HTSCAAL8YH269023	C72449	6
S & L Construction	609 ELIZABETH LANE	JONESBORO, AR 72401	870-930-5184	2006 GMC Sierra	1GCEK19T771E138299	445 LMT	
Sanford Hauling	609 HONEYSUCKLE	PARAGOULD, AR 72450	870-476-1954	1992 Peterbilt	1XPCDR9X1NN318000	H23183	

Sassy Pap's Lawn Care	3205 QUAIL RIDGE ROAD	JONESBORO, AR 72404	870-974-2844	2006 Ford F150 King Ranch	1FTPW14536KB82234	211GGH	69
Schmidt Construction, Inc.	P O BOX 17236	JONESBORO, AR 72401	870-919-1888	2007 Chevy Silverado	2GCEK13M971558722	65JD	227
Schmidt Construction, Inc.				2011 GMC Sierra	3GTPZB3B4G124053	TJN	228
Schmidt Construction, Inc.	P O BOX 27	JONESBORO, AR 72403	870-932-8470	2011 GMC Sierra	3GTPZV3E35BG101963	429FJ	229
Shannon Kee Construction				2003 International 7400	1HTWAOTXJ052167	H24S83	245
Shannon Kee Construction				2006 International 7600	1HTWYAHT061330525	H30712	246
Shannon Kee Construction				1999 Kenworth T800	1NKDLV0XXJ823373	H22738	247
Signature Buildings & Development	1997 CR 425	JONESBORO, AR 72404	870-926-2112	1995 Ford F150	1FTFE15H15NB02065	539PAD	226
Sign Systems, Inc.	P O BOX 6064	JONESBORO, AR 72401	870-931-1761	2004 Ford / F150	1FTPF12564NB08692	259 INX	289
Sims and Blancett Inc	P O BOX 25	LAKE CITY, AR 72437	870-930-4320	2008 GMC	1GTHK23638F175991		290
Sims and Blancett Inc				2004 Chevy	1GCHK23284F188856		
SKS Construction, LLC #1	P O BOX 19052	JONESBORO, AR 72403	870-935-5099	1998 Ford F 150	1HTZX17W3WKC21141	063 MNN	
Spirit Manufacturing Inc.	P O BOX 2037	JONESBORO, AR 72402	870-935-1107	1990 Ford 350 Van	1FDKE37G3LHB29933	B199144	
Spirit Manufacturing Inc.				1989 GMC 3500	1GDHR34K4KF704610	B199145	
Sark, Jim (United-Bilt)	1301 DAYBREAK	JONESBORO, AR 72401	870-931-8030	2000 Ford/ F250	1FTNX21F4YEE54010	563 GBB	222
Stonebridge Construction	P O BOX 1766	JONESBORO, AR 72403	870-268-9885	2007 Chevrolet3500	1GBJK34K57E548962	B277131	316
Sulzer Real Estate Rentals	2223 CONRAD	JONESBORO, AR 72401	870-932-9876	2000 Ford/F150	1FTRX17L6YNB61928	140GKR	15
Tate General Contractors, Inc.	P O BOX 1766	JONESBORO, AR 72403	870-935-4428	2000 International / 4700	1HTSCAAL1YH269025	C18391	3
Terenbaum Recycling Group (TRG)	130 FLINT	JONESBORO, AR 72401	870-932-8361	2006 Mack C177	1MZAL02C76M001565	H28634	98
Terenbaum Recycling Group (TRG)				2006 Sterling LT9	2FZHAZDE06AV90307	H28638	99
Thompson Trucking	1900 N 18TH ST	PARAGOULD, AR 72450	870-240-6177	1994 Freightliner	1FUYDCVB8RP652327		
Tim the Toolman	705 UTNAGE	JONESBORO, AR 72401	870-933-0733	2001 Ford F350	3FTSX31F91MA38818	BCLPTK	317
Tosh Lawn Care	87 CR 338	JONESBORO, AR 72401	870-935-4561	2003 Dodge 2500	3DJK628C13G722574	815XN	
Tosh Lawn Care				2001 Dodge 2500	3B7KF236X1G784073	5041PD	
Town & Country International, Inc.	P O BOX 2457	JONESBORO, AR 72402	870-932-8383	1989 Chev / Pack Rat	1GBJR34W8K121449	479 KKT	88
Tri-County Carpet Service	1200 MEDALLION CIRCLE	JONESBORO, AR 72404	870-932-7248	2006 Chevy Pickup	1GCCE19276Z145254	756NOA	165
Tri-County Garage Door Inc.	538 CR 360	JONESBORO, AR 72401	870-935-4810	2009 Chevy GMC	1GTEC290X9Z292020	350QPP	47
Tridant Builders	2704 PHILLIPS DR	JONESBORO, AR 72401	870-934-9724	2005 Ford F150	1FTRF12285NA10103	700QMH	271
Triple T Equipment, LLC	P O BOX 1766	JONESBORO, AR 72403	870-935-4428	1997 International / 4700	1HTSCAAM6VH441120	C57194	4
Valley View Schools	3121 VALLEY VIEW DRIVE	JONESBORO, AR 72404	870-935-6200	2006 Ford Super Duty	1FTSWZ1R08EB33825	555KAG	92
Valley View Schools				2005 Chevy Utility	1GBHC24095E218844	672NHD	93
Vance Construction Solutions	P O BOX 1366	JONESBORO, AR 72401	870-934-8900	2008 Ford F250	1FTNF20578EE46642	B268927	243
Vance Construction Solutions				2006 Lincoln MLT	5LTPW18386F14379	36RB	242
Waldroup Home Improvement	327 4TH ST	JONESBORO, AR 72401	870-316-4837	2002 Ford F150	1FTRF18W02NA78207	818MLX	251
Wallace Lawn Service	5104 E NETTLETON AVE	JONESBORO, AR 72401	870-972-1092	1990 Ford	1FDJF37G8LNA22418	B238104	159
Wallace Lawn Service				2000 Ford	1FDWX36FYEE23607	B199878	160
Ward's Asbestos Removal	9020 MORGAN RD	MABELVALE, AR 72103	501-888-0793	2004 Ford F350	1FTWV33PX4E39941	C69411	
White Quality Construction	3709 OAK CREST DR	JONESBORO, AR 72401	870-935-8572	1996 Chevy/3500	1GCHC33JT7F006718	D257881	223
Whitehead's Lawn Care	4890 HWY 141 N	JONESBORO, AR 72401	870-219-7882	2005 GMC Sierra	2GTEK13T551302794	AEMR	224
Whitehead's Lawn Care				1998 Chev /Z71	1GCEK14R4WZ225220	AEMI	279
Winford Roofing	253 CR 834	BLACK OAK, AR 72414	870-273-6955	1984 Chevy C30	1GBHC34M8EV115324	BT276592	30
Wood Construction	P O BOX 432	MONETTE, AR 72447	870-930-7943	2006 Ford 250	1FTSW20P86ED23496	505LNP	23
York Construction	2778 HWY 69	LAKE CITY, AR 72437	870-243-4941	2006 Chevy Silverado	1GCHK23V56F261542	525OCO	

Sassy Pap's Lawn Care	3205 QUAIL RIDGE ROAD	JONESBORO, AR 72404	870-974-2844	2006 Ford F150 King Ranch	1FTPW14536KB82234	211GGH	69
Schmidt Construction, Inc.	P O BOX 17236	JONESBORO, AR 72401	870-919-1888	2007 Chevy Silverado	2GCEK13M971558722	65JD	227
Schmidt Construction, Inc.				2011 GMC Sierra	3GTPZBE34BG124053	TJN	228
Schmidt Construction, Inc.				2011 GMC Sierra	3GTPZVE35BG101963	429JFJ	229
Shannon Kee Construction	P O BOX 27	JONESBORO, AR 72403	870-932-8470	2003 International 7400	IHTWAOTXJ3052167	H24583	245
Shannon Kee Construction				2006 International 7600	IHTWY AHT061330525	H30712	246
Shannon Kee Construction				1999 Kenworth T800	INKDLV0XXJ823373	H22738	247
Signature Buildings & Development	1997 CR 425	JONESBORO, AR 72404	870-926-2112	1995 Ford F150	1FTEF15H15NB02065	539PAD	226
Sign Systems, Inc.	P O BOX 6064	JONESBORO, AR 72401	870-931-1761	2004 Ford / F150	1FTPF12564NB08692	259 INX	
Sims and Blacett Inc	P O BOX 25	LAKE CITY, AR 72437	870-930-4320	2008 GMC	1GCHK23284F188856		289
Sims and Blacett Inc				2004 Chevy	1GCHK23284F188856		290
SKS Construction, LLC #1	P O BOX 19052	JONESBORO, AR 72403	870-935-5499	1998 Ford F 150	IHTZX17W3WKC21141	063 MNN	
Spirit Manufacturing Inc.	P O BOX 2037	JONESBORO, AR 72402	870-935-1107	1990 Ford 350 Van	1FDKE37G3LHB29933	B199144	
Spirit Manufacturing Inc.				1989 GMC 3500	1GDHR34K4KF704610	B199145	
Stark, Jim (United-Bilt)	1301 DAYBREAK	JONESBORO, AR 72401	870-931-8030	2000 Ford/ F250	1FTNX21F4YEE54010	563 GBB	222
Stonebridge Construction	P O BOX 1766	JONESBORO, AR 72403	870-268-9885	2007 Chevrolet/3500	1GBIK34K57E548962	B277131	316
Sulzer Real Estate Rentals	2223 CONRAD	JONESBORO, AR 72401	870-932-9876	2000 Ford/F150	1FTRX17L6YNB61928	140GKR	15
Tate General Contractors, Inc	P O BOX 1766	JONESBORO, AR 72403	870-935-4428	2000 International / 4700	IHTSCAAL1YH269025	C18391	3
Tenenbaum Recycling Group (TRG)	130 FLINT	JONESBORO, AR 72401	870-932-8361	2006 Mack CT7	1M2AL02C76M001365	H28634	98
Tenenbaum Recycling Group (TRG)				2006 Sterling LT9	2FZHAZDE06AV90307	H28638	99
Thompson Trucking	1900 N 18TH ST	PARAGOULD, AR 72450	870-240-6177	1994 Freightliner	1FUYDCYB8P652327		
Tim the Toolman	705 UTNAGE	JONESBORO, AR 72401	870-933-0733	2001 Ford F350	3FTSX31F91MA38818	BCLPTK	317
Toth Lawn Care	87 CR 338	JONESBORO, AR 72401	870-935-4561	2003 Dodge 2500	3DJK628C13G722574	815JXN	
Toth Lawn Care				2001 Dodge 2500	3B7KF236X1G784073	5041PD	
Town & Country International, Inc.	P O BOX 2457	JONESBORO, AR 72402	870-932-8383	1989 Chev / Pack Rat	1GBJR34W8K121449	479 KKT	88
Tri-County Carpet Service	1200 MEDALLION CIRCLE	JONESBORO, AR 72404	870-932-7248	2006 Chevy Pickup	1GCEC19276Z145254	756NOA	165
Tri-County Garage Door Inc.	538 CR 360	JONESBORO, AR 72401	870-935-4810	2009 Chevy GMC	1GTEC290X9Z292020	3500PP	47
Tridant Builders	2704 PHILLIPS DR	JONESBORO, AR 72401	870-934-9724	2005 Ford F150	1FTRF12285NA10103	700ONMH	271
Triple T Equipment, LLC	P O BOX 1766	JONESBORO, AR 72403	870-935-4428	1997 International / 4700	IHTSCAAM6VH441120	C57194	4
Valley View Schools	3121 VALLEY VIEW DRIVE	JONESBORO, AR 72404	870-935-6200	2006 Ford Super Duty	1FTSWZ1R08EB33825	555KAG	92
Valley View Schools				2005 Chevy Utility	1GBHC24095E218844	672NHD	93
Vance Construction Solutions	P O BOX 1366	JONESBORO, AR 72401	870-934-8900	2008 Ford F250	1FTNF20578EE46642	B268927	243
Vance Construction Solutions				2006 Lincoln MLT	5LTPW18586FJ14379	36RB	242
Waldroup Home Improvement	327 4TH ST	JONESBORO, AR 72401	870-316-4837	2002 Ford F150	1FTRF18W02NA78207	818MLX	251
Wallace Lawn Service	5104 E NETTLETON AVE	JONESBORO, AR 72401	870-972-1092	1990 Ford	1FDJF37G8LNA22418	B238104	159
Wallace Lawn Service				2000 Ford	1FDWX36F7YEE23607	B199878	160
Ward's Asbestos Removal	9020 MORGAN RD	MABELVALE, AR 72103	501-888-0793	2004 Ford F350	1FTWVW33PXJES3941	C69411	
White Quality Construction	3709 OAK CREST DR	JONESBORO, AR 72401	870-935-8572	1996 Chevy/3500	1GCHC33J7T006718	D257881	
Whitehead's Lawn Care	4890 HWY 141 N	JONESBORO, AR 72401	870-219-7882	2005 GMC Sierra	2GTEK13T551302794	AEMR	223
Whitehead's Lawn Care				1998 Chev IZ71	1GCEK14R4WZ225220	AEMI	224
Winford Roofing	253 CR 834	BLACK OAK, AR 72414	870-273-6955	1984 Chevy C30	1GBHC34M8EV115324	BT276592	279
Wood Construction	P O BOX 432	MONETTIE, AR 72447	870-930-7943	2006 Ford 250	1FTSW20P86ED23496	505LNP	30
York Construction	2778 HWY 69	LAKE CITY, AR 72437	870-243-4941	2006 Chevy Silverado	1GCHK23V56F261542	525OCO	23

Those in bold are not permitted.

APPENDIX E

LANDFILL AND TRANSFER STATION SURVEY SUMMARY FORMS

District Summary of Landfill Survey Forms

List of Facilities	Remaining Airspace	
	Constructed	Permitted
Legacy Landfill - 238 CR 476, Jonesboro, AR 72404	256,400	1,940,508
Lake City Transfer Station 12662 Hwy 18 E, Lake City	(Transfer Station)	

The report period requested is for materials received January 1 to December 31, 2017

Type of Material	Annual In-District Volume in Tons	Out-of-District Volume in Tons	Out-of-State Volume in Tons
MSW (Res. & Comm.)	72,346.15		
Industrial	19,144.75		
C & D Waste	31,958.92		
Special Waste	882.76		
Liquid Waste	0.00		
Medical Waste	0.00		
Other	1,161.42		
Total Waste	125,494.00		

Recovered Materials	Annual In-District Volume in Tons	Out-of-District Volume in Tons	Out-of-State Volume in Tons
Recycled Aluminum	48.68		
Recycled Batteries	0.38		
Recycled Cardboard	29.88		
Recycled Electronics	62.63		
Recycled Clear Glass	145.64		
Recycled Iron/Steel	21.40		
Recycled Tin/Sheet Metal	173.88		
Recycled Newspaper	118.67		
Recycled White Goods	61.65		
Recycled #1 & #2 Plastics	215.69		
Total Recycled	878.50		
Totals Net into Landfill	123,737.00		

District Summary of Transfer Station Survey Forms

List of Facilities: Lake City Transfer Station

12662 Hwy 18 East

Lake City, AR 72437

The report period requested is for materials received January 1 to December 31, 2017

Type of Material	Annual In-District Volume in Tons	Out-of-District Volume in Tons	Disposal Facility
MSW (Res. & Comm.)	6408	0	Legacy Landfill
Industrial	155.5		Legacy Landfill
C & D Waste	1168.7		Legacy Landfill
Special Waste			
Liquid Waste			
Medical Waste			
Other			
Totals	7732.2		