



Faulkner County Solid Waste Management District

4550 Highway 64 W P.O. Box 10781

Conway, AR 72034

Phone: (501) 336-0758

Fax: (501) 336-4004

Chairperson: Faulkner Co. Judge Jim Baker

Executive Director: W. Jack Bell



AFIN: 00 00000
PMT#: RSWMD-FAU

January 24, 2018

JAN 29 2018

DOC ID#: 73074
TO: SS>FILE <KMB

Dear Susan,

Enclosed you will find the Regional Solid Waste Plan Update for the Faulkner County Solid Waste Management District.

Should you need anything else please let us know.

Thank you and have a great day!

**Jean Jasso
Office Manager**

ARKANSAS DEPARTMENT OF ENVIRONMENTAL QUALITY

REGIONAL SOLID WASTE PLAN

Regional Solid Waste Management District	<u>Reporting Period</u> April 1, 2015 – April 1, 2020
--	--

A. COLLECTION

1. Weekly curbside/roadside and/or drop-off collection services should be made available for all household solid waste for residential dwellings within the state by city, county or private collection.
 - a. Has the District achieved this state goal? **Yes**
 - b. If not, what is the District's target date to achieve this state goal?
 - c. What actions will you implement to achieve your target date?
2. A minimum of semi-monthly yard waste collection services should be provided for all residential dwelling within the state. Collected yard wastes must be managed at a Class CY compost facility or an alternative approved pursuant to Ark. Code Ann. §8-6-220 (b). Each district should include the schedule of implementation within its solid waste plan, beginning with the larger cities.
 - a. Has the District achieved this state goal? **No**
 - c. What actions will you implement to achieve your target date? **A goal of starting yard waste collection has been set for the year 2020, provided additional funding becomes available to purchase equipment and hire additional personnel**
 - d. If completed, attach your schedule of implementation.
3. Collection services or a suitable alternative (transfer stations or community based drop-off locations) for bulky items should be made available for all residential dwellings within the state. Implementation of the program should be included in each district's plan and be based upon population.
 - a. Has the District achieved this state goal? **The City of Conway Department of Sanitation owns and operates a class 1 sanitary landfill. Drop off of bulky items is permitted for a fee at the landfill's convenience center.**
 - b. If not, what is the District's target date to achieve state goal?
 - c. What actions will you implement to achieve your target date?

B. DISPOSAL

1. Evaluate the disposal capacity of permitted landfills. Establish a seven-year minimum of disposal capacity for each district. If a district has no existing Class 1 landfill or has a facility with less than seven years' capacity, it can partner with an adjoining district or neighboring state to offer low cost disposal for their residents.
 - a. How much disposal capacity is available in your District? **The City of Conway Sanitary Landfill has an estimated life of 48.3 yrs. per the 2015 Annual Engineering Inspection Report and the Alternative Waste Management Landfill, Mayflower, Ar. has an estimated 25 yrs.**
 - b. If disposal capacity is under 7 years, what is the District's target date to achieve this state goal?
2. Evaluate the waste stream in the geographical area of each district through an annual waste audit. Develop a business plan for the diversion and recycling of waste based on the audit results.
 - a. Has the District achieved this state goal? **Yes**
 - b. What is the District's target date to achieve this state goal?
 - c. What actions will you implement to achieve your target date?
 - d. If completed, attach a copy of the business plan.
3. Require districts to establish a household hazardous waste program (either permanent sites or collection events) within their boundaries. This action item is currently mandated by Ark. Code Ann. §8-6-714 (a)(1)(B)(ii) for districts that charge up to \$2 per ton under the authority of that same provision and is a goal for districts that do not access this fee.
 - a. Does your District access the \$2 fee under Ark. Code Ann. §8-6-714? **No**
 - b. Has the District achieved this state goal or mandate? **No**
 - c. What is the District's target date to achieve this state goal or mandate? **The district will meet with the Director of the Conway Sanitation Department to discuss holding an annual HHW drive. The goal is to hold a drive for HHW by 2020**

C. RECYCLING

1. All municipal waste recycling programs should evaluate the economic viability of accepting the following items: paper products including new print, cardboard, white office paper, mixed paper, magazines, junk mail catalogs, phone books, boxboard and chipboard; metals, both steel and aluminum cans; plastic - #1PET, #2 HDPE and others where possible; clear and colored glass (no window glass, glass ceramics, light bulbs or ovenware); and white goods (large residential appliances).
 - a. How many items does each of your recycling programs accept? Attach an addendum listing District recycling drop-off locations with the types of items accepted at each.
We accept all of the items listed. See attachment
 - b. What recyclable materials has the District evaluated for accepting in this reporting period?
No new materials have been evaluated for acceptance
 - c. What recyclable materials has the District started accepting this reporting period that it didn't accept before this reporting period? **No new materials have been added**
2. All incorporated cities with a population of 5,000 or more will offer residential curbside recycling. Communities of this size must work with the districts to make available convenient opportunities for commercial and multi-family recycling. A minimum of semimonthly collection services or a suitable alternative system (e.g. transfer stations) for recyclable material collection should be made available for all residential dwellings within the state. Cities should be required to implement a curbside recycling program, beginning with the most populated cities and eventually including cities of all sizes. The implementation schedule should become part of each districts plan.
 - a. Has the District achieved any part of this state goal? **Yes**
Greenbrier, Vilonia, Mayflower, Guy, Conway, Wooster
 - c. What is the District's target date to achieve the state goal listed above (residential curbside recycling, commercial and multi-family recycling, and semimonthly collection services for recyclable material collection)?
 - d. What action will you implement to achieve your target date?
 - e. Attach an implementation schedule.
3. Districts will encourage the development and implementation of public venue/special event recycling programs. Districts will offer guidance for best management practices, education assistance and information, along with collection and marketing strategies for public venue facilities and special events. Districts will discourage use of non-recyclable items like Styrofoam cups.
 - a. Has the District achieved any part of this state goal? **Yes**
 - b. What is the District's target date to achieve this state goal?
 - c. What actions will you implement to achieve your target date?

D. SPECIAL RECOVERABLE MATERIALS

1. Encourage districts to exercise due diligence in the selection, use and operation of recycling and disposal facilities.
 - a. Has the District achieved any part of this state goal? **Yes. City of Conway Sanitation Department operates a Material Recycling Facility where the FCSWMD disposes of curbside recycling.**
 - b. What is the District's target date to achieve this state goal?
 - c. What action will you implement to achieve your target date?
2. Develop an illegal dump program that provides additional resources to identify and remediate illegal dumps, while providing education and enforcement to prevent future dumping.
 - a. Does the District have an illegal dump program? **Yes**
 - b. Explain the education and enforcement instituted by the District to prevent future dumping. **Any infractions of which the FCSWMD is notified, an IDCO responds to the location and presents education to the property owner as well as enforcement via FCSO when needed.**
 - c. Explain the additional resources the District provides to identify and remediate illegal dumps. **The IDCO with the District, ADEQ inspectors, and the Faulkner County Sherriff's Office**
 - d. Does the District employ or partner with a county within the District that employs an illegal dumps control officer?

E. EDUCATION AND PUBLIC PARTICIPATION

1. Every regional solid waste management district should have an updated, accurate website (or webpages on a partner's website) that provides citizens easy-to-use access to information about recycling, composting, waste reduction and waste management services in their communities.

Information should include which materials are accepted, days and hours of operation, physical location, how materials are collected/accepted and contact information for further questions. The districts are to ensure that city and county recycling/diversion programs are financially sustainable and are using best management practices.

- a. Does the district have a website, and if so, what is the address?

www.fcsolidwaste.com

- b. Does the district have a webpage on a partner's website, and if so, what is the address?

NO

- c. If no to both questions above, what is the District's target date to achieve this mandate?

2. Districts should develop partnerships within communities to improve information dissemination. Solid waste districts and individual waste management entities (cities, counties, designated recycling collection centers, etc.) should use social media to increase awareness of waste management methods and opportunities.

- a. List the methods in which you disseminate information to the public. **Facebook, website, brochures/flyers, educational programs at schools.**

- b. List partnerships formed with the District. **City of Conway Sanitation Dept.**

- c. List examples of social media utilized. **Facebook, website, Eco-fest**

F. EXECUTIVE SUMMARY

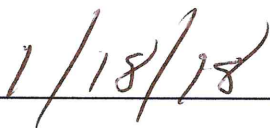
1. Provide a brief summary of other goals the District would like to implement over the next 5 years.

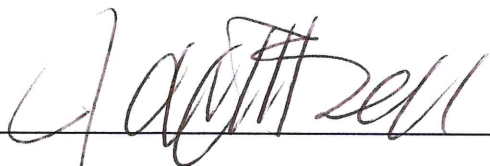
The District is currently evaluating the necessary equipment and personnel that would be required to begin a glass recycling service for all county residents.

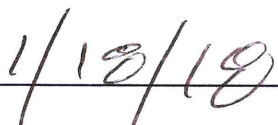
2. Provide a listing of programs initiated previously that are not listed in goals or mandates.

Reviewed and approved:



RSWMD Board Chairman

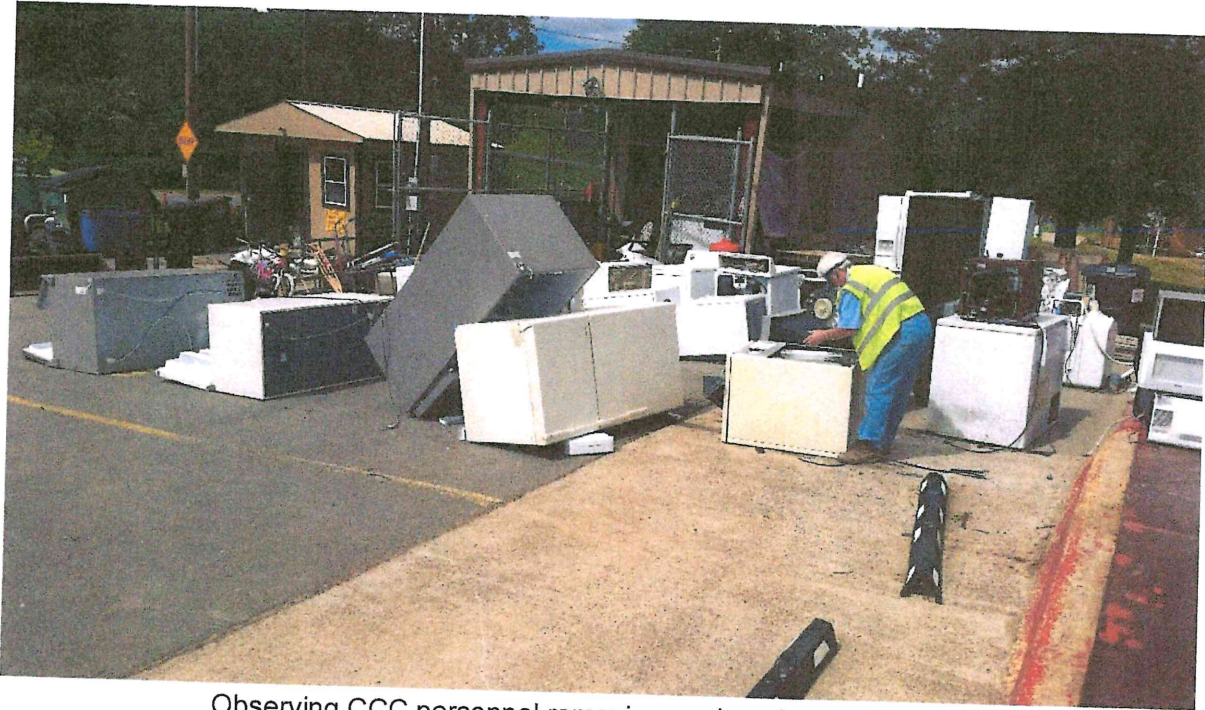
Date

RSWMD Director

Date

Appendix A

Photographic Log



Observing CCC personnel removing engines from appliances.



Metals Bin (Left), and Appliance Motors Bin (Right).



Aluminum Recycling Bin (Center).



Cardboard Material Recycling Bin.



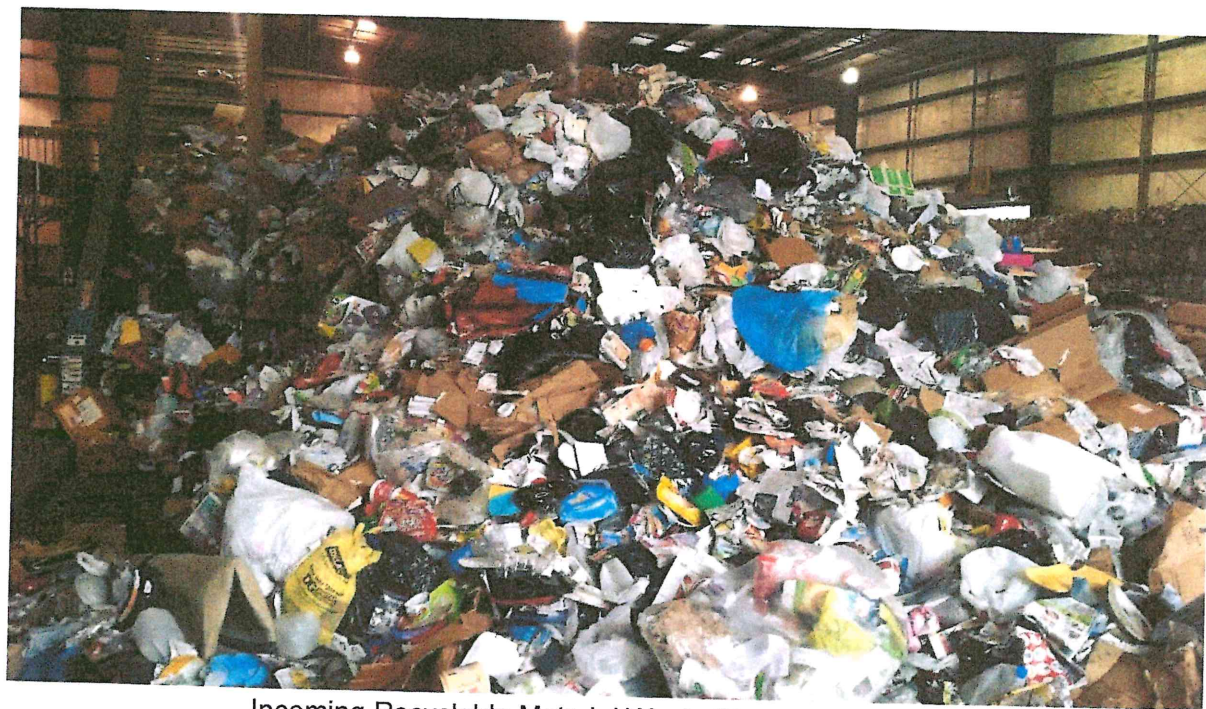
General Waste Bin.



Rubber Tire Drop-Off Area.



Yardwaste Drop-Off and Mulching Area.



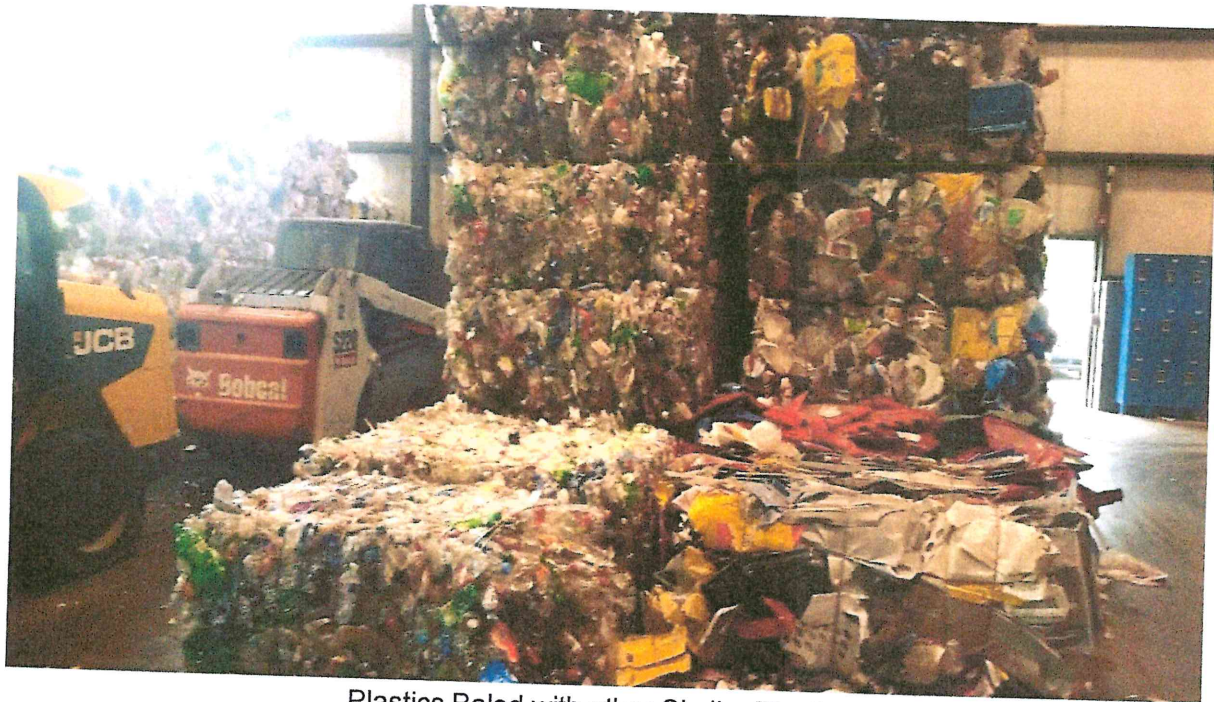
Incoming Recyclable Material Waste Stream at the MRF.



Baled Plastic Recyclables.



Close-up view of Baled Plastic Recyclables.



Plastics Baled with other Similar Plastics.



Baled Aluminum Cans (Left), and Baled Shredded Paper (Right).

Appendix B

Solid Waste Quantification and Composition Analysis Worksheet

SOLID WASTE QUANTIFICATION AND COMPOSITION ANALYSIS
 SORT DATA SHEET

City of Conway Landfill - CCC	May 1 st , & May 2 nd 2017	7:30 am – 3:30 pm
SORT DATA:		
Waste Components	Approximate Weights (lbs)	Comments
1. Paper		
Newspaper	10+10+10+5+30=65	
Magazines	10+5=15	
Cardboard	20+15+100+15+30+10+125+15+25+ 15+25+15+25+15+45+2+75+25+5+ 75+100=777	
Miscellaneous Paper	25+25=50	Packaging,
2. Plastics		
Pet (#1)	25+15+25=65	Water/soda/condiment bottles
HDPE & LHDPE (#2)	15+10+5+65+75=170	Containers, plastic bags, bottles
PVC (#3)	50+225+75+75+125+75+125+175=925	Toys, packaging, shower curtains, vinyl siding, bottles, linoleum flooring
LDPE (#4)	5	Garbage bags, grocery bags
Polypropylene (#5)	25+65=90	Food containers, car parts
Polystyrene (#6)	5+5=10	Styrofoam, packaging
Misc. Plastic / Polycarbonate	25+50+75+125+50+25+125+175+150 +150+25=975	TV Stands, Broken Tool Housings, Packaging
3. Organics		
Food Waste	2,500+750+100=3,350	Presumably food/kitchen waste
Textiles / Leather	5+125+225+150+175+275+175+ 75+175+125+125+165+175+250+ 750+125+250+500+125+115+125=4,210	Flooded carpet, carpet padding, Furniture Upholstery, Mattresses
Rubber	315+1,035+1,125+1,125+1,125+1,125 =5,850	Tires – 45 lbs a tire
Diapers	25+15=40	
4. Ferrous Metals		
Food Containers / Bimetal	25+15=40	
Aerosols		
White / Enameled	100,000	Washers, Dryers, Refrigerators
Auto Parts	10,000+275+500=10,775	

Other Ferrous	25,000+150+75+125+125+100+150+ 25=25,750	Lawn Mowers, Grills, Chainsaws
5. Non-Ferrous Metals		
Aluminum Cans	175+75=250	
Other Aluminum	125	
Other Non-Ferrous		
6. Glass		
Clear Containers	250+10+25+175+25=485	Beer bottles
Green Containers	250+10+25+175=460	
Brown Containers	250+175=425	
Plate Glass		
Other Glass	75+15+75=165	Likely Glass bottles (non- visible)
7. Wood		
Pallets	450+125=575	About 45lbs per pallet
Lumber	475+175+125+500+125+25+175+675 +750=3,025	
Stumps / Heavy Sections	250+650+1,250=2,150	
Other Wood	50+225+750+225+250+25+175+250 +200+200+150+125+250+125+125+ 75+125+75+25+100+125+125+125+ 115+125=4,040	Furniture framework, bookshelves, desks, wood paneling, etc...
8. Inert		
Asphalt		
Concrete / Brick / Rock	200+250=450	Garden Landscape Stones
Other Inert		
9. Yard Waste		
Leaves	1,500+250+750+1,000+1,000=4,500	
Grass	750+150+175+225+750+250+150=2,450	
Small Tree Limbs	20+1,500+1,000+750+750+250+175 +575+1,250+750+1,250+200+500+ 1,250+225+1,000+1,500+750+2,750+ 1,750+1,750=19,945	
10. Hazardous		
Lead Acid Batteries	45	Car battery
MISCELLANEOUS HOUSEHOLD WASTE	15+150+30+45+15+200+1,500+50+ 45+65+675+75+25+125+265+25+ 150+100+150+100+1,750+45+375+ 175+1,000+45+25+250+175+45+575 +25+125=8,145	Unclassified - Not-Visible (within Trash bags)

Materials Accepted at Conway Sanitation MRF

Plastics #1 - #7

Mixed Paper

Cardboard

Aluminum Cans

Steel Cans

Metal Jar Lids/Steel Bottle Caps

Styrofoam

Glass