

CAFO PERMIT REQUIREMENTS FLOW CHART

See Table Below This Chart for Size and Definitions

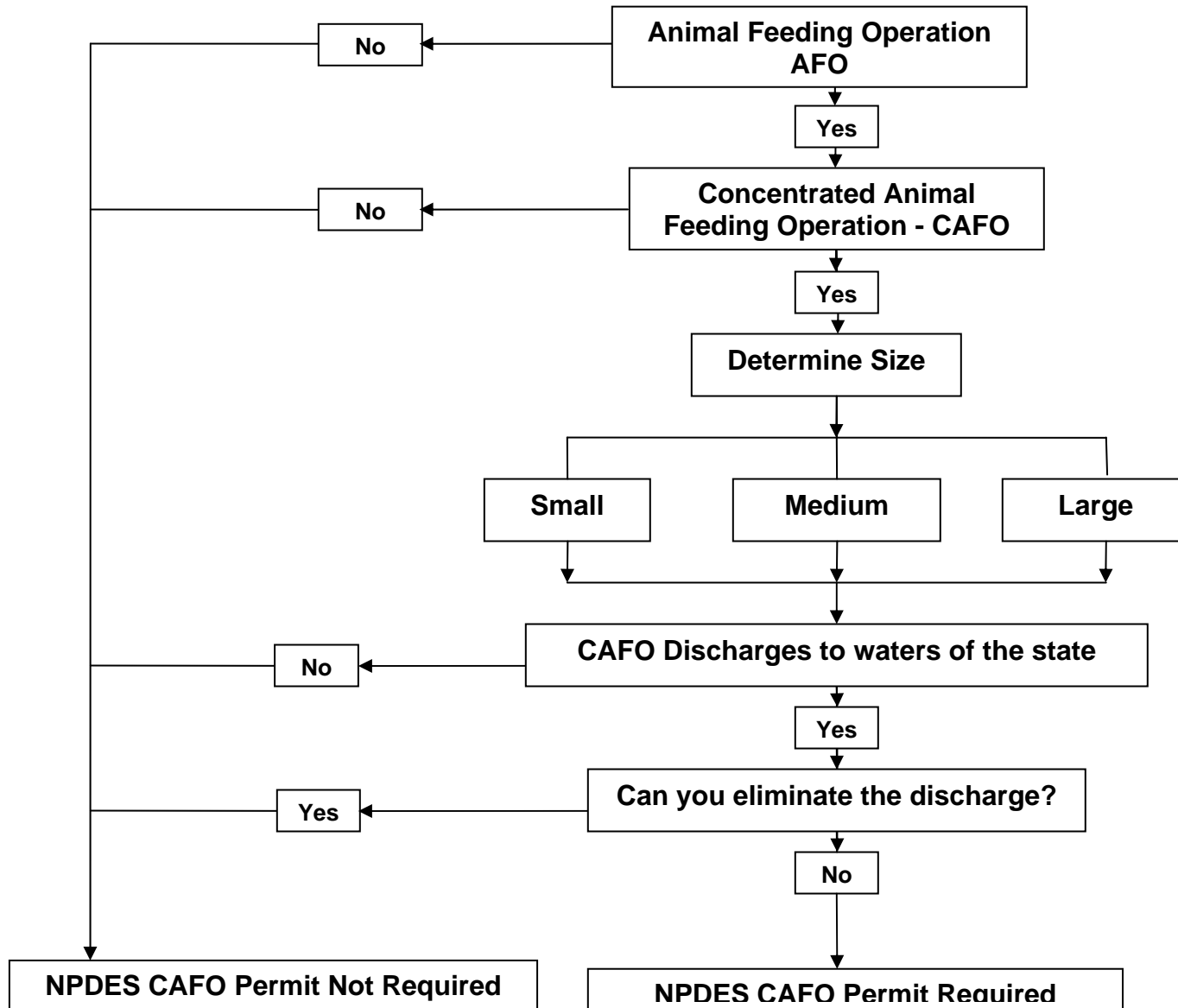


Table of Regulatory Definitions of Large CAFOs, Medium CAFO, and Small CAFOs

A **Large CAFO** confines at least the number of animals described in the table below.

A **Medium CAFO** falls within the size range in the table below and either:

- has a manmade ditch or pipe that carries manure or wastewater to surface water; **or**
- the animals come into contact with surface water that passes through the area where they're confined.

If an operation is found to be a significant contributor of pollutants, the permitting authority may designate a medium-sized facility as a CAFO.

A **Small CAFO** confines fewer than the number of animals listed in the table **and** has been designated as a CAFO by the permitting authority as a significant contributor of pollutants.

Animal Sector	Size Thresholds (number of animals)		
	Large CAFOs	Medium CAFOs	Small CAFOs
Subpart A			
sheep or lambs	10,000 or more	3,000 - 9,999	less than 3,000
horses	500 or more	150 - 499	less than 150
Subpart B			
ducks (other than a liquid manure handling systems)	30,000 or more	10,000 - 29,999	less than 10,000
ducks (liquid manure handling systems)	5,000 or more	1,500 - 4,999	less than 1,500
Subpart C			
cattle or cow/calf pairs	1,000 or more	300 - 999	less than 300
mature dairy cattle	700 or more	200 - 699	less than 200
Subpart D			
veal calves	1,000 or more	300 - 999	less than 300
swine (weighing over 55 pounds)	2,500 or more	750 - 2,499	less than 750
swine (weighing less than 55 pounds)	10,000 or more	3,000 - 9,999	less than 3,000
turkeys	55,000 or more	16,500 - 54,999	less than 16,500
laying hens or broilers (liquid manure handling systems)	30,000 or more	9,000 - 29,999	less than 9,000
chickens other than laying hens (other than a liquid manure handling systems)	125,000 or more	37,500 - 124,999	less than 37,500
laying hens (other than a liquid manure handling systems)	82,000 or more	25,000 - 81,999	less than 25,000